

OPERATION AND SERVICE MANUAL
MODEL 6920B
METER CALIBRATOR
MANUFACTURING CODE A

OPERATING AND SERVICE MANUAL

HEWLETT
PACKARD  HARRISON
DIVISION



CERTIFICATION

The Hewlett-Packard Company certifies that this instrument was thoroughly tested and inspected and found to meet its published specifications when it was shipped from the factory. The Hewlett-Packard Company further certifies that its calibration measurements are traceable to the U.S. National Bureau of Standards to the extent allowed by the Bureau's calibration facility.

WARRANTY AND ASSISTANCE

All Hewlett-Packard products are warranted against defects in materials and workmanship. This warranty applies for one year from the date of delivery, or, in the case of certain major components listed in the operating manual, for the specified period. We will repair or replace products which prove to be defective during the warranty period. No other warranty is expressed or implied. We are not liable for consequential damages.

For any assistance contact your nearest Hewlett-Packard Sales and Service Office. Addresses are provided at the back of this manual.

NOTICE


These preliminary instructions are supplied to permit the earliest possible delivery of your instrument. The information is not as complete as that which will be included in the final version of the manual. The attached card is provided to make certain that the final Operating and Servicing Manual for this instrument reaches the proper person. Please mail this card immediately and we will supply you with a copy of the complete manual as soon as it becomes available.

HARRISON LABORATORIES

A DIVISION OF
HEWLETT-PACKARD



100 LOCUST AVENUE • BERKELEY HEIGHTS, NEW JERSEY 07922
464-1234 - Area Code 201 - TWX-201-464-2117

Fill out and mail now; no postage required 

INSTRUCTION MANUAL REQUEST

Send complete Operating and Servicing Manual for Model No. _____

Serial No. _____ to: _____
PLEASE TYPE (OR PRINT)

COMPANY _____

ADDRESS _____

ATTENTION _____ TITLE _____

Estimated Date Manual will be available: _____



Postage
Will be Paid
by
Addressee

No
Postage Stamp
Necessary
If Mailed in the
United States

BUSINESS REPLY MAIL
FIRST CLASS PERMIT NO. 20 — BERKELEY HEIGHTS, N. J.



HARRISON LABORATORIES

100 LOCUST AVENUE

BERKELEY HEIGHTS, N. J. 07922

Attn. Publications Dept.



OPERATION AND SERVICE MANUAL
MODEL 6920B
METER CALIBRATOR
MANUFACTURING CODE A

October, 1965



SPECIFICATIONS

Input: 105-125 VAC, single phase, 58-62 cps.

Output: AC or DC.

| | | | | |
|-----|---|-------|----|--------|
| .01 | - | 1V | to | 5A |
| .1V | - | 10V | to | 1A |
| 1V | - | 100V | to | 100 ma |
| 10V | - | 1000V | to | 10 ma |

| | | | | |
|-------------|---|--------------|----|------|
| 1 μ a | - | 100 μ a* | to | 500V |
| 10 μ a | - | 1 ma | to | 500V |
| 100 μ a | - | 10 ma | to | 500V |
| 1 ma | - | 100 ma | to | 50V |
| 10 ma | - | 1A | to | 5V |
| 100 ma | - | 5A | to | .5V |

*DC only.

Line Regulation: The accuracy specifications will be met with line voltages from 105 to 125 VAC.

Output Impedance: DC - 1 Volt Range: Less than 0.0005 ohms.

Other Ranges: Accuracy specification is met with any load within the listed output capability.

| | |
|--------------------|--|
| AC - 1 Volt Range: | Less than 0.001 ohms. |
| 100 μ a Range: | Greater than 500 megohms. |
| Other Ranges: | Accuracy specification is met with any load within the listed output capability. |

| | | | |
|-----------------|---|-------------------------|----------|
| On 10 VAC Range | - | minimum load resistance | 5 ohms |
| 100 VAC Range | - | minimum load resistance | 500 ohms |
| 1000 VAC Range | - | minimum load resistance | 50K ohms |

Power factor of load 0.9 to 1.0 in AC Ranges.

Operating Temperature: 0^o to 50^oC.

Accuracy specification met at 25 \pm 10^oC after 1 hour warm-up in static environment.

DC Accuracy: 0.2% of output \pm 1 digit.

AC Accuracy: 0.4% of output \pm 1 digit.

Overload Protection: May be shorted in voltage ranges and open-circuited in current ranges without damage.

Grounding: In voltage ranges, the negative terminal is grounded.

In current ranges, both terminals are off-ground--load must be floating.



SECTION I
GENERAL INFORMATION

1-1 DESCRIPTION

1-2 The Model 6920B is a feedback-regulated power source particularly suited for calibration of meters. Ten continuously variable output ranges are provided, ranging from 1 volt to 1000 volts and from 100 μ a to 5A full output. All ranges provide either DC or AC at the power-line frequency; however, the 100 μ a range is not calibrated in AC. Power output capability is from 2.5 watts in the 10A range to 10 watts in the 10, 100, and 1000 volt ranges. The AC output, while having the same waveform as the input power line, is controlled to have the correct average value. The 3 digit output dial is calibrated in terms of the RMS value of a sine wave.

1-3 The 6920B is particularly useful for production-line checking of meters for accuracy and for sticking movements. In addition, the wide range of outputs allows convenient checking of multimeters in the laboratory. Compact construction, through the use of all semiconductor circuitry, allows for easy portability.

1-4 Built-in current and voltage limiting circuits protect the 6920B from short circuit loads in voltage ranges and open-circuit loads in current ranges.

1-5 OPTIONAL EQUIPMENT

1-6 A 0.1 ohm shunt is available to extend the voltage capabilities downward to include 1 mv full output, when used in conjunction with the current ranges of the 6920B. When the shunt is used, the source impedance is 0.1 ohm.

1-7 INSTRUMENT IDENTIFICATION

1-8 This manual applies only to the Model 6920B. Change sheets will be supplied which include any differences between your instrument and this manual.

1-9 COOLING SYSTEM

1-10 This instrument is convection cooled and requires no maintenance except for occasional dusting. Adequate space should be provided around the unit to allow free circulation of cooling air.

1-11 POWER CABLE

1-12 A 5-foot three conductor power cable is supplied with the instrument terminated in a polarized three-prong male connector recommended by the National Electrical Manufacturers Association (NEMA). NEMA recommends that the instrument panel and cabinet be grounded. All Harrison Laboratories instruments are equipped with a power cable which, when plugged into an appropriate receptacle, grounds the instrument. The offset pin on the power cable three-prong connector is the ground pin.

1-14 To preserve the protection feature when operating the instrument from a two-prong outlet, use a three-prong to two-prong adaptor and connect the green pigtail on the adaptor to ground.

SECTION II INSTALLATION

2-1 INCOMING INSPECTION

2-2 The instrument should be unpacked and inspected both mechanically and electrically upon receipt. Observe packing method and retain packing materials until unit has been inspected. Mechanical inspection involves checking for signs of physical damage such as scratched panel surfaces, broken knobs, etc. If damage is present, file a claim with the carrier. The electrical inspection involves checking the instrument against its specifications. Section V includes a performance check which is an in-cabinet check to verify proper instrument operation. It is recommended as an incoming inspection test. Refer to the warranty page if there is any electrical malfunction.

2-3 INSTALLATION

2-4 The meter calibrator is a portable instrument requiring no permanent installation. It is only necessary to connect the power cable supplied with the instrument to the power input and the instrument is ready for operation.

2-5 This instrument is air cooled. Sufficient space to permit free flow of cooling air around the instrument should be considered when installing. It should not be used in an area where the temperature exceeds 50°C (122°F). For rated accuracy, the temperature should be between 15°C and 35°C (59°F to 95°F).

2-6 POWER REQUIREMENTS

2-7 The 6920A operates on 115 volts 60 cps. The average input current with the output fully loaded is 1 ampere.

2-8 REPACKAGING FOR SHIPMENT

2-9 The following list is a general guide for repackaging an instrument for shipment. If you have any questions, contact your authorized Harrison Laboratories sales office.

- a. Use the original container designed for the instrument. If a new container is required, a foam pack and container can be ordered from Harrison Laboratories. The stock number is given in the table of replaceable parts under "Miscellaneous".
- b. Wrap the instrument in heavy paper or plastic before placing it in the shipping carton.
- c. Use plenty of packing material around all sides of the instrument and protect the panel with cardboard strips.
- d. Use heavy cardboard carton or wooden box to house the instrument and use heavy tape or metal bands to seal the container.
- e. Mark the packing box with "Fragile--Delicate Instrument", etc.

NOTE: If the instrument is to be shipped to Harrison Laboratories for service or repair, attach a tag to the instrument identifying the owner and indicating the service or repair to be accomplished. In any correspondence, be sure to identify the instrument by model number and serial number.

SECTION III OPERATION

3-1 INTRODUCTION

3-2 The 6920B is ready to use as received from the factory. For maximum accuracy, allow one hour after turning on to allow the internal temperature to stabilize.

3-3 Figure 3-1 describes the operating controls and indicators.

3-4 OPERATING CONTROLS

3-5 Output Switch

3-6 This disconnects the output terminals when it is in the center "OFF" position. It should be "OFF" when changing loads, changing the range or function switch setting and when turning on the instrument. This insures that any voltage transients which may occur at these times do not damage the load or the operator.

3-7 When all other settings are made and the load connected, the output switch can be tipped to either the "ON TEST" or the "ON HOLD" position. In either case power is now being fed into the load. The switch will return to "OFF" from the "ON TEST" position as soon as figure pressure is removed. It will remain in the "ON HOLD" position until manually returned to "OFF".

3-8 Always return the output switch to "OFF" before removing the load. This is particularly important in the current ranges where dangerous voltages will exist if the load is removed with the output still "ON".

3-9 This switch is also used to reset the over-voltage protection circuit. See paragraph 3-28.

3-10 Output Terminals

3-11 The device to be calibrated is connected to the output terminals. In DC the Red (HI) terminal is positive (conventional current flow out of the red terminal).

3-12 In all voltage ranges the Black (LO) terminal is connected to the chassis and to earth ground through the three-wire power cord.

NOTE: In all current ranges the black terminal is connected to a point in the circuit which is as much as 1 volt off ground potential, depending on the output dial setting. Do not shunt the LO terminal to earth ground with the device being calibrated. Inaccurate results may be obtained or the load could be damaged. There should be no problem of this kind with non-electronic or battery-powered current meters. If line-operated instruments are to be calibrated, see paragraph 3-29.

3-13 Function Switch

CAUTION: Do not turn FUNCTION SELECTOR when OUTPUT SWITCH is on.

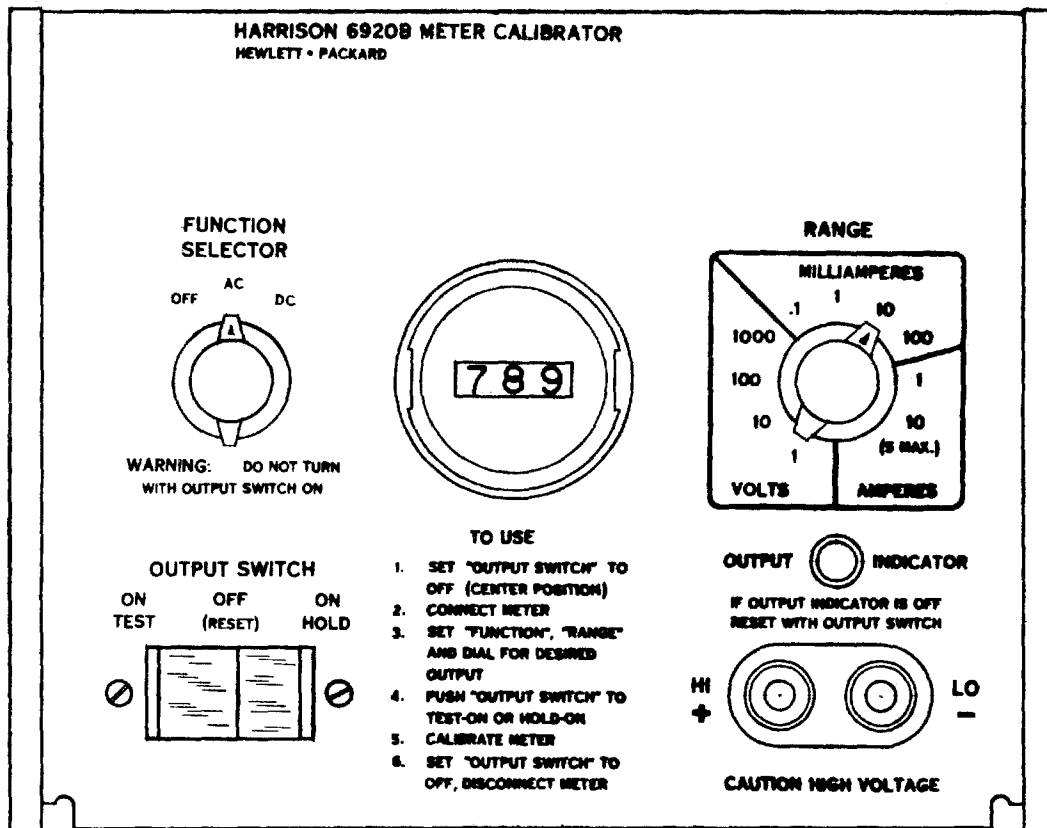


FIG. 3-1

1. Function Selector: Provides line power to meter calibrator when in "AC" or "DC" position. Selects AC or DC at the output terminals.
2. Power Indicator: Lights when instrument is turned on and AC source provided. Not lit if fuse is blown or missing.
3. Output Dial: Allows calibrated adjustment of output over the range selected.
4. Range Switch: Selects the voltage or current available with the output dial at its maximum setting - (1)000.
5. Output Indicator: Brightly lit when power is being delivered at output terminals. Dims if over voltage protection circuit trips. Out when output switch is "off".
6. Output Terminals: Connector for meter being calibrated. LO (-) terminal is connected to chassis ground in all voltage ranges. In current ranges the ground is inside the circuit and neither terminal should be grounded (see paragraph 3-29).
7. Output Switch: Open-circuits output terminals when in Off (reset) position. In this position the over-voltage protection circuit is also reset. In either "On" position power is delivered to the output. "On Test" will return "Off" as soon as finger pressure is removed. "On Lock" will remain on until manually returned to "Off".

3-14 The Function Switch is the input line switch for the meter calibrator. In the "OFF" position, input power is off. In "AC", alternating current will be delivered to the output terminals, while in "DC", direct current is available.

3-15 Range Switch

3-16 The range switch selects the current or voltage range appropriate to the meter being tested. The range indicated by the switch is the output available with the output dial fully clockwise, to (1)000.

3-17 Output Dial

3-18 The three-digit, ten turn output dial allows continuous adjustment of the calibrator output within any range.

3-19 To determine the correct decimal point placement, consider the decimal point to be immediately to the left of the left-hand digit, then multiply this number by the range switch setting. For example: 123 on the 10ma range is $.123 \times 10\text{ma} = 1.23\text{ma}$.

3-20 Output Indicator

3-21 The output indicator is lit when the meter calibrator is delivering power to the output terminals. The light is out if the output switch is in the "OFF" position. It also will be off dim when the over-voltage protection circuit is activated, which will occur if the load is removed in any of the current ranges.

3-22 If the output light is not on and output power is desired, move the output switch to the "OFF (RESET)" position. Check the load to be sure that it is within the voltage capabilities of the 6920B, then return the output switch to "ON".

3-23 GENERAL OPERATING PROCEDURE

3-24 A brief procedure for using the Model 6920B meter calibrator, printed on the front panel, is also shown in figure 3-1.

3-25 Overload

3-26 The load should be within the current capability of the voltage range with which it is being used. If excessive current is drawn the output voltage will begin to fall, approaching zero for large overloads. Table 3-1 lists the output capabilities of the 6920B in the various ranges.

TABLE 3-1

| Range | Maximum Output | Meter Resistance |
|----------------|---------------------|------------------|
| 1 volt DC | 5 amperes | --- |
| 10 volts DC | 1 ampere | --- |
| 100 volts DC | 100ma | --- |
| 1000 volts DC | 10ma | --- |
| 100 μ a DC | 500 volts | --- |
| 1ma DC | 500 volts | --- |
| 10ma DC | 500 volts | --- |
| 100ma DC | 50 volts | --- |
| 1 ampere DC | 5 volts | --- |
| 10 amperes DC | 5 amperes/0.5 volts | --- |
| 1 volt AC | 5 amperes | --- |
| 10 volts AC | 1 ampere | 5 ohms minimum |
| 100 volts AC | 100ma | 500 ohms minimum |
| 1000 volts AC | 10ma | 50K ohms minimum |
| 100 μ a AC | Not Calibrated | --- |
| 1ma AC | 500 volts | --- |
| 10ma AC | 500 volts | --- |
| 100ma AC | 50 volts | --- |
| 1 ampere AC | 5 volts | --- |
| 10 amperes AC | 5 amperes/0.5 volts | --- |

3-27 In current ranges, it should be recalled that an open circuit is the maximum load condition and that a short circuit is minimum load. When testing current meters, the OUTPUT switch should be returned to "OFF" before removing the meter under test. If this is not done, the output voltage will momentarily exceed the full voltage capability of the current range in use, to as much as 1500 volts in the lowest three current ranges.

3-28 If a current meter is inadvertently removed with the output "ON", an over-voltage protection circuit will turn the error amplifier off - preventing further high-voltage operation. When this occurs, the OUTPUT INDICATOR light ceases to glow brightly and becomes very dim, indicating to the operator that the protection circuit has tripped. The protection circuit can also be activated when changing ranges or turning on the meter calibrator with the output switch "ON". The over-voltage protection is reset when the OUTPUT switch is placed in the "OFF (RESET)" position.

NOTE: When the over-voltage protection is energized, the output may be as high as 20% of the range switch setting in DC operation or 30% of range setting in AC, regardless of the setting of the output dial. To avoid the possibility of overloading a meter, always return the output switch "OFF" before changing ranges.

3-29 Grounding

GROUNDING CONSIDERATIONS

I. VOLTAGE RANGES

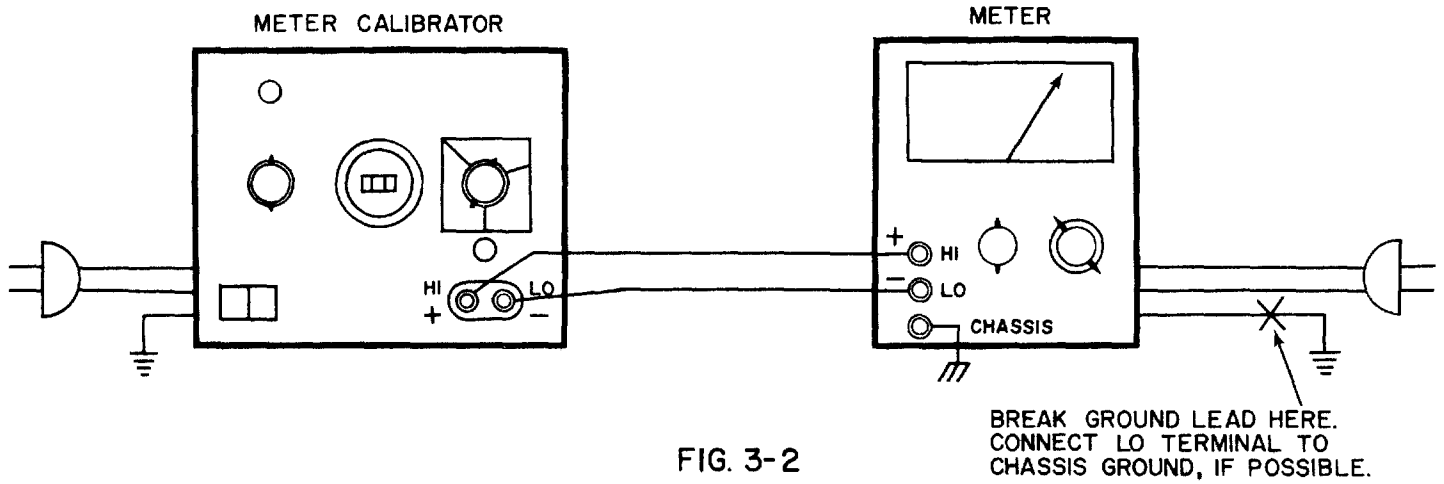
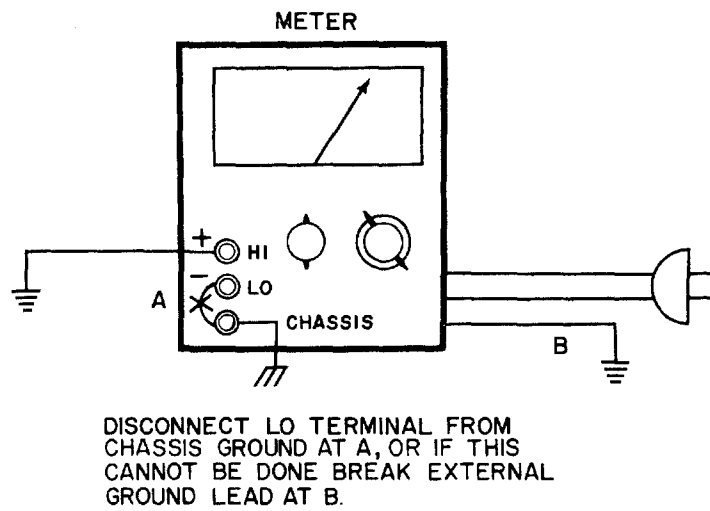


FIG. 3-2

II. TESTING CURRENT METERS FOR GROUND PROBLEMS

A)



B)

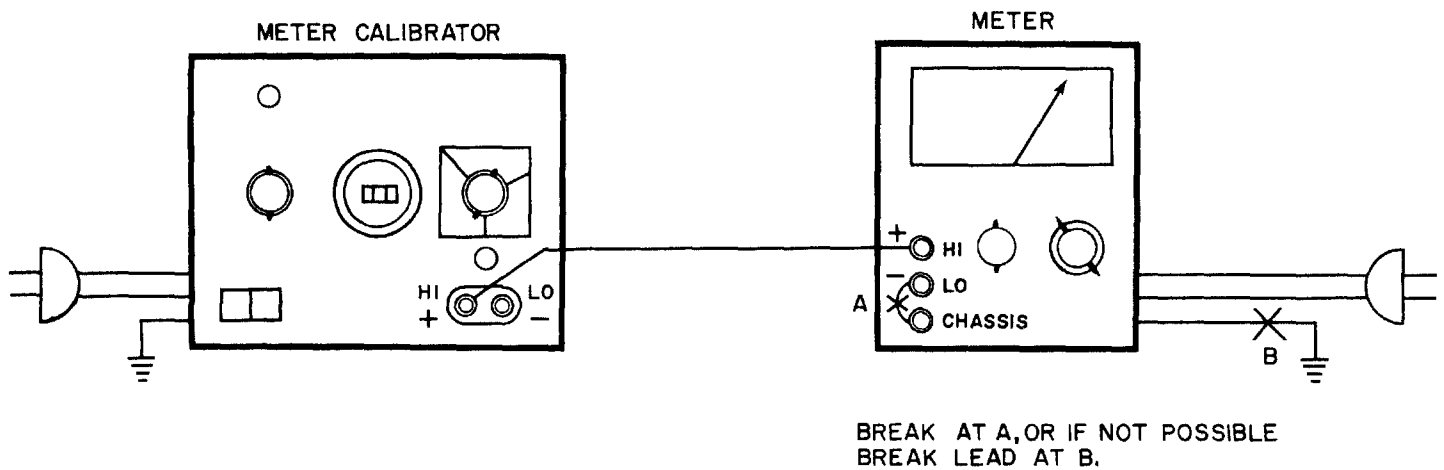


FIG. 3-3
3-5

3-30 With panel meters, multimeters, battery operated instruments and clip-on current meters which have no connection with earth ground, no grounding difficulties should be encountered in either the voltage or current ranges.

3-31 When calibrating line-operated meters which may have resistance and capacitance to earth ground and may generate currents between earth ground and the negative lead, some precautions are necessary in grounding. In voltage ranges the best procedure is to break any connection with earth ground in the meter being tested (as shown in figure 3-2), the ground connection being made through the negative terminal of the 6920B.

3-32 Line operated current meters, with the exception of clip-on models, require special care in grounding to avoid inaccurate measurements. Two quick tests, illustrated in figure 3-3, will show where problems exist.

- a. Remove any connection between the low or (-) meter terminal and ground. Ground the (+) or high terminal. The meter should read zero within the desired accuracy.
- b. Again with the (-) or LO meter terminal ungrounded, connect the (+), high, terminal to a +1 volt source, with respect to ground, AC for AC meters, DC for DC meters. The 1 volt range of the 6920B works well for this. To avoid possible damage to the meter, bring the voltage up slowly from zero until 1 volt is reached. If the meter still reads zero within the desired accuracy limits, no problem will be encountered in calibration if the LO (-) terminal is left ungrounded.

3-33 The above tests are accurate as long as the full-current voltage drop across the meter is small compared with 1 volt. Any guard shields present in the meter should be connected to the (-), LO, terminal but not to ground.

3-34 If the tests in 3-32 show that problems do exist, figure 3-4 shows a way of curing the problem. A (+1) amplifier such as the DY-2460A Solid State DC amplifier with DY-2461A-M4 plus-one gain plug-in is used to isolate the low-side terminal of the meter from the LO (-) terminal of the 6920B.

3-35 Calibrating True RMS AC Meters

3-36 In AC ranges the output waveform of the 6920B will be the same as that of the input power line, which will not be perfectly sinusoidal. The AC reference of the meter calibrator insures that the average value of the output will remain correct regardless of line distortion. The output dial is calibrated in terms of the sinusoidal RMS equivalent of the average value of the output. Thus, any AC meter which is average-sensing, RMS calibrated will be correctly calibrated. Meters of this type include multimeters and most electronic and digital voltmeters.

3-37 For true-reading RMS meters an error will exist as a function of the line distortion. Table 3-2 shows the possible error in terms of second, third and fourth harmonic content of the line.

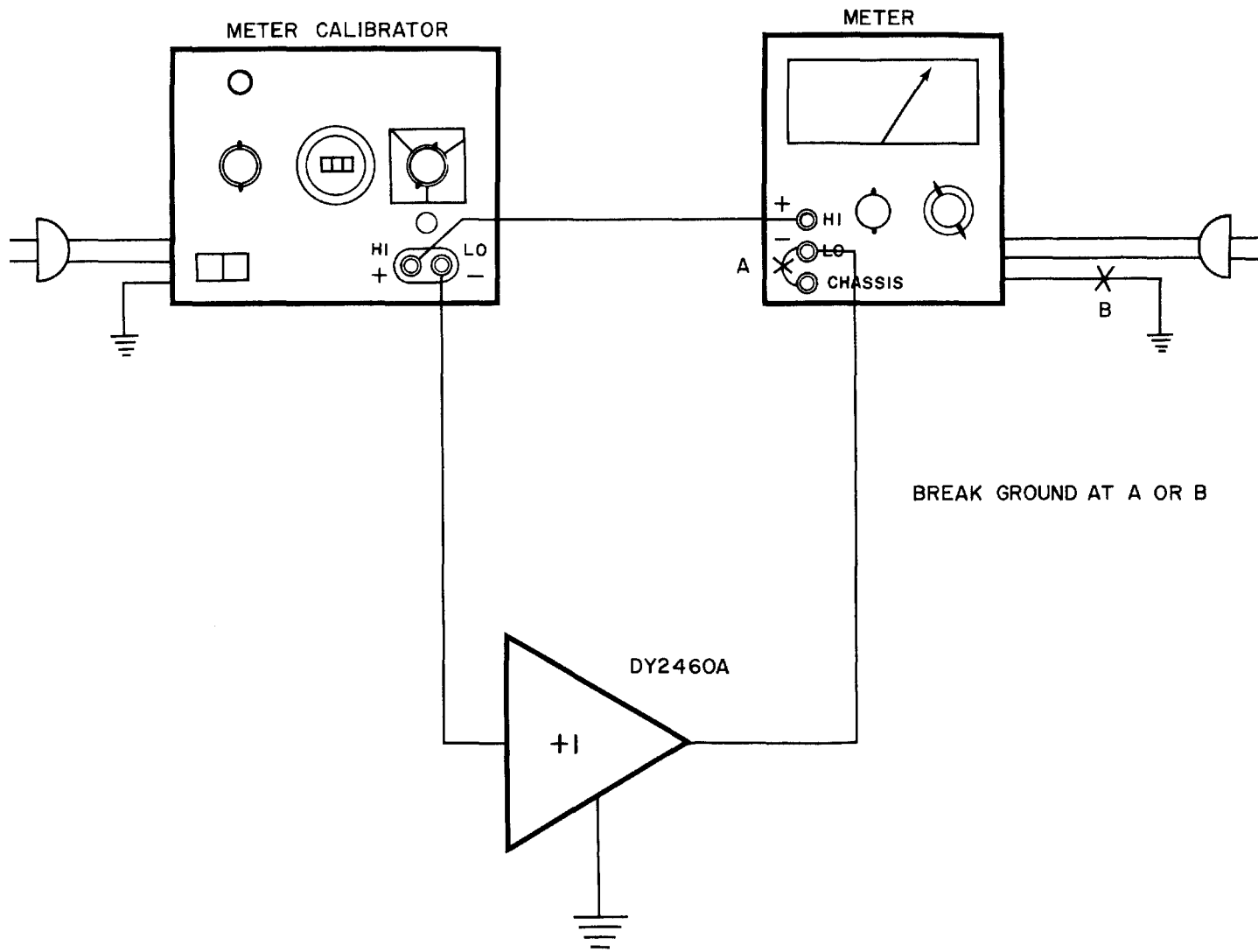


FIG. 3-4
 ELIMINATING GROUND PROBLEMS
 WITH +I AMPLIFIER

TABLE 3-2

OUTPUT ERROR DUE TO
LINE WAVEFORM DISTORTION

| % HARMONIC | % ERROR AVERAGE-SENSING RMS CALIBRATED METER | % ERROR TRUE RMS METER |
|---------------|--|---------------------------|
| 0 | 0 | 0 |
| 1% Second | 0 | -0% to +0.02% |
| 2% Second | 0 | -0% to +0.02% |
| 5% Second | 0 | -0% to +0.12% |
| 10% Second | 0 | -0% to +0.50% |
| 20% Second | 0 | -0.07% to +1.98% |
| 1% Third | 0 | -0.65% to +0.69% |
| 2% Third | 0 | -0.65% to +0.69% |
| 5% Third | 0 | -1.54% to +1.79% |
| 10% Third | 0 | -3.14% to +3.53% |

3-38 If greater accuracy is needed for true RMS meters, an external sine wave oscillator capable of supplying 60 cps, 15 volts \pm 10% at 2ma, can be used to supply the signal to the AC reference regulator. To do this, refer to figure 3-5. Disconnect the lead at terminal 2 of Transformer T1. Connect a pair of shielded leads from the 15 volt AC source to the points shown, the low side going to A1 and the high side going to A2.

NOTE: The calibrator should never be operated without the 15 volt AC being present as damage to the inverter may result.

3-39 Effects of Rapid Line Voltage Changes

3-40 In order to prevent distortion of the AC waveform in the AC reference circuit, the AC reference feedback loop has been made slow compared with 60 cps. Hence, sudden changes in line voltage will not be immediately corrected, producing a momentary shift in the AC output. If a particularly noisy line is causing excessive instability of the AC output, an external oscillator capable of supplying 60 cps, 15 volt \pm 10% at 2ma, can be used to replace the line-derived AC input normally used. See paragraph 3-38 and figure 3-5 for instructions on this procedure.

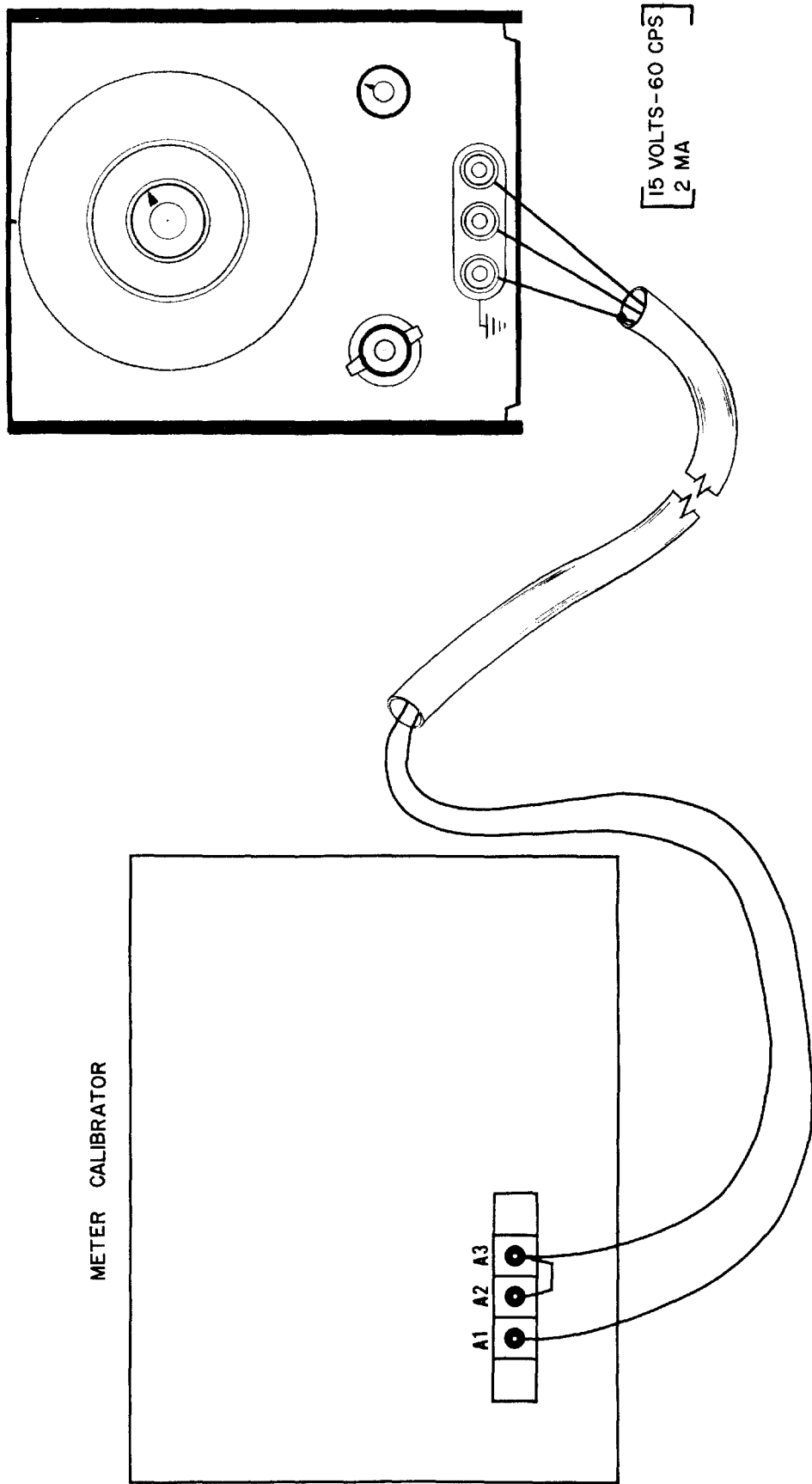


FIG. 3-5
 USE OF EXTERNAL OSCILLATOR
 TO OPERATE AC REFERENCE

SECTION IV PRINCIPLES OF OPERATION

4-1 INTRODUCTION

4-2 The 6920 B is a multiple-range AC/DC power supply which is suitable for the calibration of voltage and current meters. An inverter circuit is used following a DC series regulator transistor. This provides AC which is fed to a transformer. The various secondary windings provide current up to 5 amps and voltage to 1000 volts. The square wave output is rectified and filtered and supplied to the output terminals.

4-3 A closed-loop feedback system controls the output by comparing a reference voltage, set by the output dial, with a suitable measure of the output. The voltage difference is amplified and operates the series regulator transistor.

4-4 AC operation is similar with the exception that an AC reference is used. The rectifiers are bypassed at the secondary of the output transformer and a synchronous demodulator, in the error amplifier, keyed at the inverter frequency is used to maintain negative feedback during both halves of the inverter cycle.

4-5 Auxiliary circuits include a protective current limit, an over-voltage trip circuit, and an amplifier to maintain the inverter transformer in a state of DC balance. An output indicator lamp is used to show the state of the over-voltage trip.

4-6 BLOCK DIAGRAM

4-7 Figure 4-1 shows an over-all block diagram of the Model 6920B. The output signal is sampled by the range divider to obtain a signal which is 1 volt for full output. In the voltage ranges this is a voltage divider, for example 1000:1 in the 1000 volt range. In current ranges it is a series monitoring resistor; for example, 1000 ohms in the 1ma range. The range resistor configurations are shown in figure 4-2. This signal is fed back to the input amplifier where it is compared with a variable reference voltage, set by means of the output which operates R4.

4-8 The output of the error amplifier is delivered to the synchronous demodulator. In DC this demodulator is bypassed, its function being taken by the output power rectifiers. In AC, the demodulator reverses the amplifier polarity whenever the inverter switches.

4-9 The demodulator feeds a signal to the power regulator. Here the error signal is further amplified and used to control a series regulator power amplifier.

4-10 INVERTER

4-11 The output of the series regulator is applied to an inverter consisting of transistors Q14 and Q15, which is driven synchronously with the AC power line. In the DC mode of operation this produces a square wave signal which is suitable for applying to the output transformer.

4-12 In AC, because the AC reference, the synchronous demodulator and the inverter are all synchronized with the AC power line, the signal applied to the inverter appears as a full-wave rectified sinusoidal waveform. After passing through the inverter the desired sine wave is obtained on the transformer primary.

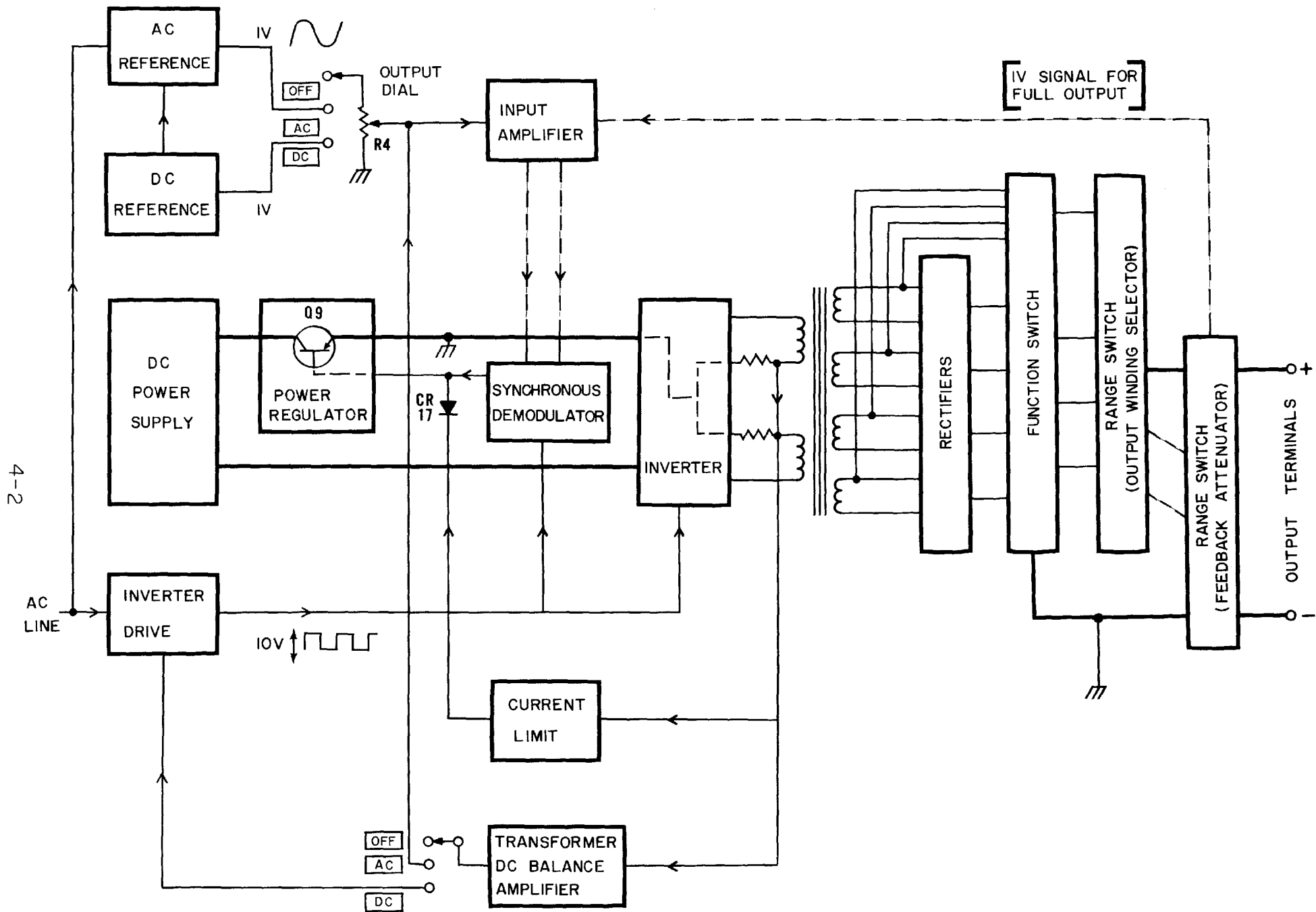


FIG. 4-1
FUNCTIONAL BLOCK DIAGRAM

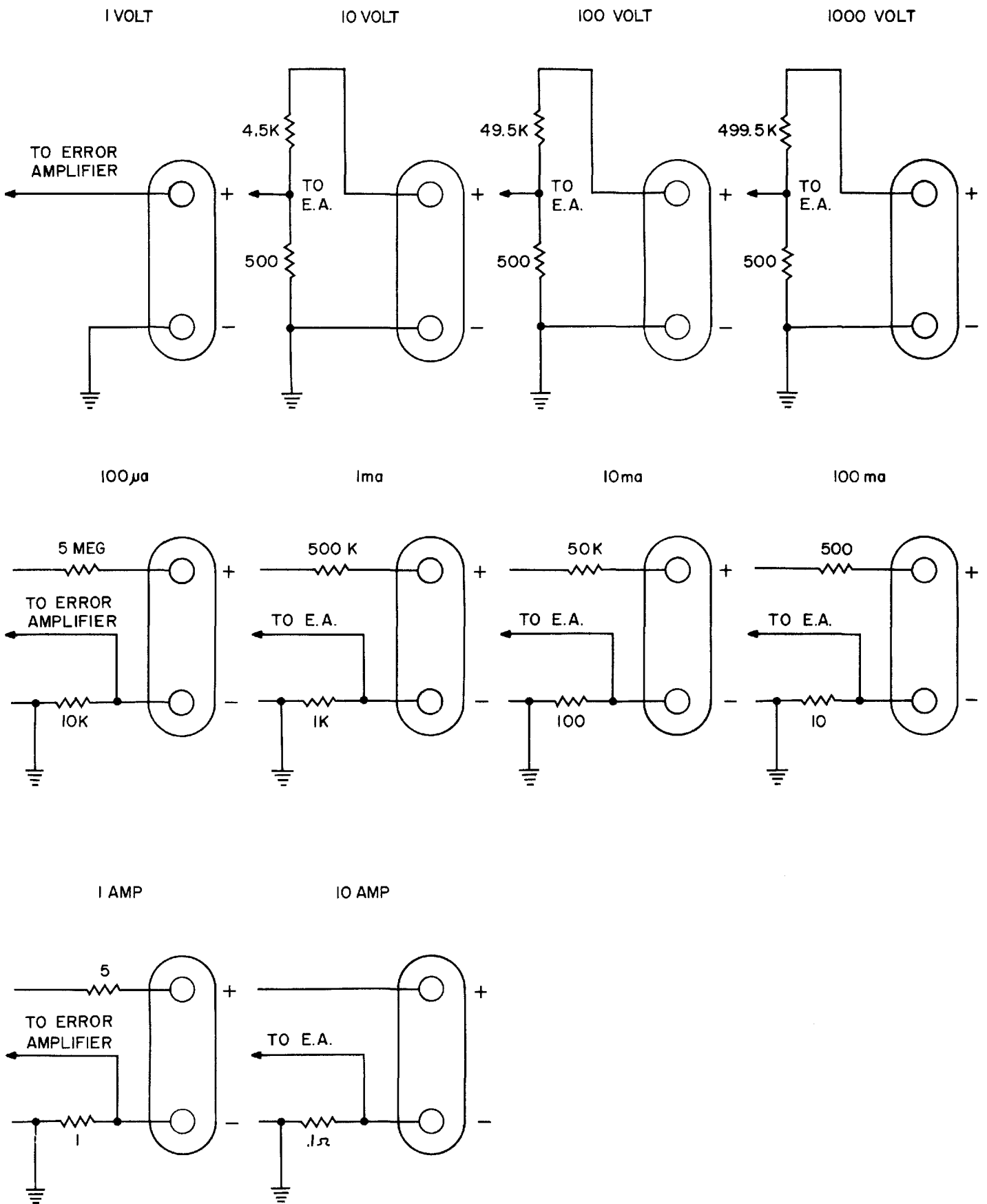


FIG. 4-2
RANGE RESISTOR CONFIGURATION

4-13 OUTPUT TRANSFORMER

4-14 The output transformer changes the power on its primary to one of four impedance levels which are associated with its four secondary windings; these levels correspond to 1000V at 10ma, 100V at 100ma, 10V at 1A and 2V at .5A.

4-15 FUNCTION SWITCH

4-16 This switch selects whether the transformer output is to be rectified or not. In the AC mode of operation the output rectifiers are bypassed. It also selects the AC or DC reference, bypasses the synchronous demodulator in DC and changes the feedback loop equalizers.

4-17 RANGE SWITCH

4-18 The range switch selects the output windings appropriate to the selected output voltage or current range. In addition, it selects the proper divider or series resistor, in current ranges, to provide the 1 volt/full-output sample of the output signal. In figure 4-2 the range resistor configuration for each of the ten ranges is shown.

4-19 DC REFERENCE

4-20 A 6.2 volt temperature compensated reference diode is used as the DC reference. Circuitry is used to minimize the current changes through this diode with changes in the input line. The reference circuit also supplies +12.6 volts and -9.4 volts to operate the low-level error amplifiers.

4-21 AC REFERENCE

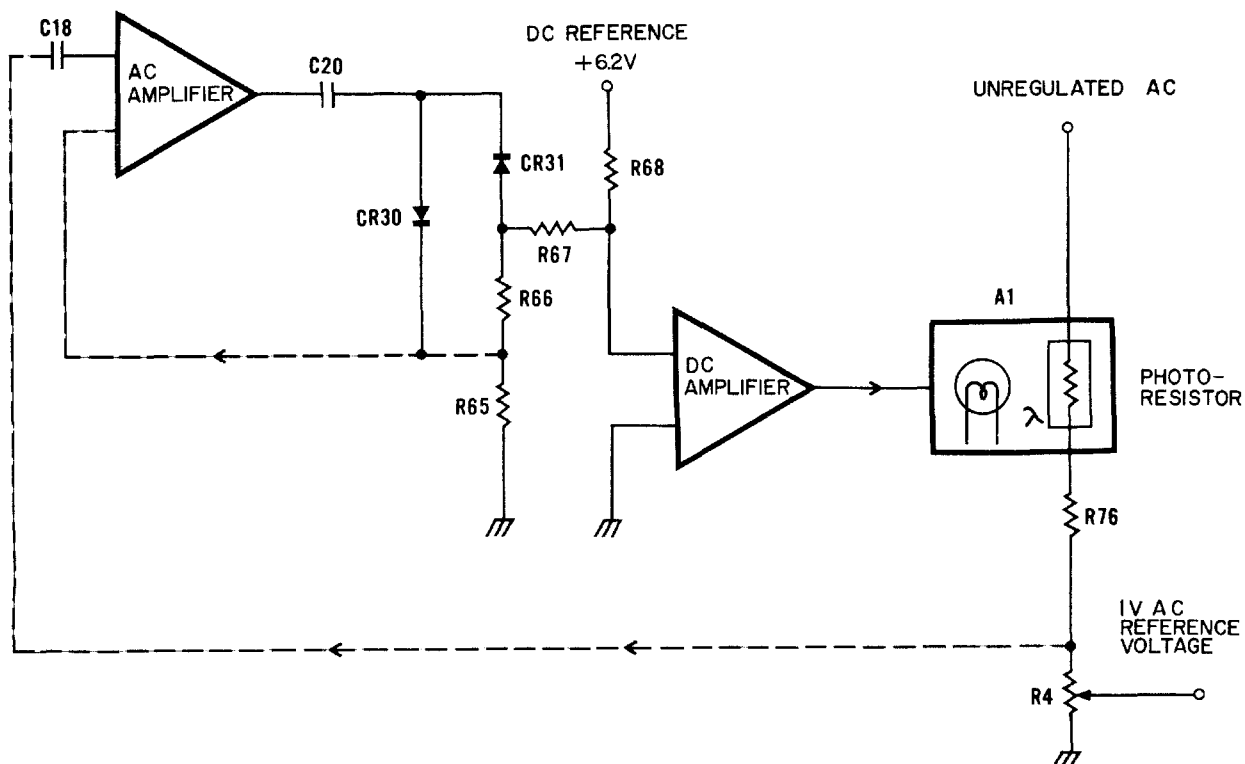


FIG. 4-3
AC REFERENCE

4-22 The AC reference voltage is obtained by taking an AC signal derived from the AC line and controlling its amplitude with a photo-resistor. The AC so obtained is accurately converted to DC, proportional to the average AC. This signal is compared with the DC reference. A DC amplifier consisting of transistors Q1, Q3 and Q5 amplifies the error and drives an incandescent lamp which affects the photo-resistor in such a way as to restore the AC reference to the desired value. A block diagram of this circuit appears in figure 4-3.

4-23 AC to DC conversion is accomplished by an AC-coupled feedback amplifier containing diodes CR30 and CR31 which drive its feedback network. This configuration has the advantage that changes in diode resistance with voltage and temperature have little effect on the accuracy of the AC to DC conversion process.

4-24 BALANCE AMPLIFIER

4-25 An amplifier consisting of Q30 and Q31 is connected to sense the average DC in the transformer primary by means of resistors R46 and R47 as shown in figure 4-4. If a DC unbalance exists, the amplifier output is used to make correction in the circuit to balance the primary current. In the DC mode of operation the timing of the inverter is changed in such a way as to make the "ON" time of one of the two inverter transistors slightly longer with respect to the other. In AC, the balance amplifier output changes the DC level of the AC reference signal which has the effect of balancing the transformer DC.

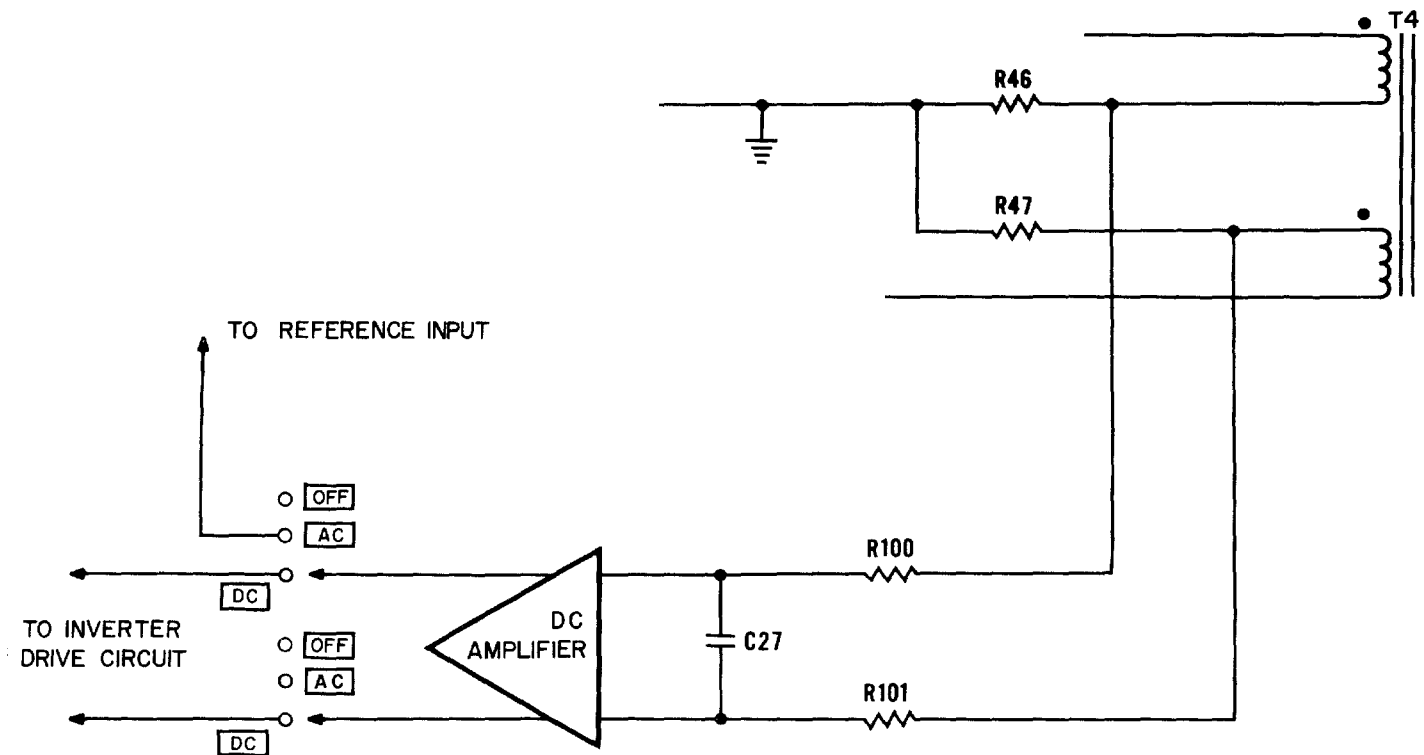


FIG. 4-4
TRANSFORMER DC BALANCE AMPLIFIER

4-26 INVERTER

4-27 The inverter consists of transistors Q14 and Q15 which are driven as switches to apply the output of the series regulator alternately to each half of the output transformer primary. This allows use of a transformer to step up the voltage or current for the output

4-28 INVERTER DRIVER

4-29 A signal obtained from the AC line is used to synchronize the switching of the inverter driver. This signal is applied at the bases of Q26 and Q27. Speed-up networks R87 and C25 and R89 and C26 make the transition from one state to the other more rapid. Transistors Q26 and Q27 drive transistors Q28 and Q29 which in turn drive the inverter transistors.

SECTION V MAINTENANCE

5-1 INTRODUCTION

5-2 This section contains maintenance and service information for the 6920 . The section includes recommended test equipment, performance checks, replacement, repair, and adjustment procedures and troubleshooting charts.

5-3 TEST EQUIPMENT

5-4 Table 5-1 lists recommended test equipment to be used in performance checks and adjustments.

5-5 PERFORMANCE CHECKS

5-6 The performance check procedures are used to check the 6920 against its specifications. All checks are made from the front panel. Thus, the procedures are useful as incoming or outgoing quality control, periodic maintenance, or after repair checks.

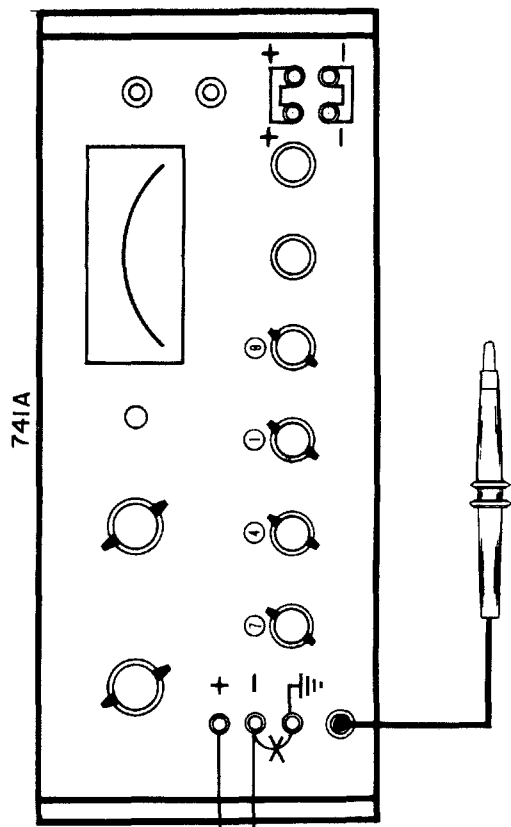
5-7 Refer to the instructions printed on the front panel for general operating procedures.

5-8 GENERAL CHECK

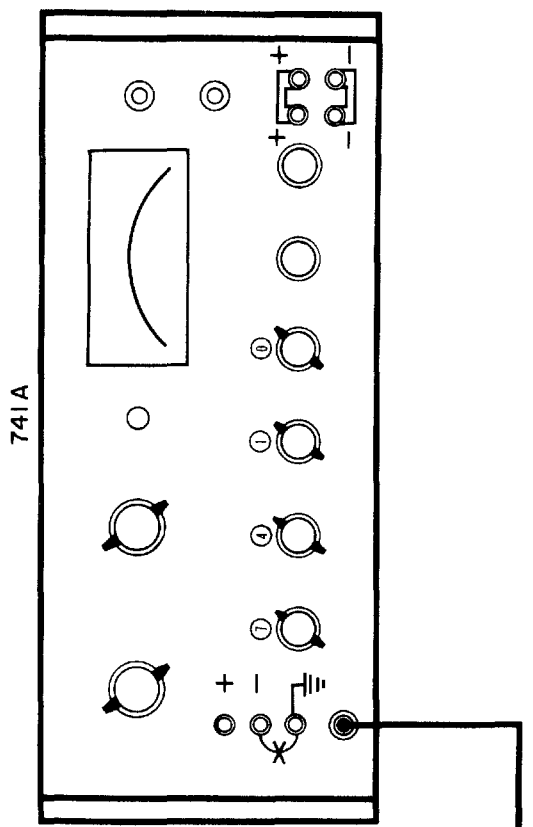
- A. Turn OUTPUT switch "OFF".
- B. Pilot should light when FUNCTION switch is at "AC" or "DC".
- C. Set output dial to (1)000.
- D. With "RANGE" in any of the four voltage ranges, yellow "OUTPUT INDICATOR" should light when the "OUTPUT" switch is turned "ON".
- E. With output terminals shorted and "RANGE" in any of the six current ranges, the yellow "OUTPUT INDICATOR" should light when the "OUTPUT" switch is turned "ON". On the 10 Amp range, the output dial should be set at 500.

5-9 VOLTAGE CALIBRATION CHECK

- A. Allow unit to warm-up one hour.
- B. Connect equipment as shown in Figure 5-1.
- C. Switch FUNCTION to DC and RANGE to 1 Volt.
- D. Set Voltmeter range to 1 Volt DC.
- E. Set output dial to (1)000.
- F. Voltmeter should indicate 1.000 V ± 0.003 V.
- G. Set output dial to 100.
- H. Voltmeter should indicate 0.100 V ± 0.0012 V.
- I. Similarly, check the remaining three DC VOLTAGE ranges and the four AC VOLTAGE ranges, referring to Table 5-2 for dial settings and tolerances.

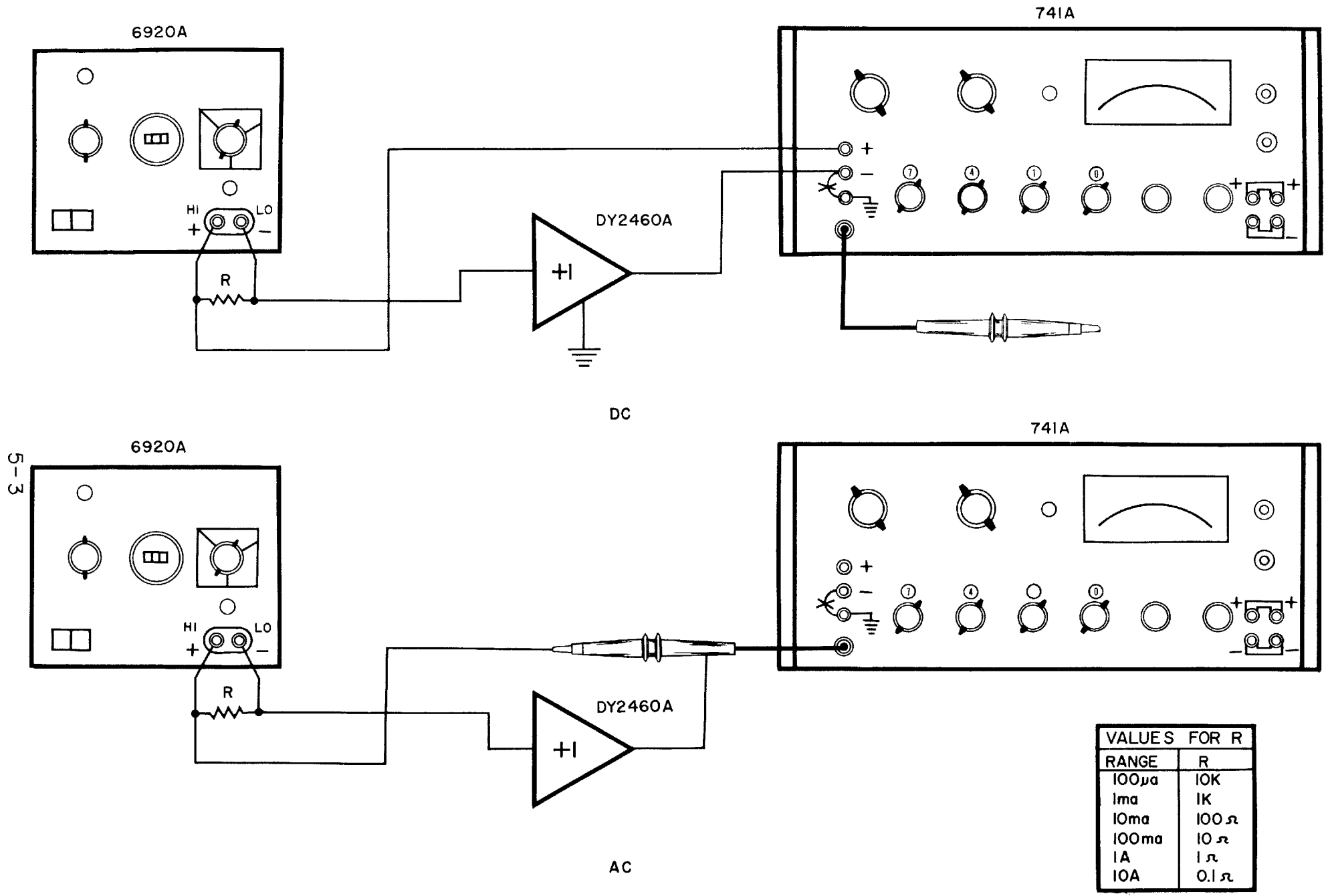


DC



AC

FIG. 5-1
CHECKING VOLTAGE CALIBRATION



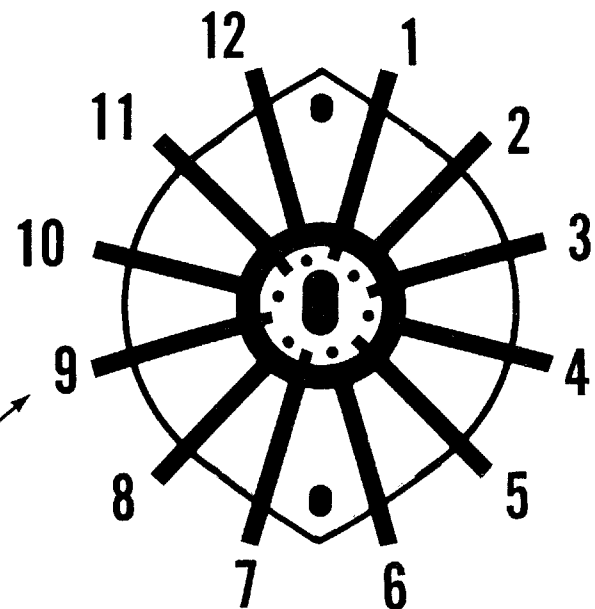
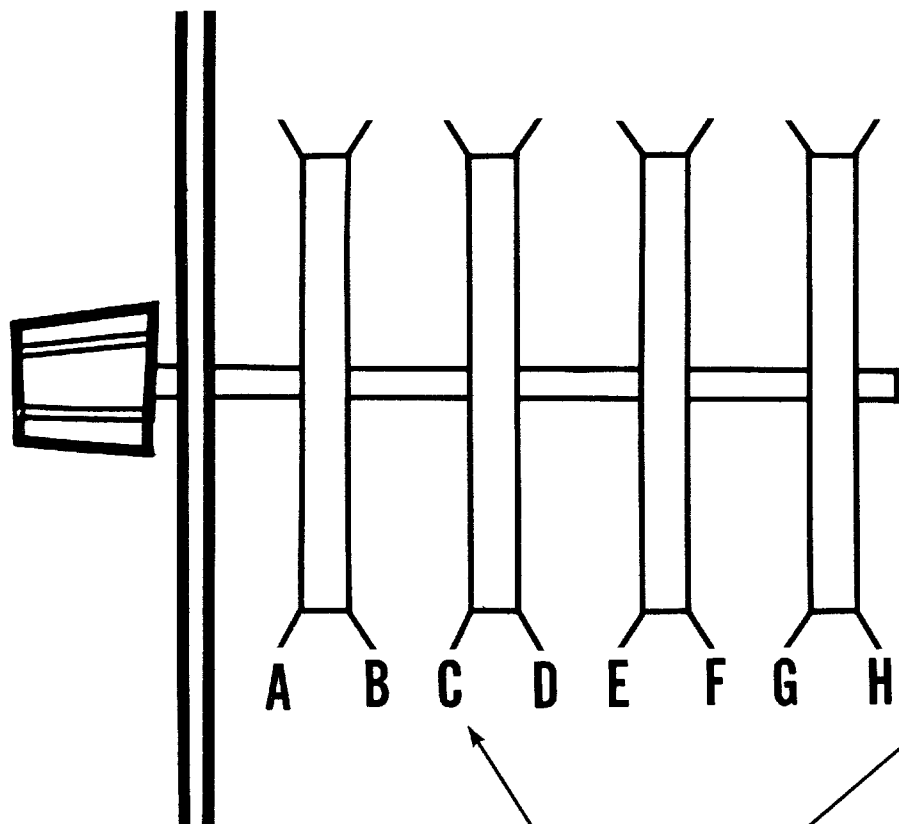
5-3

FIG.5-2
CHECKING CURRENT CALIBRATION

TABLE 5-1

| Instrument Type | Required Characteristics | Use | Suggested Test Equipment |
|--------------------------------------|--|--|---|
| AC Voltmeter | Accuracy of $\pm 1\%$ 90-130 Volts Expanded Scale | Measure Input Line Voltage | Triplett Model 420M |
| Variable Transformer | 100-130 Volt Ranges 5 Amp Current Capacity | Change AC Input Voltage | Superior Type Q116U |
| Oscilloscope | 200 μ v/cm Sensitivity Differential Input | Measure Ripple Transient Response | HP Model 130C |
| Differential Volt- Meter AC/DC | 1 mv Resolution Ranges 1V to 1000V | Measure Output Accuracy | HP Model 741A |
| Shunt Resistors | .05% Accuracy 10K 1K 100 ohms 10 ohms .1 watt 1 ohm 1 watt 0.1 ohm 2.5 watts | Measure Output Current | Gen. Radio 500-5 500-4 500-D 500-B Leeds & Northrp 4020-B 4221-B |
| +1 Amplifier | 1 Volt rms Output Capability | Isolate ground loops in measuring setup | Dymec DY-2460-A with DY-2461A-M4 Plug-in |
| 2 Resistance Decades | 1% Accuracy 10 ohms to 100K per step | Select Value of Calibration Resistors | Precise Model 468 |

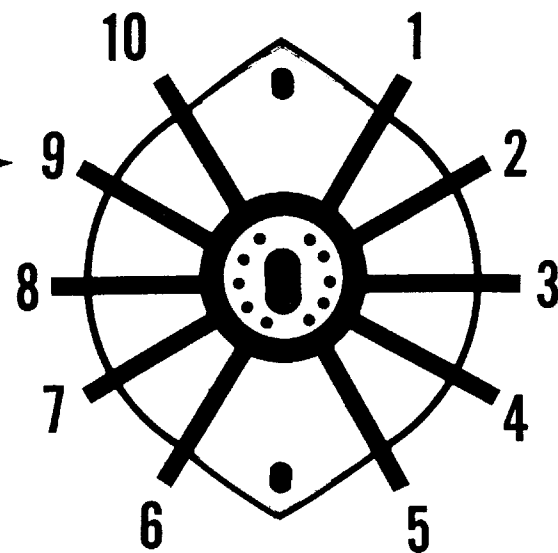
AS SEEN FROM FRONT



12 CLIP SECTION

EXAMPLE: I C 9

SWITCH SI



10 CLIP SECTION

FIG. 5-3
SWITCH CONTACT LOCATIONS

5-5

TABLE 5-2

| Range | Setting | Output | % Error DC | % Error AC |
|-------------|---------|---------------|--------------------|-------------------|
| 1V | (1)000 | 1.000V | ± 3 mv | ± 5 mv |
| | 100 | 0.100V | ± 1.2 mv | ± 1.4 mv |
| 10V | (1)000 | 10.000V | ± 30 mv | ± 50 mv |
| | 100 | 1.00V | ± 12 mv | ± 14 mv |
| 100V | (1)000 | 100.00V | ± 300 mv | ± 500 mv |
| | 100 | 10.0V | 120 mv | 140 mv |
| 1000V | (1)000 | 1000.V | ± 3 V | ± 5 V |
| | 100 | 100.V | 1.2V | ± 1.4 V |
| 100 μ a | (1)000 | 100.0 μ a | ± 0.3 μ a | ---- |
| | 100 | 10.0 μ a | ± 0.12 μ a | ---- |
| 1 ma | (1)000 | 1.000 ma | ± 3 μ a | ± 5 μ a |
| | 100 | 100. μ a | ± 1.2 μ a | ± 1.4 μ a |
| 10 ma | (1)000 | 10.00 ma | ± 30 μ a | ± 50 μ a |
| | 100 | 1.00 ma | ± 12 μ a | ± 14 μ a |
| 100 ma | (1)000 | 100.0 ma | ± 300 μ a | ± 500 μ a |
| | 100 | 10.0 ma | ± 120 μ a | ± 140 μ a |
| 1 Ampere | (1)000 | 1.000 Ampere | ± 3 ma | ± 5 ma |
| | 100 | 0.100 Ampere | ± 1.2 ma | ± 1.4 ma |
| 10 Amperes | 500* | 5.00 Amperes | ± 20 ma | ± 30 ma |
| | 100 | 1.00 Ampere | ± 12 ma | ± 14 ma |

In all current ranges, when using the monitoring resistor values shown in Figure 5-2, the equivalent voltage tolerance will be as shown in the 1 Volt range.

*Except ± 2 mv DC, ± 3 mv AC.

5-10 If the line voltage is rapidly fluctuating, some instability may be noted in the AC ranges if an AC meter with rapid response is used. These fluctuations are normal and are due to the slow speed of the feedback loop controlling the AC reference.

5-11 CURRENT CALIBRATION CHECK

- A. Allow unit to warm-up 1 hour.
- B. Connect equipment as shown in Figure 5-2.
- C. With OUTPUT switch "OFF", switch FUNCTION to DC and RANGE to $100\mu\text{a}$.
- D. Connect a 10K ohm $\pm .05\%$ resistor across the output terminals as in Figure 5-2.
- E. With OUTPUT "ON" check calibration at (1)000 and 100 on the dial, referring to Table 5-2 for tolerances.
- F. Check the remaining current ranges, using monitoring resistors as shown in Figure 5-2 and referring to the tolerances in Table 5-2.

NOTE: Do not operate the 6920 in any current range with the OUTPUT "ON" without a suitable resistor across the output terminals, as dangerous voltages can occur.

5-12 REFERENCE REGULATOR CHECK

- A. Connect a variable Auto-Transformer and Line Voltage Meter ahead of the AC input of the 6920 .
- B. Connect power equipment as for the 1 volt calibration check.
- C. Output dial to (1)000.
- D. Set the input line voltage to 105 VAC and record the output voltage.
- E. Raise the line voltage to 125 VAC and again record the output voltage.
- F. Repeat the measurements in the AC mode with FUNCTION at AC, recording the AC output at 105V and 125 VAC line.
- G. The measurements obtained should be within ± 3 mv of 1.000 volt in DC and ± 5 mv of 1.000 volts in AC.

5-13 ADJUSTMENTS AND CALIBRATIONS

NOTE

Before performing any adjustments or calibrations turn-on the meter calibrator and allow a one hour warmup.

5-14 Inverter Phasing

- A. Set controls on meter calibrator as follows:

| | | |
|-------------------|---|-------------|
| FUNCTION SELECTOR | - | AC |
| RANGE switch | - | 1-volt |
| OUTPUT SWITCH | - | OFF (RESET) |
| Dial | - | (1)000 |

- B. Direct couple vertical input of oscilloscope between test points 1 and 4 (ground). Set oscilloscope for 0.5v/cm vertical sweep.

C. AC couple the external trigger input of the oscilloscope to the junction of R90 and the collector of Q28. (For physical convenience connect to the end of R90 that is located nearest to potentiometer R7.) Adjust the oscilloscope triggering level so that reversing the triggering polarity control of the oscilloscope causes a phase reversal of the sine wave displayed on the oscilloscope.

D. Check the position of the DC base line on the oscilloscope by shorting the vertical input probe to ground.

E. Reconnect vertical input probe to test point 1 and adjust R86 so that the sine wave display starts at the DC base line (± 0.1 volt tolerance.)

F. Reverse the triggering polarity control on oscilloscope (sine wave display should reverse phase) and adjust R78 so that the sine wave display starts at the DC base line (± 0.1 volt tolerance).

5-15 Balance Amplifier

- A. Set controls on the meter calibrator as follows:

| | | |
|-------------------|---|---------|
| FUNCTION SELECTOR | - | AC |
| RANGE switch | - | 1-volt |
| OUTPUT SWITCH | - | ON HOLD |

B. Connect DC voltmeter between test points 11 and 12. (DC voltmeter should have at least 5mv resolution at zero.)

- C. Adjust R99 for 0 ± 5 mv Indication on DC voltmeter.

5-16 Dial Phasing (AC Zero)

A. Set controls on meter calibrator as follows:

| | | |
|-------------------|---|---------|
| FUNCTION SELECTOR | - | AC |
| RANGE switch | - | 1-volt |
| OUTPUT SWITCH | - | ON HOLD |
| Dial | - | 010 |

B. Connect AC voltmeter with 10 mv range and 2% accuracy across front-panel output terminals. AC voltmeter indication should be 10 ± 0.25 mv.

C. If AC voltmeter indication is incorrect, loosen the two Allen-head setscrews that are recessed in the knob of the dial, gently push the knob inward to disengage the knob gear from the dial gear, and rotate the knob as necessary to obtain a 10 ± 0.25 mv indication (dial remains at 010). Gently pull the knob forward to engage the gears and then tighten the setscrews.

5-17 AC Calibration

A. Set controls on meter calibrator as follows:

| | | |
|-------------------|---|---------|
| FUNCTION SELECTOR | - | AC |
| RANGE switch | - | 1-volt |
| OUTPUT SWITCH | - | ON HOLD |
| Dial | - | (1)000 |

B. Connect AC voltmeter with 1-volt range and 0.1% accuracy across front-panel output terminals.

C. Adjust R69 for 1 ± 0.001 volt indication on AC voltmeter.

5-18 DC Zero

A. Set controls on meter calibrator as follows:

| | | |
|-------------------|---|---------|
| FUNCTION SELECTOR | - | DC |
| RANGE switch | - | 1-volt |
| OUTPUT SWITCH | - | ON HOLD |
| Dial | - | 010 |

B. Connect DC voltmeter with 10-mv range and 2% accuracy across front-panel output terminals.

C. Adjust R7 for 10 ± 0.25 mv indication on DC voltmeter.

5-19 DC Calibration

A. Set controls on meter calibrator as follows:

| | | |
|-------------------|---|---------|
| FUNCTION SELECTOR | - | DC |
| RANGE switch | - | 1-volt |
| OUTPUT switch | - | ON HOLD |
| Dial | - | (1)000 |

B. Connect DC voltmeter with 1-volt range and 0.05% accuracy across front-panel output terminals.

C. Adjust R1 for 1 ± 0.0005 volt indication on DC voltmeter

5-20 0.1 MA DC Zero

A. Set controls on meter calibrator as follows:

| | | |
|-------------------|---|--------|
| FUNCTION SELECTOR | - | DC |
| RANGE switch | - | 0.1 ma |
| OUTPUT SWITCH | - | OFF |
| Dial | - | 010 |

B. Connect DC ammeter with 1-ua range and 5% accuracy across front-panel output terminals. Set OUTPUT SWITCH to ON HOLD.

C. Adjust R22 for 1 ± 0.05 ua indication on DC ammeter.

SECTION VI
REPLACEABLE PARTS

6-1 INTRODUCTION

6-2 This section contains information for ordering replacement parts.

6-3 Table 6-1 lists parts in the alpha-numerical order of the circuit designators and provides the following information:

- A. Description (See list of abbreviations below).
- B. Total quantity used in the instrument.
- C. Manufacturer's part number.
- D. Manufacturer.
- E. The Manufacturer's code number as listed in the Federal Supply Code for Manufacturers H4-1.
- F. The H-P Part Number.
- G. The recommended spare parts quantity for complete maintenance during one year of isolated service. (Column A).

6-4 ORDERING INFORMATION

6-5 To order replacement parts, address order or inquiry either to your authorized Harrison Laboratories sales representative or to Customer Service, Harrison Laboratories, 100 Locust Avenue, Berkeley Heights, New Jersey.

6-6 Specify the following information for each part:

- A. Model and complete serial number of instrument.
- B. Circuit reference designator.
- C. Description.

6-7 To order a part not listed in Table 6-1, give a complete description of the part and include its function and location.

Reference Designators

| | | | | | |
|----|---------------------------|----|--------------|-----|---|
| A | = assembly | K | = relay | T | = transformer |
| B | = motor | L | = inductor | V | = vacuum tube, neon bulb, photocell, etc. |
| C | = capacitor | M | = meter | X | = socket |
| CR | = diode | P | = plug | XF | = fuseholder |
| DS | = device signaling (lamp) | Q | = transistor | XDS | = lampholder |
| E | = misc. electronic part | R | = resistor | Z | = network |
| F | = fuse | RT | = thermistor | | |
| J | = jack | S | = switch | | |

ABBREVIATIONS

| | | | |
|-------|------------------------------|------------------|----------------------------------|
| a | = amperes | K | = kilo = 1000 |
| c | = carbon | obd | = order by description |
| cer | = ceramic | p | = peak |
| coef | = coefficient | pc | = printed circuit board |
| com | = common | pf | = picofarads = 10^{-12} farads |
| comp | = composition | pp | = peak-to-peak |
| conn | = connection | ppm | = parts per million |
| crt | = cathode-ray tube | pos | = position (s) |
| dep | = deposited | poly | = polystyrene |
| elect | = electrolytic | pot | = potentiometer |
| encap | = encapsulated | prv | = peak reverse voltage |
| f | = farads | rect | = rectifier |
| fxd | = fixed | rot | = rotary |
| GE | = germanium | rms | = root-mean-square |
| grd | = ground (ed) | s-b | = slow-blow |
| h | = henries | sect | = section (s) |
| Hg | = mercury | Si | = silicon |
| impgr | = impregnated | sil | = silver |
| ins | = insulation (ed) | sl | = slide |
| lin | = linear taper | td | = time delay |
| log | = logarithmic taper | TiO ₂ | = titanium dioxide |
| m | = milli = 10^{-3} | tog | = toggle |
| M | = megohms | tol | = tolerance |
| ma | = milliamperes | trim | = trimmer |
| μ | = micro = 10^{-6} | twt | = traveling wave tube |
| mfr | = manufacturer | var | = variable |
| mtg | = mounting | w/ | = with |
| my | = mylar | W | = watts |
| NC | = normally closed | ww | = wirewound |
| Ne | = neon | w/o | = without |
| NO | = normally open | cmo | = cabinet mount only |
| nsr | = not separately replaceable | | |

MANUFACTURERS

| | | | |
|---------|------------------------------|----------|------------------------------|
| AB | Allen-Bradley | Kulka | Kulka Electric |
| B | Bendix Corporation | Mot | Motorola, Inc. |
| Beede | Beede Elec. Instr. Co., Inc. | RCA | Radio Corporation of America |
| Buss | Bussman Mfg. Company | Reliance | Reliance Mica Corporation |
| Carling | Carling Electric Company | Mica | |
| CTS | CTS Corporation | Semcor | Semcor Corporation |
| Elco | Elco Corporation | Sloan | Sloan Company |
| GE | General Electric Company | Sprague | Sprague Electric |
| GI | General Instrument Company | Superior | Superior Electric |
| HH | Hardwick-Hindle Company | Sylv | Sylvania Electric |
| Hoff | Hoffman Electric Company | TI | Texas Instruments |
| | | WL | Ward Leonard Electric |

Model 6920B

REVISION:

Note the following Changes in the 6920B Manual.

1. Add note on parts list (vacuum epoxy impregnate) on transformer T4 (HT6920T4-H372A).
2. Fuse F1 to be 1A Slo Blo 125V.
3. C15 not assigned.
4. Q10 to be 2N3417.
5. Q11, 12, 26, 27 to be SM9085.
6. Q28, 29 to be 853-0001.
7. R1 to be 100 ohms I.R.C. Type 100 2100-1450.
8. R7 to have locating pin $0.156 \begin{smallmatrix} +.025 \\ -.000 \end{smallmatrix}$ from mtg. surface.
9. Add 25k Ser. 70 Pot. in series with R82 and R83.
10. Remove (short) old R86
11. R82 and R83 to be 27k 1/2w.
12. R27 to be 500 ohm 7w.
13. R28 and R73 to be 1k 7w.
14. R69 to be 500 ohm I.R.C. Type 100 2100-0898.
15. CR8, CR9, CR10 to be G100D.
16. R40 to be 1.8k.
17. R17 to be 3.6k.
18. R97 to be 200k.
19. R8 to be 75k.
20. R75 to be 1.5k.
21. R39 OMIT (open ckt.).

22. R82 and R83 change to 39k 1/2w A,B.
23. Q10 to be N272.
24. R40 to be selected (normally can be omitted completely).
25. Reverse diode CR13 on P.C.B. and schematic
26. On P.C.Bds, use terminals USECO Type 12006-1 ONLY.

| Circuit Reference Number | Description | Quantity | Mfg. Part # or Type | Mfg. | Mfg. Code* | HP Part # | A |
|-----------------------------|---------------------------------------|----------|------------------------|----------|---------------|--------------|--------|
| A1 | Raysistor Photo Modular | 1 | CK1112P | Raytheon | 81453 | | 2 |
| C1,5,7 | fxd film .01 μ f 200 VDC | 3 | 192P10392 | Sprague | 56289 | 0160-0161 | 6 |
| C2 | fxd film .22 μ f 80 VDC | 1 | 192P2249R8 | Sprague | 56289 | | 2 |
| C3 | fxd film .033 μ f 200 VDC | 1 | 192P33392 | Sprague | 56289 | 0160-0163 | 2 |
| C4 | fxd elect 1 μ f 35 VDC | 1 | 150D105X9 035 A2 | Sprague | 56289 | 0180-0291 | 2 |
| C6 | fxd elect 1400 μ f 30 VDC | 1 | D38303 | Sprague | 56289 | | 2 |
| C8 | fxd film .001 μ f 200 VDC | 1 | 192P10292 | Sprague | 56289 | 0160-0153 | 2 |
| C9,18,25,26 | fxd elect 4.7 μ f 50 VDC | 4 | 150D475X 0050 B2 | Sprague | 56289 | | 8 8 |
| C10,24 | fxd elect 1200 μ f 20 VDC | 2 | D33269 | Sprague | 56289 | | 4 |
| C12 | fxd film .068 μ f 200 VDC | 1 | 192P68392 | Sprague | 56289 | 0160-0166 | 2 |
| C13, 16, 17 | fxd elect 100 μ f 50 VDC | 3 | D33218 | Sprague | 56289 | | 6 |
| C14 | fxd elect 20 μ f 15 VDC | 1 | 30D 206G 015 BB4 | Sprague | 56289 | | 2 |
| C15 | Not Used | - | | | | | |
| C19 | fxd film 510 μ f 500 VDC | 1 | CM15E511J | Arco | 84171 | | 2 |
| C20 | fxd elect 20 μ f 50 VDC | 1 | 30D 206G 050 DC4 | Sprague | 56289 | | 2 |
| C21 | fxd elect 100 μ f 25 VDC | 1 | 30D107G 025 DH4 | Sprague | 56289 | | 2 |
| C22, 28 | Not Assigned | - | | | | | |
| C23 | fxd elect 2250 μ f 10 VDC | 1 | D36218 | Sprague | 56289 | | 2 |
| C27 | fxd elect 100 μ f 6 VDC | 1 | D28145 | Sprague | 56289 | | 2 |
| C29 | fxd ceram. .02 μ f 2000 VDC Disc. | 1 | 41C321 | Sprague | 56289 | | 2 |
| C30 | fxd elect 5 μ f 150 VDC | 1 | 40D505 F 150 DD4 | Sprague | 56289 | | 2 |
| C31 | fxd elect 200 μ f 15 VDC | 1 | 30D 207G 015 DH4 | Sprague | 56289 | 0180-0104 | 2 |
| C32 | fxd elect 4400 μ f 2 VDC | 1 | D33267 | Sprague | 56289 | | 2 |

| Circuit Reference Number | Description | Quantity | Mfg. Part # or Type | Mfg. | Mfg. Code* | HP Part # | A |
|--|---|----------|------------------------|------------|---------------|--------------|----|
| CR1,2,52,53 | Rect. Si. 1.5A 100PRV | 4 | 1N1563 | Motorola | 04713 | | 8 |
| CR3 | SCR PRV 25 FBV 25 | 1 | 2N2322 | GE | 03508 | | 2 |
| CR4,11,14,18, 19,24,25,26, 27,37,38,39, 40,41,48,49, 50,51 | Rect. Si. 500ma 200 PRV | 18 | 1N3253 | RCA | 02735 | 1901-0026 | 36 |
| CR5,6,7,8,9, 10,12,13,20, 21,28,29, 32,34 | Rect. Si. 200 ma 10 PRV | 14 | 111S1 | Sylvania | 93332 | | 28 |
| CR15,16,22,23, 35,36,42,43 | Not Assigned | - | | | | | |
| CR17,30,31,33 | Diode Si. | 4 | 1N485B | Sylvania | 93332 | 1901-0033 | 8 |
| CR44,45,46,47 | Rect. Si. 50 ma 1600 PRV | 4 | 1N2359 | Elect Dev | 81751 | | 8 |
| DS1 | Indicator Light Neon | 1 | 858 R | Sloan | 08717 | 1450-0048 | 2 |
| DS1 (order with clip) | Indicator Light Incandescent 2.7V .06A | 1 | MCL-B-3 1738 | Tec. | 07137 | | 2 |
| F1 | Fuse Cartridge 2A @ 250V 3AG | 1 | 312002 | Littelfuse | 75915 | | 2 |
| L1 | Coil 100μh | 1 | 692095 | H-Lab | 09182 | | 2 |
| Q1 | Diff. Amp. | 1 | SA2361 | Amelco | 15818 | | 2 |
| Q2,3,4,5,6,13, 17,19,20,21, 22,23,30,31 | SS NPN Sil. | 14 | 4JX16B533 | GE | 03508 | | 28 |
| Q7,18,25,32 | Not Assigned | - | | | | | |
| Q8,9,33,34 | Power PNP Ger. | 4 | B1217 | Bendix | 83298 | | 8 |

6-4
6920A

| Circuit Reference | | Mfg. Part # | | Mfg. | HP | | |
|--|--|-------------|--------------|-----------|-------|-----------|-------------|
| Number | Description | Quantity | or Type | Mfg. | Code* | Part # | A |
| Q10 | SS NPN Ger. | 1 | N272 | TI | 01295 | | 2 |
| Q11,12 | SS PNP Ger. | 2 | GT2555 | GI | 11711 | | 4 |
| Q14,15 | Power PNP Ger. | 2 | B1203 | Bendix | 83298 | | 4 |
| Q16,26,27 | SS PNP Si. | 3 | S3251 | Fairchild | 07623 | 1853-0001 | 6 |
| Q24 | SS NPN Si | 1 | 4JX11C710 | GE | 03508 | | 2 |
| Q28,29 | SS PNP Ger. | 2 | 2N1378 | TI | 01295 | | 4 |
| R1 | Var ww 100 ohm | 1 | 3067-P-1-101 | Bourns | 80294 | | 2 |
| R2 | fxd ww 2430 ohm, 2490 ohm, (ohm) 2670, 2550 ohm, 2610 ohm, 1% 1/4 watt | 1 | Type TX154 | PRC | 48615 | | 1 (each) |
| R3,85,88,107 | fxd comp 510 ohm <u>+5%</u> 1/2watt | 4 | EB5115 | AB | 01121 | 0686-5115 | |
| R4 (F.P.) | var ww 500 ohm 10 turn <u>+3%</u> <u>+0.05%</u> lin. | 1 | 22018 | Borg. | 96791 | | 2 |
| R5,6,19,20,50,51 | fxd comp 5.1K ohm <u>+5%</u> 1/2watt | 6 | EB5125 | AB | 01121 | 0686-5125 | |
| R7 | var ww 250 ohm | 1 | Type 110-F4 | CTS | 11236 | | 2 |
| R8,39,75,97 | fxd comp Selective <u>+5%</u> 1/2 watt | 4 | --- | AB | 01121 | | |
| R9 | fxd comp 20K ohm <u>+5%</u> 1/2watt | 1 | EB2035 | AB | 01121 | 0686-2035 | |
| R10,61 | fxd comp 7.5K ohm " " | 2 | EB7525 | " | " | 0686-7525 | |
| R11 | fxd comp 6.2K ohm " " | 1 | EB6225 | AB | 01121 | 0686-6225 | |
| R12 | fxd comp 3.3K ohm " " | 1 | EB3325 | AB | 01121 | 0686-3325 | |
| R13,14 | fxd comp 430K ohm " " | 2 | EB4345 | AB | 01121 | 0686-4345 | |
| R15,16 | fxd comp 47K ohm <u>+5%</u> 1/2watt | 2 | EB4735 | AB | 01121 | 0686-4735 | |
| R17,62,76 | fxd comp 1.3K ohm <u>+5%</u> 1/2 watt | 3 | EB1325 | AB | 01121 | 0686-1325 | |
| R18 | fxd comp 22 meg. <u>+5%</u> 1/2watt | 1 | EB2265 | AB | 01121 | 0686-2265 | |
| R21 | fxd comp 10 meg. <u>+5%</u> 1/2 watt | 1 | EB1065 | AB | 01121 | 0686-1065 | |
| R22 | var comp 100K ohm Ser. 70 | 1 | HQ3427 | CTS | 71450 | | 2 |
| R23,33,34,36, 38,55,72,79, 80,100,101, | fxd comp 1K ohm <u>+5%</u> 1/2watt | 11 | EB1025 | AB | 01121 | 0686-1025 | |
| R24,48,49,57, 58,77,78,92,93,103 | Not Assigned. | - | | | | | |

6-5
6920A

| Circuit Reference Number | Description | Quantity | Mfg. Part # or Type | Mfg. Mfg. | Mfg. Code* | HP Part # | A |
|-----------------------------|--|----------|------------------------|--------------|---------------|--------------|---|
| R26 | fxd ww 200ohm <u>+5%</u> 20 watt | 1 | Type 2BRS-37 | HH | 73978 | | 2 |
| R27 | fxd ww 500 ohm " 5 watt | 1 | Type 5XM | WL | 63743 | | 2 |
| R28 | fxd ww 1K ohm <u>+5%</u> 5 watt | 1 | Type 5XM | WL | 63743 | | 2 |
| R29 | fxd ww 12 ohm <u>+5%</u> 20 watt | 1 | Type 2BRS-37 | HH | 73978 | | 2 |
| R30 | fxd comp 3K ohm <u>+5%</u> 1/2 watt | 1 | EB3025 | AB | 01121 | 0686-3025 | |
| R31 | fxd comp 10 ohm " " | 1 | EB1005 | AB | " | 0686-1005 | |
| R32, 37 | fxd comp 620 ohm " " | 2 | EB6215 | AB | 01121 | 0686-6215 | |
| R35, 40 | fxd comp 2K ohm " " | 2 | EB2025 | AB | 01121 | 0686-2025 | |
| R36, 108 | fxd comp 22 ohm " " | 2 | EB2205 | AB | " | 0686-2205 | |
| R41 | fxd comp 15K ohm " " | 1 | EB1535 | AB | " | 0686-1535 | |
| R42 | fxd comp 200 ohm " " | 1 | EB2015 | AB | " | 0686-2015 | |
| R43, 98 | fxd comp 5.6K ohm " " | 2 | EB5625 | AB | " | 0686-5625 | |
| R44, 45 | fxd comp 3.9K ohm " " | 2 | EB3925 | AB | " | 0686-3925 | |
| R46, 47 | fxd ww 0.5 ohm " 3 watt | 2 | Type 3X | WL | 63743 | | 4 |
| | 20ppm | | | | | | |
| R52 | fxd film 430 ohm <u>+5%</u> 2 watt | 1 | Type C42S | Corning | 16299 | | 2 |
| R53, 70 | fxd comp 10K ohm <u>+5%</u> 1/2 watt | 2 | EB1035 | AB | 01121 | 0686-1035 | |
| R54 | fxd ww 714 ohm <u>+1%</u> 1/4 watt | 1 | Type TX-154 | PRC | 48615 | | 2 |
| R56, 66 | fxd ww 634 <u>+1%</u> 1/4 watt | 2 | Type TX-154 | PRC | 48615 | | 4 |
| R59, 60 | fxd comp 100K ohm <u>+5%</u> 1/2watt | 2 | EB1045 | AB | 01121 | 0686-1045 | |
| R63, 96 | fxd comp 200K ohm <u>+5%</u> 1/2watt | 2 | EB2045 | AB | 01121 | 0686-2045 | |
| R64 | fxd comp 68 ohm <u>+5%</u> 1/2watt | 1 | EB6805 | AB | 01121 | 0686-6805 | |
| R65 | fxd ww 210 ohm <u>+1%</u> 1/4watt | 1 | Type TX-154 | PRC | 48615 | | 2 |
| R67 | fxd ww 2K ohm <u>+1%</u> 1/4watt | 1 | Type TX-154 | PRC | 48615 | | 2 |
| R68 | fxd ww 9530 ohm, 9760 ohm, 10.0K ohm, 10.2K ohm, 10.5K ohm <u>+1%</u> 1/4 watt | 1 | Type TX-154 | PRC | 48615 | | 1 |
| | | | | | | (each) | |
| R69 | var ww 500 ohm | 1 | 3067P-1-501 | Bourns | 80294 | | 2 |
| R71 | fxd comp 36K ohm <u>+5%</u> 1/2watt | 1 | EB3635 | AB | 01121 | 0686-3635 | |
| R73 | fxd ww 750 ohm <u>+5%</u> 5 watt | 1 | Type 5XM | WL | 63743 | | 2 |
| R74 | fxd comp 300 ohm <u>+5%</u> 1/2watt | 1 | EB3015 | AB | 01121 | 0686-3015 | |

| Circuit Reference Number | Description | Quantity | Mfg. Part # or Type | Mfg. | Mfg. Code* | Hp Part # | A |
|-----------------------------|---|----------|------------------------|---------|---------------|--------------|---|
| R81,84 | fxd comp 6.8K ohm $\pm 5\%$ 1/2 watt | 2 | EB6825 | AB | 01121 | 0686-6825 | |
| R82,83 | fxd comp 39Kohm " " | 2 | EB3935 | " | " | 0686-3935 | |
| R86 | var ww 10 ohm | 1 | Type 110-F4 | CTS | 11236 | | 2 |
| R87,89 | fxd comp 2.2K ohm $\pm 5\%$ 1/2 watt | 2 | EB2225 | AB | 01121 | 0686-2225 | |
| R90,91 | fxd film 56 ohm " 2 watt | 2 | Type C42S | Corning | 16299 | | 4 |
| R94, 95 | fxd comp 12K ohm " 1/2 watt | 2 | EB1235 | AB | 01121 | 0686-1235 | |
| R99 | var ww 100 ohm | 1 | Type 110-F4 | CTS | 11236 | | 2 |
| R102 | fxd comp 51K ohm $\pm 5\%$ 1/2 watt | 1 | EB5135 | AB | 01121 | 0686-5135 | |
| 104, 105 | fxd comp 680K ohm " 1 watt | 2 | GB6845 | AB | 01121 | 0689-6845 | |
| R106 | fxd comp 20K ohm " 1 watt | 1 | GB2035 | AB | 01121 | 0689-2035 | |
| R109 | fxd ww 500 ohm $\pm 0.1\%$ 2.5W @ 25°C. | 1 | Type P1 | Mepco | 80031 | | 2 |
| R110 | fxd ww 4.5K ohm $\pm 0.1\%$ 2.5W @ 25°C. | 1 | Type P1 | Mepco | 80031 | | 2 |
| R111 | fxd ww 45K ohm $\pm 0.1\%$ 10 W @25°C | 1 | Type P1000 | Mepco | 80031 | | 2 |
| R112, 113 | fxd ww 225K ohm $\pm 0.1\%$ 1.5 W | 2 | M55 | Mepco | 80031 | | 4 |
| R114 | fxd ww 5K ohm $\pm 0.1\%$ 2.5 W @25°C | 1 | Type P1 | Mepco | 80031 | | 2 |
| R115 | fxd ww 5010 ohm $\pm 0.1\%$ 1/4 watt | 1 | Type TX154 | PRC | 48615 | | 2 |
| R116 | fxd ww 1K ohm $\pm 0.1\%$ 2.5W @25°C | 1 | Type P1 | Mepco | 80013 | | 2 |
| R117 | fxd ww 100 ohm 0.1% 3.5W @ 25°C | 1 | Type P3 | Mepco | 80013 | | 2 |
| R118 | fxd ww 10 ohm $\pm 0.1\%$ 2.5W @25°C | 1 | Type P1 | Mepco | 80013 | | 2 |
| R119 | fxd ww 1 ohm $\pm 0.1\%$ 2.5W 4 lead | 1 | Type 24H68L8 | Gen Res | 05591 | | 2 |
| R120 | fxd ww 0.1 ohm $\pm 1\%$ 2.5 W 4 lead | 1 | Type 24H68L8 | Gen Res | 05591 | | 2 |
| R121 | fxd comp 5.1 meg ohm $\pm 5\%$ 1 watt | 1 | GB5155 | AB | 01121 | 0689-5155 | |
| R122 | fxd comp 510K ohm $\pm 5\%$ 2 watt | 1 | Type C42S | Corning | 16299 | | 2 |
| R123 | fxd ww 50K ohm $\pm 5\%$ 10 watt | 1 | Type 1A5544 | HH | 73978 | 0811-0955 | 2 |
| R124 | fxd ww 500 ohm $\pm 5\%$ 10 watt | 1 | Type 1A5544 | HH | 73978 | 0811-0952 | 2 |
| R125 | fxd ww 5 ohm $\pm 5\%$ 10 watt | 1 | Type 1A5544 | HH | 73978 | 0811-0950 | 2 |
| S1 | Function (on/off) 3 position switch | 1 | 6920-S1C | CRL | 71590 | | 2 |
| S2 | Range 10 position switch | 1 | 6920-S2B | CRL | 71590 | | 2 |

6-7
6920A

| Circuit Reference Number | Description | Quantity | Mfg. Part # or Type | Mfg. Code* | HP Part # | A | |
|-----------------------------|--------------------------------------|----------|------------------------|---------------|--------------|-----------|----|
| S3 | Output Switch Type LL Black | 1 | TIG M6A | Carling | 73559 | 2 | |
| T1 | Bias transformer | 1 | HT6920-1 | H-Lab | 09182 | 2 | |
| T2 | Coupling Transformer | 1 | HT6920-2 | H-Lab | 09182 | 2 | |
| T3 | Power Transformer | 1 | HT6920-3 | H-Lab | 09182 | 2 | |
| T4 | High Voltage Transformer | 1 | HT6920-4 | H-Lab | 09182 | 2 | |
| VR1 | Diode Zener 6.2Volt | 1 | 1N753A | Motorola | 04713 | 2 | |
| VR2 | Diode Zener 4.3Volt | 1 | 1N749 | Motorola | 04713 | 2 | |
| VR3 | Not Assigned | - | | | | | |
| VR4,6 | Diode Zener 6.2Volt | 2 | 1N821 | NA Elect | 06486 | 1902-0761 | 4 |
| VR5 | Diode Zener 6.2Volt | 1 | 1N825 | Transit. | 83877 | | 2 |
| VR7 | Diode Zener 14.7 Volt 10% 1.5 watt | 1 | ----- | Motorola | 04713 | 1902-0212 | 2 |
| VR8,9 | Thyrector | 2 | 20V P24B | GE | 03508 | | 4 |
| | Stand. Tilt Half Module | 1 | ---- | H-Lab | 09182 | 1490-0032 | 2 |
| | Hinge | 2 | ---- | H-Lab | 09182 | 5040-0700 | 4 |
| | Foot Assembly Half Module | 2 | A-5060- 0728-1 | H-Lab | 09182 | 5060-0728 | 4 |
| | Connector | 1 | H-0161-1G3L | Tower | 60437 | 1251-0148 | 2 |
| | Cord 18-3 SVT 7.5 feet | 1 | ---- | H-Lab | 09182 | 8120-0078 | 2 |
| | Male Plug PH151 Female Plug PH243 | | | | | | |
| | Fuse Block Solder Ter. | 1 | 4405 | Buss. | 71400 | | 2 |
| | Insulator Double | 2 | ---- | H-Lab | 09182 | 0340-0086 | 4 |
| | Nut Captive | 4 | C8020-632-4 | Tinnerm. | 89032 | 0590-0052 | 4 |
| | Assembly Binding Post (Black) | 1 | ----- | H-Lab | 09182 | 1510-0009 | 2 |
| | Assembly Binding Post (Red) | 1 | ----- | H-Lab | 09182 | 1510-0008 | 4 |
| | Knob 1/4 i.d. Insert Pointer (Black) | 2 | ----- | H-Lab | 09182 | 0370-0077 | 4 |
| | Transistor Socket | 5 | 3305 | Elco | 91662 | | 10 |
| | Mica washer | 4 | 734 | Reliance | 08530 | | 8 |

6920A
6-8

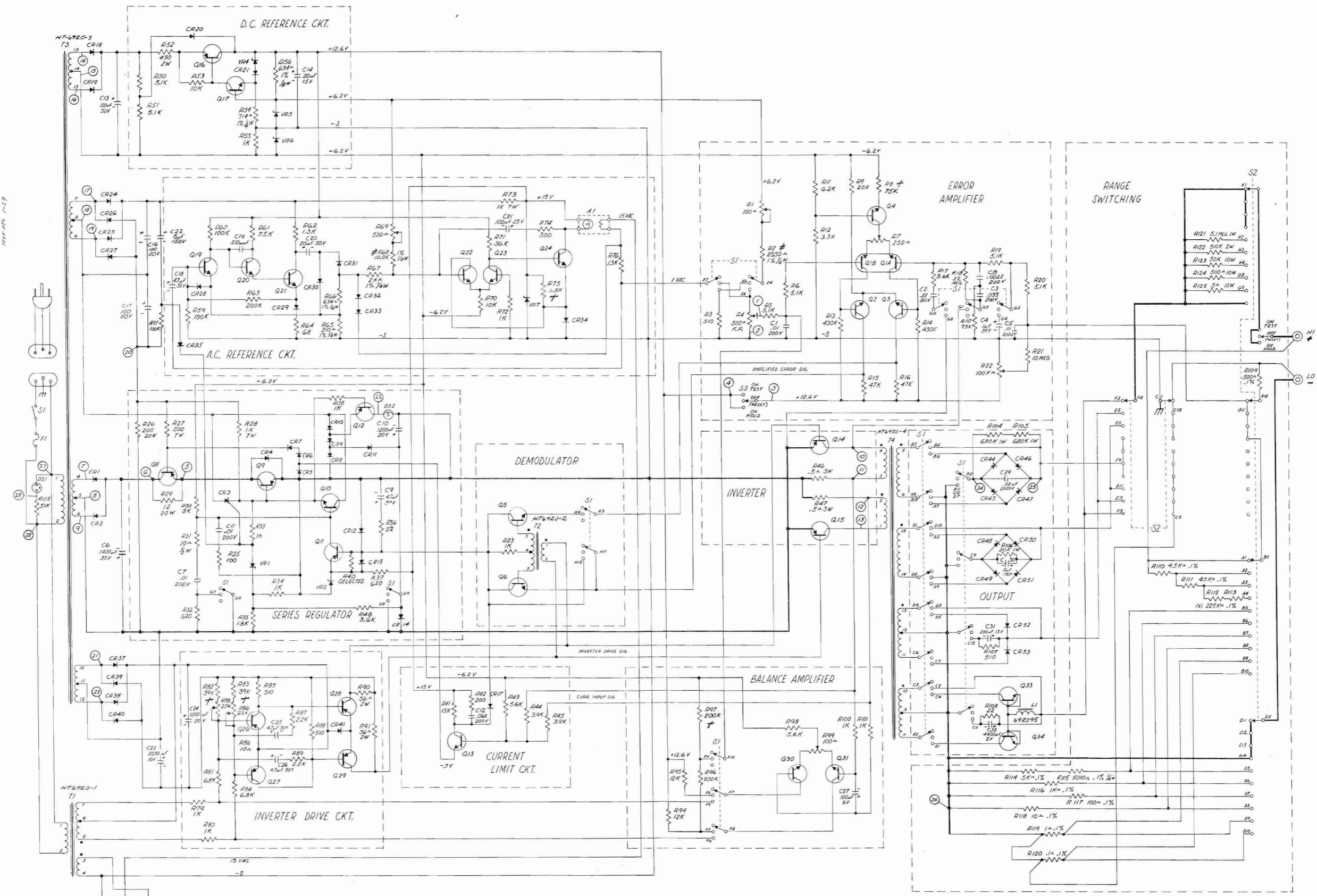
| Circuit Reference Number | Description | Quantity | Mfg. Part # or Type | Mfg. Mfg. | Mfg. Code* | HP Part # | A |
|-----------------------------|--|----------|------------------------|--------------|---------------|--------------|---|
| | Standoff Insulator | 3 | 17A1-A6 | Whitso | 92825 | | 6 |
| | Insulator | 8 | 100151-1 | H-Lab | 09182 | | 8 |
| | Insulator Transistor Pin. | 8 | 100146-1 | H-Lab | 09182 | | 8 |
| | Mirco Dial (Spl.-all white on black) wheels | 1 | Model 1309 Special | Borg | 96791 | | 2 |

① 5080-1920 Sewing Kit.

A = Recommended spares for one year for 10 units.

* = As listed in Federal Supply Code for Manufacturers H4-1.

TEST PNT 1-29



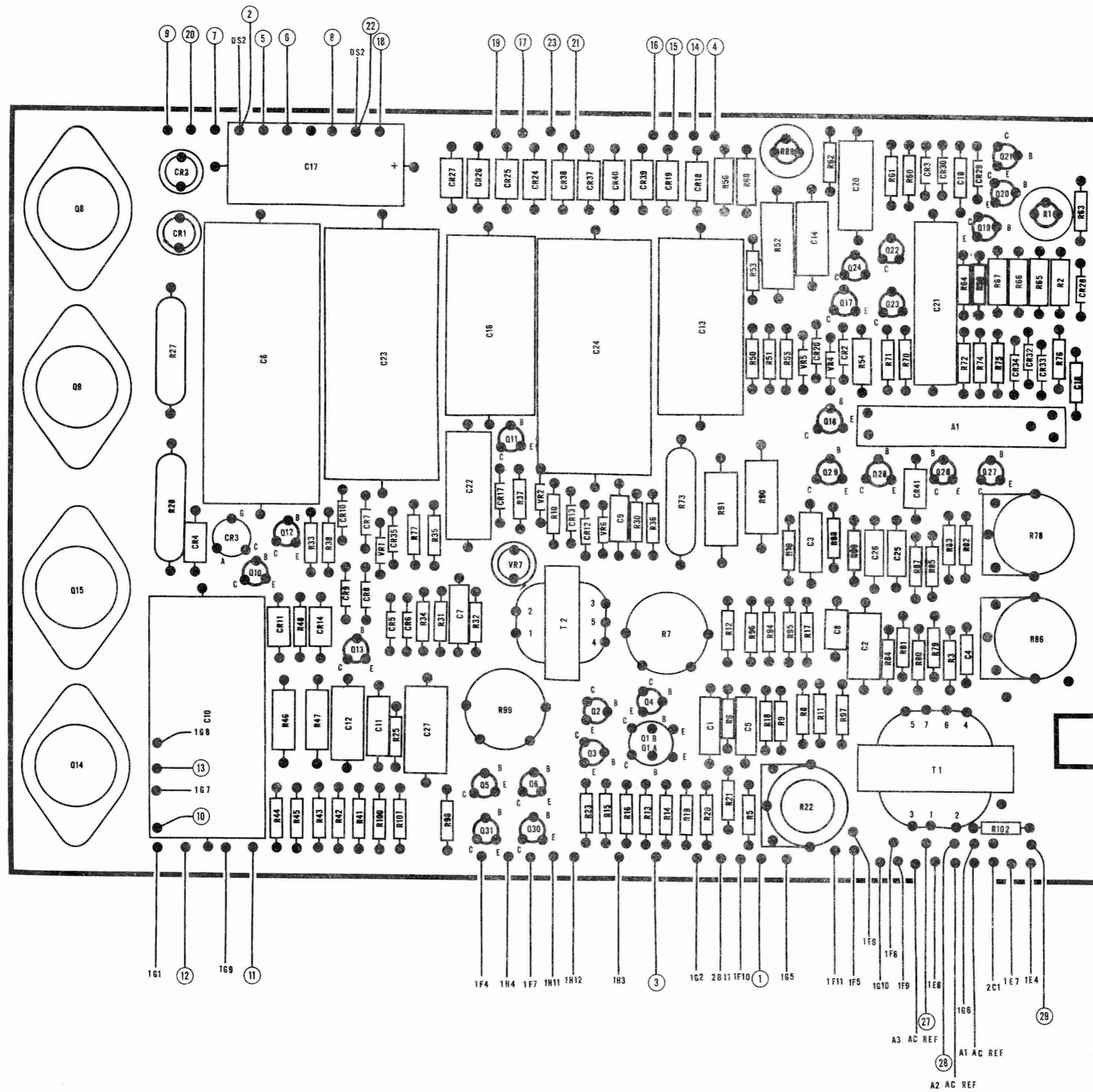
A1 A2 A3
EXTERNAL AC REFERENCE

PATENTS APPLIED FOR ON THIS CIRCUIT. LICENSE TO USE MUST BE OBTAINED IN WRITING FROM HARRISON LABORATORIES.

1. ALL RESISTORS ARE 1/2 W, 5% UNLESS OTHERWISE NOTED.
2. † DENOTES 1/2 W, 5% RESISTOR SELECTED FOR OPTIMUM PERFORMANCE.
3. # DENOTES 1/4 W, 1% W.W. RESISTOR THE VALUE OF WHICH IS SELECTED FOR OPTIMUM PERFORMANCE.

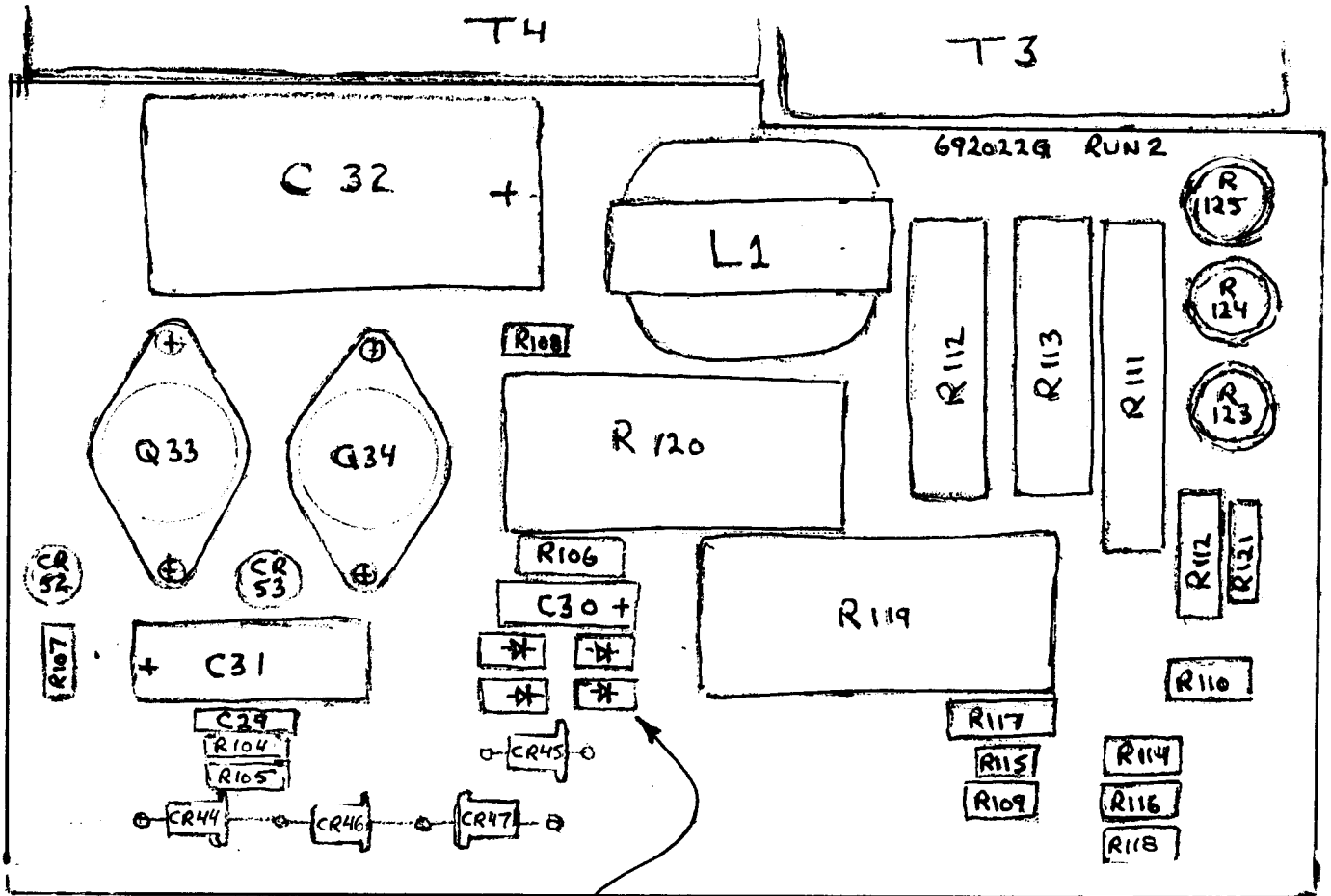
NOTES

1. CATHODES OF DIODES ALL FACING TOWARDS BOTTOM OF BOARD
2. POSITIVE SIDES OF ALL CAPACITORS FACING TOWARDS BOTTOM OF BOARD EXCEPT WHERE SHOWN
3. UPPER P.C. BOARD ALL SWITCH NO'S APPLY TO S1 EXCEPT 2B11 & 2C1



6920

TITLE
PC BOARD
COMPONENT LOCATIONS
FIG 2
DRAWN BY
692012
HARRISON LABORATORIES
DIVISION OF HEWLETT-PACKARD
BERKELEY HEIGHTS, N. J.



CR48, 49, 50 + 51
500mA 200PIV

LOWER CIRCUIT BOARD LAYOUT

HP/Harrison 6920B Meter Calibrator

sn 5K0246

Approx mfg date late 1965 per date codes

HP SALES AND SERVICE OFFICES IN THE U.S. AND CANADA

ALABAMA

Huntsville, 35801
Hewlett-Packard
Southern Sales Division
Holiday Office Ctr., Suite 18
(205) 881-4591
TWX: 510-579-2204

ARIZONA

Scottsdale, 85251
Hewlett-Packard
Neely Sales Division
3009 No. Scottsdale Rd.
(602) 945-7601
TWX: 602-949-0111

Tucson, 85716
Hewlett-Packard
Neely Sales Division
232 So. Tucson Blvd.
(602) 623-2564
TWX: 602-792-2759

CALIFORNIA

Los Angeles Area
Hewlett-Packard
Neely Sales Division
3939 Lankershim Blvd.
North Hollywood 91604
(213) 877-1282 and 766-3811
TWX: 910-499-2170

Sacramento, 95821
Hewlett-Packard
Neely Sales Division
2591 Carlsbad Ave.
(916) 482-1463
TWX: 916-444-8683

San Diego, 92106
Hewlett-Packard
Neely Sales Division
1055 Shafter Street
(714) 223-8103
TWX: 714-276-4263

San Francisco Area
Hewlett-Packard
Neely Sales Division
1101 Embarcadero Rd.
Palo Alto 94303
(415) 327-6500
TWX: 910-373-1280

COLORADO

Englewood, 80110
Hewlett-Packard
Neely Sales Division
7965 East Prentice
(303) 771-3455
TWX: 303-771-3056

CONNECTICUT

Middletown, 06458
Hewlett-Packard
Yewell Sales Division
589 Saybrook Rd.
(203) 346-6611
TWX: 710-428-2036

FLORIDA

Miami, 33125
Hewlett-Packard
Florida Sales Division
2907 Northwest 7th St.
(305) 635-6461

Orlando, 32803
Hewlett-Packard
Florida Sales Division
621 Commonwealth Ave.
(305) 425-5541
TWX: 305-275-1234

St. Petersburg, 33708
Hewlett-Packard
Florida Sales Division
410-150th Ave., Madeira Beach
(813) 391-0211
TWX: 813-391-0666

GEORGIA

Atlanta, 30305
Hewlett-Packard
Southern Sales Division
3110 Maple Drive, N. E.
(404) 233-1141
TWX: 810-751-3283

ILLINOIS

Chicago, 60645
Hewlett-Packard
Crossley Sales Division
2501 West Peterson Ave.
(312) 275-1600
TWX: 910-221-0277

INDIANA

Indianapolis, 46205
Hewlett-Packard
Crossley Sales Division
3919 Meadows Dr.
(317) 546-4891
TWX: 317-635-4300

KENTUCKY

Louisville, 40218
Hewlett-Packard
Southern Sales Division
Suite 4, 3411 Bardstown Rd.
(502) 459-4140
TWX: 810-535-3128

MARYLAND

Baltimore, 21207
Hewlett-Packard
Horman Sales Division
6660 Security Blvd.
(301) 944-5400

Washington, D. C. Area
Hewlett-Packard
Horman Sales Division
941 Rollins Avenue
Rockville 20852
(301) 427-7560
TWX: 710-828-9684

MASSACHUSETTS

Boston Area
Hewlett-Packard
Yewell Sales Division
Middlesex Turnpike
Burlington 01804
(617) 272-9000
TWX: 710-332-0382

MICHIGAN

Detroit, 48235
Hewlett-Packard
Crossley Sales Division
14425 West Eight Mile Road
(313) 342-5700
TWX: 313-342-0702

MINNESOTA

St. Paul, 55114
Hewlett-Packard
Crossley Sales Division
842 Raymond Avenue
(612) 646-7881
TWX: 910-563-3734

MISSOURI

Kansas City, 64131
Harris-Hanson Company
7916 Paseo Street
(816) 444-9494
TWX: 816-556-2423

St. Louis, 63144
Harris-Hanson Company
2814 South Brentwood Blvd.
(314) 647-4350
TWX: 314-962-3933

NEW JERSEY

Asbury Park Area
Hewlett-Packard
Robinson Sales Division
Shrewsbury
(201) 747-1060

Englewood, 07631

Hewlett-Packard
RMC Sales Division
391 Grand Avenue
(201) 567-3933

NEW MEXICO

Albuquerque, 87108
Hewlett-Packard
Neely Sales Division
6501 Lomas Blvd., N. E.
(505) 255-5586
TWX: 910-989-1665

Las Cruces, 88001
Hewlett-Packard
Neely Sales Division
114 S. Water Street
(505) 526-2486
TWX: 505-524-2671

NEW YORK

New York, 10021
Hewlett-Packard
RMC Sales Division
236 East 75th Street
(212) 879-2023
TWX: 710-581-4376

Rochester, 14625
Hewlett-Packard
Syracuse Sales Division
800 Linden Avenue
(716) 381-4120
TWX: 716-221-1514

Poughkeepsie, 12601
Hewlett-Packard
Syracuse Sales Division
82 Washington St.
(914) 454-7330
TWX: 914-452-7425

Syracuse, 13211
Hewlett-Packard
Syracuse Sales Division
5858 East Molloy Rd.
(315) 454-2486
TWX: 710-541-0482

NORTH CAROLINA

High Point, 27262
Hewlett-Packard
Southern Sales Division
1923 N. Main Street
(919) 882-6873
TWX: 510-926-1516

OHIO

Cleveland, 44129
Hewlett-Packard
Crossley Sales Division
5579 Pearl Road
(216) 884-9209
TWX: 216-888-0715

Dayton, 45409
Hewlett-Packard
Crossley Sales Division
1250 W. Dorothy Lane
(513) 299-3594
TWX: 513-944-0090

PENNSYLVANIA

Camp Hill
Hewlett-Packard
Robinson Sales Division
(717) 737-6791

Philadelphia Area
Hewlett-Packard
Robinson Sales Division
144 Elizabeth Street
West Conshohocken 19428
(215) 248-1600 and 828-6200
TWX: 215-828-3847

Pittsburgh Area

Hewlett-Packard
Crossley Sales Division
2545 Moss Side Blvd.
Monroeville 15146
(412) 271-5227
TWX: 710-797-3650

TEXAS

Dallas, 75209
Hewlett-Packard
Southwest Sales Division
P.O. Box 7166, 3605 Inwood Rd.
(214) 357-1881 and 332-6667
TWX: 910-861-4081

Houston, 77027
Hewlett-Packard
Southwest Sales Division
P.O. Box 22813, 4242 Richmond Ave.
(713) 667-2407
TWX: 713-571-1353

UTAH

Salt Lake City, 84115
Hewlett-Packard
Neely Sales Division
1482 Major St.
(801) 486-8166
TWX: 801-521-2604

VIRGINIA

Richmond, 23230
Hewlett-Packard
Southern Sales Division
2112 Spencer Road
(703) 282-5451
TWX: 710-956-0157

WASHINGTON

Seattle Area
Hewlett-Packard
Neely Sales Division
11656 N. E. 8th St.
Bellevue 98004
(206) 454-3971
TWX: 910-443-2303

CANADA

Montreal, Quebec
Hewlett-Packard (Canada) Ltd.
8270 Mayrand Street
(514) 735-2273
TWX: 610-421-3484

Ottawa, Ontario
Hewlett-Packard (Canada) Ltd.
1762 Carling Avenue
(613) 722-4223
TWX: 610-562-1952

Toronto, Ontario
Hewlett-Packard (Canada) Ltd.
1415 Lawrence Avenue West
(416) 249-9196
TWX: 610-492-2382

GOVERNMENT CONTRACTING OFFICES

Middletown, Pa. 17057
Hewlett-Packard
Contract Marketing Division
Olmsted Plaza
(717) 944-7401
TWX: 717-760-4816

West Conshohocken, Pa. 19428
Hewlett-Packard
Contract Marketing Division
144 Elizabeth St.
(215) 753-1811
TWX: 215-820-3847

HP INTERNATIONAL SALES AND SERVICE OFFICES

ARGENTINA

Mauricio A. Saurez
Telecomunicaciones
Carlos Calvo 224, Buenos Aires
Tel: 30-6312

AUSTRALIA

Sample Electronics (Vic.) Pty. Ltd.
9-11 Cremorne Street
Richmond E. 1, Victoria
Tel: 42-4757 (3 lines)

Sample Electronics (N.S.W.) Pty. Ltd.
4 Grose Street, Glebe, N.S.W.
Tel: 69-6338 (6 lines)

AUSTRIA

UNILABOR H.m.b.H.
Wissenschaftliche Instrumente
Rummelhardtgasse 6/3
P.O. Box 33, Vienna IX/71
Tel: 42 61 81

BELGIUM

Hewlett-Packard Benelux
20-24 Rue de l'Hopital, Brussels 1
Tel: 11.22.20

BRAZIL

CIENTAL IMPORTACAO E COMERCIO LTDA
R. Cons. Crispiniano, 69, 8.º Conj. 81
Sao Paulo, S.P.
Tel: 32-4332

CANADA

Hewlett-Packard (Canada) Ltd.
8270 Mayrand Street
Montreal, Quebec
(514) 735-2273

Hewlett-Packard (Canada) Ltd.
1762 Carling Avenue
Ottawa, Ontario
(613) 722-4223

Hewlett-Packard (Canada) Ltd.
1415 Lawrence Avenue W.
Toronto, Ontario
(416) 249-9196

CHILE

Hector Calcagni
Casilla 13942, Santiago
Tel: 6.42.26

DENMARK

Tage Olsen A/S
Rønnegade 1, Copenhagen Ø
Tel: 29.48.00

FINLAND

INTO O/Y
P. O. Box 153
11 Meritullinkatu, Helsinki
Tel: 6.11.33

FRANCE

Hewlett-Packard France
150 Blvd. Massena, Paris 13e
Tel: 707.97.19

GERMANY

Hewlett-Packard V.m.b.H.
Steindamm 35, Hamburg
Tel: 24.05.51

Hewlett-Packard V.m.b.H.
Kurfürstenstrasse 95
6 Frankfurt am Main
Tel: 52.00.36

Hewlett-Packard V.m.b.H.

Reginfriedstrasse 13
8 Munich 9
Tel: 49.51.21/22

Hewlett-Packard V.m.b.H.
Technisches Büro
Herrenbergerstrasse 110
703 Böblingen, Württemberg
Tel: 6971

GREECE

K. Karayannis
Klaffmonos Square, Athens 124
Tel: 230.301 (5 lines)

INDIA

The Scientific Instrument Company, Ld.
6, Tej Bahadur Sapru Road, Allahabad 1
Tel: 2451

The Scientific Instrument Company, Ld.
240, Dr. Dadabhai Naoroji Rd., Bombay 1
Tel: 26-2642

The Scientific Instrument Company, Ld.
11, Esplanade East, Calcutta 1
Tel: 23-4129

The Scientific Instrument Company, Ld.
30, Mount Road, Madras 2
Tel: 86339

The Scientific Instrument Company, Ld.
B-7, Ajmeri Gate Extn., New Delhi 1
Tel: 271053

IRAN

Telecom Ltd.
P. O. Box 1812, Tehran
Tel: 43850

ISRAEL

Electronics & Engineering Ltd.
16 Kremenetski St., Tel Aviv
Tel: 35021-2-3

ITALY

Hewlett-Packard Italiana S.p.A.
Viale Lunigiana 46, Milan
Tel: 69.15.84/5/6

Hewlett-Packard Italiana S.p.A.
Palazzo Italia
Piazza Marconi, 25, Roma-Eur
Tel: 59.12.544/5

JAPAN

Yokogawa-Hewlett-Packard Ltd.
2270 Ishikawa-cho
Hachioji, Tokyo
Tel: Hachioji 0426-3-1231 (19 lines)

Yokogawa-Hewlett-Packard Ltd.
No. 3, 6-chome, Aoyama-Kitamachi
Akasaka, Minato-ku, Tokyo
Tel: 403-0073, 403-0074, 403-0075

Yokogawa-Hewlett-Packard Ltd.
No. 8, Umeda, Kita-ku, Osaka City
Tel: 361-3084, 341-2095

Yokogawa-Hewlett-Packard Ltd.
No. 4, 3-chome, Himeikedoru,
Chigusa-ku, Nagoya City
Tel: 75-8545

KOREA

American Trading Company, Korea, Ltd.
112-35 Sokong-Dong, Jung-ku
Seoul P. O. Box 1103, Seoul
Tel: 3-7049, 3-7613

NETHERLANDS

Hewlett-Packard Benelux N.V.
23 Burg Roellstraat, Amsterdam W.
Tel: (020) 13.28.98 and 13.54.99

NEW ZEALAND

Sample Electronics (N. Z.) Ltd.
8 Matipo Street
Onehunga S. E. 5, Auckland
Tel: 565-361

NORWAY

Morgenstjerne & Co. A/S
Ingeniørfirma
6 Wessels Gate, Oslo
Tel: 20 16 35

PORTUGAL

TELECTRA
Rua Rodrigo da Fonseca 103
P. O. Box 2531, Lisbon 1
Tel: 68 60 72 and 68 60 73 and 68 60 74

PUERTO RICO & VIRGIN ISLANDS

San Juan Electronics, Inc.
150 Ponce de Leon, Stop 3
P. O. Box 5167
Pta. de Tierra Sta., San Juan 00906
Tel: 722-3342, 724-4406

SPAIN

ATAIO, Ingenieros
Enrique Larreta 12, Madrid 6
Tel: 235.43.44 and 235.43.45

SOUTH AFRICA

F. H. Flianter & Co. (Pty.), Ltd.
Rosella House
Buitencingle Street, Cape Town
Tel: 3-3817

SWEDEN

H-P Instrument AB
Centralvägen 28, Solna, Centrum
Tel: 08-83.08.30 and 10-83.08.30

SWITZERLAND

Max Paul Frey
Wankdorffeldstrasse 66, Berne
Tel: (031) 42.00.78

TAIWAN (FORMOSA)

Hwa Sheng Electronic Co., Ltd.
21 Nanking West Road, Taipei
Tel: 4 6076, 4 5936

TURKEY

TELEKOM Engineering Bureau
P.O. Box 376—Galata, Istanbul
Tel: 49.40.40

UNITED KINGDOM

Hewlett-Packard Ltd.
Dallas Rd., Bedford, England
Tel: Bedford 68052

VENEZUELA

Citec, C. A.
Edif. Arisañ-Of #4
Avda. Francisco de Miranda-Chacaito
Apartado del Este 10.837, Caracas
Tel: 71.88.05

YUGOSLAVIA

Belram S.A.
83 Avenue des Mimosas
Brussels 15, Belgium
Tel: 35.29.58

For Sales and Service Assistance in Areas Not Listed Contact:

IN EUROPE

Hewlett-Packard, S. A.
54 Route des Acacias
Geneva, Switzerland
Telephone: (022) 42.81.50
Telex: 2.24.86
Cable: HEWPACKSA

IN LATIN AMERICA

Hewlett-Packard Inter-Americas
1501 Page Mill Road
Palo Alto, California 94304, U.S.A.
Telephone: (415) 326-7000
TWX: 910-373-1267
Telex: 033811 Cable: HEWPACK

ELSEWHERE

Hewlett-Packard
International Marketing Department
1501 Page Mill Road
Palo Alto, California 94304, U.S.A.
Telephone: (415) 326-7000
TWX: 910-373-1267
Telex: 033811 Cable: HEWPACK



The information contained in this booklet is intended for the operation and maintenance of Harrison equipment and is not to be reproduced without written consent of:

Harrison Division of Hewlett-Packard Company

PATENT NOTICE

Patents have been applied for on circuits used in this power supply. Buyer is not licensed to reproduce drawings or to utilize the circuit without written permission from Harrison Division of Hewlett-Packard Company.

CLAIM FOR DAMAGE IN SHIPMENT

This equipment should be tested as soon as it is received. If it fails to operate properly or is damaged in any way, a claim should be filed with the carrier. A full report of the damage should be obtained by the claim agent, and this report should be forwarded to us. We will then advise you of the disposition which is to be made of the equipment and arrange for repair or replacement.

HARRISON DIVISION OF HEWLETT-PACKARD COMPANY

100 LOCUST AVENUE • BERKELEY HEIGHTS, NEW JERSEY 07922 • 464-1234 • AREA CODE 201 • TWX 201-464-2117

HEWLETT
PACKARD  HARRISON
DIVISION