

# HP Professional

JULY 1994

- TRAVELING BANDWIDTHS
- MEMORY LANES
- STRATEGIC DIRECTIONS: INSIGNIA SOLUTIONS AND SCH

# Internetworking

MIS Gears Up  
For Convergence

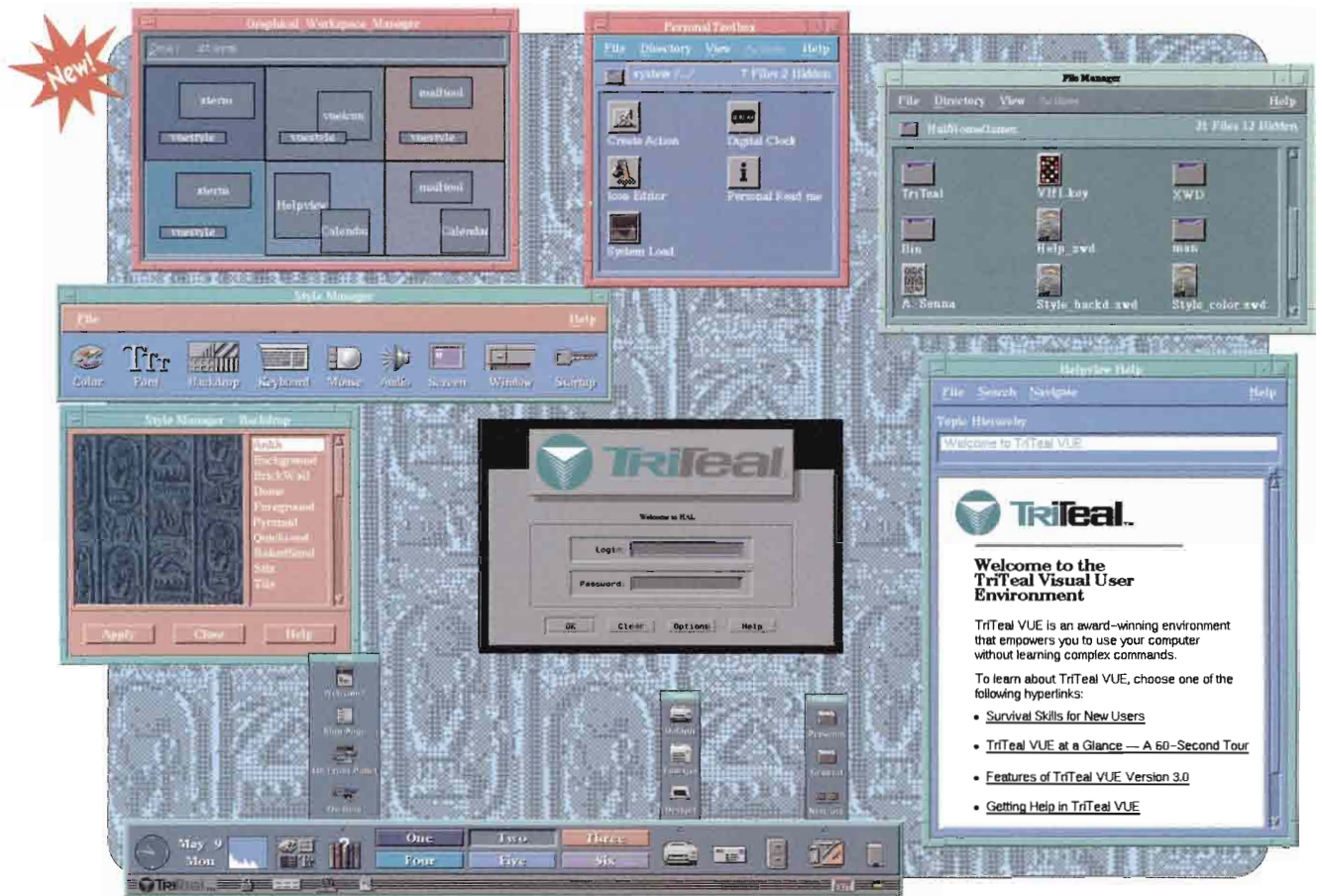


INsites:

ST. LAWRENCE SEAWAY ON  
COURSE WITH WILCO AMS



# The COSE Common Desktop Environment IS coming! So why wait? Get it NOW!



CDE 1.0 should be available from the major platform vendors *sometime* within the next 12 months.

But you can realize all of the benefits of a Common Desktop Environment today with TriTeal VUE 3.0.

Based on Hewlett-Packard's Visual User Environment (VUE) which is the nucleus of the COSE CDE effort, TriTeal VUE offers the following benefits:

- ▲ **Login Manager** provides an easy and secure way to log in to your workstation without any knowledge.
- ▲ **Session Manager** preserves your workspace context between sessions and automatically restores all aspects of the environment upon reentry.
- ▲ **Workspace Manager** provides a "Virtual Desktop" to help manage multiple projects and activities simultaneously. Users can organize their desktop into different workspaces for different tasks.
- ▲ **Style Manager** customizes your environment at the click of a button. Menus, slider bars, and buttons allow you to dynamically select colors, background patterns, and fonts.

- ▲ **File Manager** uses icons and drag-and-drop style manipulation to organize your application and datafiles.
- ▲ **Help Manager** offers a context sensitive, hypertext help at the click of a button, from any point and any level within the TriTeal VUE environment.

**Graphical Workspace Manager (GWM)** visually monitors and navigates through multiple desktops simultaneously. Application icons representing programs running within a given workspace can be dragged into any other workspace.

TriTeal VUE is available now for SunOS, Solaris™ and AIX based platforms, exclusively from Artecon and Artecon's strategic partners - SunExpress, Sun Federal, Merisel, GTSI, and Access Graphics.

And at only \$350 for a single copy license\*, why wait any longer? Join the thousands of users who are enjoying all of the benefits of CDE today with TriTeal VUE.

\*Call for multiple seat RTU pricing.

**1-800-USA-ARTE**  
1-800-872-2783

Enterprising solutions for your enterprise.™

**Artecon**

PO Box 9000, Carlsbad, CA 92018-9000  
(619)931-5500 FAX (619) 931-5527  
email: sales@artecon.com  
A Member of the Nordic Group of Companies

CIRCLE 242 ON READER CARD

Artecon Canada, Inc. (416) 487-7701 ▲ Nihon Artecon, Ltd. 81-3-3280-1210 ▲ Artecon, S.A. 33-1-69-1818-50

Artecon and the Artecon logo are registered trademarks of Artecon, Inc. All other trademarks are proprietary to their respective manufacturers.

"Visual User Environment" and "VUE" are trademarks of Hewlett-Packard Company used under license.

# IEM'S UNATTENDED BACKUP LETS YOU ATTEND TO WHATEVER YOU PLEASE



**With IEM's unattended backup hardware and software solutions, you can work to live, not live to work.** Alexandria, IEM's UNIX-based backup and archive librarian, manages your heterogeneous UNIX network backup from start to finish. Our full line of hardware solutions includes 4mm and 8mm autoseeders and carousels and 3480 technology. So get a life, with IEM's high-speed, high-capacity backup solutions.



IEM provides total backup solutions including stand alone units, jukeboxes and software for your HP 3000 and 9000 systems. For more information, please call us at one of the numbers listed below.

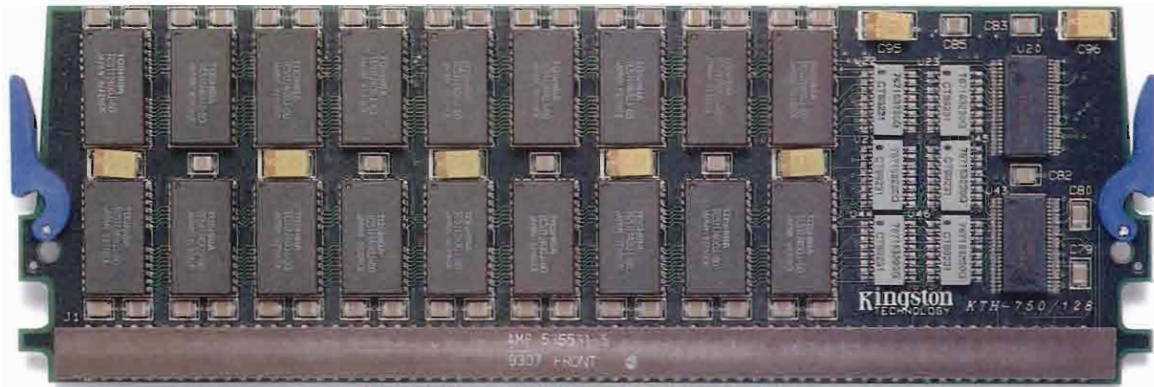


In the U.S. and Canada  
IEM, Inc., P.O. Box 1889  
Fort Collins, CO 80522 USA  
Phone: +[1] 303-221-3005  
[1] 800-321-4671  
Fax: +[1] 303-221-1909

In the United Kingdom:  
IEM Europe, Ltd., Colorado House,  
Cromwell Park, Banbury Road  
Chipping Norton, Oxfordshire OX7 5SR  
Phone: +[44] 608 645000  
Fax: +[44] 608 645155

All others:  
IEM International Sales  
1629 Blue Spruce Drive  
Fort Collins, CO 80524 USA  
Phone: +[1] 303-221-3005  
Fax: +[1] 303-221-1909





**Now Shipping!**  
 HP/Apollo Series 9000 Model 750, 755 Memory

K7H 750/128  
 32, 64, 128MB

# The HP Memory To Remember



Hewlett-Packard Memory Enhancements  
 Kingston's HP and HP/Apollo memory enhancements lead the industry in competitive pricing, reliability, compatibility, selection and availability. Our workstation memory is backed by a lifetime warranty and free, comprehensive technical support. With Kingston HP and HP/Apollo compatible memory upgrades, you may spend less, but you truly get more.

## Guaranteed Compatibility

As a Hewlett-Packard Channel Partner, we guarantee absolute compatibility of our memory upgrades with HP and HP/Apollo systems. We test every memory upgrade with HP's own system diagnostics and operating system.



Our memory upgrades are so compatible that Hewlett-Packard itself is a regular customer!

HP/Apollo Memory	
HP 3000 Business Systems 9X7 Series	16MB, 32MB and 64MB kits
HP/Apollo 9000 400 Series	4MB, 8MB, 16MB and 32MB kits
HP/Apollo 9000 700/RXstations	1MB, 2MB, 4MB and 8MB modules
HP/Apollo 9000 700 Series	8MB, 16MB, 32MB, 64MB and 128MB kits
HP 9000 Business Servers 8X7 Series	16MB, 32MB, 64MB and 128MB kits

Kingston has a full line of memory and storage upgrades for most popular HP and HP/Apollo workstations. With new products being announced every week at Kingston, give us a call for our latest offerings.

## Kingston Storage Products

Having built our business around high quality computer memory, we've gone the next step and developed a solid family of storage products. Whether you need internal or external, fixed or removable storage solutions, Kingston has the reliable products for your system.



## For More Information

Call our workstation memory experts at  
**(800) 835-2545** or  
**(516) 673-6300** (East coast office). We'll be happy to answer any questions you have about our memory upgrades for Hewlett-Packard, Data General, Digital Equipment, IBM, NeXT, Silicon Graphics, Solbourne, Sun and other popular workstation manufacturers.



## Kingston Makes Memory For Workstations From These Manufacturers:

- HP
- Data General
- Digital Equipment
- Sun
- NCD
- IBM
- NeXT
- Silicon Graphics
- Solbourne
- Tektronix



THE INSIDE NAME IN UPGRADES

17600 Newhope Street, Fountain Valley, California 92708 (800) 835-2545 (714) 435-2667 Fax (714) 435-2618

CIRCLE 281 ON READER CARD

# Contents

July 1994

Vol. 8, No. 7

## Remote Possibilities

By George A. Thompson

28

*Part two of a two-part series on mobile computing, looks at the various kinds of wireless technologies available for professionals on the move.*

## What's All The Hub-Bub, Bub

By Bill Sharp

36

*Today, the need for information exchange goes over office partitions, through building walls and across international borders. Internetworking guarantees no LAN remains an isLANd.*

## Nothing More Than Memory

By Lynn Haber

44

*Glamorous? Hardly. Necessary? Always. Memory remains a key decision for system purchases and upgrades. What's available today and what's the cost?*

### COLUMNS

#### UNIX: ODBC: Not Just For Windows

By Miles B. Kehoe

Microsoft's Open Database Connectivity Standard Is More Than Just Window Dressing. .... 48

#### Managing Your HP 3000: The Year Of The OS At HP

By John P. Burke

Major Upgrades Of MPE/V And MPE/iX Hit The Streets For HP 3000 Users. .... 52

#### And Another Thing: Think Again Comrade

By Gordon McLachlan

The Laws Of Supply And Demand Should Be Followed By IS. .... 72

Editorial ..... 7

Letters To The Editor ..... 14

Industry Watch ..... 8

INsites ..... 24

New Products ..... 54

Reader Information ..... 65

Product Showcase ..... 68

Career Opportunities ..... 70

Advertiser Index ..... 71

### PRODUCT WATCH:

Graphic Data Systems  
Corp.'s GDS ..... 16

Trinzic Corp.'s InfoPump ... 18

### STRATEGIC DIRECTIONS:

Software Clearing  
House Inc. .... 20

Insigna Solutions Inc. .... 22



Cover Photo by The Image Bank

# Tired of paying high prices for your terminal emulation needs?

## THE ALTERNATIVE

MiniSoft presents MS92—the ALTERNATIVE—a low cost HP700/92 and VT320 terminal emulation package with integrated TCPIP, Telnet and NS/VT. In addition MS92 includes such advanced features as multiple sessions, keyboard remapping, Windows sockets and DDE support.

MS92 also features a powerful application programming module for designing new user interfaces to integrate Windows and minicomputer based applications. These tools are built-in to facilitate your move to a client server environment and provide support for Visual Basic and C/C++.

MiniSoft's terminal emulators are the ALTERNATIVE for DOS, Windows and Macintosh platforms and are priced from just \$99.00. Call 800/682-0200 today to order your copy.

# MINISOFT



MiniSoft Inc.  
312 Maple Avenue  
Snohomish WA 98290  
FAX 206/568-2923  
800/682-0200

Banhofstrasse 46  
CH-6048, Horw  
Switzerland  
+41/41.47.2320  
FAX +41/41.47.3866

MiniSoft 92 is a registered trademark of MiniSoft Inc. All other trademarks are the property of their respective owners.

CIRCLE 472 ON READER CARD

UNIX is a registered trademark of AT&T in the U.S.A. and in other countries.

MS-DOS is a trademark of Microsoft Corp.

Macintosh is a trademark of Apple Computer Inc.

X Window System is a trademark of MIT.

Windows is a registered trademark of Microsoft Corp.

Windows NT is a registered trademark of Microsoft Corp.

NetWare is a registered trademark of Novell Inc.

## HP Professional

**EDITOR-IN-CHIEF** Charlie Simpson  
**TECHNICAL EDITOR** George A. Thompson  
**ASSISTANT EDITOR** Deborah Schwartz

**TECHNICAL EDITOR** Bill Sharp  
**APOLLO EDITOR** Fred Mallett  
**HP 3000 EDITOR** John P. Burke  
**NETWORKING EDITOR** Tim Cahoon  
**PC/UNIX EDITOR** Miles B. Kehoe  
**SOFTWARE ENGINEERING EDITOR** Richard Riehle  
**CONTRIBUTING EDITOR** Gordon McLachlan  
**CONTRIBUTORS** Sam Dickey, Lynn Haber  
**EXECUTIVE CONSULTANT** Carl B. Marbach

### TECHNICAL SERVICES

**DIRECTOR OF TECHNICAL SERVICES** David B. Miller

### DESIGN & PRODUCTION

**EXECUTIVE DESIGN DIRECTOR** Leslie A. Caruso  
**ART DIRECTOR** Al Feuerstein  
**ASSOCIATE ART DIRECTOR** Jennifer Barlow  
**DESIGNER** Patty Wall  
**PRODUCTION MANAGER** Bill Hallman

### CIRCULATION

**CIRCULATION MANAGER** Ron Langmacher  
**DIRECTOR OF FULFILLMENT** Marjorie Pitrone  
**CIRCULATION CONSULTANT** Carrie Eisenhandler  
**CIRCULATION COORDINATOR** Bonnie Fetzer

### MARKETING

**PROMOTIONS DIRECTOR** Timothy M. Kraft  
**MARKETING MANAGER** Gloria Goodwin  
**SENIOR GRAPHIC DESIGNER** Thomas Owen  
**GRAPHIC DESIGNER** Mark Broomell

**PUBLISHER** Leslie Ringe

### CARDINAL BUSINESS MEDIA, INC.

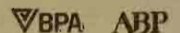
**PRESIDENT AND CHIEF EXECUTIVE OFFICER:**  
*Robert N. Boucher*  
**VICE PRESIDENT & CHIEF OPERATING OFFICER**  
*James S. Pover*  
**VICE PRESIDENT & CHIEF FINANCIAL OFFICER**  
*Thomas C. Breslin*  
**VICE PRESIDENT, PUBLISHING SERVICES**  
*R. Patricia Herron*  
**DIRECTOR OF HUMAN RESOURCES** *Carolyn J. Head*  
**CONTROLLER** *Andrew D. Landis*

For more information on how to contact your sales representative, see page 71. For address changes please call (708) 564-1385 or FAX (708) 564-9002. For all other subscription information call (215) 957-4269. Editorial, advertising sales and executive offices at 1300 Virginia Dr., Ste. 400, Fort Washington, PA 19034 ■ (215) 643-8000 Corporate FAX (215) 643-8099. To reach staff listed on masthead via UUNET, send MAIL to: LASTNAME@CARDINAL.COM

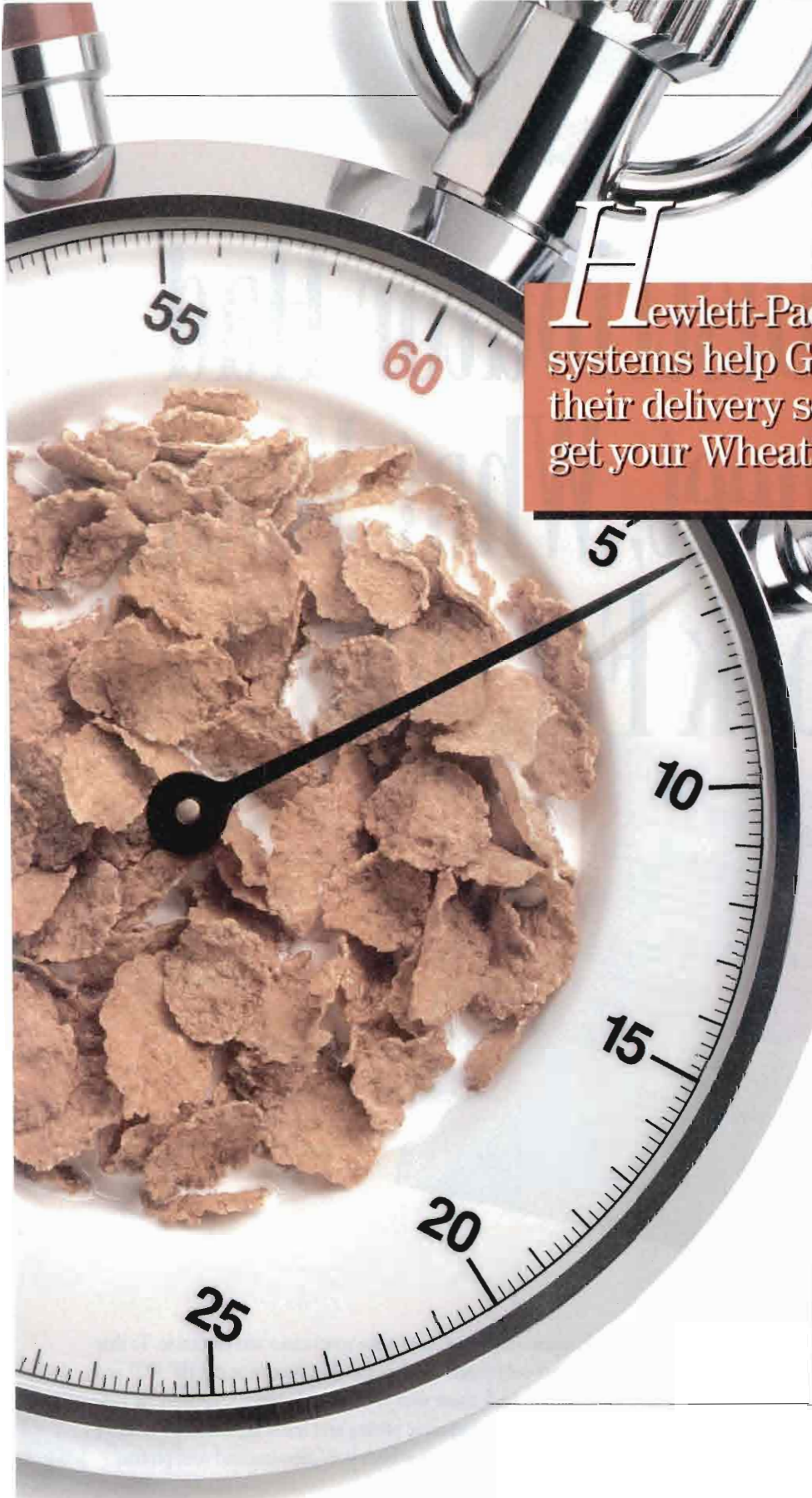
HP PROFESSIONAL ISSN 0896-145X is published monthly by Cardinal Business Media Inc., 1300 Virginia Dr., Ste. 400, Fort Washington, PA 19034. Subscriptions are complimentary for qualified U.S. and Canadian sites. For reprints, contact Reprint Management Services, 505 E. Airport Rd., Lancaster, PA 17601; (717) 560-2001, Fax (717) 560-2023. Second Class postage paid at Horsham, PA 19044, and additional mailing offices. POSTMASTER: Send all correspondence and address changes to HP PROFESSIONAL P.O. Box 3052, Northbrook, IL 60062. COPYRIGHT © 1993 by Cardinal Business Media Inc. All rights reserved. No part of this publication may be reproduced in any form without written permission from the publisher. All submitted manuscripts, photographs and/or artwork are sent to Cardinal Business Media, Inc. at the sole risk of the sender. Neither Cardinal Business Media, Inc. nor HP PROFESSIONAL magazine is responsible for any loss or damage. HP PROFESSIONAL is an independent journal not affiliated with Hewlett-Packard Company. HP and Hewlett-Packard are registered trademarks and HP PROFESSIONAL is a trademark of Hewlett-Packard Company.

Canada Post International Publication Mail (Canadian Distribution Sales Agreement # IPM0264431)

Printed in U.S.A.







**H**ewlett-Packard computer systems help General Mills crunch their delivery schedules. So you get your Wheaties even fresher.

*"Not only is the HP 3000 open, but it's an excellent, easy-to-use transaction-processing system for business-critical operations."*

— Mike Meinz,  
General Mills, Information Systems

**T**he demand for Wheaties®, Cheerios® and other General Mills' products is huge. Which puts enormous demands on the company's distribution and inventory control systems.

They needed a way to deliver faster, while making sure each shipment was complete and contained only the freshest products. They solved the problem crisply by porting a UNIX®-based warehouse management application to HP 3000 computers.

This is helping General Mills perform like a champion. The HP 3000s, located in all nine distribution centers, are managed remotely, without extra staff. And they provide near 100% uptime. Which takes the worry out of running critical applications.

If you need a faster way to market, call 1-800-637-7740, Ext. 7806 for a video case study. We think it will whet your appetite for more.



 **HEWLETT  
PACKARD**



# If Your Distributor Had A Data Sheet, What Would You Look For On It?

The right solutions start with the right systems. We're a leading distributor of the HP 3000, HP 9000 and HP PCs.

Consultation, technical support and rapid turnaround in everything from quotes to product delivery.

The applications and tools needed to turn advanced technology into real-world customer solutions.

Client Systems

PERFORMANCE

RELIABILITY

IMPLEMENTATION

COMPATIBILITY

OVERHEAD

We've worked on your behalf to build strong strategic relationships — with companies like Hewlett-Packard, Oracle and Edify.

The pricing, financing, warehousing and integration that improve both your service and profits.

At Client Systems, you can count on us to help turn advanced technology into real-world business solutions. We're here for one reason — to support the VARs, Integrators and Reengineering Consultants committed to delivering the advantages of high-value systems and a full spectrum of proven client-server software and tools.

Our business, simply put, is to make yours easier and profitable. To that end, we not only provide such world-class systems as the HP 3000 and HP 9000, we back them with the full-scale service, networking support, consultation, aggressive pricing and financing necessary to make sure you close deals and keep both your promises and your profits.



## Client Systems

Working For Your Advantage

6061 South Willow Drive, Suite 100 ▲ Englewood, Colorado 80111 ▲ 303.779.4301

CIRCLE 479 ON READER CARD



# Takin' Care Of Business

In Today's World Of Hype, No News Is Truly Good News

A friend, and even bigger cynic than myself, once told me that nothing monumental has happened in the computer industry in the last year. Not only that, but nothing would happen in the computer industry for the next two to three years. No breakthroughs, no revolutions, no coveted paradigms — in other words no news.

This theory was shared with me, on the train on my way to what promised to be *the* event of last year — the COSE API announcement. I'm sure you remember that I poo-pooed that announcement a year ago. And now, I'm getting ready to poo-poo the industry. Nothing's happening. At least nothing big.

Last month, HP piqued my curiosity when they jubilantly called me early that humid morning to tell me that HP and Intel were unveiling a "BIG announcement." So at lunchtime (with hoagie in hand), I dialed in, hoping to find something to write about. Aaaaaaaaint ... Sorry sir, you reached the COSE rerun.

The announcement wasn't an announcement at all. It was merely a friendly little chat about the "direction" the two firms were taking. No products, no plans, no pieces of information about who is doing what. It seems HP and Intel were thinking of becoming buds, while still remaining competitors.

So now what do I write about? I racked my brain, and a few of those around me, for a BIG topic and found none.

Then I realized that all the action in the computer industry was in the LITTLE, not the BIG things. Now, this is what I've been waiting for: Vendors and developers finally believe that there now exists enough high tech to keep some engineers, designers and implementors busy, at least for a little while, improving and actually finding practical uses for existing computer technologies.

Applications that help make day-to-day living easier, educational and interesting. I'm ecstatic.

For example, engineers at a small firm in Hackensack, N.J. called International Discount Telecommunications are providing access to E-mail for blind and dyslexic individuals. And, in Warminster, Pa. another small firm is delivering the Internet to those who don't even have access to, let alone own, a computer.

And although I'm personally sick of the phrase "Information Superhighway," I'm happy to see it appearing in the mainstream media, from medical journals to my local newspaper, describing applications everyone can take advantage of, in terms that everyone can understand and appreciate.

So no complaints here. Keep up the good work. Or as the saying goes, take care of the little things, and the big things will take care of themselves.



By Charlie Simpson

*Charlie Simpson*

# Three From HP

**R**ecently HP has returned to a market it once

ruled — embedded systems. Offering a stripped down version of your computer that another vendor can stuff into their product was a natural for HP during the heyday of the HP 1000 and some of the smaller technical computers. When HP's growing computer business was lured toward larger commercial markets over the past eight years, other vendors took over most of HP's market share in embedded systems.

Kevin Spooner, HP's program manager for embedded board systems, says HP has been slowly gaining momentum in this market over the past three years. "Now, we're growing faster than the rest of the market. We're back in the top 10 embedded systems vendors," he says.

The reason for the change in fortunes lately is last month's announcement of the HP 9000 Model 743, a full-function HP PA-RISC workstation, including graphics on a single board. This is a VMEbus, single-board computer (SBC) with full workstation functionality for \$4,355. The SBC includes VME64, mezzanine-card and graphics expansion capabilities.

This HP 9000 Series 700 workstation version is designed for systems integrators and original equipment manufacturers

(OEMs) providing data-acquisition and real-time, turn-key systems for the aerospace/defense, manufacturing, telecommunications and research/medical industries. The system is available with a ruggedized enclosure.

Separate versions support the HP-UX Version 9.05 flavor of UNIX or the HP-RT real time operating systems. The HP-UX version is binary compatible with the HP 9000 Series 700 workstation products. A 64 MHz version of the board delivers 67 SPECint92 and 99 SPECfp92, while the 100 MHz version delivers 101 SPECint92 and 139 SPECfp92. HP claims the board system delivers 30 percent to 40 percent better performance than its nearest price/performance competitor, Digital's AXPVME 160 SBC.

The HP 9000 Model 743i base price is \$4,355. With 16 MB RAM and a 15-inch color monitor, price is \$7,254; and with 32 MB RAM and a 20-inch color monitor, price is \$18,325. HP-UX versions are available immediately. HP-RT versions will be available in the second half of 1994, according to HP.

## A NEW VERSION OF ALLBASE/SQL RDBMS

HP improved its successful relational database product, ALLBASE/SQL with the introduction of version G.0, adding application portability, faster database recovery and 24-hour support worldwide.

HP's successful database product has done well of late by bucking the trend of the rest of the industry. With several quality vendors marketing relational databases that will run on several different



## HP Series

	MB	1	2	4	8	12	16	32	64	128	256
HP-200/310/320		●	●	●	●						
HP-319				●	●						
HP-330/350/370			●		●						
HP-332			●								
HP-340			●								
HP-345/375/380			●	●		●	●				
HP-360			●	●	●	●					
HP-362		●	●	●							
HP-382			●	●	●	●					
HP-400/425/433			●	●		●	●				
HP-425E			●	●							
HP-700RX	●	●	●	●							
HP-705/710				●		●	●				
HP-715/725			●	●		●	●	●			
HP-720/730/735						●	●	●	●		
HP-742/745/747			●	●		●	●	●	●	●	
HP-750/755						●	●	●	●	●	●
HP-8X7/9X7						●	●	●	●	●	●
HP-FXX/GXX/HXX/IXX						●	●	●	●	●	●

# PICK A CARD.

**Any card.** The memory you need is in stock, tested and ready to go. Order today. Upgrade your system tomorrow.

You'll get the quality and service you expect from the leader in HP workstation enhancements. We specialize in HP, it's the platform we know best.

Newport Digital TURBO cards and memory products are guaranteed to meet or beat HP quality standards. Every card we ship has been rigorously tested in a fully functional workstation, just like yours.

**Risk free.** Our total quality program gives us the confidence to offer an unconditional lifetime warranty. If one of our products fails, we'll ship a replacement by overnight express. We'll do anything we can to keep your workstation working.

**Call Today.** Speak with an expert on Hewlett-Packard computers. We'll make sure you get the cards you need.

Evaluate any of our memory products for 30 days. If you're not completely satisfied, return it without obligation.

**NEWPORT DIGITAL**  
**1-800-383-3642**

CIRCLE 246 ON READER CARD

## IEEE 488.2 for Your HP Series 700 Workstation



### Low-Cost EISA Plug-In Board for HP Series 700 Models 715, 725, and above

- Highest performance
  - More than 1.3 Mbytes/s (IEEE 488.1)
  - More than 5.5 Mbytes/s (HS488)

### External Ethernet Controller for All Models (including 712)

- Uses built-in Ethernet port – no slot required
- Share GPIB peripherals among several workstations

Both hardware products include industry-standard NI-488.2M™ software for guaranteed software portability to future platforms.



Call for your **FREE**  
**GPIB brochure**  
**(800) 433-3488**  
**(U.S. and Canada)**



6504 Bridge Point Parkway  
Austin, TX 78730-5039  
Tel: (512) 794-0100  
95 (800) 010 0793 (Mexico)  
Fax: (512) 794-8411

#### Branch Offices:

Australia 03 879 9422 • Austria 0662 435986  
Belgium 02 757 00 20 • Canada 519 622 9310 • Denmark 45 76 26 00  
Finland 90 527 2321 • France 1 48 14 24 24 • Germany 089 741 31 30  
Italy 02 48301892 • Japan 03 3788 1921 • Netherlands 03480 33466  
Norway 32 848400 • Spain 91 640 0085 • Sweden 08 730 49 70  
Switzerland 056 20 51 51 • U.K. 0635 523545

© Copyright 1994 National Instruments Corporation. All rights reserved. Product and company names listed are trademarks or trade names of their respective companies.

CIRCLE 244 ON READER CARD

## ALLBASE/SQL now boasts a five-year cost of ownership that is 50 percent to 80 percent below those of competing RDBMS solutions.

products, HP chose instead to run its product only on HP gear, and tune the software for peak performance and low cost of ownership.

The result is that ALLBASE/SQL now boasts a five-year cost of ownership that is 50 percent to 80 percent below those of competing RDBMS solutions. And with the hottest computer lineup in the industry right now, HP doesn't seem to be having trouble getting people to opt for its hardware.

Not wanting to sit around gloating, HP is polishing up its products to garner more converts and make existing users happier. Version G.0 provides support for Microsoft's ODBC API to allow users to develop database-independent client-server applications. The API also allows ALLBASE/SQL users to use Windows-based products to integrate data with other ODBC-compliant databases. HP had previously bundled the Gupta API with ALLBASE; now the product includes both APIs at no additional cost.

ALLBASE now includes BLOB support and by fall will support Progress' 4GL. Both help leverage application investments. Partial roll-forward recovery now speeds database recovery by allowing users to recover only a selected portion of a database for faster response. The move to 24 x 7 worldwide support is now part of HP's ALLBASE/SQL support service, which according to HP averages less than \$50 per month. Low support cost is a key component in HP's attractive five-year cost-of-ownership numbers.

### HP 3000 INTEGRATORS PROGRAM LAUNCHED

HP, this month, made formal a practice that has been growing on a de facto basis for some time — allowing systems integrators to replace HP sales people for small- and medium-size customers. In

times of steadily decreasing hardware margins, HP sought to cut sales costs for the HP 3000, while somehow supporting its customer base.

Under the new program, HP named 17 systems integrators in the United States that have proven experience in developing HP 3000 client-server systems. These firms will in effect become the first line of contact for HP 3000 customers at smaller firms.

Some observers worried that the new program would insert another level of confusion into the sales process, alienating customers and creating new problems. HP's intent is to provide more responsive service and reduce its sales costs.

The two-tier distributor, Client-Systems Inc. (Englewood, Colo.) provides the client-server hardware and software solutions that the regional systems integrators will use to implement client-server technology on the HP 3000 systems.

Regional systems integrators named to the program by HP include: Cypress Systems Ltd. (Manchester, Mo.), Data Based Systems (Flemington, N.J.), Design Automation (Houston, Texas), Ferrell Companies (Lakewood, Colo.), Hawthorne Computer Center (Portland, Ore.), Infoworld (Mentor, Ohio), Innovative Information Systems Inc. (IISI; Norwood, Mass.), Innovative Solutions (Torrance, Calif.), Kelly Computer (Mountain View, Calif.), Lilien Systems (Mill Valley, Calif.), Orion Group (South Bend, Ind.), Perfect Software Solutions Inc. (Garden City Park, N.Y.), Productive Software Systems Inc. (Buffalo Grove, Ill.), SPS (Rockville, Md.), The Apex Group (Columbia, Md.) and Votaw Data Systems Division (Fullerton, Calif.)

Sharp's Internet address:  
[sharp@cardinal.com](mailto:sharp@cardinal.com)



*client/server*

**TALK vs.  
PER<sub>4</sub>MANCE**

**IF YOU'RE TIRED** of double-talk about enterprise client/server application software, call **FOURTH SHIFT**. We'll show you what separates the pioneers from the pretenders, the leading edge from the bleeding edge, fact from fiction, and promises from performance.

Let's talk about it. 800-342-5675.



**THE JIT ENTERPRISE SYSTEM FOR UNIX/ORACLE**

Our JIT software solution is the world's premier Enterprise Resource Planning system. JIT's 60 integrated modules provide an enterprise view of operations: manufacturing, distribution and financial. JIT employs 4GL tools in an open environment using UNIX and Oracle, the powerhouse among relational database engines.



CIRCLE 132 ON READER CARD

**THE MANUFACTURING SOFTWARE SYSTEM FOR WINDOWS/NETWARE**

With its superior functionality and super fast implementation, it's no wonder readers of Manufacturing Systems magazine voted our Manufacturing Software System the best micro-based MRP II software. And with new features like SQL database access using Microsoft's ODBC and high-level application access using OLE 2 protocols, MSS defines cutting edge.



CIRCLE 182 ON READER CARD

*Learn why our performance is glowing.*

**FOURTH SHIFT**

WHAT THE WORLD IS SHIFTING TO

7900 International Drive  
Minneapolis, MN 55425  
800-342-5675 • 612-851-1500



**Some of the middlemen  
your HP products meet  
on their journey  
from the manufacturer to you.**

**Some of the middlemen  
your HP products meet  
when you buy them  
direct from Avnet Computer.**



**B**uy direct from Avnet Computer and we'll plug you into some of the most advanced, reliable and affordable network technology available — Hewlett-Packard's family of LAN products at incredibly low prices.

Start with the HP AdvanceStack Hub-48 — the new standard for 10Base-T hubs. It delivers all the manageability and functionality of chassis hubs, plus the scalability, flexibility and economy of stackable hubs for less than \$37 per port — the lowest price per port in the industry!

Or, consider the network-integrated HP Vectra N2 4/33si PC. Loaded with a 486/33MHz microprocessor, 210MB hard drive, 8MB RAM, ultra VGA, MS-DOS™, Windows™ and a mouse, it comes ready to plug and play for only \$1,413 — a price comparable to buying manufacturer direct!

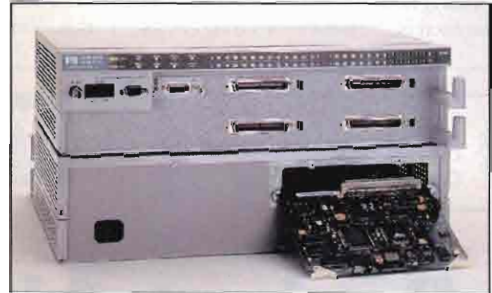
How can we go so low? Because Avnet Computer is the only value-added distributor that buys directly from HP and sells directly to you. With no aggregators, resellers or dealers who bump up costs in between.



It's what we call the Syndetic Supply System. And it's our way of bringing you prices less than half the mark-up of multi-tier distributors, with same-day shipping of off-the-shelf items.

So take the direct approach. Call Avnet Computer today for direct access to all HP's leading-edge networking products backed by complete technical support and flexible financing. Or, call today and place your order direct!

**( 8 0 0 ) 2 1 8 - 9 1 1 6**



**HP AdvanceStack 10Base-T Hub-48 \$1,772**

The lowest price per port in the industry!



**HP Vectra N2 4/33si PC \$1,413**

Includes a 486/33MHz microprocessor, 210MB hard drive, 8MB RAM, ultra VGA, MS-DOS and Windows.

# RADical Responses

In "Get RADical" [from the May 1994 issue], George Thompson includes the following constructions in the first four paragraphs: "sounding like a siren's call," "shell-shocked IS managers," "a Sisyphian struggle," "a completely futitarian exercise," "software knitting circles

of the computing cognoscente," "feeding frenzy is just the beginning," "to separate fact from factoid" and "popular delusions and the madness of the trade."

This is writing so bad that it beggars description. You do a disservice to the technical com-

munity and yourselves when you publish a stream of mind-numbing cliches like this and pretend that it is a technical article.

Stephen Porterfield  
Software Developer  
Walnut Creek, Calif.

*What we do here requires a certain way with words. It's part of my job, year in and year out, to turn a phrase or write a wrong. Although I try to mind my Ps and Qs, my policy has always been to live and learn — to turn swords into ploughshares so to speak. So, I'll try to knuckle down and not add more fuel to the fire. In other words, I'm setting out for the straight and narrow. —GT*

## ISO 9000 Certification

I read [Gordon McLachlan's] And Another Thing... column in the May 1994 issue. Interesting reading. My only question is: Is he a Rush fan?

Andy Van Fossen  
Ohio State University

*Actually the editorial staff are the Rush fans, at least when we need a title. — HP Pro Staff*

## Software Configuration Management

I saw Richard Riehle's article on SCM in the April 1994 issue, which I enjoyed. In the article, he briefly mentioned aspects of 3GL and object-oriented configuration management. I am responsible at HP for various aspects of SoftBench (a CASE environment) including configuration management. We have a variety of SCM mechanisms currently, but are migrating SoftBench to distributed object development. I was wondering if he has thoughts about object-oriented configuration management in more depth.

I would be very interested in any thoughts or pointers to other articles or research.

Tim Mikkelsen  
Open Integration  
Product Team Manager  
Software Engineering Systems Division  
Hewlett-Packard

*Be sure to look for more Objectively Speaking columns on this topic in upcoming issues of HP Professional.*

*HP Professional welcomes comments from its readers. Letters may be edited for brevity and clarity, and should be addressed to: HP Professional, 1300 Virginia Dr., Ste. 400, Fort Washington, PA 19034. Fax number: (215) 643-8099. Internet address for staff listed on the masthead: LASTNAME @ CARDINAL.COM*

*Please include a phone number for verification.*



**GE Rental/Lease**  
Computers for Business

**Workstation Rentals  
for Business**

## Project Ahead? Station Yourself With Us.

- Cost-effective rental of newest SUN, HP and Tadpole workstations:
  - Sun SPARCstation 10
  - HP Model 735
  - HP Model 715/75
  - Plus many others!
  - Tadpole SPARCbook 2
- Large rental inventory - overnight delivery available
- Used equipment for sale - Sun/HP/DEC
- Major credit cards accepted

**Call 1-800-GE-RENTS!**



CIRCLE 464 ON READER CARD



# HP 3000 Customer Connection Events on Tape

*Have you missed any of these informative events? Past audio and video conferences are available on tape, free of charge! Just call 1-800-224-HP3K to order.*

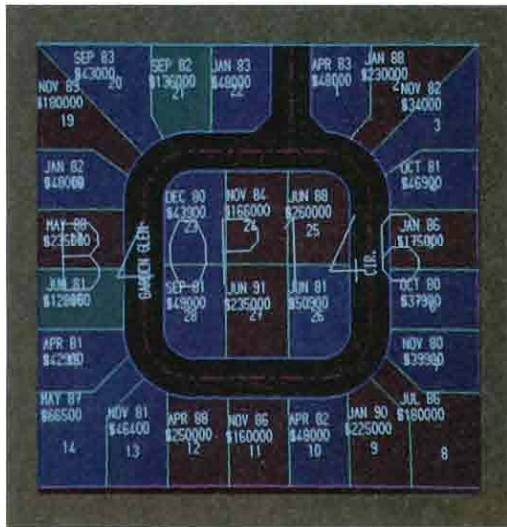
## **A**udio Conference Seminar Series

- How to Integrate PCs with Your HP 3000 in 90 Minutes (June 1993)
- How to Develop Portable Applications in 90 Minutes (July 1993)
- How to Migrate from MPE V to MPE/iX in 90 Minutes (January 1994)
- How to Consolidate Your HP 3000s in 90 Minutes (April 1994)
- How to Maximize Your System Availability in 90 Minutes (May 1994)

## **V**ideo Teleconferences

- HP 3000 Strategic Directions — Looking Forward to 1994 (November 1993)
- HP 3000 Technology Close-Up.— Desktop Integration and Decision Support (February 1994)
- HP 3000 Strategic Directions — Continuing the Vision (June 1994)

# Graphic Data Systems Creates The Model Map



## GDS

- Feature-based data model
- Models 2D and 3D graphics
- Runs on HP-UX, DEC, Open VMS and Sun Solaris 2

### Graphic Data Systems Corp.

13736 Riverport Dr.  
Maryland Heights, MO 63043  
tel: (800) GDS-4491  
fax: (314) 344-8429

CIRCLE 354 ON READER CARD

Converting maps to a digital format can be a taxing undertaking, but it doesn't have to be that way. After a two-day benchmark testing period which looked at the ability of a Geographic Information System (GIS) to identify areas on a map and to answer detailed queries about specific parcels of land, Jack Gordon, data processing manager at the Tulsa County Assessors Office (Tulsa, Okla.), chose Graphic Data Systems Corp.'s (Maryland Heights, Mo.) GDS. Gordon selected GDS over Intergraph Corp.'s Intergraph and Environmental System Research Institute's ARC/INFO.

According to Gordon, "based on the benchmark results that we established, [GDS] performed

better than the other two products. In fact, after the benchmark was finished, they were the only vendor that completed the benchmark successfully."

GDS' power comes from its feature-based data model that stores and retrieves graphic features and tabular data. GDS stores features once, so subsequent occurrences refer to the original. Layer-based data models usually store features as part of a layer and create multiple copies of the same feature.

GDS can be configured as a standalone workstation or in a client-server environment. It can be easily integrated into existing or planned computing environments. They currently are running GDS on seven HP 9000 Model 710s and 720s, as well as six X terminals.

GDS provides data security by assigning dataset read and write access privileges to each user. Duplicate datasets and separate systems are eliminated because GDS combines GIS, Automated Mapping and Facilities Management and Computer Aided Design and Drafting into one product.

Libraries containing menus, symbols, line styles and character styles are provided with the system and can be modified. You can create macros to simplify common or repetitive tasks. Gordon used GDS and worked with PlanGraphics (Frankfurt, Ken.) to create a specific application.

The GDS customization language is used to build custom applications and integrates with FORTRAN, PASCAL and C++. Sophisticated applications can be created by combining the feature-based data model with the customization tools.

GDS models 2D and 3D graphics; uses double precision data definition resulting in precise representation of geographic features; allows for distributed, multi-jurisdictional and multiuser access to the same geographic region; enables sharing through data and graphic translators; and provides fully interactive integrated COGO functionality, allowing precision input of coordinate geometry data.

GDS interfaces with several SQL-based RDBMSs including Oracle, DB2, Rdb, Informix, Ingres and Sybase. Through a live, two-way integration, you can retrieve or update the RDBMS with graphic operations. Graphics may be updated through an RDBMS session. GDS uses all RDBMS functions such as data dictionary, report generation and business graphics applications.

GDS runs on HP-UX, DEC Open VMS and Sun Solaris 2. Networks supported include DEC\*Net, TCP/IP, mainframe access via SNA gateways and Token Ring.

— Deborah Schwartz,  
Assistant Editor

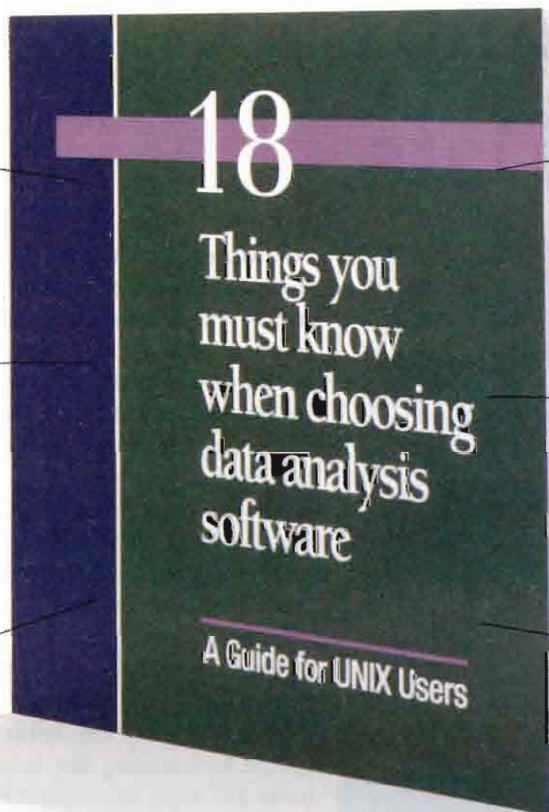


# Free

What's the single most important feature to look for?

Does the software combine strong off-the-shelf capabilities with customizability?

What's the biggest mistake you can make?



Will you have confidence in your results?

How well documented is the software?

Does the software provide presentation quality results?

*This new guide is yours free and without obligation when you call BBN at 800-331-2266 ext.91*

If you do data analysis, we have some important news. Now you can receive our valuable guide that includes information you must know when you choose data analysis software. It includes helpful charts, checklists and answers to important questions like "What is the most important feature you should look for?" and "What's the biggest mistake you can make?"

This free guide was created by BBN Software Products. Send for it now, and we'll also introduce you to a remarkable new product called BBN/Cornerstone™. It's exploratory data analysis software that's even easier to use than a spreadsheet, because it seamlessly integrates data access, visualization, analysis and presentation of results.

**BBN/Cornerstone**



So use the coupon below,  
or call BBN directly at  
**800-331-2266 ext. 91**

**CIRCLE 103 ON READER CARD**

## Easy

YES, please send me "The 18 Things You Must Know When Choosing Data Analysis Software" absolutely free and without obligation.

Name

Title

Company

Mail Stop

Address

City/State/Zip

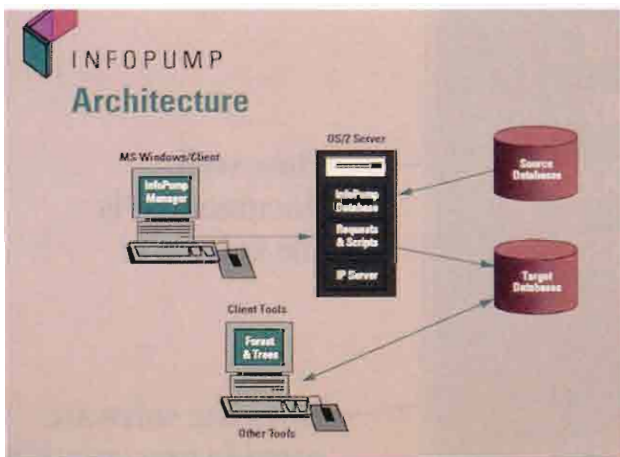
Telephone  E-Mail



Mail now, or fax coupon to  
508-429-8395 or:  
**Call 800-331-2266 ext.91**

**BBN SOFTWARE PRODUCTS CORPORATION**  
P.O. Box 6100, Holliston, MA 01746

# Trinzic Pumps Up Your Data



## INFOPUMP

- Ability to stage and synchronize data on a scheduled or event-driven basis
- Requests can be routed to single or multiple destinations
- OS/2 Server license costs \$25,000

### Trinzic Corp.

404 Wyman St.  
Ste. 320  
Waltham, MA 02254  
tel: (617) 891-6500  
fax: (617) 622-1544

CIRCLE 355 ON READER CARD

InfoPump from Trinzic Corp. (Waltham, Mass.) is a server-based data agent for moving, replicating, synchronizing, transforming and integrating data to and from multiple databases.

InfoPump simplifies data movement and the development of data routing applications that manage data staging, rightsizing and data synchronizing. With InfoPump you can automatically move and manipulate data to and from databases on a scheduled or event-driven basis.

When used for data staging, InfoPump performs necessary table joins and expands the data for a more complete and understandable result set. Data is more user-friendly, access to

host data is faster and less expensive, and end-user reliance on IS staff is reduced. InfoPump also improves the performance of front-end tools and host systems by eliminating redundant queries — data is extracted from the host once, then delivered to all interested users. Furthermore, you can build on your existing InfoPump scheduler automating data downloads and extracts.

Developing data routing applications with InfoPump is straight forward. First, define a profile by entering the server name and login information for each database. Then create a simple request to move data from a source to a destination using the native language of the source profile to describe the data. Next, generate the InfoPump scripting language and modify it to customize the application. Finally, test and validate the application using the rest of InfoPump's development environment.

InfoPump has several main components, including InfoPump Manager, a Microsoft Windows-based development environment used to define, build and debug data routing requests, monitor server activity and administer user access.

Simple routing requests move data from a single source to a single destination, while scripted requests provide in-

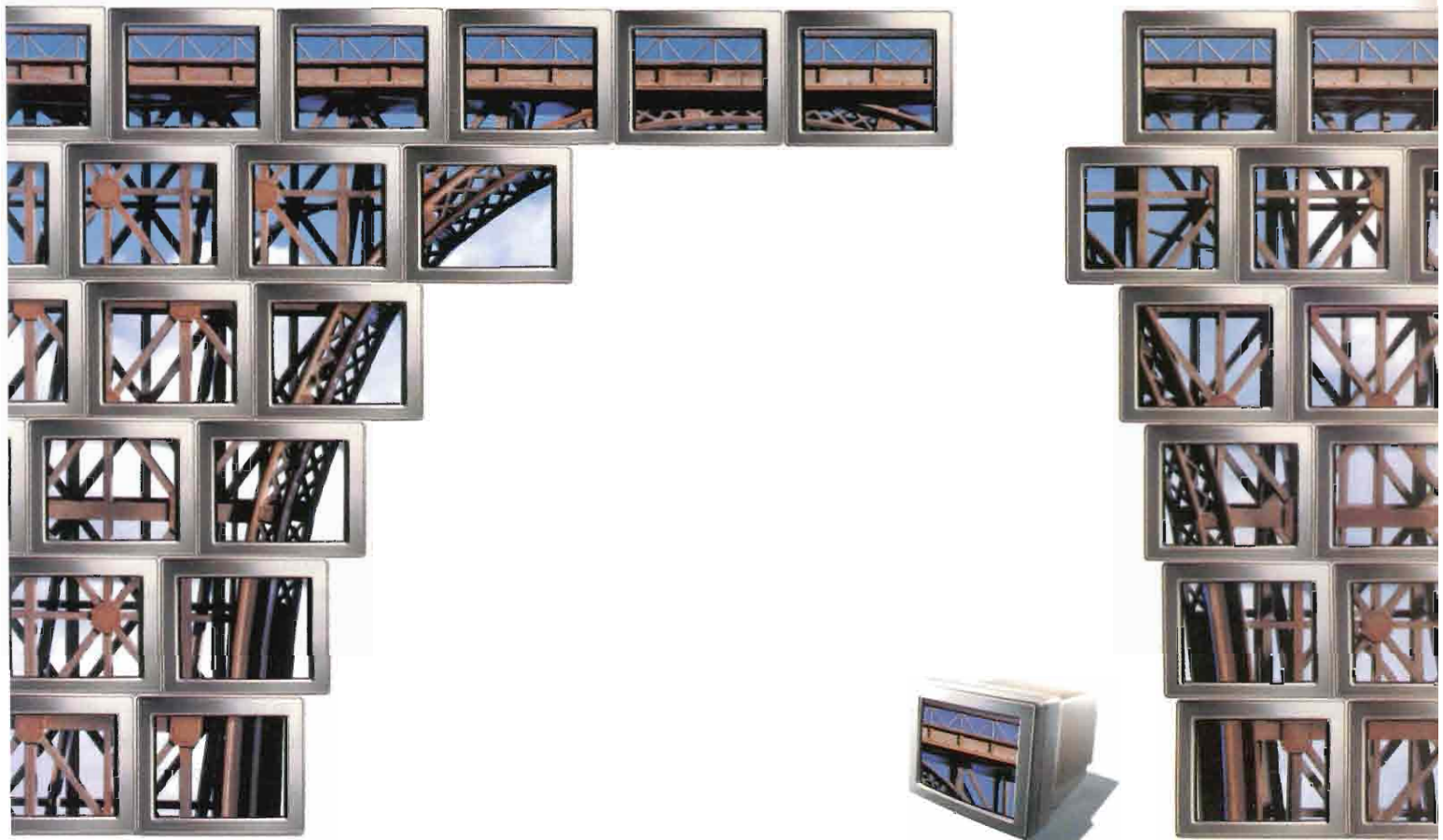
structions for moving data between multiple data sources and destinations, as well as manipulating the data en route. Scripted requests are generated automatically and can be edited and expanded using the InfoPump BASIC-like Script Language, offering a set of built-in functions that eliminate low-level database-specific APIs. The InfoPump Manager environment also includes a p-code compiler, static testing facility, interactive debugger, global variables, execution and error logs.

The InfoPump Server is the actual data pump, sitting between the internal database and the source and destination databases. Result sets from multiple sources can be combined and manipulated before being moved to the target database. The InfoPump Database Interfaces manage all database-specific activity from logons to data transformations. InfoPump supports most databases including Oracle, Sybase, SQL Server, Lotus Notes, DB2/2, SQLBase, NetWare SQL, DB2 and ASCII files.

InfoPump requires an OS/2-capable server and a 386 or higher PC. It will be available for UNIX and Windows NT servers in the fall. An OS/2 Server license for InfoPump is \$25,000.

—John P. Burke,  
HP 3000 Editor





## A MESSAGE ON THE RISK OF MOVING TO CLIENT/SERVER WITHOUT A COMPLETE SET OF TOOLS. BROUGHT TO YOU BY THE ONLY COMPANY TO OFFER ONE.

Some businesses are choosing a perilous route to client/server technology. By partnering with companies that don't offer all the tools necessary to make this transition, they risk making a huge investment that fails to take them where they need to go.

Which is why you should know about Cognos®. We are the only company to offer a complete set of tools to build and deploy client/server applications.

At the forefront of our product line are our application development tools, PowerHouse® and Axiant™, our second-generation client/server tool. Both enable developers to quickly create powerful high-performance applications.

We also offer Impromptu® and PowerPlay®, our

Windows-based data analysis and reporting tools that empower everyone in your organization by helping them retrieve and analyze the information they need to make informed business decisions. And these tools support leading databases like ORACLE, Sybase, and InterBase.

When it comes to client/server technology, it's not simply a question of crossing that bridge when you come to it. It's a question of finding a strong, stable bridge. Cognos.

For more information or a free copy of our extensive white paper, "Building and Deploying Applications in the '90s," call 1-800-223-2321, extension 6302. In Canada, call 1-800-361-3163.

**COGNOS**  
TOOLS THAT BUILD BUSINESS

# As You Like It

Software Clearing House Provides Customized Solutions With "Best Of Breed" Products



"We think of ourselves as knowledge brokers. We stay on top of both the products and services people are looking for, and the hottest solutions currently available in the marketplace."

Edward Bauer  
President/CEO  
Software Clearing House Inc.

## Software Clearing House Inc.

Three Centennial Plaza  
895 Central Ave.  
Cincinnati, OH 45202  
tel: (513) 579-0455  
fax: (513) 579-1064

CIRCLE 352 ON READER CARD

"We think of ourselves as knowledge brokers," says Ed Bauer, president of Software Clearing House Inc. (SCH; Cincinnati, Ohio). "We stay on top of both the products and services people are looking for, and the best and hottest solutions currently available in the marketplace."

Founded in 1979, SCH has taken a "distributed development" approach to new product development. This means discovering emerging technology, working with the developer, typically a small independent operation with focused expertise and interests, and then bringing the new product to market. The strategy has been to avoid imposing a rigid architecture on its products. Rather, it has followed a flexible path toward evolving industry standards, offering its customers a mix of what Bauer calls "best of breed" products.

"We employ a consultative sales methodology, an information-based relationship with our customers," Bauer says. "In our conversations with customers we pick up information on what they are looking for and use that to keep our developer associates up to date."

Attention to customers' interests led SCH, in 1989, to shift its primary focus from products for the Unisys and AT&T/NCR proprietary market to the UNIX and

open systems market. This year, according to Bauer, over 62 percent of the company's revenues will be UNIX-based. "Our customers told us UNIX offered them an opportunity, but they didn't see a good solution — either a provider or a software solution."

SCH products now support most major UNIX platforms, including HP 9000s. "HP is one of the primary platforms on which just about every one of our products is available," Bauer says. "If you look at a profile of the SCH-UNIX customer, typically the common denominator is HP."

Because of SCH's strategy, the company offers horizontal UNIX products that are not tied to specific industries. The product mix is concentrated in four main areas: integrated office automation, connectivity, distributed systems management and network management.

SCH markets the Uniplex office automation package; OS/EYE\*NODE, a network management tool, built on SNMP and OSI network management standards; and the SCH: Systems Administration Manager (SCH: SAM) application suite, an integrated system management environment for UNIX systems.

The REEL Manager package, built around the REEL-librarian tape library management system, provides enterprise-wide tape management, including network backup, distributed tape

access, drivers for StorageTek Automated Cartridge Library Systems and legacy tape format conversion.

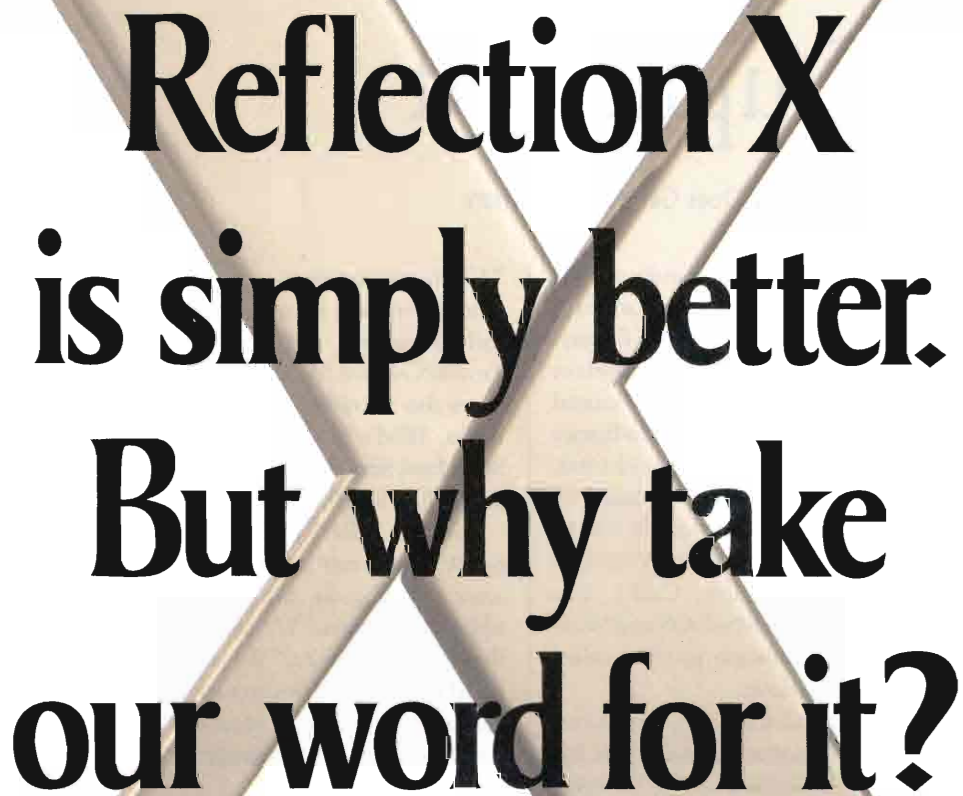
Bauer says, "People who are replacing mainframe installations with UNIX boxes have tape needs beyond simple backup and recovery. REEL Manager will handle whatever those needs are, be it interim storage, backup or data transfer in and out of a data center. There is nothing else available that does the same thing."

Daniel Raymond, MIS director at University of Montreal, discovered this when the University decided to migrate finance, payroll and personnel data from a Control Data mainframe to HP 9000 Series 800 servers. Eighteen months into the migration and still running the Control Data and HP systems in parallel, Raymond bought REEL-librarian.

There have been some bugs, Raymond says, but "If we didn't have that product, we would have had to move the files from the UNIX environment to the old mainframe environment and use the Control Data tape subsystem. We didn't want that. We wanted to have all the operations working on the UNIX system. So it was important that the system be up and running rapidly. Without REELlibrarian, we were stuck."

—Sam Dickey,  
Contributing Editor





# Reflection X is simply better. But why take our word for it?

**You be the judge.** Try Reflection® X free for 30 days, and you'll see why it's 'simply better.'

You'll discover complete PC-to-UNIX connectivity. Reflection X is the first 32-bit PC X server to include advanced TCP/IP for Windows, award-winning VT320 emulation, and sophisticated applications like FTP client and server and LPR/LPD. All from a single vendor.

You'll find Reflection X is easier to use, too, because it takes full advantage of Microsoft Windows. We've added features like drag-and-drop FTP and configurable panning. Plus, our intelligent client startup lets you launch X clients automatically—right out of the box!

Reflection X delivers top performance, reliability, and offers outstanding technical support.

So call today for your free 30-day evaluation. Because when it comes to 'simply better,' you know best.

**For your free 30-day evaluation  
of Reflection X, call**

**800-92NETWORK.**

In Europe, call +31.70.375.11.00  
Outside Europe, call 206.217.7100

 **Reflection**

*Making PC Connections Count*

# Often Emulated, Never Duplicated

Insignia Proves That Windows Emulation Does Get You Somewhere



"We'll support the next major release of Windows. We need to bring our solution into the daily lives of users."

Robert Lee  
Chief Executive Officer  
Insignia Solutions Inc.

## Insignia Solutions Inc.

1300 Charleston Rd.  
Mountain View, CA 94043  
tel: (415) 960-1010  
fax: (415) 964-5434

CIRCLE 351 ON READER CARD

In the computer industry, it's emulation not imitation, that's the sincerest form of flattery. No sooner than SunSelect (Chelmsford, Mass.) announced its Windows Application Binary Interface (WABI) in April 1992, Microsoft announced that it licensed its Windows API source code to Insignia Solutions (Mountain View, Calif.). The result: a full MS-DOS and Windows emulation product called SoftWindows.

Founded in 1986, Insignia is a wholly owned subsidiary of Insignia Solutions Ltd. (Wycombe, England). Although the company recently moved its headquarters to Mountain View, R&D is still done in the UK, according to Robert Lee, Insignia's CEO.

Insignia, known for its SoftPC series of DOS PC and Apple Macintosh emulation products, is counting on strategic partnerships with key industry vendors to help them in their corporate mission: adding value to RISC-based workstations for users who want to use their favorite DOS and Windows programs. Consequently, Insignia is playing an important role in what Summit Strategies is calling a transition from personal PCs to "enterprise-ready desktops."

SoftWindows debuted in December 1993 and in January 1994 became part of HP's new Enterprise Desktops — the 712/60 and

712/80 workstations. And in March, SoftWindows was again included as part of Apple's new PowerPC-based Macs. SoftWindows also is available for DEC's Alpha, IBM's RS/6000, Next-Step's Intel, Silicon Graphics' MIPS and all Sun SPARC platforms.

Like its SoftPC predecessors, SoftWindows emulates PC hardware including the disk and peripheral subsystems. "We start with the ICs," explains Lee. "We emulate the entire PC environment." But unlike the SoftPC products, SoftWindows takes advantage of Microsoft source code.

Apparently, it's good enough for Microsoft, which has included SoftWindows in its NT operating system to provide users with backwards compatibility with MS-DOS and 16-bit Windows applications.

Unfortunately, emulation software has a notorious reputation for slow performance and poor compatibility. But SoftWindows is expected to perform at 25MHz 486DX CPU levels or better. Lee says that "except for the most exotic applications [like those involving graphics], performance is now very satisfactory." Performance critical Windows API calls run natively in SoftWindows; non-API calls use the Intel 80286 emulation engine found in their SoftPC products. In fact, performance depends heavily on the speed of the workstation's CPU.

Sun Select's WABI is Insignia's primary competitor in the Windows emulation market. In fact, HP 712 workstations also include HP WABI 1.1. WABI is basically a reverse-engineered emulation product that makes native calls into the UNIX environment. Consequently, some Windows applications run faster under WABI than on PCs. But SoftWindows, says Lee, can be used with over 50,000 Windows and DOS applications while WABI runs about 13 "certified" Windows applications.

Lee also notes that SoftWindows supports sound input and CD-ROM formats for multimedia applications, as well as Microsoft's OLE and DDE data exchange interfaces. Most importantly for MIS, SoftWindows includes support for Novell NetWare, MS LAN Manager and TCP/IP. "By installing SoftWindows on a server, you can deploy it across an organization," says Lee.

In the future, Lee expects to continue to bring DOS/Windows compatibility "to those who want to bridge the UNIX and DOS/Windows world." However, growing with the ever increasing Windows market will be a challenge. "We'll support the next major release of Windows," says Lee. "We need to bring our solution into the daily lives of users."

George A. Thompson,  
Technical Editor



# WANNA Be Insignia.

## We Finally Figured Out What Wabi Means.

	<b>SoftWindows</b>	<b>Wabi</b>
Number of compatible applications you can run	Thousands	13?
Networking capability	Yes — supports NetWare, LAN Manager, Banyan VINES, TCP/IP	Not yet
Number of UNIX platforms you can run them on	Sun, HP, IBM, Digital, and SGI	3?
Availability	Shipping	On & Off
Microsoft Windows 3.1 and MS-DOS 6.21 included	Pre-installed	No

Everybody needs somebody to look up to — if you're looking to run Microsoft Windows™ and MS-DOS®-based applications on your UNIX workstation, you'll look up to SoftWindows™.

Only SoftWindows provides complete Microsoft Windows and MS-DOS compatibility for thousands of applications, across a range of UNIX platforms. Plus access to PC networks, printers, modems, file servers and support for PC CD-ROMs. The best part is you don't have to grow up to be like Insignia — SoftWindows is shipping today! Call us about our free evaluation program: 508-682-7600.



*Insignia Solutions*®

Insignia Solutions Inc., 6 Campanelli Drive, Andover, MA 01810

©1994 Insignia Solutions Inc. Insignia and Insignia Solutions are registered trademarks of Insignia Solutions Inc. Microsoft and MS-DOS are registered trademarks and Windows and the Windows logo are trademarks of Microsoft Corporation. SoftWindows is a trademark used under license. All other product names are trademarks or registered trademarks of their respective holders.

**CIRCLE 218 ON READER CARD**

# Smooth Sailing For Printers At The St. Lawrence Seaway

## Authority

Printers and computers don't always speak the same language. It's especially frustrating if you're working with a Novell LAN. And still more frustrating, if you're trying to provide printing services for remote offices. Wally Osadczuk, MIS coordinator for the St. Lawrence Seaway Authority (Cornwall, Ontario) found that out the hard way when he set up an Ethernet-based Novell network three years ago.

"NetWare is not very clever when it comes to printing," says Osadczuk. For example, he had to reserve several desktop PCs to double as remote print servers (as required by Novell's Pserver), which not only tied them up but slowed them down. But last year, according to Osadczuk, his printing problems went away when he discovered NetQue 3000 from Wilco AMS Inc. (Vero Beach, Fla.). And he saved \$30,000 in printer costs by using the same printer for HP 3000s and Novell LANs.

In addition, tying up users' PCs with remote print services went away and overall performance improved. A welcome relief for Osadczuk whose production and development environments depend on an HP 3000/960 and an HP 3000/927, respectively. "Setting up a gateway to pass 3000 spool files to Novell servers would

*continued on page 26*



## A Culture Change At Dannon

### *Client-Server Migration*

### *Accomplished With*

### *Progress Software*

The question: What is client-server? The answer ... well, no one is quite sure these days. Ask 100 people, get 100 different answers. But according to Crystal Kennedy, director of Information Services at Dannon Industries (Tarrytown, N.Y.), client-server is being able to take advantage of all aspects of your business, so they work the best for you.

Dannon Industries, a leading manufacturer and distributor of yogurt products with sales last year of \$450 million, runs their applications, such as a finished goods inventory, wholesale distribution and trade marketing systems, as well as a small parts maintenance package, on a variety of platforms.

In 1986, Dannon first started using Progress Software's (Bedford, Mass.) Progress, a platform-independent application development environment (ADE) for rapidly developing and deploying mission-critical applications across client-server, host-based and mixed com-

*continued on page 26*





23:30

LIGHTS OUT  
OPERATION

## 12 TAPE AUTOCHANGER FOR UNATTENDED BACKUP!

Herstal's DDS Autochanger provides up to 96 Gigabytes of **Unattended Backup** so you can enjoy a good night's sleep without worrying about who or what is backing up your **HP** system.

Available as an upgrade to your existing **HP DDS** drive, or as a subsystem containing HP's new 8 GB drive, our Autochanger is the perfect solution for your backup needs.



7414 Manatee Street  
Sarasota, FL 34243-1824, U.S.A.  
Phone: 1-813-358-2001  
Fax: 1-813-358-2010  
E-MAIL: SALES @ HERSTAL.COM

CIRCLE 173 ON READER CARD

## Seaway *continued from page 24*

work locally, but without a T1 line, it's difficult to do remotely," explains Osadczyk.

However, by using NetQue 3000's serial input port (with Terminal Type 22/26 remote spooling status checking) Osadczyk says, "it buys us a 3000 port directly to a laser printer from a remote location." NetQue can be used with two line printers or plotters when used in departments that require only Novell networks. By using the NetQue 3000's serial port, Osadczyk was able to redeploy 25 existing printers at substantial savings. Consequently, it is no longer necessary to have two printers in each department. Osadczyk's mix of printers includes HP LaserJet Series II, III, IIIId, IIP and some dot matrix printers.

*NetQue can be used with two line printers or plotters when used in departments that require only Novell networks*

The NetQue 3000 can be configured as a remote printer or as a print server. When working as a print server, the NetQue 3000 broadcasts its services network-wide. "Unfortunately, there's no way to turn it off," says Osadczyk.

For administrative purposes, the

Seaway chose to implement their NetQue 3000s as remote printers and these broadcasts are additional unnecessary noise on the wire.

With three different remote locations and 50 remote printers, "we do a fairly high volume of printing," says Osadczyk. "Well beyond what's recommended," he admits. The St. Lawrence Seaway Authority provides all the computing and end-user services necessary in maintaining the St. Lawrence Waterway. And now Osadczyk has the ability to access and share printers anywhere across their WAN. "We get good throughput, it doesn't clog the line, and it helps us keep communications costs down."

— George A. Thompson,  
Technical Editor

## Dannon *continued from page 24*

puting environments. At that time, they integrated Version 2 into their manufacturing and distribution system which was running on DOS PCs. Since then, Dannon has migrated the Progress updates to SCO UNIX and HP 9000 Model 835 machines.

Recently, Dannon has migrated their applications running on an RS/6000 to a client-server environment to ensure that "information is more readily available to the clients." According to Kennedy, client-server provides Dannon with a competitive edge. "In order to stay the number one yogurt manufacturer, it is necessary to maintain every aspect of your business and to monitor changing priorities. And client-server is one of those priorities."

To help with the migration, Dannon currently is using Progress Version 6.3 running on HP G30s. "Progress is easily transportable from platform to platform as is apparent because we've been able to move



across platforms," Kennedy says. She adds that Dannon needed to be able to access data from any point within the network and "Progress has allowed data to move across platforms."

Dannon has looked at a beta version of Progress Version 7, which includes GUI and character development tools to enable developers to build applications with the Progress Version 7 RDBMS, but

has no definite plans to upgrade yet due to the necessary commitment to rewrite applications.

Overall, Kennedy feels that the migration went smoothly because of the amount of support she received. "You can't do 100 percent, but what you can do, can only be done with the help of your support staff."

— Deborah Schwartz,  
Assistant Editor



ISO 9002



Certificate No. FM 26594



**N**ow you can add workstations to your Domain/OS or HP-UX environment at only a fraction of the list price.

That's what remanufacturing is all about. Recent model, lower cost equipment that runs like new because it has been rebuilt. From the ground up. To manufacturer's specifications.

Literally manufactured a second time. By **Tryonics**,

Why  
pay  
more  
?

the people who know how to optimize these systems for your installation—new or existing.

**Tryonics** delivers the highest quality remanufactured workstations on the market today. Backed with technical expertise, full 90-day warranty and eligible for manufacturer's maintenance contract.

Before you pay more, call **1-800-551-6236**

 ***tryonics inc.***

Workstation Computers and Services

CIRCLE 477 ON READER CARD

Fax (603) 427-6843 Email: info@tryonics.com 170 West Road Suite #15 Portsmouth, NH 03801

# Remote

# Possible

**GEORGE A. THOMPSON**

Wireless LANs  
No Longer  
Shocking  
To End Users



# N

ow that more corporations and computer users are "Goin' Mobile," Toffler's vision of Adhocracy — after more than 20 years in the making — is finally coming to fruition inside the "wall-less offices" of "virtual corporations." According to some estimates there are already 24 million people who work on the move in the United States alone, plus another 37 million who work from home or from remote locations.

The net effect? Corporations are finally learning "to let go" as mobile computer users are demanding, and getting, remote access to E-mail, paging, messaging and fax services, as well as office computing resources — namely LANs.

Simply put, mobile users require mobile data. And, accord-





# ities



"We are, in fact, witnessing the arrival of a new organizational system that will increasingly challenge and ultimately supplant [corporate] bureaucracy. This is the organization of the future. I call it "Ad-hocracy." ...the fast moving, information-rich, kinetic organization of the future, filled with transient cells and extremely mobile individuals."

Alvin Toffler,  
Future Shock, 1970.

*Editor's Note:* In this second part of a two-part mobile computing feature, George A. Thompson examines the impact and options of wireless computing.

ing to Datacomm Research (Wilmette, Ill.), their appetite will create in the United States a \$3.7 billion mobile data industry (which includes hardware and software, wireless infrastructures and network service revenues) by the year 2002. Although international standards remain murky, wireless is expected to have worldwide impact as well.

Typical applications for mobile data already encompass customized solutions in long-haul trucking, public safety, courier services and taxi dispatch. New applications are being pioneered in:

- Health care — patient record management and point-of-care computing.

- Retail — point-of-sale and point-of-service applications.
- Field Service — remote data entry of customer orders.

New horizontal applications are being pioneered in several segments by general business users like:

- Travelling professionals — so called "road warriors" — who need a convenient way to transfer files to and from the corporate LAN before and after business trips.
- Sales and service people who visit branch offices and need to exchange information with the corporate LAN when they arrive.
- Members of workgroups exchanging electronic documents and spreadsheets, and accessing information via database servers.

Wireless networks can be classified into three broad categories: Wide Area Networks (WANs), Metropolitan Area Networks (MANs) and Local Area Networks (LANs). Satellite-based WANs provide continuous, low-speed, two-way messaging virtually anywhere in the United States. Satellite-based networks are used within the transportation industry for tracking and monitoring vehicle and package information.

Wireless MANs provide radio networks within major cities and surrounding areas. Under license from the Federal Communications Commission (FCC), gas utilities, police and fire departments install, operate and maintain private radio networks throughout the United States. Public packet-switched radio networks provide one-way and two-way communications originating from a central site which are then broadcast to receivers on any number of portable devices (notebook laptops, palmtops, PDAs). Beepers and pagers take advantage of one-way communications to provide alphanumeric information and short messages to their users.

The first and now largest nationwide paging and voice messaging service was provided by SkyTel Corp. (Washington, D.C.) in 1987. SkyTel's main competitor is Motorola's Electronic Mail Broadcast to a Roaming Computer (EMBARC) service which delivers messages to users in the United States and Canada. Messages can be directed to a single individual or simultaneously to a geographically dispersed group. Like SkyTel, EMBARC allows you to receive messages from any public E-mail system (e.g., MCI, CompuServe) compatible with the X.400 standard.

Via Motorola's NewsStream (marketed by SkyTel as SkyStream), subscribers also can choose to receive information from services like USA Today, Reuters, Individual Inc. and ScoreQuest. NewsStream is a portable receiver that connects to a RS-232 interface (NewsCard is a Type II PCMCIA version). Motorola is working with manufacturers and service providers to incorporate NewsStream with current and future devices. For example, HP's 95LX and 100LX palmtops offer a NewsStream receiver as an option. NewsStream adapters also can be used on Casio's Z-7000 PDA and Apple's PowerBook notebooks.

It's been a two-way race between ARDIS (Lincolnshire, Ill.)

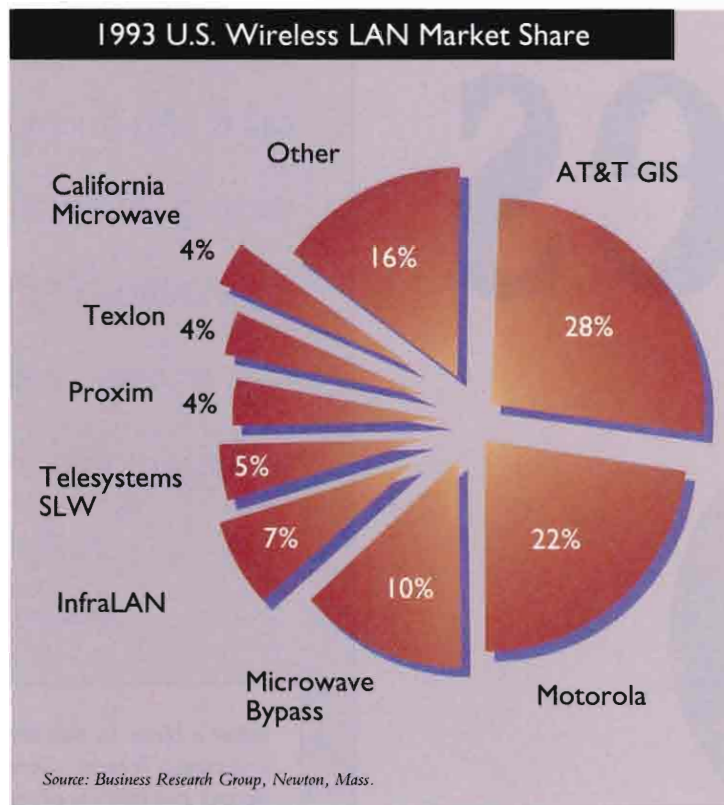
and RAM Mobile Data (Woodbridge, N.J.) when it comes to providing two-way wireless MAN services. Notebook computers or palmtops use an attached two-way transceiver (or it may be dedicated unit like Motorola's InfoTAC) which supports ARDIS or RAM or both. ARDIS, first provided information to IBM field representatives before coming to a 50/50 joint venture between IBM and Motorola in April 1990.

ARDIS covers 80 percent of the U.S. population. Transmitters are networked via dedicated land-based lines. ARDIS is located in the top 400 metropolitan areas and is available to large corporate customers and OEMs. For example, ARDIS is used by Avis Rent-A-Car, Otis Elevator and United Parcel Service to provide information to field service representatives.

RAM Mobile Data, a joint venture of RAM Broadcasting Corp. and Bell South began in October 1992. RAM Mobile Data depends on Mobitex technology developed by Ericsson GE (Paramus, N.J.) the Swedish telecommunications giant. RAM Mobile is available in 6,000 cities and towns covering 90 percent of the U.S. urban business population. Unlike ARDIS, the Mobitex technology automatically registers the location of subscribers who log on, and stores and forwards E-mail until a user is back in range of a transmitting site.

Both ARDIS and RAM operate in the 900 MHz range and transmit packets from 240 to 500 bytes. ARDIS transmits faster at 19.2 Kbps than does RAM at 8 Kbps, making such services appropriate for field sales, service representatives and knowledge workers to send and receive E-mail and small file transfers. However, one solution to expand those capabilities lies in Cellular Digital Packet Data (CDPD).

CDPD is being developed by an industry consortium consisting of all RBOCs (except Bell South), GTE, Mobilnet/Contel Cellular, AT&T GIS, McCaw Cellular, Nynex Mobile Communications, PacTel Cellular and others. CDPD is a scheme to use idle voice time on existing cellular phone systems with packets of digital data transmissions. Rather than having to construct, manage and maintain separate networks as do ARDIS and RAM, cellular carriers are taking advantage of the 10,000 nationwide "cells" already established (a \$20 billion infrastructure).







# Location is Everything.

Any printer, Any location, Any time!  
The frustration of having the right printer for the job but not being able to access it is over. NBSpool from Quest Software lets the HP 3000 user send spoolfiles to a multitude of different destinations. All of the translating and handshaking required by the various environments is handled invisibly by NBSpool and its

optional modules.

NBSpool, for MPE and HP/UX systems, also creates added flexibility by allowing jobs to be moved to any HP 3000 for execution. Spoolfiles are then either automatically kept or deleted once the move is complete. NBSpool makes all this possible with connectivity modules such as: JetDirect Printer Access, Novell Netware, UNIX and LAN Manager integration.

If your output management strategy is bogged down by underutilized printers, then take a look at NBSpool.

We think you'll like the view. Call Quest Software 714-720-1454 or e-mail: [info@quests.com](mailto:info@quests.com)



**QUEST  
SOFTWARE**



CIRCLE 268 ON READER CARD

Consequently, both voice and data traffic can be carried on the same network. Existing dial-up fax/modems can then be used rather than specially designed and often bulky radio modems required by ARDIS and RAM (and they don't have a fax capability). Channel speed for CDPD is 19.2 Kbps. In December 1993, Bell Atlantic deployed AT&T's CDPD technology in five cells around the Washington/Baltimore areas.

Wireless LAN technology provides a means to connect an office, a building, factory or warehouse; internetworks can be used to cover multiple sites in a campus-wide situation. Wireless LANs can, therefore, be a good substitute for desktop LANs in temporary situations, eliminating a myriad of cables. Or they can be an extension of an already wired Ethernet or Token Ring LAN, appropriate for those people moving throughout a building or campus, which by some estimates includes about 50 percent of office-bound workers.

But the proliferation of notebook laptops, palmtops and PDAs make the most compelling case for wireless LANs. In fact, Datacomm Research expects that wireless LANs will be one of the defining factors of the mobile data industry of the future. Data rates of wireless LANs are currently limited and costs have been prohibitive, but costs are now declining while data rates are increasing. Thus, making wireless LANs a growth opportunity for vendors and a business decision for buyers.

### A SPECTRUM OF SOLUTIONS

IN THE WIRELESS WORLD, mobile data is carried on the backs of signals transmitted within several portions of the electromagnetic spectrum. For wireless LANs, infrared, microwave and radio frequencies provide the medium of exchange for mobile data.

Within an office or a building, infrared (IR) transmission is the best means for interconnecting a roomful of PCs and other IR-capable devices. IR frequencies cover that portion of the

electromagnetic spectrum that is less than visible light and greater than microwaves. In practice, there are two kinds of IR-based wireless LAN solutions: diffuse IR and directed (or line of sight) IR.

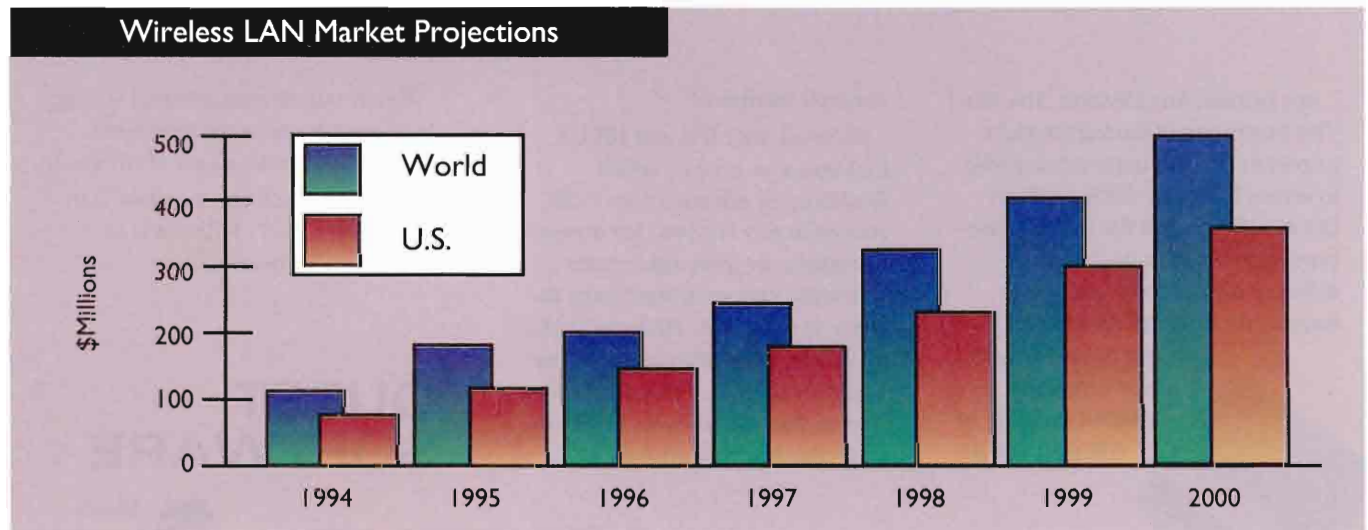
Diffuse IR uses the surfaces of objects (office walls and ceilings) to bounce an IR signal between a transmitter and a receiver to create a wireless networks within a single room. For example, SpectrixLite from Spectrix Corp. (Evanston, Ill.) uses diffuse IR to provide wireless coverage of indoor areas with a 4 Mbps data transfer rate at up to 50 feet. Collaborate is another diffuse IR product from Photonics (Campbell, Calif.). Collaborate can provide data rates up to 1 Mbps at 900 to 3,600 feet.

Line of sight IR, on the other hand works like a TV remote control. Devices must be directed at each other to communicate and transfer data. While directed IR provides higher data transmission rates, InfraLAN Technologies' (Acton, Mass.) InfraLAN offers a 16 Mbps data rate (typical Token Ring LAN speeds). But, its range is limited. InfraLAN provides communications at up to 80 feet.

In general, wireless IR is inexpensive to implement and it is relatively easy to add additional nodes. In addition, IR is not regulated by the FCC.

On a smaller scale, HP's serial IR interfaces included with its LX series of palmtops and OmniBook portables, as well as on some models of their Vectra PCs, allow wireless point-and-shoot data communications at up to 115.2 Kbps. This low-power IR transmission is a low-cost and convenient way to connect desktops, portables, printers and PDAs over a range of several hundred feet. The Infrared Data Association (IrDA), chaired by HP's John Romero, is an organization of vendors whose goal is to create a serial IR standard.

Narrowband Microwave (18 GHz) is another alternative for within-building LANs. Motorola's Altair Plus II provides an Ethernet-compliant LAN with a maximum throughput of 5.7 Mbps. According to Motorola, Altair Plus II has a range of



Source: Business Research Group Newton, Mass.



See us at Siggraph, July 26-28 Booth #1738 - Orlando, FL

# TOOL TIME with IMSL and Hewlett-Packard

Looking for tools to speed your application development?



IMSL numerical and graphical tools have the power and flexibility you need for technical application development on your Hewlett-Packard workstation!

- Reduce source code by up to 95%
- Speed your application development
- Save considerable time and expense

### IMSL FORTRAN and C Numerical Libraries:

- Widest selection of mathematical and statistical functions available in the industry
- Online documentation provides powerful search capabilities with quick copy and paste examples
- Take full advantage of C language features

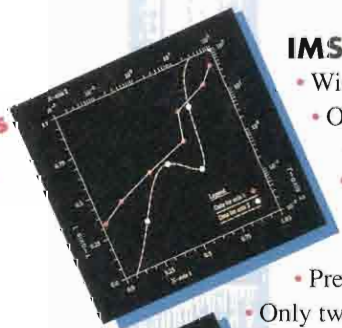
### IMSL Exponent Graphics® for FORTRAN, C, and X:

- Presentation-quality 2D and 3D graphics
- Only two function calls can automatically produce one of over 30 different plot types
- Powerful, built-in interactive editing and customization tools
- Supports CRX graphics accelerators
- CGM and many other device drivers included *at no charge*

### HP 9000 Series 700 workstations

- Fastest mid-range 3D graphics performance and best 3D entry-level price/performance
- Outstanding integer and floating point performance
- Innovative integrated color graphics capabilities
- Industry-standard expandability through an EISA slot
- Leading memory and disk configurability
- Lowest-cost true color graphics available in the industry

Numerics Tools



Graphics Tools



**IMSL** IMSL Fortran and C application development tools from Visual Numerics™  
Houston • Boulder • London • Paris • Stuttgart • Tokyo

For more information about IMSL numerical and graphical tools or for a 30-day free trial, call:

**1-800-364-8880**  
or (713) 954-6785 fax (713) 781-9260

3,940 feet in the United States and 6,900 feet in most other countries. The product also offers SNMP compatibility, a unique feature among wireless products.

While Motorola's Altair provides a wireless solution for the desktop it does not address the needs of mobile wireless communications like wireless technologies based on IR and radio.

## RADIO DAZE

UNLIKE IR, WIRELESS technologies using radio frequencies fall under the governmental licenses and regulations of the FCC. However, the greatest potential for wireless LANs lies in an unlicensed portion of that part of the spectrum known as the ISM (Industrial, Scientific and Medical) band.

In 1985, the FCC set aside frequency ranges (900-928 MHz, 2400-2483.5 MHz and 5725-5850 MHz) for commercial uses of spread spectrum technology. Developed by the military during World War II to prevent signal jamming and interference,

spread spectrum wireless technology is being widely adopted by vendors and users alike.

Limited to 1 watt of power, spread spectrum modulates a radio frequency signal such that it occupies a wider band than it actually is. Like IR, spread spectrum wireless options fall into two main categories: direct sequence and frequency hopping.

Direct sequence spread spectrum transmissions sequentially sends packets of data and spreads it across the frequency band. By contrast, frequency hopping spreads the signal by randomly moving from one frequency to another several times a second.

Products using direct sequence spread spectrum include WaveLAN from AT&T GIS (Dayton, Ohio), DEC (Maynard, Mass.) and Proxim (Mountain View, Calif.). ATT GIS inherited WaveLAN (which began shipping in 1991) in its merger with NCR. DEC is reselling and enhancing the WaveLAN product. Both vendor's products provide a 2 Mbps data rate within a range of 800 feet. Proxim was one of the first vendors to offer a wireless technology based on spread spectrum technology. Proxim's direct sequence product, RangeLAN operates at 242 Kbps within a range of 300 to 500 feet.

However, all three companies are enhancing their wireless products by providing roaming capabilities. Roaming allows for mobile users to switch automatically between access points creating a seamless wireless network. Moving about freely with ad hoc access to corporate databases is a key aspect of mobile computing and wireless networking. For instance, without roaming capability, much of the advantage of working with pen-enabled devices is lost.

In 1994, Proxim introduced its RangeLAN2, a frequency-hopping product operating the 2.4 to 2.483 GHz band. RangeLAN2 provides a 1.6 Mbps data rate with a maximum range of 500 feet in office environments (1,000 feet in open spaces). NetWave is a competitive product from Xircom Inc. (Calabasas, Calif.) that also uses frequency hopping, spread spectrum wireless technology in the 2.4 GHz range with a 1 Mbps data rate at up to 40 to 50 meters through walls. Both companies offer PCMCIA Type II versions for portable devices equipped with PCMCIA slots.

Whether you find yourself walking the halls (LAN), traveling to city hall (MAN) or trekking across the Mojave Desert (WAN), the connectivity will be seamless. BRG expects that by the year 2000, the U.S. wireless LAN market will grow to \$350 million and to \$500 million worldwide.

The trend is clear: BRG predicts that by 1996, wireless LANs and wireless packet data services will grow faster than other wireless data network types such as paging and satellite services. So MIS must be prepared for the coming adhococracy which will require links to other networks and the sharing of applications and information. In the virtual corporation, workers and information will be location-independent which will bring its own challenges and opportunities for the virtual MIS manager.

### Companies Mentioned In This Article

ARDIS  
300 Knightsbridge Pkwy.  
Lincolnshire, IL 60069  
(800) 662-5328  
CIRCLE 439 ON READER CARD

AT&T GIS  
1700 S. Patterson Blvd.  
Dayton, OH 45479  
(513) 445-5000  
CIRCLE 438 ON READER CARD

Digital Equipment Corp.  
146 Main St.  
Maynard, MA 01754  
(508) 493-5111  
CIRCLE 437 ON READER CARD

EMBARC/NewsStream/NewsCard  
c/o Motorola Inc.  
1500 Gatewar Blvd.  
Boynton Beach, FL 33426  
(800) 542-7882  
CIRCLE 435 ON READER CARD

Ericsson GE Mobile Data Inc.  
15 E. Midland Ave.  
Paramus, NJ 07652  
(201) 265-6600  
CIRCLE 436 ON READER CARD

InfraLAN Technologies Inc.  
380 Massachusetts Ave.  
Acton, MA 01720  
(508) 266-1500  
CIRCLE 434 ON READER CARD

Motorola Inc.  
Wireless Data Group  
Altair Product Operations  
50 East Commerce Dr.  
Ste. M-1  
Schaumburg, IL 60173  
(800) 233-0877  
CIRCLE 433 ON READER CARD

Photonics  
200 E. Hacienda Ave.  
Campbell, CA  
(408) 370-3033  
CIRCLE 431 ON READER CARD

Proxim Inc.  
295 North Bernardo Ave.  
Mountain View, CA 94043  
(415) 960-1630  
CIRCLE 430 ON READER CARD

RAM Mobile Data  
10 Woodbridge Center Dr.  
Woodbury Heights, NJ 07095  
(908) 602-5500  
CIRCLE 429 ON READER CARD

SkyTel Corp.  
1350 I St. N.W.  
Washington, D.C. 2005  
(800) 759-8737  
CIRCLE 432 ON READER CARD

Spectrix Corp.  
900 University Place  
Evanston, IL 60201  
(708) 491-4534  
CIRCLE 428 ON READER CARD

Xircom Inc.  
26025 Mureau Rd.  
Calabasas, CA 91302  
(818) 878-7600  
CIRCLE 427 ON READER CARD

Would you like to continue to see articles on this topic?  
Circle on reader card  
yes 346 no 345





**Since introducing MAC-PAC® OPEN software for UNIX®,  
there's been some hissing from the competition.**

There are a lot of lofty promises made by manufacturing software vendors. But when you consider how little evidence supports them, their claims start to sound a bit inflated.

MAC-PAC OPEN isn't built on a promise. It's built on some of the best business practices of today's industry leaders. It's built on proven

technical architecture for true hardware and database flexibility. It's built on the unsurpassed industry experience of Andersen Consulting.

Which means that MAC-PAC OPEN, available on IBM® AS/400® or UNIX hardware platforms and databases, can actually deliver exactly what manufacturers really need. A robust,

integrated, full-enterprise solution.

So it's no wonder the competition is doing so much hissing.

**ANDERSEN  
CONSULTING**  
**Software Products**

*For more information on MAC-PAC OPEN, call 1-800-541-7512 or 1-312-507-6588.*

IBM and AS/400 are registered trademarks of International Business Machines Corporation. MAC-PAC is a registered trademark of Andersen Consulting. UNIX® is a registered trademark of UNIX Systems Laboratories, Inc.

**CIRCLE 174 ON READER CARD**

What's All The

# Hub-Bub, Bub

*Bridges, Routers,  
Brouters  
and Hubs Help You  
Make The Right  
Connections.*

**The crucial fact** of corporate computing is that what everybody thinks is the magic in computing is not really what it is, anymore — it's changed. People out there in the great office still think that a computer is a zingo-fast silicon chip with some input/output attached to it so we can first try to tell it what to do, and second, after it doesn't do it, we try to discover just what it is really doing, instead of what we told it to do.

Many people still think that is what computing is all about — well, it isn't. It can't be anymore. That was an OK explanation for when computer chips cost an arm and a leg and your firstborn. But now computer chips are so cheap that we're pulling them out of breakfast cereals. The magic of computing has moved on to new horizons.

Yep, its another one of those things managers like to get excited about — a

**BILL SHARP**



## NOW THERE'S A NETWORKED SYSTEMS MANAGEMENT SOLUTION FOR UNIX THAT WASN'T BORN YESTERDAY

**U**NIX as a commercial data processing environment is still in its infancy. But that doesn't mean you have to settle for UNIX systems management tools that aren't grown up.

Unison-Tymlabs is pleased to announce Maestro for UNIX, the first full-featured batch job scheduling and workload management solution for UNIX systems. Maestro has been solving batch job management problems in demanding HP 3000 commercial environments since 1986, and is currently installed on thousands of systems worldwide.

Maestro for UNIX enables systems managers or administrators to automate network job scheduling, tracking, and monitoring to increase throughput and reduce processing errors. It can schedule jobs anywhere on your network according to customized business calendars, in addition to date, day of the week, and time.

You can make job initiation dependent on the successful completion of other jobs, the existence of needed files, user response to a prompt, or the availability of hardware or data resources. The Maestro master console on the server provides a single interface for all monitoring and control.

### MAESTRO—NOW ON UNIX

Maestro runs in AIX, HP-UX, Sun Solaris, NCR, and HP-MPE environments, and on heterogeneous networks.

Maestro for UNIX treats your batch job scheduling and workload management as more than just child's play. Call us today for a complimentary demonstration copy or more information.



YOUR OPERATIONS  
MANAGEMENT PARTNERS

HEADQUARTERS: 408/245-3000, Fax 408/245-1412

TYMLABS DIVISION: 512/478-0611, Fax 512/479-0735

EUROPEAN HEADQUARTERS: +44 (0)582 462424,

Fax +44 (0)582 462425

© 1993 Unison-Tymlabs. All rights reserved.

CIRCLE 499 ON READER CARD

# Hub-Bub, Bub

paradigm shift. There's a new big deal in computing, the nub of the thing, the heart of the matter, the filling at the center of the whole computational Twinkie — internetworking.

Computing is a yawn anymore, and networking in any local, homogeneous sense is a bore. But linking up LANs is where the action is today. LANs have limits to how large they can grow without having performance slow to a slug-like pace. The only cure is to keep LAN size reasonable enough to be efficient. Instead, the secret to computing is linking LANs. We're

talking internetworking with bridges, routers and hubs.

A bridge is a connection between two networks that functions at the media access control (MAC) level of the OSI model's datalink layer (see *Figure 1*). The bridge looks at the MAC layer for each data packet to decide which local LAN is right for the message. All three elements are, in effect, part of a single, larger network. Most often, this is done with local LANs joined into one larger WAN using a bridge. The systems on either end of the bridge have no idea that the other LAN is not sitting right beside them and, therefore, treat each other like local systems, even if they are on opposite sides of the globe.

An advantage of bridges is that, because they function below the networking level, they can ignore protocol issues and simply relay the data, relying on recipient computers to have the correct protocol to interpret the data. In other words, the bridge doesn't care what the blips are; it just sends them across.

A router, like its dumber cousin the bridge, connects two or more LANs. But in this case, some intelligence is involved, because the router will not simply pass along everything that shows up. In fact, it is designed to be selective about what moves from one LAN to another. Routers look at the next layer up in the OSI model, the network layer (see *Figure 2*). Routers make use of internetwork or global addresses that are unique across all the interconnected LANs.

This means if Fritz in Peoria, Ill. wants to send a message across the network to Sasha in Paris, the router between their local LANs must comprehend the individual addresses of their computers. The router only sends across Fritz's message to Sasha because it is clear that the message is for the Paris LAN because of the internetworking address. Better yet, the router can determine the cheapest or fastest route for the message. Not all network protocols support global addressing yet, so some computer vendors' protocols can't be used with a router.

On the downside, routers are protocol dependent and, therefore, will be dedicated to sending messages of a particular type, such as TCP/IP or OSI. Then again, bridge and router products, like so many other areas of computing, are blurring these definitions. Some people are calling products that cross the definition lines be-

Figure 1

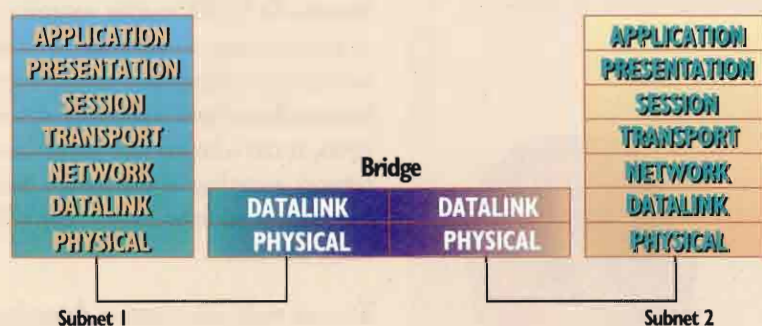


Figure 2

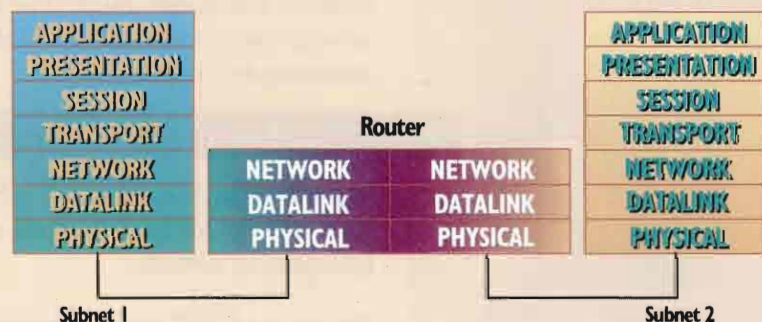
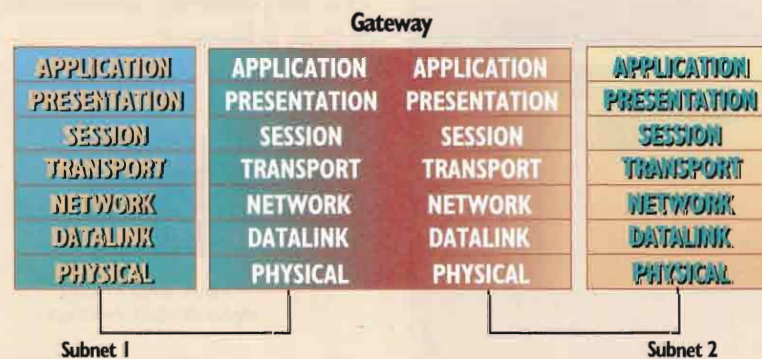


Figure 3





# EXCEED 4: THE NEW GENERATION OF PC-TO-UNIX INTEGRATION SOFTWARE.

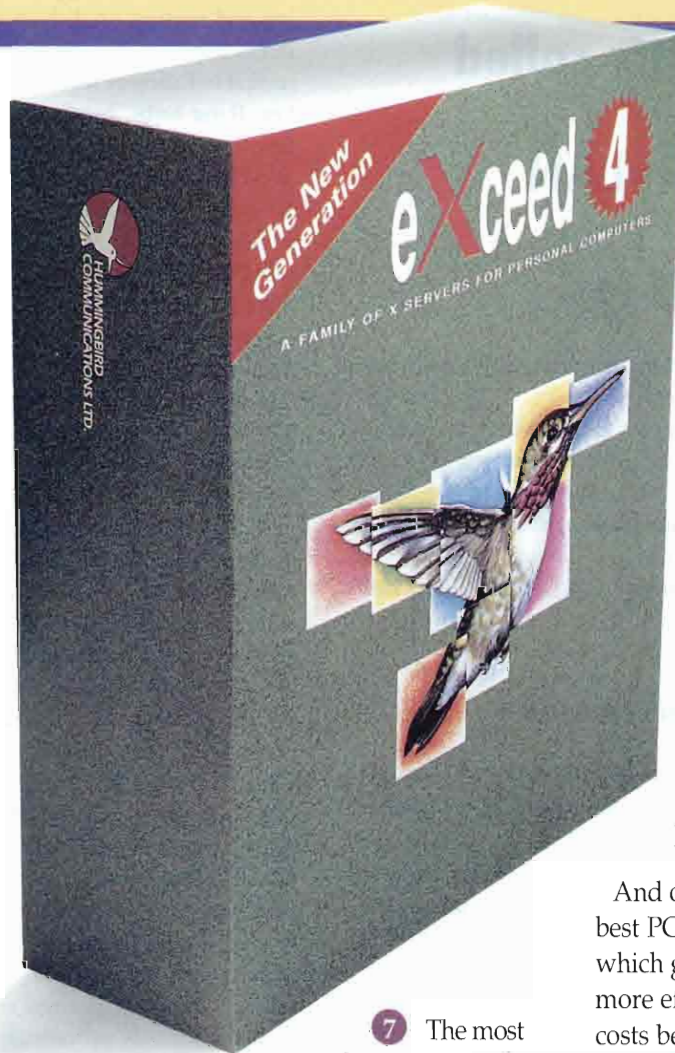
New eXceed 4 is different, because to us, PC-to-UNIX integration is more than just file and print services, and more than just X-terminal emulation. It means delivering the power of the network to your PC's desktop, and eXceed 4 for Windows is the only integrated suite of PC-to-UNIX software built to do just that.

*Listen to what's in eXceed 4 for Windows:*

- 1 A performance optimized 32-bit PC X server.
- 2 Simple one-step, no-pain installation, making eXceed 4 easier to use than anything you've seen before.
- 3 Built-in eXceed BASIC, so you can write scripts to customize and automate repetitive tasks.
- 4 VxD-based TCP/IP network software.
- 5 Dial-up X, point-and-click Windows access to X over standard telephone lines.



- 6 A proven and powerful X Development Kit that lets you easily develop X clients.



keyboard mapper, transport activity monitor, Xtrace debugger and Launch Pad.

In fact, everything you've asked for - for administration, for use, for development - is included in new eXceed 4 for Windows.

*At Hummingbird, our goal in PC X server technology is to be either first...or first.*

Hummingbird was first to implement PC X servers for both DOS and Windows. We were first with Windows NT and OS/2, and first with Xpress, the fastest dial-up access to X over standard phone lines.

And once again we're first: With the best PC-to-UNIX connectivity package which gives you all you need to work more efficiently and control costs better.

- 7 The most advanced suite of Network Adminis-

tration tools in the industry. Tools that can drastically reduce the cost of maintaining PC-to-UNIX connectivity software.

*All that, plus ...*

Performance and productivity features such as Drag and Drop FTP, Telnet, VT320, Xperf-based performance maximizer, graphical

To find out more about the most advanced PC X SERVER you can buy today, call 1-905-470-1203. We'll show you why eXceed 4 for Windows is the first of a new generation.



**HUMMINGBIRD**  
Open the X-Window Wider.



2900 John Street, Markham, Ontario, Canada L3R 5G8 Tel: 1-905-470-1203 Fax: 1-905-470-1207  
in Europe: 37 rue de Verninot, 1202 Geneva, Switzerland Tel: (41) 22 733 18 58 Fax: (41) 22 733 64 03  
Offices in: Leeds, U.K. • Washington DC & Mountain View, USA

CIRCLE 155 ON READER CARD

# A new standard is on the way. It's called 100VG-AnyLAN networking.

tween the two "brouters." Expect to see more merging of these families as products become more capable.

A gateway is a way of linking two LANs where incompatible protocols are in use. The gateway converts one protocol to another — and is also called a protocol converter (see *Figure 3*). Converters or gateways are commonly used as links between E-mail systems or for terminal access.

A hub is a device that can establish links across several different systems in a star topology.

## HP MAKES ANOTHER STANDARDS MOVE

JUST WHEN YOU THOUGHT you'd found a market you might be able to understand for a minute or two, somebody goes and changes it. Yes, a new standard is on the way. It's called 100VG-AnyLAN networking, and it promises to dramatically increase capacity to 100 megabits per second while maintaining message-frame compatibility with 802.3 Ethernet 10Base-T and 802.5 Token Ring networks and cables. The standard is currently defined as IEEE 802.12.

Earlier this year, HP introduced a 15-port 100VG-AnyLAN hub and selectable 10 megabit, 10Base-T/100Mbit 100VG EISA and ISA adapter cards as part of HP's AdvanceStack network connectivity product line. These may be the first products to use the standard.

However, they are far from being the only new networking products out there. Here is a sampling of what is available in this highly competitive market:

### Bridges

- Cominet Inc. (Sunnyvale, Calif.) offers its EveryWare 160 ISDN bridge incorporating NT1 capability in a small unit for low-end users.
- HP's 100VG Bridge/SNMP module sells for \$1,495 and should be available next month.
- Apertus Technologies (Eden Prairie, Minn.) markets ez-BRIDGE Transact messaging and queuing middleware software to deliver transactions across multiplatform environments.

### Routers

- 3Com Corp. (Santa Clara, Calif.) earlier this year purchased Centrum Communications (San Jose, Calif.). CentrumRemote

3000 has been renamed AccessBuilder. The product provides network node emulation for remote routing of outlying users. AccessBuilder supports LAN-to-LAN concurrent bridging and routing on dial-up and leased lines. 3Com also produces SuperStack fault-tolerant routers, LinkBuilder FMS II stackable Ethernet hubs, LinkBuilder FMS TR stackable Token Ring hubs, NetBuilder Remote Office for remote office internetworking and LinkConverter an SNA-to-LAN/WAN converter.

- Brixton Systems Inc. (Cambridge, Mass.) offers a software router for WAN routing on a budget. The software uses UNIX or Windows NT on existing computers to link users.
- Data Race (San Antonio, Texas) sells its NETracer family of connect-on-demand multiprotocol Ethernet bridge/routers for branch office communications.
- Gandalf Technologies Inc. (Nepean, Ontario) produces its LANLine "i" Series of intelligent bridges and routers for remote office connections.
- HP offers AdvanceStack Router 650, a multiprotocol router designed for headquarters facilities of geographically dispersed companies. The product provides an aggregate speed of 100,000 packets per second and supports most standard networks. Fully configured for an entry-level system, including software, the product sells for \$12,000.
- HP cut the prices on its AdvanceStack branch routers, which now range from \$2,395 to \$5,195.
- Newport Systems Solutions (Newport Beach, Calif.) sells the LAN2LAN/MPR<sup>2</sup>, a multiprotocol router.
- Network Systems Corp. (Minneapolis, Minn.) offers the 6600 bridge-router family for bridging WAN links, while the 6200 branch office router and the 6300 regional office router support a range of protocols for tasks of varying sizes.
- Nupon Computing Corp. (Tustin, Calif.) offers its LTS Communications Server, a multiprotocol dial-up router that also services terminals, printers and modems on the network.
- Proteon Inc. (Westborough, Mass.) produces the CNX600 Bridging Router for mixed IBM and non-IBM networks, the DNX350 bridging router, Release 15 router software for its CNX and DNX routers, and OneVIEW Group Manager router configuration software.
- SCii Telecom a French-based company with U.S. offices at ISCOM (Riverdale, Md.) introduced its Translan NLM software, a NetWare multiprotocol router for ISDN.


### Hubs

- Cameo Communications Inc. (Nashua, N.H.) markets its UltraHub 1040 Integrated Local Bridge Hub for workgroups and departmental networks.
- Chipcom Corp. (Southborough, Mass.) offers its Oncore Switching System, a 17-slot, scalable, high-capacity switching hub for linking Ethernet, Token Ring and FDDI networks.
- Computer Network Technology Corp. (Maple Grove, Minn.) produces UltraNet high performance hubs.
- Fibronics International Inc. (Pembroke, Mass.) introduced two stackable hubs for Token Ring (FR9230 Token Ring Man-



# DATA GENERAL

## YOUR ONE SOURCE FOR CA-UNICENTER ON ALL UNIX AND PC LAN PLATFORMS

 Open



**Computer Associates and  
Data General join forces to  
distribute, resell, and support  
CA-UNICENTER worldwide!**

Data General's industry-leading AViiON® enterprise servers, complemented by CA-UNICENTER®, bring mainframe-level systems management to UNIX® data center operations. CA-UNICENTER enables data center administrators to easily and efficiently manage storage, production control, security and resource accounting.

With this announcement, Data General also becomes a certified consulting and training partner for CA-UNICENTER. This certification allows Data General to provide single source sales and support to our mutual customers.

To get you started, we are offering a 30-day free try-buy program for CA-UNICENTER for AViiON Systems.

For further information, call 1-800-DATA GEN.

**COMPUTER®  
ASSOCIATES**  
*Software superior by design.*

 **Data General**  
**The Open Systems Experts**

AViiON is a registered trademark of Data General Corporation. Computer Associates and CA-UNICENTER are registered trademarks of Computer Associates International, Inc. UNIX is a registered trademark of UNIX System Laboratories, Inc. Copyright © Data General Corporation 1994.

CIRCLE 254 ON READER CARD

## Hub-Bub, Bub

- agement Unit) and Ethernet (FER2061 Stackable Ethernet Hub) networks. The hubs can be connected to create expanding networks. Fibronics also sells GigaHUB, a 12 giga bit per second, ATM-ready, intelligent switching hub.
- HP's AdvanceStack 100VG-AnyLAN 15-port hub lists for \$3,750.
  - Linksys (Irvine, Calif.) offers a Workgroup Hub that supports eight twisted-pair ports, one BNC connection, and can be uplinked to other hubs and workstations.
  - Network Peripherals Inc. (Milpitas, Calif.) produces the EIFO (Ethernet In, FDDI Out) client-server switching hub, designed to speed network communications without abandoning existing Ethernet investments.
  - NetWorth Inc. (Irving, Texas) makes the Series 2000 Snapable Hub, an economical line of stackable hubs.
  - Pinacl Communications Inc. (Elmsford, N.Y.) offers Maxi-Hub Dataguard high-performance stackable hubs.
  - Wingra Technologies Inc. (Madison, Wis.) offers Missive, a VAX-based, software-only intelligent messaging hub that reformats and transfers E-mail and file attachments.

### Other Connectivity Devices

- I-Kinetics Inc. (Cambridge, Mass.) provides I-Bridge Adapter to allow cross-platform automation between Windows and

UNIX applications. I-Bridge agents can control execution of a UNIX program and then transport the output to a Windows application. Windows users can continue to work in Windows while the agent executes.

- Netlink Inc. (Raleigh, N.C.) provides a line of SDLC Link Servers for integrating SNA networks with LAN/WAN internetworks, and Frame Relay Access Node for SNA links over frame relay nets.
- Symplex Communications (Ann Arbor, Mich.) markets its Direct Route family of WAN access switches.
- Telco Systems Inc. Magnalink Communications (Norwood, Mass.) provides 3000 and 4000 series Compression Bridge/Routers for connecting LANs over WANs. The company also sells series 5000 LAN/WAN Optimizers to increase the throughput or a bridge or router.

To maximize your LANs, you must network your network. So, now that you've finally figured out LANs, the next bridge is waiting to be crossed. And internetworking is waiting on the other side.

Would you like to continue to see articles on this topic?

Circle on reader card  
yes 348 no 347

### COMPANIES MENTIONED IN THIS ARTICLE

Apertus Technologies Inc.  
7275 Flying Cloud Dr.  
Eden Prairie, MN 55344  
(612) 828-0300  
CIRCLE 335 ON READER CARD

Brixton Systems Inc.  
185 Alewife Brook Pkwy.  
Ste. 4200  
Cambridge, MA 02138  
(617) 876-5359  
CIRCLE 334 ON READER CARD

Cameo Communications Inc.  
71 Spitbrook Rd.  
Nashua, NH 03060  
(603) 888-8869  
CIRCLE 333 ON READER CARD

Chipcom Corp.  
118 Turnpike Rd.  
Southborough, MA 01772  
(508) 460-8900  
CIRCLE 332 ON READER CARD

Combinet Inc.  
33 El Camino Real  
Sunnyvale, CA 94087  
(408) 522-9020  
CIRCLE 331 ON READER CARD

Computer Network Technology Corp.  
6500 Wedgewood Dr.  
Maple Grove, MN 55311-3640  
(612) 550-8000  
CIRCLE 330 ON READER CARD

Data Race  
11550 IH10 W.  
Ste. 395  
San Antonio, TX 78230  
(512) 558-1900  
CIRCLE 329 ON READER CARD

Fibronics Int'l. Inc.  
33 Riverside Dr.  
Pembroke, MA 02359  
(617) 826-0099  
CIRCLE 328 ON READER CARD

Gandalf Technologies Inc.  
130 Colonnade Rd. S.  
Nepean, ON K2E 7M4  
(613) 723-6500  
CIRCLE 327 ON READER CARD

I-Kinetics Inc.  
19 Bishop Allen Dr.  
Cambridge, MA 02139  
(617) 661-8181  
CIRCLE 326 ON READER CARD

Linksys  
16811A Millikan Ave.  
Irvine, CA 92714  
(714) 261-1288  
CIRCLE 314 ON READER CARD

Netlink Inc.  
3214 Spring Forest Rd.  
Raleigh, NC 27604  
(919) 878-8612  
CIRCLE 313 ON READER CARD

Network Peripherals Inc.  
1371 McCarthy Blvd.  
Milpitas, CA 95035  
(408) 321-7300  
CIRCLE 312 ON READER CARD

Network Systems Corp.  
7600 Boone Ave. N.  
Minneapolis, MN 55428  
(612) 424-4888  
CIRCLE 311 ON READER CARD

NetWorth Inc.  
8404 Esters Blvd.  
Irving, TX 75063  
(214) 929-1700  
CIRCLE 450 ON READER CARD

Newport Systems Solutions  
4019 Westerly Place  
Ste. 103  
Newport Beach, CA 92660  
(714) 752-1511  
CIRCLE 449 ON READER CARD

Nupon Computing Corp.  
1391 Warner Ave.  
Ste. A  
Tustin, CA 92680  
(714) 258-8622  
CIRCLE 448 ON READER CARD

Pinacl Communications Inc.  
Cross Westchester Executive Park  
400 Executive Blvd.  
Elmsford, NY 10523  
(914) 345-8155  
CIRCLE 447 ON READER CARD

Proteon Inc.  
9 Technology Dr.  
Westborough, MA 01581  
(508) 898-2800  
CIRCLE 446 ON READER CARD

SCii Telecom  
c/o ISCOM Inc.  
6103 Baltimore Ave.  
Ste. 205  
Riverdale, MD 20737  
(301) 779-1368  
CIRCLE 445 ON READER CARD

Symplex Communications  
5 Research Dr.  
Ann Arbor, MI 48103  
(313) 995-1555  
CIRCLE 444 ON READER CARD

Telco Systems Inc.  
Magnalink Communications  
63 Nahatan St.  
Norwood, MA 02062  
(617) 255-9400  
CIRCLE 443 ON READER CARD

3Com Corp.  
5400 Bayfront Plaza  
Santa Clara, CA 95052  
(408) 764-5000  
CIRCLE 442 ON READER CARD

Wingra Technologies Inc.  
450 Science Dr.  
Madison, WI 53711  
(608) 238-4454  
CIRCLE 440 ON READER CARD



# There Is A Better Way To Access Your Data



## ***VISIMAGE — The Right Tool for Report Writing Won't Hammer Your System***

Visimage, the original client-server report writer in the HP market, keeps getting better. Visimage now provides a Microsoft® Windows™ interface. Familiar mouse-driven icons empower users to select, report and download data in a controlled environment. Visimage is easy to set up and easy to use. Advanced reporting capabilities assure that users never outgrow the power of Visimage.

Our unique client-server technology minimizes resource demand through serial or network connections. Data remains on the host server, maintaining security and accuracy while eliminating potential network overloads. Users can schedule Visimage reports on the host that run independently of their PCs. Efficient data retrieval can be further enhanced by integration with HP third party indexing tools.

Choose Visimage, the right tool to access IMAGE, IMAGE/SQL, ALLBASE, ORACLE®, KSAM, C-ISAM® and flat files on your HP 3000 or HP 9000 computer.

HP, HP 3000, HP 9000, IMAGE, IMAGE/SQL, ALLBASE, and KSAM are products of Hewlett-Packard Company. MS-DOS is a registered trademark and Windows is a trademark of Microsoft Corporation. ORACLE is a registered trademark of Oracle Corporation. C-ISAM is a registered trademark of Informix Software, Inc. VISIMAGE PC and Visimage for Windows are trademarks of ARES, France.

***Call now for your FREE  
Windows™ or MS-DOS®  
demo diskette!***



**VITAL**  
*Soft*  
INCORPORATED

**1-800-VITALSOFT**

1153 Bordeaux Drive, Suite 101  
Sunnyvale, CA 94089-1210 Fax: (408) 745-6681

**CIRCLE 143 ON READER CARD**

# Nothing More Than Memory

**Despite Price Fluctuations, The Time  
To Upgrade Your Memory Is Now**

Lynn Haber

---

**I**t may not be the sexiest or hottest computer-related technology of the moment. But memory for the HP 3000 and HP 9000 computer systems is a much sought after product, and third-party suppliers are working hard to satisfy customer demand while overall product availability remains constrained.

“The big question being asked today is how to get more memory and how to get it cheaper,” says Victor De Dios, president of De Dios & Associates (Newark, Calif.) a research firm that focuses on the memory market.

According to industry players, growth in the memory market in general is good, with HP shaping up to be one of the fastest growing segments of the business. “HP users have more third-party sources to turn to compared to other computer users, because HP has more standard modules making it an easier product line to support,” says De Dios.



About a dozen or more third-party vendors cater to the HP market with Dataram Corp. (Princeton, N.J.) and Kingston Technology Corp. (Fountain Valley, Calif.) dominating the marketplace garnering 35 percent and 25 percent marketshare, respectively.

In 1994, De Dios estimates that 84 million MB of DRAM will be shipped to the workstation market compared to 66 million MB in 1993. By 1995, DRAM shipments may hit 103 million MB.

The most noticeable trend in today's memory market is the move to 16 megabit DRAM from 4 megabit DRAM. "The switch over started last fall and we expect the cross over to occur later this year, as more capacity comes on line," says Dan Carson, memory product manager at Dataram. Not only do users get more capacity in a smaller package, a 25 percent reduction in DRAM packaging, but the 16 megabit products require less power consumption.

While this time last year, there was a lot of upheaval in the memory market and 4 megabit DRAM was in short supply, resellers like Concorde Technologies Inc. (San Diego, Calif.) report that as supply for 16 megabit DRAM picks up, users will see the market stabilize and prices decline.

"It used to be that the average cost per megabyte was around \$1 — so 32 MB DRAM was \$3,200. In some cases, today,

we're seeing a street cost per megabyte of about 75 cents," says James Dunham, workstation product manager at Concorde.

Vincent Sandoval, director of sales at Martech Inc. (Alhambra, Calif.) reports that a 32 MB card, a popular memory configuration for HP's 9000/700 series of workstations, is \$1,550, down from \$1,650 at the beginning of the year.

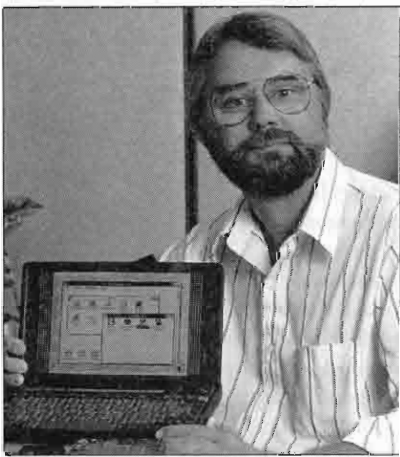
While chip manufacturers are gearing up production of 16 megabit DRAM, Ron Bohn, senior industry analyst in the semiconductor group at Dataquest Inc. (San Jose, Calif.) expects supply to remain tight for the remainder of the year.

Suppliers of memory report that over the last 12 months, customers are more willing to add memory to maximize system performance as prices decline. "It used to be that people would underconfigure their systems, but today, systems tend to be configured with memory beyond what's standard to gain better response times," says Mike Robert, president and CEO of Datasys Computer Corp. (Dallas, Texas).

Both Robert and Carson agree that users often buy their systems from HP with minimum memory and turn to third-party suppliers for lower cost, and better support and service. "Most HP customers have become educated and believe that there is no difference between buying memory cards from a reputable third-party vendor versus buying from HP. And they don't want to pay a 30 percent to 40 percent premium to HP," says Robert.

## "Hewlett-Packard Co. chose DynaComm® as a *realistic* terminal emulation solution for the OmniBook."

"We needed several different terminal emulations in the OmniBook but couldn't afford the footprint or cost of multiple packages. FutureSoft delivers a comprehensive solution at a responsive price."



JERRY ERICKSON  
*R & D*  
Hewlett-Packard Co.

At FutureSoft, we know these are serious considerations for your users' desktop PCs, as well as subnotebooks like the OmniBook.

DynaComm delivers:

- Extensive emulation support and network connectivity in one package
- Essential tools, including powerful scripting, full DDE support and graphical dialog and toolbar editors
- Pricing that reflects real value

**1-800-989-8908**

Call your account manager  
for more information!

 **FutureSoft.**

12012 Wickchester Ln, Suite 600  
Houston, TX 77079  
713.496.9400 • 713.496.1090 FAX

Windows is a trademark and Microsoft is a registered trademark of Microsoft Corporation. DynaComm and FutureSoft are registered trademarks of Future Soft Engineering, Inc. Hewlett-Packard is a registered trademark of Hewlett-Packard Co.

## Nothing More Than Memory

What customers are looking for is value—good price, good technical service and good product warranties. “Everyone has a limited budget and they’re looking to get the best value they can find to enhance their machines and their productivity,” says Dunham.

At Kingston, memory sales to the HP user community is the company’s second largest market, accounting for \$1 million dollars in revenue a month, according to John Sutherland, manager of the workstation products group at Kingston. What’s hot on HP’s 9000/700 series, he says, are 32 MB kits followed by 64 MB and 128 MB kits.

Carolyn Aliotta, marketing and communications manager at Camintonn Corp. (Irvine, Calif.) says that the sale of 32 MB and 64 MB kits are in great demand for users of HP 9000 models 720, 715 and 705. Camintonn’s new products include 8 MB, 16 MB, 32 MB and 64 MB kits for the model 712. “New 128 MB kits also are available for HP 9000 models 735 and 755,” she says.

Also, a user’s increasing appetite for workstation RAM is being driven by higher performance systems, RISC computing power and 3D accelerated graphics applications, says Bohn. At the high-end, third-party vendors report a demand for 128 MB and 256 MB configurations.

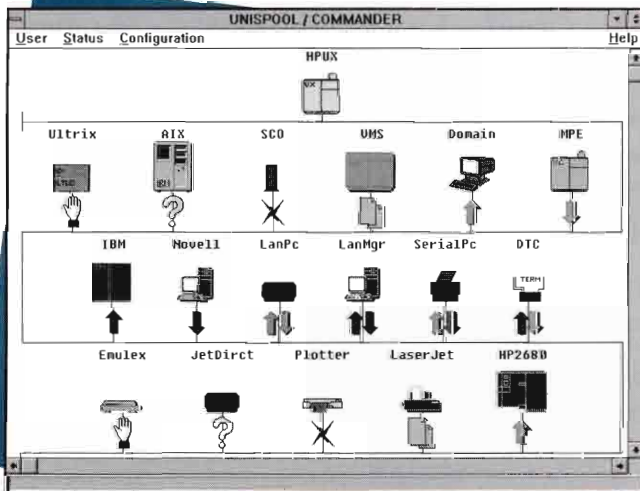
A popular sale to users of HP 9000/800 series G and H servers are 32 MB and 64 MB boards. Dataram’s Carson reports that RAM for the new E series has been a hot seller, as well. Kelly Computer Systems Inc. (Mountain View, Calif.) recently dropped the price of its 128 MB kits, popular with the F, G, H and I servers, from \$12,800 to \$6,400 which reflects the demand for these models.

As the number of users on a server increases — regardless of whether it is an application, file or compute server — so do memory requirements. Depending upon the number of users and the type of usage, server RAM can rise over 200 MB to half a gigabyte.

Vendors like Martech, Kingston and Dataram report that although memory sales to users of HP 3000 servers are well below that of the workstations, products are available and that configurations of 128 MB and above are most popular. However, Cathy Beier, director of marketing and communications at Kelly, notes an upturn in demand for HP 3000 Series 9x8 servers.

Third-party vendors report that users typically purchase RAM at three points in a product’s lifecycle: when they first purchase the product; midlife, as new clients are added to the server or as additional applications are run on the workstation;

## Single-Point Control of Printing... UNISPOOL/Commander



Only **UNISPOOL** delivers instant status of all print resources with complete change control. Manage the number of copies to print, spoolfile status and device configurations — all from your Windows PC fr...

- |                                 |                                      |                                     |
|---------------------------------|--------------------------------------|-------------------------------------|
| <input type="checkbox"/> MPE    | <input type="checkbox"/> Solaris 2.0 | <input type="checkbox"/> Ultrix     |
| <input type="checkbox"/> MPE/iX | <input type="checkbox"/> SCO-UNIX    | <input type="checkbox"/> VMS        |
| <input type="checkbox"/> HP-UX  | <input type="checkbox"/> MS LAN Mgr  | <input type="checkbox"/> OSF1/Alpha |
| <input type="checkbox"/> AIX    | <input type="checkbox"/> Novell      |                                     |

With standard features like...

- ✓ Unlimited print devices
- ✓ Bi-directional transfer to PC's
- ✓ Bi-directional transfer from hosts and PC Servers
- ✓ LAN and terminal server printer support
- ✓ Enhanced spoolfile selection criteria
- ✓ Automatic archiving based on spoolfile criteria
- ✓ Preview & print spoolfile selections
- ✓ Automatically route spoolfiles
- ✓ Automatic load sharing among printers
- ✓ NLM for Novell 3.11 and up... eliminate the gateway and much more...

**CALL FOR A FREE DEMO TODAY!**

**1-800-5-API-USA**



*International*  
Simply Automation

API International, Inc.  
P.O. Box 91027  
Austin, TX 78709



and at the end of the product's lifecycle as a final attempt to squeeze more juice out of the system before having to shell out money for a new one.

Having gained a new confidence in third-party RAM suppliers, customers are taking their business to those vendors that can demonstrate longevity in the marketplace, stability, quality service and support, and adherence to stringent manufacturing and testing procedures.

Taking a look down memory lane, market forces are developing a demand for specialty DRAM, such as synchronous DRAM, graphics DRAM and high-speed cache DRAM. "Expect to see the trend toward specialty DRAM and away from traditional standard RAM evolve over the next few years," says Bohn. The trend toward specialty DRAM is driven by the fact that system performance requirements won't be able to match system processing speeds, he says.

Despite price fluctuations, RAM pricing has come down and industry watchers agree that the opportunity to upgrade looks good. —Lynn Haber is a freelance writer specializing in computer and communications technology, based in Boston, Mass.

Would you like to continue to see articles on this topic?  
 Circle on reader card  
 yes 350 no 349

### COMPANIES MENTIONED IN THIS ARTICLE

Camintonn Corp.  
 22 Morgan  
 Irvine, CA 92718  
 (714) 454-1500  
**CIRCLE 344 ON READER CARD**

De Dios & Associates  
 39899 Valentine Dr.  
 Ste. 200  
 Newark, CA 94560  
 (510) 490-2007  
**CIRCLE 339 ON READER CARD**

Concorde Technologies Inc.  
 6370 Lusk Blvd.  
 Ste. F100  
 San Diego, CA 95121  
 (800) 359-0282  
**CIRCLE 343 ON READER CARD**

Kelly Computer Corp.  
 139 Whisman Rd.  
 Mountain View, CA 94043  
 (415) 960-1010  
**CIRCLE 338 ON READER CARD**

Dataquest Inc.  
 1290 Ridder Park Dr.  
 San Jose, CA 95131  
 (408) 437-8000  
**CIRCLE 342 ON READER CARD**

Kingston Technology Corp.  
 17600 Newhope St.  
 Fountain Valley, CA 92708  
 (714) 435-2600  
**CIRCLE 337 ON READER CARD**

Dataram Corp.  
 P.O. Box 7528  
 Princeton, NJ 08543  
 (609) 799-0071  
**CIRCLE 341 ON READER CARD**

Martech  
 1151 W. Valley Blvd.  
 Alhambra, CA 91803-2493  
 (800) 582-3555  
**CIRCLE 336 ON READER CARD**

Datsys Computer  
 4125 Keller Springs Rd.  
 Dallas, TX 75244  
 (214) 931-9195  
**CIRCLE 340 ON READER CARD**

# Vantage — Distributed Network Management Made Simple



- Automation
- Remote Access
- Real-time Remote Control
- Enterprise-wide Job Streams
- Automated Software Distribution and much more for ...

- UNIX Systems
- Proprietary Systems
- Servers
- Communications Devices and many more, all from your ...

- Palm Top
- Personal Computer
- Workstation

**Vantage - all this and more.**

**1-800-5 API USA**



International  
 Simply Automation

API International  
 P. O. Box 91027  
 Austin, TX 78709

**CIRCLE 286 ON READER CARD**

# ODBC: Not Just For Windows

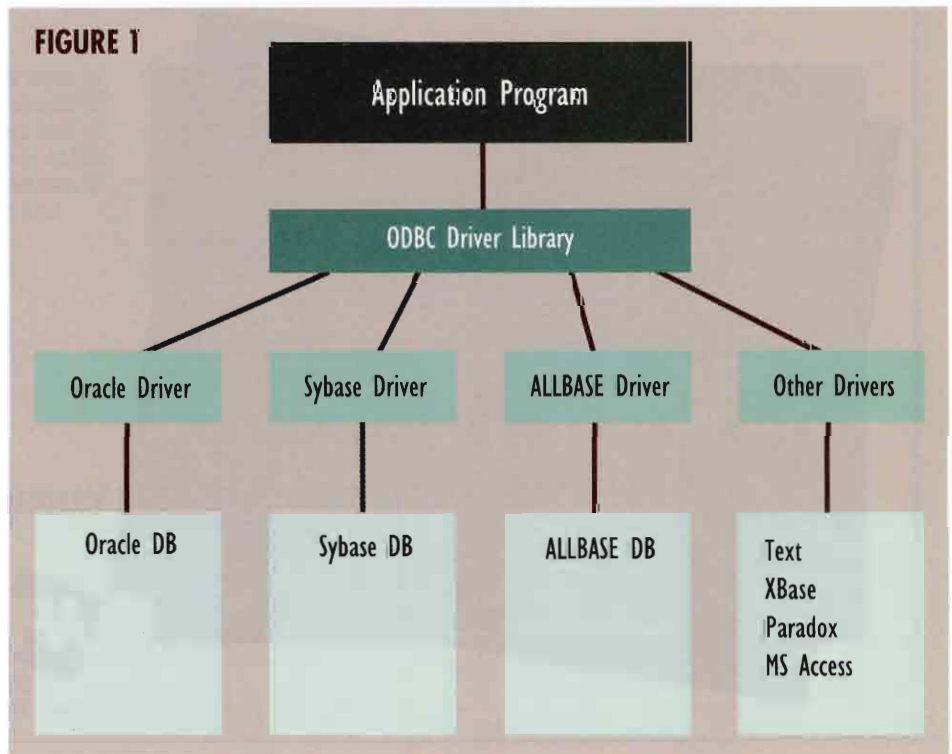
This month we're going to discuss Microsoft's Open

Database Connectivity (ODBC). You might wonder why, as an HP-UX user, you should be interested in a Microsoft standard — after all, Microsoft has continued to shun the UNIX marketplace in favor of its own operating system and application software.

Consider for a moment what ODBC really is: the Microsoft's PC implementation of the SQL Access Group's (SAG) proposed standard for database connectivity. In fact, Microsoft's ODBC Release 2.0 is identical to the standard proposed by SAG and X/Open. If you use HP-UX and virtually any RDBMS, you should know about ODBC.

Years ago, IBM created an entire industry when it introduced Structured Query Language (SQL) as a way to create, add, manipulate and remove data from large relational databases. The existence of such a standard language for the access of structured data created an opportunity

FIGURE 1





# By using SQL, developers could write high-level applications that could theoretically be transported to any of the available SQL database environments.

for companies like Sybase, Oracle, Informix and Ingres. SQL also is a driving force behind ALLBASE, HP's RDBMS software. By using SQL, developers could write high-level applications that could theoretically be transported to any of the available SQL database environments.

## The Problem With SQL

The problem with SQL was that, as you might expect, each RDBMS vendor en-

hanced the SQL language to enhance their implementation. And, if that wasn't bad enough, the RDBMS vendors began supporting embedded SQL, which provided better performance by embedding proprietary calls to each specific RDBMS server. Thus, software vendors and major accounts who wanted performance in their high-end database applications had to sacrifice compatibility for added speed.

SAG, an industry standards organiza-

tion with virtually all major database vendors among its membership, has proposed to standardize the way vendors support embedded SQL. Their proposed API provides a number of features:

- Access to virtually any data source
- Base level standard SQL grammar
- Standard Error Handling
- Standard logon and security features
- Portable to virtually any platform

Microsoft, a member of SAG, recognized how useful a standard call-level interface (CLI) would be to PC programmers who need to access remote data from any number of sources. By embracing SAG's proposed standard, Microsoft has made the development of PC-based client software much easier than it would have otherwise been. In response to Microsoft's support of the standard, virtually every relational database supplier including Sybase, Oracle and HP have announced plans to support client-server development to programmers through ODBC.

# HERE'S YOUR SOLUTION!

Quality products at affordable prices for  
**HEWLETT-PACKARD/APOLLO®**

Workstations,  
Peripherals and Upgrades

- NEW and REFURBISHED
- Repairs
- 100% Customer Satisfaction
- Free Technical Support
- Immediate Delivery



**CMI**

Computer Marketing International, Inc.™

85 Flagship Drive  
No. Andover, MA 01845 USA

Tel: 800-497-4264  
508-687-3700

Fax: 508-689-2031

Int'l. Fax: 508-687-4395



## GET THE NEXT ALLBASE 4GL VERSION TODAY

"In a rapidly changing world of information technology, TODAY keeps us ahead with minimal application code changes. We run an integrated application on multiple platforms with no changes whatsoever. TODAY has lived up to our expectations."

Mr. H. Pflimlin  
Chief Financial Officer  
Dunham & Co. Ltd.  
Freiburg

"TODAY is a great 4GL. It allows us to take advantage of client/server technology without changes to our applications. It provides us with productivity unmatched by any other product we've used."

Andy Soiko  
Technical Operations Manager  
GenDura Insurance Services, Inc.  
San Jose, California

"Toward the Open Systems Environment, TODAY Client/Server 4GL is the best choice of Application Development Tool. It helped us to migrate in a most smooth and reliable way."

Mr. Chen  
MIS Manager  
Yang-Ming Marine Transport Corp.  
Taipei, Taiwan

## Future-Proof your Applications with TODAY Client/Server 4GL

As you move to Client/Server, there are several questions to confront regarding money, toolkits and learning curves, to name a few:

- How do I leverage the already large investment in my legacy applications? (Allbase, Image, MPE, etc.)
- What new development toolkits will be compatible with my present tools and RDBMSs?
- How can I keep fixed costs down, bring PC pricing to a mainframe shop and reduce deployment costs over time?

TODAY can migrate your Allbase applications to GUI Client/Server. Allbase 4GL was an older version of the TODAY 4GL. So your development staff is already trained.



For a free white paper call:  
**800-TODAY-4GL**

CP Software Group/TODAY Systems World Headquarters 715 Gutter St. Folsom, CA 95630 Tel: (916) 985-4445 Fax: (916) 985-3557  
Europe: Tel: +44-81-791 1842 Fax: +44-81-791 1845 Australia/New Zealand & Asia: Tel: +61-3-243 2200 Fax: +61-3-243 2207  
TODAY is a trademark of TODAY Systems, Inc. All other trademarks are owned by their respective companies.

**ODBC makes no assumptions about or demands on the type of data connection, the network or the file format.**

*Thanks to Harmonizer, over 1400 Aldon customers are humming a new tune about installing new packaged software releases.*

# A classic from the Aldon repertoire. Harmonizer.

Harmonizer allows you to make modifications to your software applications and still take advantage of new releases.

In fact, Harmonizer can save you 60-80% of the time you now spend putting up new releases.

Harmonizer identifies and reports all changes made by you and by the vendor on a new release, then merges your changes with the new release to create new production versions of your programs. It's that simple.



**ALDON**<sup>®</sup>  
The Art of Change Management

**Aldon Computer Group**  
401 15th Street  
Oakland, California 94612  
(510) 839-3535  
(800) 825-5858  
FAX: (510) 839-2894

And the elegant Harmonizer user interface makes it easy to learn and use.

Conduct your own examination —for a free software trial, call toll free, 1-800-825-5858.

CIRCLE 163 ON READER CARD

## Data Sources

While the SAG CLI is intended primarily for relational database access, there is nothing inherent in the standard to prevent the use of the standard to access virtually any source of data, from ISAM and proprietary database files to flat ASCII text files and tables. As *Figure 1* shows, the application makes calls using the standard 53 call API. Each vendor then provides the ODBC driver code to access their particular database engine or file format.

Note that ODBC makes no assumptions about or demands on the type of data connection, the network or the file format. All of these implementation details are implemented in the respective drivers. SQL Access provides three levels of implementation compatibility so that vendors can access specific enhancements in their implementation while maintaining virtually universal data access at lower levels.

## THE TOTAL SOLUTION

*sales, service, support*

- ◀ On-time service, on-line equipment—backed by the GE name.
  - Black River takes the risk and worry out of ordering, implementation and maintenance. You're assured:
    - Full line of new and previously owned, refurbished 9000, 3000 and 1000.
    - Technically trained maintenance team.
    - Free installation with GE maintenance package.
    - Nationwide service backed by GE.
- Call 216-365-9950 or fax 216-365-3916 for more information.



GE Computer Service

**BLACK RIVER**  
COMPUTERS

THE TOTAL SOLUTION  
*sales, service, support*

7630 RACE ROAD • NORTH RIDGEVILLE, OHIO 44039  
216-365-9950

CIRCLE 171 ON READER CARD



## Simple Access

To give you an idea of what it takes to use ODBC to access data, let's look at a brief example shown in *Figure 2*. I've written the example in a BASIC-like language which you can translate to whatever language you like to use.

Note that this is not working code — I've omitted a number of required parameters. Still, you can see that it's not too difficult to write a quick program to access information, regardless of the actual source of the data. ODBC, while usually presented as a Windows solution, is really there to make your job easier on HP-UX.

*Kehoe's Internet address:*  
*kehoe@cardinal.com*

Would you like to continue to see articles on this topic?  
 Circle on reader card  
 yes 306 no 305

### FIGURE 2

Sample ODBC Program

```

rc = SQLAllocEnv(hEnv);           // Allocate an environment handle
If (rc != SQL_SUCCESS) then      // If we couldn't get an environment, quit
    end;
rc = SQLAllocConnect(hEnv, hDbc); // Allocate a connection to a db control block
If (rc != SQL_SUCCESS) then     // If we can't get allocate a connection, quit
    end;
sConn = "DSN=CorpDB;UID=mbk;PWD=miles;DATABASE=employees";
// Prepare to connect to data source CorpDB, using user id mbk, and password miles.
rc = SQLDriverConnect(hDbc, hWnd, sConn...);
rc = SQLAllocStmt(hDbc, hStmt);  // Allocate memory for an SQL statement
// And define the statement to execute
hSQL = "SELECT * FROM Employee_Mst WHERE Yes_Served > 5"
rc = SQLExecDirect(hStmt, hSQL, ...); // Execute the statement and wait for completion
rc = SQLNumResultCols(hStmt, iNCols); // Find out how many columns (fields) exist
// in this table
// Now loop as long as there are valid rows to fetch
While SQLFetch(hStmt) == SQL_SUCCESS
    sRetStuff = "";
    For i = 1 to iNCols           // For every column get the data
        rc = SQLGetData(hStmt, i, 1, sBuff...);
        sRetStuff = sRetStuff + sBuff // append it to previous columns
    Next i                       // from the same row
    Print sRetStuff              // Show all columns fetched
End While
    
```

**OUR 14th YEAR**


# QUALITY HP WORKSTATIONS - WITHOUT THE HP PRICE

**RENT · LEASE · BUY**

Immediate Delivery On Most Items

- 700 SERIES: Models 710, 715/50, 715/75, 735, 735/125, 712/60, 712/80
- X-STATIONS: ENVIZEX, C270X
- All 300, 400T and 400E Series
- Memory, Features & Disc Upgrades for all Workstations
- CPU Upgrades: 715/50, 715/75, 735, 735/125, 425, 380, 360

*More Than 1500 Satisfied Customers Throughout The USA and Worldwide*



For technical info, specs or pricing call Mordy or Carol

**C.S.U. Industries, Inc.**  
 207 Rockaway Turnpike, Lawrence, NY 11559  
 (516) 239-4310 FAX (516) 239-8374

CIRCLE 213 ON READER CARD

**Special HP Price Offer**



**ISLAND OFFICE LEADER IN UNIX, BEST FOR HP**

"IslandPresents, from Island Software, is a presentation software package which provides you with a palette of color and form that you can apply in a variety of ways to create slides and overhead presentations on HP 9000/700 and 800 workstations."  
HP Professional November 1993

"With its new version of Write, Draw & Paint, Island Software has capitalized on its maturity and provides a well-crafted product and exceptional interface."  
Unix World September 1993

**Special Price 80% savings \$280 per user!**  
\*available in 10 packages includes: Write, Draw, Paint and 1 yr. of support (regular price \$10,000) offer expires 9/30/94

**Island Software Delivers For HP**

IslandOffice is a proven leader in the UNIX productivity market. Why? Because it delivers what you need, when they need it, and continues delivering through enhancements, updates, upgrades, training programs, customer support and more.

IslandOffice is Island Software's easy-to-use GUI productivity applications—Island Write, Draw & Paint, IslandPresents and IslandCalc—bundled into one cost-saving package.

IslandWrite, Draw & Paint is a word processing, desktop publishing, and graphics application that includes IslandTable, a table editor, and IslandEquation, an equation editor.

IslandPresents is a presentation and business graphics program that includes IslandChart.

IslandCalc is a graphical spreadsheet program which lets users create spreadsheets and 3D business graphics.

IslandOffice is available for HP 9000 Series 700 and 800 for a special NetPak price.

Call now for more information:  
**800-255-4499 ext. 2603**



Island Software Corporation 4000 Genco Center Drive San Rafael, CA 94903 Tel: (415) 491-1000 (800) 255-4499 Fax: (415) 472-0335 © 1994 Island Software. All rights reserved.

CIRCLE 260 ON READER CARD

# Year Of The OS At HP

This year promises to be a good one for HP 3000 users,

whether MPE/V or MPE/iX. Release 3P of MPE/V has been on the street for about a month. Release 3P continues the Software Technology Division's (SWT) commitment to provide functionality enhancements for MPE/V as long as there are enough users to support the effort.

Release 5.0 of MPE/iX is available now as a "pull" release. The general distribution "push" release is scheduled for this fall. Release 5.0 contains full POSIX.1 and POSIX.2 support and a host of additions to the core OS.

## OLD DOGS, NEW TRICKS

Release 3P of MPE/V, a "platform" release sent to all users on support, combines enhancements from limited distribution releases 30 and 31, and adds a few extras. Among the features:

EDITOR/3000 includes a REDO facility and supports command entry through the INFO string. The FIND command has a new range specification and KEEP automatically passes security attributes from the TEXT file to the KEEP file.

The MPE/V spooler now supports the SPSAVE feature of MPE/iX. This allows users to specify that a copy of a spool file

is to be saved after the spool file has finished printing.

SPOOK5 has been enhanced to have a full HELP facility as well as a REDO facility. The FIND command has been enhanced and line numbers can be suppressed when using the LIST command. ALTER and SHOW support the new SPSAVE feature of the spooler.

LISTF supports options -3, 3, 4 and 6 from MPE/iX. The CHGROUP command has been added to MPE/V, allowing users to change logon group without logging off and on again. DELETEVAR is a new command for MPE/V that will delete JCWs for a particular job or session (yeah!). And, beating MPE/iX market, PURGE now supports wildcards.

The ALTACCT, ALTGROUP and ALTUSER commands have been enhanced to allow for the addition or subtraction of capabilities. ALTJOB now can alter the attributes of waiting or scheduled jobs. And last, but certainly not least, with Release 3P, TurboIMAGE/V now supports Critical Item Update.

## NEW DOGS, NEW TRICKS

With fewer than 300 MPE/iX 4.5 tapes (introducing POSIX and the HFS) distributed, most HP 3000 customers have been clearly underwhelmed by POSIX. This, even though they may accept the twin rationales for POSIX: standards attract new business and encourage the porting of additional applications to the HP 3000.

For most MPE users, MPE/iX 5.0 will be their first exposure to POSIX and the



Hierarchical File System (HFS). To deal with this, HP has included a self-contained Computer-Based Training (CBT) module on managing the HFS.

MPE/iX 5.0 is more than POSIX and HFS. While POSIX is needed to attract new customers, according to George Stachnik, product manager for MPE/iX, existing customers appreciate the HP 3000's high availability and reliability for its "stayup-ability." In addition to fixes (STORE @.@.@ was "fixed" from 4.5 to "do what it always did"), new commands (SETCLOCK), new functionality for old commands (wild card PURGE) and new utilities such as SPIFF (a "better" SPOOK for the NM spooler), MPE/iX 5.0 now includes two features that improve its robust availability: Memory Page De-allocation (MPD) and Threshold Manager.

Both features are the result of extensive analysis of hardware and software aborts. Instrumentation was built into MPE/iX 4.0 to log and even capture the cause of most system failures. It was discovered that the leading cause of hardware aborts was the multibit memory error. MPD provides a mechanism for de-allocating any memory page (4 KB) containing a solid single-bit error, a soft failure re-

occurring within a 24-hour period or a double-bit error. In most cases, the system will continue running. On the software side, it was discovered that software-induced system aborts were typically caused by shortages of system resources.

Threshold Manager is a customizable utility that will provide notification when certain resources go critical (for example, exceed 90 percent of capacity) and optionally disallow non-HIPRI job and session logons until the resource usage falls below the critical level.

If all went according to plan, June 23 marked the first customer ship of MPE/iX 5.0 on new systems and to customers who have "pulled" the release. The fall "push" release is scheduled for added functionality (attend the TCU broadcast July 20 for details): a workload manager for scheduling; SETCOUNTER command for spoolfiles; and an LDEV 1 defrag tool to ensure sufficient disk space for updates.

Burke's Internet address:  
burke@cardinal.com

Would you like to continue to see articles on this topic?  
Circle on reader card  
yes 308 no 307

## Burke's Bits

This new addition to John P. Burke's Managing Your HP 3000 column provides you with a sampling of news and "alerts" in the HP 3000 arena, such as upcoming events, enhancements, additions and deletions to products.

- **ALERT!** The IMAGE/SQL upgrade program is scheduled to end July 31, 1994. This program gives TurboIMAGE/iX customers IMAGE/SQL with no upfront purchase cost, simply an increase in support fees.
- **ALERT!** A live video broadcast titled "HP 3000 Technology Close-Up: MPE/iX 5.0" is scheduled for July 20, 1994 at many HP sales offices in North America. If you have not yet signed up to attend (it is free), call the HP 3000 Customer Connection Hotline at 800-224-HP3K.
- The Third Party Indexing (TPI) interface for IMAGE/SQL is not part of MPE/iX 5.0. Not only is IMAGE/SQL unbundled from MPE for pricing and ordering purposes, it also is unbundled for update purposes. According to Jim Sartain, IMAGE/SQL lab manager, the TPI should be in an Express release before the end of the year.
- HP has significantly dropped the price of the AIF product with the widest potential appeal, AIF:OS from \$2,150 to a more manageable \$500. You still need C/iX or PASCAL/iX to make use of them.
- For the small- to mid-size customer, HP is formalizing, with an official announcement this month, a program that has quietly been in existence for some time: the Client-Server Integrators Program. Leads from a variety of sources (mostly existing HP 3000 users) are passed along to one of the program partners (17 to start) on a geographic basis.

## Your Work-Station...



- SUN Microsystems
- Hewlett-Packard
- Silicon Graphics
- IBM RS/6000
- DEC

SUN, Hewlett-Packard, Silicon Graphics, IBM and DEC are registered trademarks of their respective companies.



1-800-443-6699

CIRCLE 480 ON READER CARD

# *new* Products

## SOFTWARE

### CompuSci Releases PowerEdge Software

CompuSci Inc. released PowerEdge Power Monitoring Software for UNIX, Novell, OS/2 and VMS systems.

PowerEdge, a Power and Alarm Monitoring software, allows UPS users to monitor power quality and perform unattended shutdown of computer systems when necessary. PowerEdge NetServer for Novell and UNIX allows multiple computer systems to be supported by a single UPS, without any additional hardware.

PowerEdge supports HP-UX, Novell 3.11, 3.12 and 4.0, DEC VMS and Alpha OSF, IBM AIX, SCO UNIX, SunOS and Solaris, and OS/2. It also supports TCP/IP, NetWare and SNMP networks.

It optionally supports PowerEdge SmartSocket+ and SmartRoom to allow switching of AC power receptacles as well as computer room environmental monitoring. Contact CompuSci Inc., Manufacturers Dr., St. Louis, MO 63026; (314) 343-5022.

*Circle 400 on reader card*

### Metrix Ships OpenUPTIME 3.0

Metrix Inc. shipped release 3.0 of its OpenUPTIME service application which includes support desk, field service and repair center modules.

OpenUPTIME automatically decrements from the contract each time training services are provided. OpenUPTIME also is offering task-based contracts which support contract segmenting and allow you to define specific tasks to be performed during a preventive maintenance visit or installation period.

OpenUPTIME also has enhanced the Schedule Board, Manpower Planning, Repair Center and Open Call Monitor features.

OpenUPTIME is written in the Uniface 4GL to support multiple platforms, relational databases and GUIs. Hardware platforms

supported include HP, IBM, DEC, Sun and LAN. Relational databases supported include Oracle, Sybase, Ingres, Informix and Allbase. It also supports graphical interfaces to Windows, OpenLook, X Windows/Motif and Macintosh.

Contact Metrix Inc., 20975 Swenson Dr., Waukesha, WI 53186-4047; (414) 798-8560.

*Circle 399 on reader card*

### Data Race Adds Voice Switching

Data Race introduced Voice Switching for its MACH DS plus line of voice/fax/data/LAN multiplexers. This feature allows MACH DS plus users to place free long-distance telephone calls within their communications network, between branch offices.

MACH DS plus Voice Switching provides private telephone network, toll-free long-distance calls, direct person-to-person dialing, user-selectable destinations and integration with data/fax and LAN traffic.

The Voice Switching feature works with MACH DS plus Free Speech Single and Dual Channel voice/fax modules which digitize and compress voice calls using 4.8 to 13 Kbps of channel bandwidth.

Voice Switching supports touch tone and rotary pulse dialing. Compatibility is further ensured with FXS and FXO, PBX and central office.

Contact Data Race, 11550 IH-10 W., Ste. 395, San Antonio, TX 78230; (210) 558-1900.

*Circle 398 on reader card*

### Brixton Enables "Routerless" Routing

Brixton announced a suite of internetworking software that uses existing UNIX or Windows NT computers to link users over dial-up phone lines using the Point-to-Point (PPP), Frame Relay or X.25 networks.

Brixton's software — BrxPPP (PPP), BrxFR (Frame Relay) and BrxX25 (X.25) — is platform independent. These products are

available for HP-UX, Sun SPARC (SunOS and Solaris), IBM RS/6000, Windows NT and Intel-based PCs running UnixWare, SCO UNIX or Solaris X86.

Brixton's Internetworking Suite software transforms UNIX and Windows NT workstations into standard IP routers. Companies can link distant or mobile systems into an enterprise-wide TCP/IP network by using the routers as gateways to public and private data communications lines. Users can transparently share applications, databases, printers and files, as well as use all TCP/IP services such as remote login, file transfers and E-mail.

Price is \$495.

Contact Brixton Systems, 125 Cambridge Park Dr., Cambridge, MA 02140; (617) 661-6262.

*Circle 397 on reader card*

### Acucobol Inc. Offers AcuServer

Acucobol Inc. announced AcuServer, a network file system support for Acucobol applications running in UNIX TCP/IP networks.

AcuServer gives COBOL applications remote file access support in client-server environments. With Acuserver, applications gain the ability to create and store data files on any network system equipped with AcuServer; full function remote access to all indexed, relative and sequential files; complete record locking support of indexed and relative files; and transparent access of remote and local files.

AcuServer does not require any changes to the existing application code. Pathnames to remote files are defined in the runtime configuration file, the operating system environment or the application code.

Also, AcuServer does not require recompilation of existing programs. When executing with runtime version 2.3 and AcuServer, programs, including those compiled with earlier versions of ACUCOBOL-85, get



instant remote file access capabilities.

Contact Acucobol Inc., 7950 Silverton Ave., Ste. 201, San Diego, CA 92126; (619) 689-7220.

*Circle 396 on reader card*

## MAC-PAC OPEN Provides Software For UNIX

Andersen Consulting announced that MAC-PAC OPEN, an integrated manufacturing, distribution and financial software system, will be available on UNIX platforms from HP, IBM and Sun, running on Oracle, Informix and Sybase.

MAC-PAC OPEN features an open systems architecture based on Andersen Consulting's MACH-II (Machine Independent Interface) execution architecture. MACH-II is a non-proprietary, advanced online processing architecture developed to take advantage of the flexibility and power of UNIX, as well as offer the ease of moving across platforms and databases.

The software is written in C and C++ and conforms to ANSI C and ANSI SQL standards. MAC-PAC OPEN also provides users with a GUI for added ease of use.

Contact Andersen Consulting, 69 W. Washington St., Chicago, IL 60602; (800) 541-7512.

*Circle 395 on reader card*

## Ergodyne Introduces WorkSmart Stretch Software

Ergodyne introduces Ergodyne WorkSmart stretch software, a PC-based program designed to prompt computer-users to take frequent "stretching" breaks from their computers.

Using easy-to-follow text and colorful 3D graphics, the WorkSmart stretch program leads users through a series of stretching exercises for major muscle groups commonly affected by prolonged computer use, including the neck and shoulders, upper extremities, low back and lower extremities. The program can be customized to allow users to focus on the stretches most useful to them. There are 12 stretches included on the program.

The program is designed to operate in a Window 3.1 environment. System requirements for the 16-color version include 20 MHz 386-based PC, 2 MB RAM, 16-color VGA display, 640x480 resolution and a mouse. Systems requirements for the 256-color version include 25 MHz 486 DX-based PC, 4 MB RAM, 256-color VGA display, 480x640 resolution and a mouse.

WorkSmart stretch software costs \$39.95. A site license costs \$16.95 per user and

includes a handbook for each employee.

Contact Ergodyne, 1410 Energy Park Dr., Saint Paul, MN 55108; (612) 642-9889.

*Circle 394 on reader card*



*WorkSmart features a 3D animated model to lead users through exercises.*

## Visual Engineering Launches Ovation

Visual Engineering Inc. introduced Ovation, PC- and Mac-like presentation graphics software for UNIX systems.

Ovation offers presentation graphics capabilities on the same UNIX workstation as the user's core applications, making it easier to create and edit presentations, especially ones that integrate material from the user's mission critical applications.

Ovation runs on X terminals, workstations or PCs running X software anywhere on the network. It also has the ability to drag and drop graphics from other UNIX applications; multidisplay presentations; hyperlinks to trigger UNIX multimedia features; extensive graphical online help; integration with UNIX databases and analytical applications; and rich graphics arts features such as translucency and texturing.

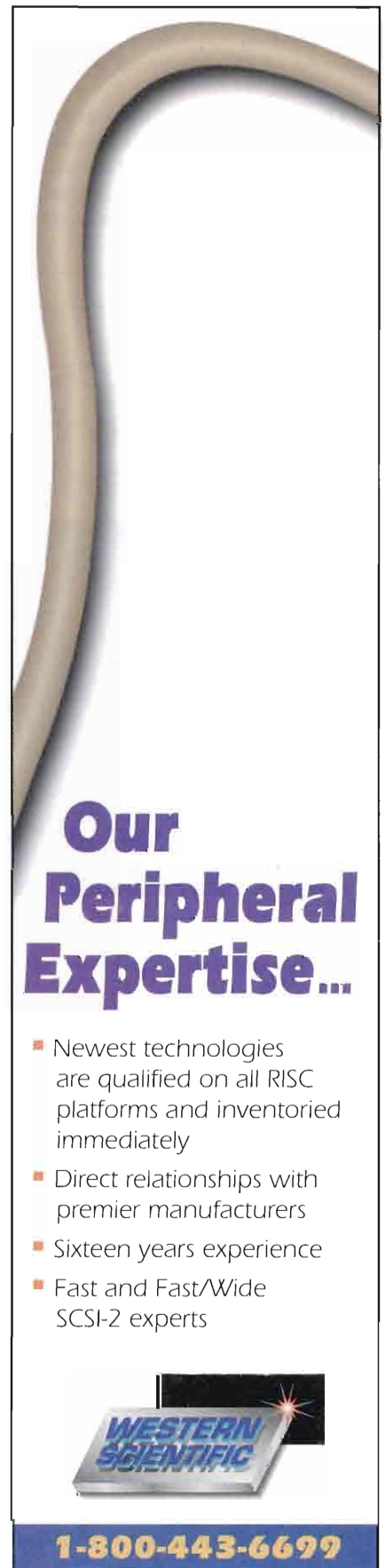
Ovation is available on UNIX platforms from HP, Sun, DEC, RS/6000 and Silicon Graphics, and on PCs running SCO OpenDesktop or UnixWare. Price is \$795 per user.

Contact Visual Engineering Inc., 2025 Gateway Place, Ste. 318, San Jose, CA 95110; (408) 452-0600.

*Circle 393 on reader card*


## MultiQuest Corp. Announces ShowCASE

MultiQuest Corp. announced the release of ShowCASE, a multiuser software engineering tool that supports the Booch method of object-oriented design. It allows software developers to create graphical models of their systems using smart diagramming tools that understand the semantics of the Booch methodology. High quality C++ code can



# Our Peripheral Expertise...

- Newest technologies are qualified on all RISC platforms and inventoried immediately
- Direct relationships with premier manufacturers
- Sixteen years experience
- Fast and Fast/Wide SCSI-2 experts



**1-800-443-6699**

**CIRCLE 480 ON READER CARD**

## new products

then be generated directly from the model. ShowCASE operates on heterogeneous networks of PC, Macintosh and UNIX workstations.

The automatic C++ code generation facility encourages engineers to spend more time in the critical analysis and design phases and less time writing code. Also, ShowCASE can be used to conduct online interactive design reviews.

Users can choose between Microsoft Windows, Macintosh, OSF/Motif or OPEN LOOK platforms.

ShowCASE costs \$749 on Microsoft Windows and Macintosh, and \$2,995 on HP 9000 and Sun SPARC.

Contact MultiQuest Corp., 1699 E. Woodfield Rd., Ste. A-1, Schaumburg, IL 60173; (708) 240-5555.

Circle 391 on reader card

## "ALL BACKUP AND RECOVERY SYSTEMS ARE THE SAME"



Former corporate network administrator

The more you know about network management, the more you know there can be significant differences between one backup software package and another. Differences that can result in substantial losses of time and money. Maybe even data.

### Quick Restore™ Data Backup and Recovery Software.

Why not choose a backup system with the same qualities that first attracted you to UNIX®? Our Quick Restore data backup and recovery software is designed for use in today's multi-platform open systems environment.

Built around industry standards and conventions, QR doesn't have the overhead and inflexibility that comes with proprietary systems.

QR controls data backup and recovery from any point in the network without using NFS. Its on-line indexing, automatic volume location and direct-to-block positioning help you locate and restore your data fast. Our ISO-compliant recording format allows users to recover backed up data without QR installed. And QR's GUI and command-line interfaces give you the power and flexibility to manage your network both on-site and remotely.

QR is easy to use. No needless bells. No useless whistles. Just solid, reliable backup and recovery software to help you manage your network effectively. At Workstation Solutions we do network backup. And we do it well.

### We even back up your backups.

When you have a question, you'll appreciate the difference between reaching a distant voice on the phone and reaching someone who understands. Our knowledgeable support staff is here to offer advice and answer your questions with clear, concise technical information.

To evaluate how QR can make a difference for you, give us a call at 1-800-487-0080 ext.166.

All company and product names are trademark by their respective owners.  
workstation solutions, inc.  
one overlook drive Y amherst nh 03031 Y 603.880.0080 Y fax 603.880.0696



## Racal-Guardata Introduces Data Security Solutions

Racal-Guardata announced access control, encryption and message authentication data security solutions for HP 3000 computers.

The three products provide increasing levels of protection for access by local and remote terminals as well as data exchanged between applications and platforms. Each version uses tamper-resistant CryptoServer II modules and offer DES-based cryptography complying with ANSI and ISO standards.

The Access Control Manager-3000 (ACM-3000) creates and administers user access accounts, with protected local and remote access to an HP 3000 through the mandatory user of one-time passwords.

SecurIt-3000 provides file encryption, file authentication and access control using DES. Data is protected cryptographically, whether locally stored or exchanged between users or applications locally or with remote sites.

The Host Security System-3000 (HSS-3000) allows the secure exchange of encrypted and authenticated information between HP 3000 platforms. Automated key management and exchange is combined with the features of the ACM-3000 and SecurIt-3000 to provide a comprehensive data security system for the HP 3000 networking environment.

Contact Racal-Guardata, 480 Spring Park Place, Ste. 900, Herndon, VA 22070; (703) 471-0892.

Circle 390 on reader card

## Bradmark Delivers MPE/iX Utility

Bradmark Technologies announced the availability of a utility designed to manage MPE/iX disk space and file distribution combined with a revolutionary feature to defragment disk free space.

Files may be truncated either individually, by volume or by volume set, which reclaims wasted disk space beyond end of file. System managers can balance I/O loads at a higher level of detail. The reverse requirement of focusing a file on a single drive is achieved through a File Combine option.

It also provides a view of the graphical disposition of the disk space within the system, similar to Norton utilities, and offers a safe method of reducing the number of free fragments, like the VINIT condense family previously available under MPE/V.

Contact Bradmark Technologies Inc., 4265 San Felipe, Ste. 800, Houston, TX 77027; (713) 621-2808.

Circle 389 on reader card



## QIS Releases F.A.S.T. Engine

Quality Information Systems Inc. (QIS) released its Full Access Search Tool (F.A.S.T.) Engine.

Users can find the documents most likely to contain the required information without having to worry about where the document is located and how many documents are maintained in the library.

The F.A.S.T. Engine consists of a database and a set of support routines. It contains a configurable preset dictionary, a user-defined dictionary and an inverted index of all words in all documents contained in your computer library. It supports searches by words, phrases, two words in proximity to each other, a word and its synonyms, partial words, weighted searches and fuzzy logic searches.

The F.A.S.T. Engine is available in a C or C++ library, and is platform independent. Contact QIS Inc., 10680 W. Pico Blvd., Ste. 260, Los Angeles, CA 90064; (310) 287-0728.

*Circle 388 on reader card*

## MDI Produces ADAMS/Animation

Mechanical Dynamics Inc. (MDI) introduced an add-on option to its ADAMS line of mechanical simulation software. ADAMS/Animation combines realistic animation and visualization features with critical engineering capabilities to improve an engineer's ability to understand and improve the motion behavior of a mechanical system "virtual prototype."

ADAMS/Animation provides multiple light sources, cameras, texture mapping and translucency. Simulations can be run in real time or faster, enabling the detection of even subtle motion differences caused by design variations.

Contact MDI, 2301 Commonwealth Blvd., Ann Arbor, MI 48105; (313) 994-3800.

*Circle 385 on reader card*

## Comtec Unveils HSM Software

Comtec Automated Solutions announced a hierarchical storage management (HSM) software package: Emperor, The Storage Migration Manager. When combined with a variety of tape or optical media, the product will provide a data management solution.

HSM allocates files across a combination of online magnetic disks and less expensive near-line tape and optical libraries. Files can be migrated based on time of last access, disk capacity or size, depending on the user specifications.

It supports heterogeneous networks of HP, Sun, Novell, IBM and SCO with other platform additions planned. Comtec offers hardware from HP, Exabyte, StorageTek, Metrum and Odetics. The product line includes 8mm, VHS and 3480 tape libraries as well as optical jukeboxes.

The Comtec HSM solutions range from \$50,000 to \$300,000. Backup solutions range from \$5,000 to \$75,000.

Contact Comtec Automated Solutions, 10,000 Old Katy Rd., Ste. 150, Houston, TX 77055; (713) 935-3666.

*Circle 383 on reader card*

## HP AccuPage Enhances Scanned Images

HP announced HP AccuPage Technology, an image-processing technology that allows user to design optical character recognition (OCR) software. OCR technology enables users to scan documents directly into their PCs or Mac computers as editable text without re-keying the data.

HP AccuPage is used for HP ScanJet II scanners — ScanJet IIC and IICx color scanners and the ScanJet IIP grayscale scanner — which have built-in HP AccuPage-enabled hardware functions.

HP AccuPage 2.0 adds small text enhancement, automatic page optimization and faster page processing.

OCR packages using HP AccuPage require a minimum 386 or 68020 processor. Windows 3.1 or Macintosh System 7.0 or later also is required.

## PowerVideo700 Available For HP 9000 Series 700s

Parallax Graphics announced the PowerVideo700 series, a family of digital video products exclusively for the HP 9000 Series 700 workstations.

The PowerVideo700 features four 24-bit, EISA-based products offering full-size, full-motion, true-color video. Users can display digitize, compress and store video and take advantage of optional analog output. The software tools are integrated with HP MPower V2.0 to support multimedia applications.

PowerVideo700 uses VideoStream technology which supports simultaneous video windows and fast frame rates, making it suitable for performance-intensive applications like desktop videoconferencing and video-on-demand.

Contact Parallax Graphics Inc. 2500 Condensa St., Santa Clara, CA 95051; (408) 727-2220.

*Circle 382 on reader card*



# Together We Perform.



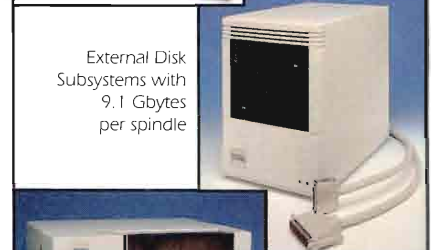
Internal Disks to 9.1 Gbytes per spindle



16 Gbyte 4mm DAT Subsystems



Multi-function Optical Drive Subsystems



External Disk Subsystems with 9.1 Gbytes per spindle



Autoloading 192 Gbyte 4mm DAT Jukeboxes

4631 Viewridge Ave  
San Diego, CA 92123

Email: info@wsm.COM



**1-800-443-6699**

CIRCLE 480 ON READER CARD

**Magic Software For The HP Releases SortMagic/XL 3.0**

Magic Software for the HP announced SortMagic/XL 3.0 which is now compatible with HP SORT and SORT intrinsics.

SortMagic/XL 3.0 allows existing CM or NM programs to take advantage of SortMagic. CPU and elapsed times are reduced by 50 percent or more. No changes to existing programs are necessary.

IMAGE database processing is improved with version 3.0, providing a simple interface for selecting, extracting and sorting IMAGE data. SortMagic can be run programmatically or as a standalone process.

Contact Magic Software for the HP, 4786 S. Olathe Way, Aurora, CO 80015; (303) 766-3222.

Circle 381 on reader card

**teem Connectivity Tools Include API Option**

Pericom Software announced that the application programming interface (API) is now an option with it's teem connectivity products. This provides an invisible link between the user program and host application.

Pericom's API enables the teem range of terminal emulators to be integrated into user written applications using a comprehensive set of commands including: connection to 26 separate host sessions simultaneously; copying all or part of the visible presentation space; searching presentation space for strings or fields; initiating keystrokes; and configuration of emulation parameters.

Available for teemX for UNIX environments and teemtalk for Windows, the API enables access from UNIX- and Microsoft Windows-based platforms. Multiple simultaneous emulations supported include ANSI, Data General, DEC, IBM, HP, Microcoulour, Prime, Tandem, Viewdata and Wyse.

Contact Pericom Software PLC, The Priory, Cosgrove, Milton Keynes MK19 7JJ, United Kingdom; 44 908 265533.

Circle 392 on reader card

**Chestnut Data Releases CDS/Scan**

Chestnut Data Systems announced CDS/Scan, an online Report Display and Archival system designed specially for the HP 3000 computer systems and sites attempting to reduce costs associated with report printing, distribution and microfiche archiving.

CDS/Scan supports the HP Optical Disk Library system (jukebox) containing up to 150 GB of information. It also can archive to IEM single unit optical disk drives without requiring any special device handlers. CDS/Scan also is available, packaged with an IEM 650 MB or 1 GB optical disk drive system and the HP Optical Disk Library.

Other features include file download to PC with report mapping and field delimiter insertion

Price starts at \$2,500 and increases depending on CPU size.

Contact Chestnut Data Systems, 6981 North Park Dr., Ste. 613, Pennsauken, NJ 08109; (609) 662-1611.

Circle 387 on reader card

**DataExpress Interfaces With HP SQL Databases**

M.B. Foster shipped a new version of DataExpress that interfaces with HP's SQL databases giving HP 3000 end users easy

**HP RENTALS**   ■   **HP RENTALS**   ■   **HP RENTALS**   ■   **HP RENTALS**

HP WORKSTATION RENTALS

**WORKSTATIONS**

755	750	CRX	433 S	CRX	382	360	332
735	730	CRX-24	425 T	VRX	362	350	330
725	720	CRX-24Z	425 S	GRX	380	345	320
715	710	CRX-48Z	425 E	PVRX	375	340	310
712	705	GRX	400 S/T	EVRX	370		

**AND MORE . . .**

Printers	X Terminals	PC's	Discs	800 Series
Plotters	APOLLO ON Series	Memory	Test Equipment	Data Acquisition

TSA is THE place for daily, weekly, monthly or long term rentals of Hewlett-Packard equipment. Ask about our 6-12 month purchase plans. Equipment available for same day shipments!

1-800-422-4872

713/935-1500 • Fax 713/935-1555 • Email: info@tsa.com

**HEWLETT  
PACKARD**

Authorized  
Rental  
Company

2040 West Sam Houston Parkway N. • Houston, Texas 77043

**HP RENTALS**   ■   **HP RENTALS**   ■   **HP RENTALS**   ■   **HP RENTALS**

CIRCLE 293 ON READER CARD



# Interex '94

Conference & Expo

HP is the definitive leader in open systems strategies today and Interex is *the* conference leader for anyone interested in HP computing solutions.

## Shared Knowledge.

Only at Interex '94 will you find the key people, state-of-the-art technologies, and innovative strategies for Open HP Systems computing. Top industry speakers, extensive tutorials, power-packed papers, hands-on sessions, roundtables and panels... from desktop to client-server, to enterprise-wide computing, it's all happening in Denver, September 18-22.

*"Great learning experience!  
Absolutely needed to remain  
competitive in the IT World."*

Systems Analyst  
Eil Lilly Industries

## Shared Power.

### Get in on the Action at Interex '94!

Request the information you need ...

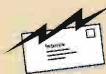
- ✓ The full conference brochure detailing all presentations.
- ✓ A *free* Expo Pass (a \$50 value). Also gives you access to keynotes & vendor presentations!
- ✓ Information about exhibiting at Interex '94.



**Call 800.interex  
or 408.747.0227**



**Fax your request  
to 408.747.0947**



**E-Mail  
conference@interex.org**



**Snail Mail  
P.O. Box 3439  
Sunnyvale, CA  
94088-3439**

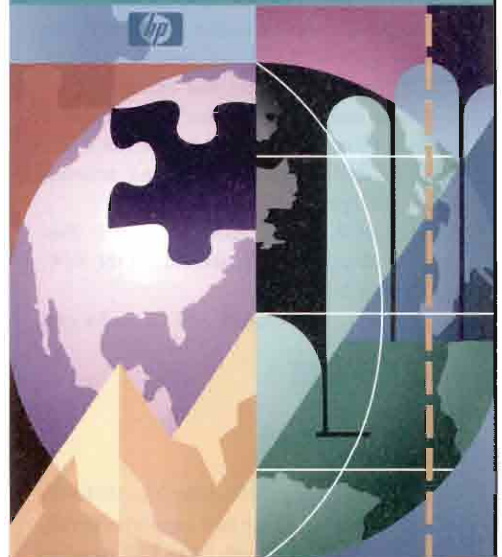
### If you're looking at HP systems solutions or want to make your HP system more efficient...

This is your chance to preview the latest products from hundreds of companies participating in Interex '94 Expo. Network one-on-one with vendor representatives about your specific needs. Get the information you need to make informed buying decisions.



- DENVER, COLORADO
- COLORADO CONVENTION CENTER
- SEPTEMBER 18-22, 1994

*Announcing  
The Hewlett-Packard  
Computing Event  
of the Year!*



**The place to be  
to stay on top of the  
HP Open Systems World.**

#### WHO should attend:

**Anyone and Everyone who needs  
to know about the future of HP  
computing systems:**

- Information System Mgrs.
- Network Mgrs.
- Corporate Management
- Developers
- Buyers & Resellers
- System Integrators
- HP Users/Personnel
- Service Providers

#### *New This Year* **Open Systems & Client-Server Showcase**

*This showcase, featuring live demos,  
will give you an opportunity to see a  
fully integrated enterprise-wide, open  
client-server solutions in action.*



The International  
Association of  
Hewlett-Packard  
Computing  
Professionals

access to host-based enterprise information.

The software transfers HP host data into PC formats like Lotus, Excel, dBase or WordPerfect, using a consistent interface from either PCs or terminals.

Version 1.73 also taps ALLBASE/SQL databases running on HP 3000s. The ALLBASE data can be output in HP 3000 file formats such as MPE self-describing files, KSAM files and PowerHouse sub-files.

Other enhancements include increased control of batch jobs, which can be run under different session, group, user and account names with proper password controls.

Contact M.B. Foster Associates, P.O. Box 589, 50 Water St., Chesterville, ON K0C 1H0; (800) 267-9377.

*Circle 384 on reader card*

## **HARDWARE**

### **IMC Introduces XL-100E/IP**

IMC Data Manager offered the XL-100E/IP, an Ethernet print server that supports Novell, TCP/IP UNIX, network DOS PCs running

XPRESS and non-network workstations. It connects printers directly to the network, and can turn a laser printer into a plain paper fax machine via a fax modem.

The XL-100E/IP is a dedicated hardware device, therefore it requires no additional software because built-in firmware interprets the supported protocols. Novell utilities such as Pconsole, Capture and Nprint spool print jobs to the XL which is set up as a Pserver or Rprinter. The XL also is an LPD server which supports standard UNIX systems such as HP-UX 8.x for HP 9000 Series 300/400/700 workstations, SunOS version 4.1.2 or Sun SPARCstations, DECstation Ultrix, IBM RS/6000 and AIX, and SCO UNIX.

Direct peer-to-peer high-speed printing on the Ethernet is available to DOS PCs loading with XPRESS, a 4K TSR proprietary program that captures jobs directed to ports LPT1 through LPT4 and sends them on the Ethernet to any selected printer on the XL.

The XL is controlled by a Motorola MC68000 CPU and includes 512K memory, one BNC thin net connector, two high-speed (170 KB per second) parallel ports and eight

(up to 115 Kbits per second) serial ports. Expansion options include 4 MB of memory and eight serial ports.

Price is \$995.

Contact IMC Data Manager, 4151 Business Center Dr., Fremont, CA 94538; (800) 537-5999.

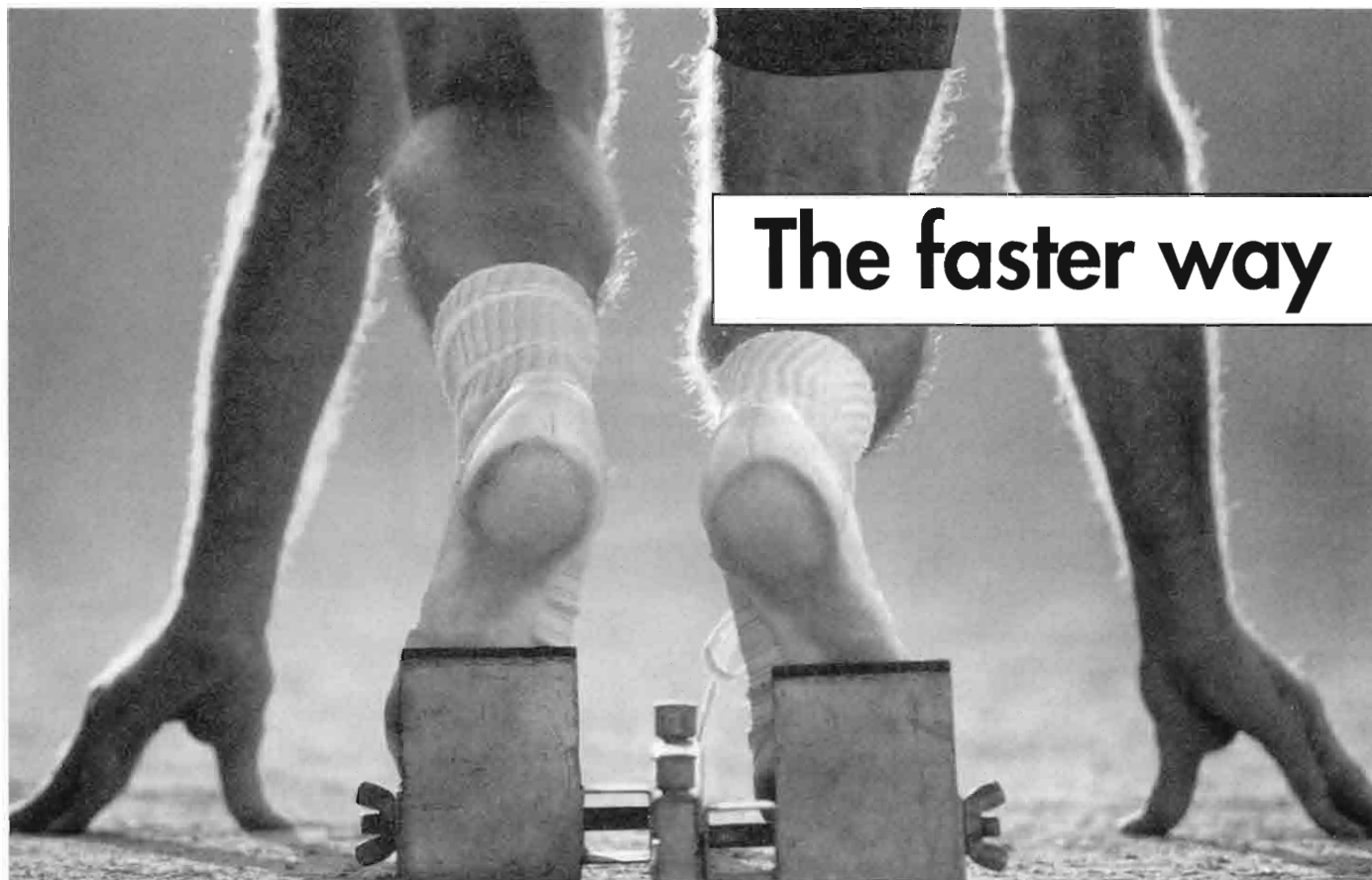
*Circle 379 on reader card*

### **Antex Offers Z.SoundSystem**

Antex Electronics Corp. offered its pro-audio Z1 Sound Board and Z.WAV wavetable synthesizer/sound module daughtercard to OEMs, integrators and PC users with a fully-integrated, high-performance digital audio and MIDI-compatible digital audio sound solution for use in multimedia applications and products.

The bundled products include the Antex Series 3, Model Z1 16-bit digital audio adapter, the Z.Wave 32-voice, 15-part polyphonic synthesizer sound module, Voyetra Multimedia Sound Software and Windows 3.1-compatible software driver.

The Z.Sound Systems offers specifications



**The faster way**

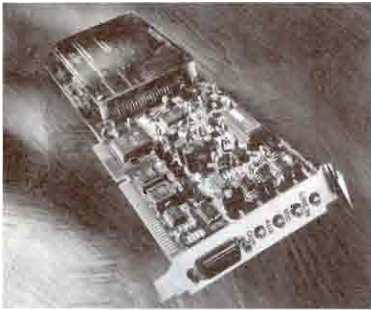


including S/(ND) of 72+dB, a dynamic range of 80dB, a frequency response of 20 Hz to 20 KHz, and meets Microsoft and Interactive Multimedia Association standards.

Z1 costs \$395 and The Z.WAV daughtercard sound module costs \$295.

Contact Antex Electronics Corp., 16100 S. Figueroa St., Gardena, CA 90248; (310) 532-3092.

Circle 378 on reader card



*The Z.Sound Systems provide high-performance digital audio to PCs.*

## HP Provides AdvanceStack

HP introduced three 10Base-T hubs that incorporate manageability and functionality of chassis hubs while retaining the flexibility and economy of stackable hubs.

An expansion slot lets AdvanceStack hubs upgrade to SNMP management, security, bridging and routing, and will accommodate remote monitoring (RMON) in the future; and high-speed backbone connections to 100VG-AnyLAN, FDDI and ATM.

HP AdvanceStack hubs can be chained together — up to 185 meters apart — with industry-standard coaxial or unshielded twisted pair cable. Up to 16 hubs (784 nodes) in a stack can be managed with one SNMP management module installed in any one hub in the stack.

AdvanceStack hubs offer three levels of network management: a Windows-based management application, HP Stack Manager, that lets network managers configure, monitor and troubleshoot the entire stack; the addition of a single SNMP module provides the benefits of SNMP management and the

network traffic-analysis capabilities of HP's Embedded Advanced Sampling Environment (EASE); and the addition of more SNMP modules provides redundant management support and workgroup security features, such as eavesdrop prevention and auto-port dialing.

Prices are \$1,079 for the 12-port version, \$1,699 for the 24-port, \$2,899 for the 48-port and \$695 for an SNMP Management card.

## DCI Announces One-Port Controller

Development Concepts Inc. (DCI) announced a one-port version of its Twinax Terminal Controller line which will support up to seven 5250 terminals and printers running the following UNIX platforms: HP 9000 Series 800, RS/6000 or any PC running SCO UNIX.

This board is designed to complement DCI's existing two- and four-port Twinax Terminal Controllers which enable UNIX systems to continue using 5250 terminals and printers which were previously installed on IBM S/36 or AS/400 computers.

Cost is \$2,100.

## Quantify

Quantify™ gives you a powerful tool to eliminate performance defects. It lets you see exactly how your application behaves during execution, so you can make your code faster. Because Quantify is simple, effective and non-intrusive, it can be used by all developers, all the time.



## Free Performance Primer

Our 20 page booklet, "Performance Engineering: A Practical Approach to Performance Improvement" gives you expert advice about how you can consistently achieve high-performance code. To receive your free copy of this primer or a free evaluation copy of Quantify, call or email us today.

Phone: (800) 353-7873

Email: [info@pure.com](mailto:info@pure.com)

**PURE SOFTWARE**

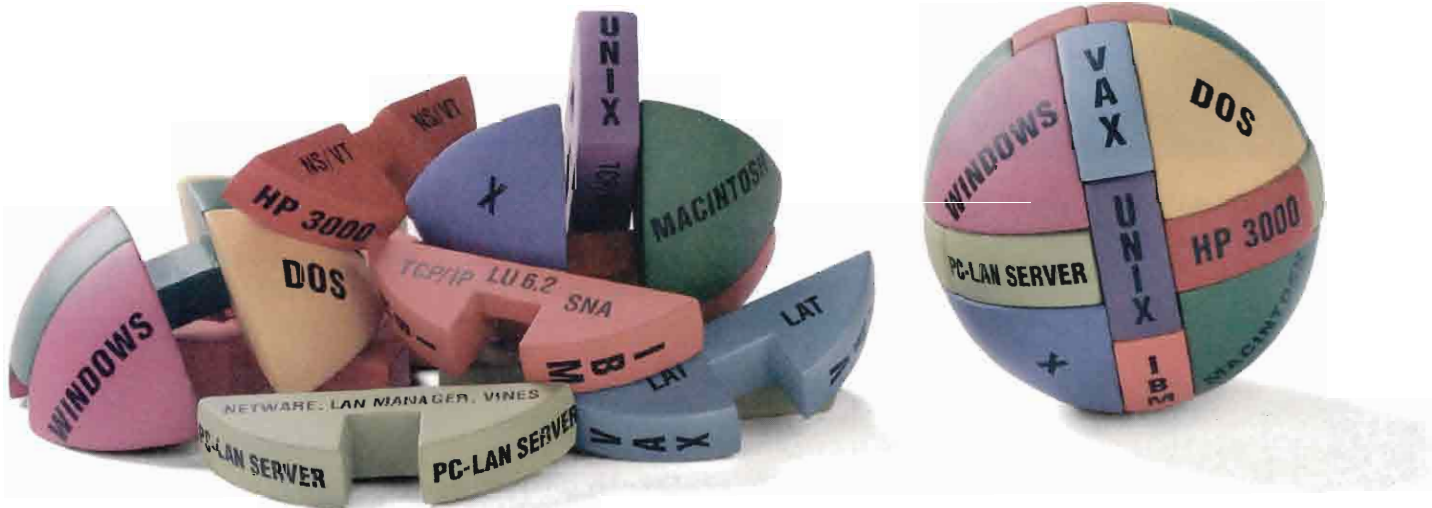
CIRCLE 178 ON READER CARD

# to faster code.

*Your program seemed slow when you built it. It only got worse with integration. Now it's been released and complaints about its sluggishness are growing. Its poor performance is damaging your customers' view of your product.*



# PC connectivity?



## Reflection makes it child's play.

If connecting PCs to minicomputers, mainframes, and servers has you puzzled, choose Reflection® and Reflection Network Series® software from WRQ.

No other software vendor offers such a complete solution to integrate personal computers with HP 3000, HP 9000, VAX/VMS, UNIX, and IBM systems. Reflection provides the most precise terminal emulation for text and graphics, fast file transfer, a versatile command language, and more—for DOS, Windows, and Macintosh platforms. Reflection also offers a reliable PC X server. All

backed by a solid company with exceptional technical support.

If you want to run host and server applications at the same time, add the Reflection Network Series. Run NS/VT, LAT, Telnet, and TCP/IP concurrently with LAN protocols from a single PC, over Ethernet or Token-Ring networks. The Reflection Network Series also includes support for Berkeley Sockets, NetBIOS, and NetIPC—yet it takes remarkably little memory.

Putting all the pieces together can be challenging. So avoid the mind games. True genius is simplicity.

Whether you need basic PC-to-host connections, links to multiple hosts and LANs, or you're moving to the world of X, there's one obvious solution; Reflection.

To solve your connectivity problems call

**800-92NETWORK**  
In Europe, call +31.70.375.11.00  
Outside Europe, call 206.217.7100

CIRCLE 263 ON READER CARD

 **Reflection**  
Making PC Connections Count



## new products

Contact DCI, 730-D Louis Dr., Warminster, PA 18974-2829; (215) 443-9652.

Circle 376 on reader card

### Talaris Systems Expands Laser Printer Family

Talaris Systems Inc. unveiled two high-performance members of its Imagestation laser printer line — the Talaris 3290FT Imagestations, a 32 ppm network laser printer,

and the 2090FT Imagestation, a companion 20 ppm printer. All Imagestations accept TIFF files directly with no host software or set-up commands.

The two printers use an Intel i960 RISC-based image processing accelerator to provide a rated engine speed printing for up to 100 KB per page TIFF files.

The 3290FT and the 2090FT have Ethernet built in and optional transceivers are

### HP9122C HP9153C Replacements

## ISA Floppy Disk Family



**ISA 1015**  
(HP9122C Compatible)  
3.5 inch dual  
HP-IB SS/80

**ISA 2025**  
(HP9153C Compatible)  
40MB with 3.5 inch single  
HP-IB CS/80 SS/80

**ISA 1060**  
5.25 inch single  
HP-IB SS/80

**ISA 1015S (NEW SCSI)**  
3.5 inch  
single  
(HP internal FD compatible)  
SCSI-for HP9000 300/400/  
700/800

**ISA 1060S (NEW SCSI)**  
5.25 inch single  
SCSI-for HP9000 300/400/  
700/800

• Memory Card • I/F Card • Floppy • Hard Disk • MO Disk • QIC Tape • DAT •

**ISA, the Largest HP Enhancements Manufacturer**

HEAD OFFICE: ISA CO., LTD. Japan. 1-1-5 Sekiguchi, Bunkyo-Ku, Tokyo 112 Japan  
Tel: 03-5261-1160 Fax: 03-5261-1165



USA: Texas ISA, Inc. Tel: 713-493-9925 Fax: 713-493-2724  
S.E. ASIA: ISAHK CO., LTD. Tel: 330-1977 Fax: 330-1077  
EUROPE: EURISA SARL. Tel: 1-48-61-48-95 Fax: 1-48-61-49-06

## Pro\_EDI

### Intelligent EDI

*Pro\_EDI* is an advanced, flexible EDI utility which runs on many different computers. *Pro\_EDI* gives you the power to integrate EDI seamlessly with any application software.

### User-defined EDI

With *Pro\_EDI*, you have complete control over the conversion of EDI data formats to the formats used by your own software. You can define transaction sets *exactly* as your trading partners do. You have total flexibility to define the files you use to interface with your applications. You can control, at the element/sub-element level, the conversion of data to and from the EDI formats and the application software formats.

*Pro\_EDI* supports all ANSI X.12 standards and derivatives (such as TDCC, VICS, AIAG, etc.), and UN/EDIFACT.

*Pro\_EDI* runs on HP 3000 and HP 9000 computers, PCs, and UNIX (HP-UX, SCO, ATT).

### Single-tier pricing

*Pro\_EDI* has one price tier for each hardware platform on which it runs. There are no added charges for CPU upgrades, new trading partners or EDI documents.



Pro Software, Inc.  
Suite 240  
725 Barclay Circle  
Rochester Hills, MI 48307

(810) 299-0020 (Voice)  
(810) 853-2442 (FAX)

*Pro\_EDI* is a trademark of Pro Software, Inc. UNIX is a trademark of UNIX System Laboratories in the USA and other countries.

available to connect to thin-wire or twisted pair. The Ethernet protocol support includes Novell SPX/IPX bi-directional lpd, lpq and ftp, and DECnet host connections.

The Talaris Automatic Switching capability also recognizes six other optional printer languages. It either switches to that language or displays a warning page if the optional language is not present.

The Talaris 3290FT costs \$25,550 and the 2090FT costs \$18,900.

Contact Talaris Systems, P.O. Box 261580, San Diego, CA 92196; (800) 934-3345.

*Circle 377 on reader card*

### **TSSterm 420 Emulates VT420s on HP 9000s**

Thursby Software Systems Inc. (TSS) released TSSterm 420 a VT420 terminal emulator for HP 9000 workstations.

TSSterm 420 provides HP 9000 users with exact DEC VT420 terminal emulation in the X Window environment. TSSterm 420 allows the user to easily map their keyboards to their own preferences, while retaining the Motif GUI of the HP 9000 workstation.

TSSterm 420 emulates DEC VT52,

VT100, VT220, VT320 and VT420 terminals. Other capabilities include true 132 column mode, multiple sessions, multiple pages, print capture and session logging. TSSterm 420 also provides true representation of all character attributes, including bold, blink, underline and reverse.

Price starts at \$495 for a four session license.

Contact Thursby Software Systems Inc., 5840 W. Interstate 20, Ste. 100, Arlington, TX 76017; (817) 478-5070.

*Circle 380 on reader card*

### **MultiTech Systems Offers MultiModem II**

MultiTech Systems announced V.34 of MultiModem II, a 28.8 Kbps modem that has a FlashROM-based processor that allows you to upgrade quickly and easily by downloading a file from a BBS.

The MultiModem II comes with an optional Intelligent Serial Interface (ISI) to ensure proper serial port performance at the higher data rate. It incorporates remote configuration and document conferencing (whiteboard) capability.

Contact MultiTech Systems, 2205 Woodale Dr., Mounds View, MN 55112; (612) 785-3500.

*Circle 375 on reader card*

### **MDL Releases XE Exabyte**

MDL Corp. released XE Exabyte Domain Tape Driver which enhances the life and functionality of the HP/Apollo workstations running under the Domain operating system. In addition, the XE Exabyte generates greater performance to HP 9000 Series 400 and DN 2500, 3500, 4500 and 5500 series workstations.

The XE Exabyte Domain Tape Driver provides users with read and write capabilities to Exabyte tapes. Additionally, this system is compatible with tools such as wbak, tar and Workstations Solutions Exatape software. It is a full function driver with libraries and a utility program that allows access to all capabilities of Exabyte tape drives.

Contact MDL Corp., 15301 N.E. 90th St., Redmond, WA 98052; (206) 861-6767.

*Circle 374 on reader card*

**Everything For Your HP, For Less!**

Concorde Technologies offers a comprehensive line of HP computers, mass storage peripherals, memory upgrades, accessories and software. All with excellent availability, free technical support and the best possible prices.

**We're Your "Hewlett-Packard Experts"**  
**(800) 359-0282**

6370 Lusk Blvd., Suite F100  
San Diego, CA 92121  
(619) 458-0702  
FAX: (619) 458-0722

**CONCORDE TECHNOLOGIES**

VISA  
MasterCard

CIRCLE 232 ON READER CARD



# Reader Information

This month's issue contains many advertisements for hardware and software products available for your HP systems. Your investment in these products today could mean a more lucrative future for your company. Use the information below to learn more about the advertisers' offerings, then use the reader information card to initiate your direct link to valuable information about these advertisers' products.

## **FOURTH SHIFT CORP. CIRCLE 182**

Fourth Shift is a leading developer of integrated industrial management software. Founded in 1984, FOURTH SHIFT has approximately 2,000 customers in 37 countries. The company has two product lines: the Manufacturing Software Series (MRP II) for DOS/Windows/NetWare, and the JIT Enterprise System (ERP) for UNIX/ORACLE environments.  
Call (800) 342-5675, Fax: (612) 851-1560

## **ALDON COMPUTER GROUP CIRCLE 163**

Change management, quality assurance and program testing software S/COMPARE HARMONIZER, ANALYZER.  
Call (800) 825-5858

## **ANDERSEN CONSULTING SOFTWARE PRODUCTS CIRCLE 174**

MAC-PAC integrates manufacturing, distribution and finance into a single online management system. The software supports a discrete, Just-in-Time/repetitive, make-to-order, job shop or a combination of these manufacturing environments. Multi-language and multi-currency features provide the capabilities necessary to keep pace with a changing global marketplace. With expert systems technology, our patented Expert Configurator captures the knowledge of your employees to control sales order entry, pricing and manufacturing.  
Call (800) 541-7512 or (312) 307-6588.

## **ARTECON INC. CIRCLE 242**

Artecon is a leading systems integrator and manufacturer of value-added hardware and software products for the UNIX marketplace. Product lines include: Opticals, Removables, Backups, Storage and Accessories.  
Call (800) USA-ARTE, FAX (619) 931-5527.

## **CLIENT SYSTEMS, INC. CIRCLE 479**

Client Systems, Inc. is the leading two-tier distributor of client/server hardware and software solutions to value-added resellers and systems integrators in the HP commercial computing marketplace throughout the US and Canada. We provide "best-in-class" products and services to the channel, including Oracle, Cognos, Edify, Distribution Resources Company and other commentary products. Centrally located in Englewood, Colorado, systems are expertly assembled, configured, tested and shipped.  
Call (303) 779-4301 for details.

## **COGNOS CORP. CIRCLE 117**

Cognos provides application development software for HP MPE V, MPE XL and HP-UX platforms.  
Call (800) 4-COGNOS.

## **COMPUTER MARKETING INTERNATIONAL INC. CIRCLE 454**

Independent distributor of new and refurbished HP Apollo workstations and peripherals. We provide in-house technical support and depot repair services. We are committed to providing 100% customer satisfaction on every order.  
Call 800-497-4CMI.

## **CONCORDE TECHNOLOGIES CIRCLE 232**

Broad line of HP mass storage (disk, tape, optical) and RAM memory upgrades for HP, Apollo, DEC, SUN, RS/6000 and Silicon Graphics computers. Best prices, availability, warranty and support. Call 1-800-359-0282 for complete information and pricing.

## **FUTURESOFT CIRCLE 193**

FutureSoft manufactures a complete line of terminal emulation and communications software products. The DynaComm family of products provides comprehensive terminal emulation and network connectivity for PC to mainframe links.  
Call (800) 989-8908 for additional information.

## **GE RENT/LEASE CIRCLE 464**

GE Rental/Lease provides the benefits of short-and long-term rental and leasing of workstations PCs, notebooks, accessories, and multimedia equipment from manufacturers like HP, Sun, Silicon Graphics, Tadpole and more! Save working capital on the latest technology with overnight, nationwide delivery and convenient toll-free ordering! We can provide customized equipment solutions like Sun's SAPRC station 10 models 512MP, 402MP, 51, 40, 41 and SPARCserver 1000s.  
Call (800) GE-RENTS

## **HERSTAL AUTOMATION LTD. CIRCLE 173**

Reasonably priced data storage subsystems with performance in mind. Call (313) 548-2001.

## **HUMMINGBIRD COMMUNICATIONS LTD. CIRCLE 156**

The worldwide leading vendor of PC to X/UNIX connectivity software provides solutions for DOS, MS-Windows, Windows NT and OS/2 platforms. Call (905) 470-1203

## **IEM INC. CIRCLE 122**

IEM is the manufacturer of the largest line of HP third-party peripherals. IEM offers affordable solutions for the HP environment. IEM's product line includes 4mm tape drives and autoteaders, 8mm tape drives, autoteaders and carousels, QIC tape drives, optical drives (WORM, MOD, Multi-function and CD-ROM), fixed winchester drives, floppy disk drives, combination drives and more. Most IEM products are available with either an HP-IB or SCSI interface for HP 1000, 3000 and 9000 computers. IEM also offers a number of unique software solutions, including an automated backup and archive program.  
Call (303) 221-3005 or (800) 321-4671.

## **KINGSTON TECHNOLOGY CORP. CIRCLE 281**

Kingston Technology designs and manufactures memory upgrades for PCs, laptops, workstations and laser printers. The Kingston product line also features mass storage subsystems and processor upgrades. Call (800) 835-2545, FAX (714) 435-2699.

## **LAWSON SOFTWARE CIRCLE 443**

Lawson Software is a full-service supplier of enterprise-wide, client/server business management solutions. The Lawson systems have the power to assist you in managing financial and capital resources, personnel-related information, and the distribution of materials and inventory. As a recognized industry leader for support and services, Lawson Software is dedicated to achieving 100 percent client satisfaction.

## **MINISOFT INC. CIRCLE 472**

Minisoft 92 for DOS and Windows providing HP terminal emulation and LAN connectivity for just \$129.  
Call (800) 682-0200.

## **NEWPORT DIGITAL CORP. CIRCLE 246**

Accelerator cards for HP 9000 Series 200 plus HP 310 and HP 320. Ten-fold performance improvement.  
Call (714) 730-3644.

## **PRO SOFTWARE, INC. CIRCLE 277**

Pro Software, Inc. is a leading developer of EDI translation and document management system for HP, PC and UNIX systems.  
Call (810) 299-0020, FAX (810) 853-2442.

## **QUEST SOFTWARE CIRCLE 261**

The only complete HP 3000 solution for  
1) High-speed network file and database access.  
2) IMAGE, KSAM and MPE file shadowing.  
3) Low overhead and network spooling.  
Call (714) 720-1434.

## **TEXAS ISA INC. CIRCLE 245**

Complete range of mass storage devices and their peripherals for HP 3000, 1000 and 9000 from ISA.  
Call (713) 493-9925, FAX (713) 493-2724.

## **TRYONICS INC. CIRCLE 477**

Tryonics Inc. is a provider of quality remanufactured HP Apollo, Apollo Domain series workstations, spare parts, network and software consulting services. Call (603) 427-6850.

## **TECHNICAL & SCIENTIFIC APPLICATION INC. CIRCLE 138**

TSA is a Hewlett-Packard Authorized Rental Company for HP 9000 700, 400, and 300 series workstations and peripherals. We are an "HP only" workstation company and carry the complete line of HP 9000's IN STOCK for SAME DAY SHIPMENTS. All equipment available for long or short term rental, lease/purchase programs also available. We also rent plotters, printers, disc drives, memory, PC's Apollo DN series, data acquisition and test equipment. Call (800) 422-4872, Fax: (713) 935-1555. Email: info@tsa.com

## **UNISON-TYMLABS INC. CIRCLE 499**

Unison-Tym Labs is a supplier of networked systems management solutions for both UNIX and MPE. Product areas include workload management, storage management, print automation and desktop integration. Call (408) 245-3000.

## **VISUAL NUMERICS, INC. CIRCLE 225**

Reduce source code by up to 95% using the IMSL Numerical Libraries in FORTRAN and C (and now in Fortran 90). They provide the most comprehensive collection of mathematical and statistical subroutines available. Visual Numerics also offers IMSL Exponent Graphics (for FORTRAN, C or X), which allows you to incorporate presentation-quality 2D and 3D graphics in your applications with as little as two function calls.  
Call (800) 222-IMSL or (717) 954-6785 today!

## **VITAL SOFT INC. CIRCLE 143**

VISIMAGE, the end-user report writer for HP 3000 market. StarJet, the electronic forms solution for your HP LaserJet. VISIMAGE and StarJet can be sold independently.  
Call (800) 7VITALSOFT for free demo.

## **WRQ (WALKER RICHES & QUINN) CIRCLE 263**

Makers of Reflection Series Software. HP terminal emulation for PCs and Macintoshes. Call (800) 872-2829.

## **WESTERN SCIENTIFIC MARKETING INC. CIRCLE 480**

Western Scientific offers a complete line of high-performance peripherals to upgrade and enhance your Sun, Hewlett-Packard, Silicon Graphics, DEC, IBM RS/6000 and Novell workstations. Since 1978, we have been supplying our customers with budget conscious, state-of-the-art technology peripheral subsystems. Using high quality components from premier suppliers such as Seagate, Hewlett-Packard, DEC, IBM, Conner/Archive, Exabyte, Tatung Overland Data/Cipher and Adic. We configure, integrate and test innovative disk, tape optical, RAID, jukebox and memory subsystems to meet your application requirements.  
Call (800) 443-6699.



PASS THE WORD — SAY YOU SAW IT IN HP PROFESSIONAL

# The Future Belongs to the Open-Minded.



**New for 1994:  
Internet Village**  
Introducing our exclusive showcase - a "must see" for businesses reaching beyond the enterprise to the enormous information resources of the Internet.

**O**pen Systems is no longer a movement. It's clearly the destination for enterprise-wide computing solutions. And while the course is set, the route your company takes is as unique as the needs of your organization. Which is why you simply cannot afford to miss UNIX EXPO '94.

UNIX EXPO is the definitive marketplace for advanced client/server, networking and

interoperability solutions. It's all business on the show floor where you'll find more than 400 vendors and the broadest possible range of UNIX/Open Systems technologies, applications, products and services.

And with more than 100 hours of comprehensive seminars and tutorials, UNIX EXPO is far more than a trade show. It's a key resource for the information, insights and expertise

your management and staff need to implement your corporate integration strategies.

Plan to attend UNIX EXPO '94. It'll do more than open your eyes to UNIX/Open Systems solutions. It'll open your mind to the future of enterprise computing.

**Call 800.829.3976 ext. 9128 for a comprehensive Attendee Planning Guide.**

**October 4-6, 1994  
Jacob K. Javits  
Convention Center  
New York City**



**Where Enterprise  
Computing Gets Down  
To Business.**



UNIX EXPO is produced and managed by Bruno Blenheim, Inc.  
One Executive Drive, Fort Lee, NJ 07024  
800.829.3976 · 201.346.1400 · Fax 201.346.1602

UNIX EXPO<sup>SM</sup> is a service mark of Blenheim Holdings, Inc., exclusively licensed to Bruno Blenheim, Inc. · UNIX is a registered trademark of Novell-USG. UNIX EXPO is not affiliated with Novell-USG.

**CIRCLE 24 ON READER CARD**



# Why not the best?



HP 1000,  
HP 3000 &  
HP 9000

8 & 25 Gigabyte  
Streaming Tape Drives

96 Gigabyte  
DDS Autochanger

Unattended backup of  
all data onto compact  
cartridges

Media Translation &  
SS update service  
available

## Also Available:

### HP 1000 Memory

Improves system performance. Free evaluation.  
2 to 32 MB for A990, A900, A700, A400,  
A600+, & A600. Ten year warranty.  
Field Expandable



### HP 1000 & HP 9000 SCSI Disk Drives

Capacities to 2 GB with full five year warranty.

### HP 1000 & HP 9000 Optical Discs

1 Gigabyte Rewritable & Multi-function. Ideal for  
information retrieval and archival data storage

### Superclock/1000 Automatic time & date

*"I promise you —  
no service hassles, no  
matter who is servicing  
your HP system."*

Rick Walsh  
President

## Herstal Automation

7414 Manatee Street  
Sarasota, FL 34243-1824 U.S.A.  
Phone: 1-813-358-2001  
FAX: 1-813-358-2010  
E-Mail: SALES@HERSTAL.COM

## Datasys

COMPUTER CORPORATION  
BUY • SELL • LEASE • TRADE

### Hewlett-Packard

- SYSTEMS
- UPGRADES
- MEMORY
- PERIPHERALS

Call Today 800-DATASYS  
(328-2797)

Dallas Oklahoma City  
(214) 931-9195 (405) 947-0475  
FAX (214) 931-9619 FAX (405) 947-3046

CIRCLE 484 ON READER CARD

## HEWLETT PACKARD

### Depot Repair

- Expert Depot Repair
- 5 Day Turnaround
- Emergency Exchange Program



# 1-800-837-0061

216-365-9950 Ohio  
216-365-3916 FAX

CIRCLE 158 ON READER CARD



## GREAT PRICES AND DISCOUNTS TO 30%

With Trilogic's trade up program, get significant discounts.

Buy any series 700/800  
Get credit on Sun SPAC stations,  
DEC stations, SGT workstations.

Call for Details  
**1-800-346-2933**

Fax 412-745-5950

CIRCLE 223 ON READER CARD

## HEWLETT-PACKARD

1000 • 3000 • 9000

BUY • SELL • RENT • LEASE

MAINTENANCE

PROCESSORS • PERIPHERALS • SYSTEMS

## EURODATA INC.

(613) 745-0921

Fax: (613) 745-1172

2574 Sheffield Road, Ottawa, Canada K1B 3V7

CIRCLE 283 ON READER CARD

WORKSTATIONS

Get more for your money from a full service supplier with free tech support and an inventory *unmatched* in the industry.

- Depot repair
- Advance exchanges
- Crash kits & spares
- Hardware sales
- Used
- Remanufactured
- Custom configurations
- Board level to complete systems
- Systems
- Monitors
- Drives
- Printers
- Keyboards
- Power Supplies
- Network Products

Sales & Service Support since 1978

## CRISIS

1-408-270-1100 International & in CA  
800-726-0726 • FAX 408-270-1183

crisis@netcon.com



CIRCLE 211 ON READER CARD

## BUY • SELL • TRADE

COMPLETE HP SYSTEMS AVAILABLE  
ALL PERIPHERALS

*All items in stock — immediate delivery  
All warranted to qualify for manufacturer's maintenance.*

## ConAm Corporation

Canada/US 800-926-6264

California 310-419-2200

FAX 310-419-2275

CDLA

RENT • LEASE • MAINTENANCE

CIRCLE 210 ON READER CARD



BUY ■ SELL ■ SERVICE ■ TRADE



RENT ■ LEASE

We accept MasterCard and Visa.

**1-800-765-0331**

Los Angeles ■ Washington, D.C. ■ Tampa

CIRCLE 206 ON READER CARD

## HEWLETT-PACKARD 9000 IT'S OUR SPECIALTY.

- |                |                |
|----------------|----------------|
| PRINTERS       | PLOTTERS       |
| LaserJets      | DraftPros      |
| DeskJets       | DraftMasters   |
| Rugged Writers | Electrostatics |
|                | DesignJet      |

### WORKSTATIONS

Series 200, 300, 400, 700

We offer large discounts, outstanding service and immediate delivery. Call us before you buy a printer or plotter!



4117 2nd Avenue South  
Birmingham, AL 35222

(205) 591-4747 or (800) 638-4833

Fax: (205) 591-1108

CIRCLE 233 ON READER CARD

## TSA IS THE PLACE FOR HEWLETT-PACKARD

# RENTALS

- 9000 700-400-300 Series
- 1000 A-E-F Series
- X Terminals
- OM Series
- Plotters
- 6-12 Mo. Lease/Purchase
- Laserjets
- Paintjets
- Disc Drives
- P.C.'s
- Data Acquisition
- Test Equipment

**1-800-422-4872**

713/935-1500 Fax 713/935-1555 Email:info@tsa.com

HEWLETT-PACKARD AUTHORIZED RENTAL COMPANY



2040 West Sam Houston Parkway N. • Houston, Texas 77043

HP RENTALS ■ HP RENTALS

CIRCLE 228 ON READER CARD



**DISCOUNTS TO 90%  
BUY • SELL • RENT  
LEASE • TRADE**

Unique - Special - Vintage  
Obsolete - Scarce - Rare  
Refurbished - Hard-to-Find  
**HP 1000 • 3000 • 9000  
AND TEST EQUIPMENT**

Free surface shipping!  
Call 509-662-9039

**ELECTRONIC  
SERVICES, INC.**

FAX 509-662-8271

Since 1973

CIRCLE 212 ON READER CARD

**Allon Computer, Inc.**

*Quality, Integrity, Reliability  
Since 1989*

Buying and Selling HP 1000/  
3000/9000 Terminals, Plotters,  
Disc Drives, PCs

**1-800-808-0851**

**Fax: 813-724-6567**

**Direct Dial: 813-724-6566**

CIRCLE 251 ON READER CARD



**HARBORSIDE  
COMPUTER  
MARKETING**

Buy/Sell/Lease All  
**HEWLETT PACKARD!**

Harborside Marketing, Inc.  
1010-A Park Court  
Safety Harbor, FL 34695  
813-799-2009  
FAX 813-791-6699

CIRCLE 215 ON READER CARD

HP Re-Marketing Specialists Since 1978

**9000**

**WE BUY  
AND SELL:**

700, 400 & 300 WORKSTATIONS  
MASS STORAGE  
MONITORS  
PLOTTERS

**MONTEREY BAY  
COMMUNICATIONS**

Tel: 408-429-6144  
Fax: 408-429-1918

CIRCLE 229 ON READER CARD

**I/O Data  
Systems,  
Inc.**

Buy - Sell - Lease - Trade  
**HEWLETT-PACKARD**  
Systems, Workstations  
Peripherals, Solutions

**(216) 835-2211**  
27378 W. Oviatt  
Bay Village, OH 44140  
FAX: (216) 835-0220

CIRCLE 272 ON READER CARD



Get the Hottest Prices  
on the market today  
**HP's TERMINALS**

C1064-A AMBER  
C1064-G GREEN \$585  
C1064-W WHITE

For more information & pricing  
CALL:

**PHONE (800) 346-2933  
FAX (412) 745-5950**

CIRCLE 295 ON READER CARD

**QUALITY HP  
EQUIPMENT  
WITHOUT THE  
HP PRICE**

**DON'T UPGRADE YOUR HP SYSTEM  
UNTIL YOU GET A SECOND OPINION  
FROM THE SECOND SOURCE FOR  
HEWLETT-PACKARD**

**1000-3000-9000 EQUIPMENT**  
Consult with us about cost-saving alternatives  
• Complete Configurations  
• Individual CPUs-Peripherals  
• Memory Upgrades and Feature Enhancements  
• Classic and Spectrum Equipment

**WE BUY**

Highest Prices Paid

**WE SELL**

\*All Items Sold Are Guaranteed for HP Maintenance  
\*Short and Long Term Leases Available

**WE TRADE**

Over 1000 satisfied Hewlett-Packard users are our  
customer references throughout the  
United States, Canada, Europe, and the Far East.



C.S.U. Industries Inc.  
207 Rockaway Turnpike Lawrence, NY 11559  
Ask for Mordr: **(516) 239-4310**  
**FAX (516) 239-8374**



CIRCLE 205 ON READER CARD

**SHERLOCK  
Systems & Solutions**

Sensible Solutions To The Mysteries  
Of Your Hardware Requirements

**Solutions ... Not Just Answers**

We inventory a large line  
of CPU'S and peripherals.  
MPE • MPE-XL • UNIX  
Buy • Sell • Trade • Lease



CALL  
**1-800-827-6804**  
FAX  
**216-848-4515**

CIRCLE 491 ON READER CARD

**TUNE INTO HP**  
Pre-owned Equipment

3000                      Peripherals                      9000  
•••••                      •••••                      •••••  
BUY                      SELL                      TRADE

WORKSTATIONS  
CPUs  
DISC & TAPE DRIVES  
TERMINALS & PRINTERS  
3000/9000 MEMORY



(Phone #) 805-489-1564  
(Fax) 805-481-3799

CIRCLE 219 ON READER CARD

**NORCO COMPUTER SYSTEMS, INC.**

*Hewlett-Packard Quality  
at a NorCo Price*

**1000 • 3000 • 9000 • 250**

**BUY—SELL  
TRADE—LEASE**  
Processors, Peripherals  
and Systems

21337 Drake Road  
Cleveland, OH 44136-6620  
FAX: 216-572-0636  
216-572-4040 1-800-892-1920  
(Outside Ohio)

CIRCLE 221 ON READER CARD

The HyPoint Advantage . . .  
**INVENTORY**

“Specializing in Full  
Line of  
HP 3000 Products”

Buy ■ Sell ■ Trade ■ Lease

HyPoint Technology  
600 Ken Mar Drive  
Cleveland, OH 44147

**1-800-231-5500  
216-526-0323**

CIRCLE 217 ON READER CARD

*The "HP Experts" for Over 25 Years!*



Migration assistance with new HP hardware, system benchmarking, software testing, conversions, system rentals, outsourcing, and disaster recovery services.

**Computer Solutions, Inc.  
201-672-6000**

CIRCLE 209 ON READER CARD

**ADAGER**

The Adapter/Manager for  
IMAGE/SQL Databases  
obsoleted the need for database  
reloads back in 1978 and became  
the de facto standard for  
HP3000 systems worldwide.



Sun Valley, Idaho 83353-0030 U.S.A.  
Toll-free from Canada and the USA:  
Tel 800 533-7346 Fax 800 247-7346  
From other parts of the world:  
Tel 208 726-9100 Fax 247-8191

CIRCLE 121 ON READER CARD

**HP 3000**

Buy — Sell — Trade  
Hewlett Packard Equipment  
CALL

**713-466-9455  
(Fax) 713-466-9454**

**S**urety  
ystems

7044 Empire Central  
Houston, TX 77040

CIRCLE 226 ON READER CARD

**INFORMATION**

**Rates:**

Size: 1/9 page — 2<sup>3</sup>/<sub>16</sub>" x 2<sup>3</sup>/<sub>4</sub>"

**COLOR NOW AVAILABLE  
\$100**

- 1 time: \$550                      6 times: \$440
- 3 times: \$495                    12 times: \$385
- Typesetting and composition available.
- Camera ready mechanical required.

**For more information call:  
Lisa Merck  
(708) 655-0100**

**ENTRUST YOUR SOLID REPUTATION TO OURS.**

**WTW**, a leader in systems integration and information consulting to many Fortune 500 companies is seeking highly-qualified professionals to work with us in solving business problems through technical solutions.

Apply your experience in:

- HP3000 COBOL                    ■ Powerhouse
- X-Windows/MOTIF             ■ Speedware
- HP9000 HP-UX                  ■ ASK MANMAN
- Telephony/CTI                  ■ ORACLE/SYBASE
- ChemLMS LAB/UX              ■ PowerBuilder

Send resumes to:



**WESSON, TAYLOR, WELLS AND ASSOCIATES, INC.**  
P.O. Box 12274-HPP94  
Research Triangle Park, NC 27709-2274  
(919) 941-0081 or (800) 833-2894  
Fax (919) 941-0082 • CSERVE 73321, 3536  
An Equal Opportunity Employer

CIRCLE 201 ON READER CARD

**THE HP PLACEMENT SPECIALISTS**

**INFOTECH SEARCH GROUP, LTD.**

◆ EXPERIENCED PROFESSIONALS WITH A PROVEN TRACK RECORD OF SUCCESS IN PLACING HP TALENT

**NED POOLE  
BRIAN DONOHUE**

**910-538-0123  
FAX# 910-538-0126**

PO BOX 2195, BURLINGTON NC 27216-2195

**“PROFESSIONALS SERVING PROFESSIONALS”**

CIRCLE 109 ON READER CARD

**HP CAREERS NATIONWIDE**

**EMPLOYMENT MARKET IS STRONG!!!**

Many opportunities for those with the following skills:

- MPE or UNIX Systems Management
- POWERBUILDER, UNIFACE
- SYBASE / ORACLE / INFORMIX
- ASK, AMAPS, BOSS, MOMS
- Networking - LAN, WAN
- C, C++, Progress
- COBOL, SPEEDWARE, POWERHOUSE

Call - Amos & Associates



**Diane Amos, C.P.C.**

633-B Chapel Hill Road  
Burlington, N.C. 27215  
(910) 222-0231  
FAX: (910) 222-1214

CIRCLE 204 ON READER CARD



# ADVERTISERS INDEX

Reader Service Number		Page
182	Fourth Shift .....	11
163	Aldon Computer Group .....	50
174	Andersen Consulting .....	35
286	API International .....	46,47
242	Artecon .....	COVER 2
129	Avnet Computer .....	12,13
103	BBN Software Products .....	17
171	Black River Computers .....	50
479	Client Systems, Inc. ....	6
454	CMI .....	49
117	Cognos Corporation .....	19
232	Concorde Technologies .....	64
213	CSU Industries .....	51
254	Data General .....	41
190	FutureSoft .....	45
464	GE Rental Lease .....	14
173	Herstal Automation, Ltd. ....	25
119	Herstal Automation, Ltd. ....	67
459	Hewlett Packard/CSG .....	15
	Hewlett Packard/CSG .....	5
156	Hummingbird Communications Ltd. ....	23
122	IEM, Inc. ....	2
218	Insignia Solutions Inc. ....	22
150	Interex .....	59
260	Island Software .....	51
281	Kingston Technology Corp. ....	1
463	Lawson Software .....	COVER 3
472	MiniSoft, Inc. ....	4
244	National Instruments .....	10
488	Newport Digital Corporation .....	9
277	Pro Software .....	63
178	Pure Software, Inc. ....	60,61
268	Quest Software .....	31
245	Texas ISA, Inc. ....	63
153	TODAY Systems .....	49
477	Tryonics Inc. ....	27
138	Technical & Scientific Applications (TSA) .....	58
499	Unison/Tymilabs .....	37
248	UNIX EXPO .....	66
225	Visual Numerics .....	33
143	Vital Soft Incorporated .....	43
115	Walker Richer Quinn/Reflection .....	COVER 4
194	Western Scientific .....	53
194	Western Scientific .....	55
480	Western Scientific .....	57
253	Work Station Solutions .....	56
263	WRQ .....	21
	WRQ .....	62

# ADVERTISING SALES OFFICES

Leslie Ringe, Publisher  
(215) 643-8000

## NEW ENGLAND & EASTERN CANADA (617) 861-1994

Alonna Doucette, Regional Sales Manager  
238 Bedford St., Ste. 3  
Lexington, MA 02173  
FAX (617) 861-7707

## MID-ATLANTIC & SOUTHEAST (401) 351-0274

Edward Marecki, Regional Sales Manager  
One Richmond Square  
Providence, RI 02906  
FAX (401) 351-0276

## MIDWEST & SOUTH (708) 655-0100

Bettina Fischmann, Regional Sales Manager  
15 Salt Creek Ln., Ste. 103  
Hinsdale, IL 60521  
FAX (708) 655-0755

## NORTHERN CALIFORNIA, NORTHWEST, WESTERN CANADA (415) 873-3368

Judy Courtney, Regional Sales Manager  
903 Sneath Ln., Ste. 220  
San Bruno, CA 94066  
FAX (415) 873-6608

## SOUTHERN CALIFORNIA & SOUTHWEST (818) 577-5970

Karin Altonaga, Regional Sales Manager  
446 S. Anaheim Hills Rd., Ste. 161  
Anaheim Hills, CA 92807  
FAX (714) 974-0555

## INTERNATIONAL (215) 957-1500

Leslie Ringe, Regional Sales Manager  
1300 Virginia Dr., Ste. 400  
Fort Washington, PA 19034  
FAX (215) 643-8099

Cleryl DeMaiores, Marketing Services Manager  
Lisa Hartman, Marketing Services Assistant  
Mary Browarek, Card Deck Manager  
Cathy Dodies, List Rental Manager



1300 Virginia Dr., Ste. 400  
Fort Washington, PA 19034  
(215) 643-8000 FAX: (215) 643-8099

# Think Again Comrade

## Laws Of Supply And Demand Should Be Followed By IS



By Gordon  
McLachlan

Socialism is dead, right? Well, maybe it's time for IS departments to get the message and start behaving like capitalist pigs instead of Soviet bureaucrats.

Any economy is bound by the fact that money and goods are scarce. Economic systems differ in the way they ration those resources. Capitalism lets the free market determine who gets what. Soviet-style socialism left rationing in the hands of its central planning bureaucracy.

In a free market, if demand is higher than supply, prices go up. If supply exceeds demand, prices go down. What regulates a free market is competition. If demand and prices are high, new suppliers enter the market, which increases supply and eventually drives prices down. If supply grows too much, prices drop substantially, forcing inefficient producers to drop out of the market. That makes risk unavoidable in a free market economy.

The 18th century economist Adam Smith called these market forces the "Invisible Hand of God." But it's not easy to put your faith in an invisible hand — even God's. The idea of a free market determining our future can be scary, and human conceit being what it is, when things don't seem to be turning out the way we expect them to, we try to give the hand a little help.

Central planning and control looks like a scientific methodology compared to the anarchy of a free market. Too bad it doesn't work. Unfortunately, that seems to be the approach that IS insists on taking. Instead of letting the Invisible Hand do its thing, we want to eliminate risks by planning and standardizing everything to death.

So IS organizations spend too much time worrying about the future and plotting their courses, when those things are really out of their hands. Standards are consistently and repeatedly set in the marketplace, but we persist in believing that we can manage them rationally and scientifically. That is conceit, and largely a waste of time. We ration systems out to our users by first determining what *we* think they ought to want, and then delivering these systems when *we* can find the time, resources, and finally get around to it.

The free fall of hardware prices reminds me of the old USSR, where you could get a loaf of bread for less than the cost of the grain it took to make it. In fact,

Soviet farmers were known to feed bread to their animals, rather than feed, because it was so cheap. Yet you couldn't find a roll of decent toilet paper and had to get on long waiting lists to get an apartment or a telephone.

Well, you can buy all the cheap PCs and workstations you want, but unless your users are happy with their spreadsheets and word processors, they're out of luck. Need an application? Get on the waiting list while the planners figure out what they think you need.

I think we ought to let the free market play a little more prominent role here. Let's try something radical and let users start paying what it really costs to develop systems and let them decide what we should do.

First off, IS organizations have to start charging back for the services they provide. Too many don't, partly because it's too much trouble to figure out what should be charged, and partly because if they do charge back, users might start demanding to get their money's worth.

This approach is not without its problems: IS departments might actually have to compete with outsiders for their users' computing dollars, and start delivering efficient service; and users would have to start thinking about what they were really asking for. It's amazing how restrained requirements can be when users see what development really costs.

Management has made it known it won't tolerate quixotic excursions that result in failure by the way it goes through IS managers. The two-year tenure you can expect in that position is about as long as you would last as head of a collective farm under one of Stalin's Five Year Plans. But, we have to be allowed to take some risks.

So I guess it's nice to be able to pretend there is such a thing as a free lunch, and just bury the real costs of IS throughout the corporation. Never mind that IS costs are soaring despite cheap hardware and nobody seems satisfied. The IS motto seems to be that of the Russian factory laborer: You pretend to pay us, and we'll pretend to work for you.

*McLachlan's Internet address:  
mclachlan@cardinal.com*





# HOW TO UNRAVEL THE CLIENT/SERVER MYSTIQUE.

**F**irst, accept that there is no mystique. Rather, there are hordes of slightly frantic software companies content to have you believe that effective open system solutions remain elusive while they rush to understand, develop, and market their interpretation of client/server. Then there's Lawson Software.

## An Open Systems Foundation

At Lawson Software, we've been committed to open systems since our company was founded in 1975. We've always believed that to be a valuable business partner, an applications provider must offer choices for business strategy development. So for us, client/server isn't a new phenomenon. Instead, it's the next logical step in our development. And it exists today – fully developed and fully functional – in the latest release of our enterprise-wide, cross-industry, world-class business application software.

## A True Client/Server Solution

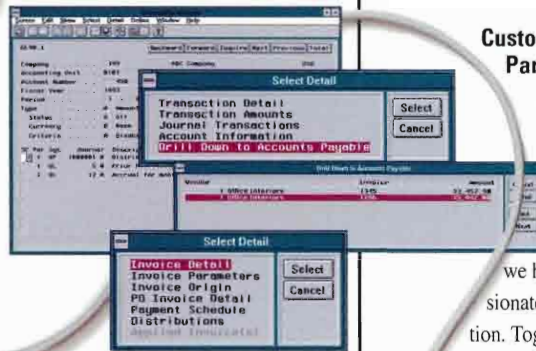
The truth is, client/server takes on a special meaning for each individual business computing environment. That's why we've structured our client/server solution as a comprehensive 3-tier architecture, delivering you maximum flexibility in hardware, database and user interface. It's why Lawson's products run across platforms like the AS/400 as well as UNIX systems such as the RS/6000 and HP9000. And it's also why we feature seamless support for a variety of leading databases. In short, we offer options that allow you to make the decisions. Based on your

existing hardware configurations and your plans for future development, you choose to place the components of client/server where they will deliver the greatest value and performance.

## Optimized Information Management

Lawson's efficient use of technology leads to a system with the scalability demanded in today's changing world.

We incorporate the latest GUI technologies, creating a user-friendly environment that reduces training time. Individual users can manipulate windows, icons and tool bars to create a personal work environment that increases productivity. In addition,



Lawson has revolutionized the way users access information with our comprehensive "drill-around" capability: now a single click of the mouse allows transparent access to data from multiple applications and platforms. And finally, to truly maximize your options, Lawson has maintained the ability to interface our applications using character-based terminals.

## Worldwide Computing Flexibility

Lawson's single, worldwide product set – featuring all the freedom of our flexible client/server architecture – means the ultimate in simplicity for large, international



companies functioning in a variety of intra-national markets. You'll find capabilities like support for multiple languages, currencies, tax codes and rates, as well as a variety of date and reporting formats. So whether your business is managing one site or sites around the globe, you can turn to Lawson Software for one total solution.

## Customer-Focused Partnership

Lawson Software has always been focused on leading edge technology. And we have always been passionate about client satisfaction. Together, these two commitments have resulted in truly flexible business solutions created with your needs in mind. We'd like the chance to demonstrate this to you. You'll see how – from our system architecture to

our award winning client services – Lawson Software really does unravel the client/server mystique.

For more information call  
1-800-477-1357 ext. 835.

**LAWSON**  
Software

Running the World's Best Companies™

All product names referenced herein are trademarks of their respective companies.

LAWSON MATERIALS MANAGEMENT SYSTEM • LAWSON HUMAN RESOURCES SYSTEM • LAWSON DISTRIBUTION MANAGEMENT SYSTEM • LAWSON ACCOUNTING SYSTEM



Introducing

# TCP/IP for WINDOWS

## Done right by Reflection.

**Announcing** the Reflection Network Series® for Windows—the first TCP/IP for Windows developed specifically for corporate networks. Designed from the ground up for performance, reliability, and ease of use.

- **Powerful network management**—An extensive set of diagnostic and monitoring tools, including SNMP MIB II, makes network management easier than ever before.

- **True open connectivity**—100% Windows Sockets compatibility lets you run industry-wide applications. Plus, Reflection® gives you sophisticated applications and transports like drag-and-drop FTP, LPR/LPD, NS/VT and LAT.
- **Optimal performance and reliability**—Reflection's advanced cooperative VxD/DLL design delivers superb performance and ensures data integrity.

Call today. Reflection means business. It's TCP/IP done right.

**Try the Reflection Network Series  
free for 30 days!**

**Call 800-92-NETWORK**  
In Europe, call +31.70.375.11.00  
Outside Europe, call 206.217.7100

  
Making PC Connections Count

Walker Richer & Quinn, Inc. / 1500 Dexter Avenue North, Seattle, Washington 98109 / FAX: 206.217.0293 / Buitenhof 47, 2513 AH Den Haag, The Netherlands / FAX: +31.70.356.12.44  
Reflection and Reflection Network Series are registered trademarks of Walker Richer & Quinn, Inc. All other trademarks are the property of their respective holders.

**CIRCLE 115 ON READER CARD**