

HP

MARCH 1994

Professional

- MIDDLEWARE: HERE, THERE, EVERYWHERE
- TAKING THE HP-UX HELM
- NETWARE SIGHTED ON PA-RISC HORIZON



The Search For New Ports

Our New Family of Subsystems Makes All Others Sub-Standard.



Peripheral Visionaries.
Artecon's innovative
Lynx peripheral line sets
a new standard in mass
storage subsystems.

Introducing the new *Lynx*™ family of 3.5" disk and tape subsystems with:

- ▲ Support for any 3.5" fast-narrow or fast-wide SCSI-2 device.
- ▲ A wide range of standard disk & tape solutions from 200MB - 2.1GB disk & 2GB - 4GB 4mm tape.
- ▲ Slide & Lock legs for interlocking "Lego style" stackability both horizontally & vertically.
- ▲ Internal PC cards & external jumpers instead of troublesome tangles of SCSI & AC cables.
- ▲ FCC Class B, UL, TUV, & CSA certifications.
- ▲ LCD & keypad option for SCSI target ID setting/display, status & diagnostic messages.
- ▲ Hot plug removable device option with front removable power supply.



Visionary Design.
Jumper blocks reduce
SCSI length, AC clutter
and problem prone cables.

How *Lynx* Stacks Up.

Interlocking legs rivet *Lynx* units together, yet snap apart with finger pressure. Stack up to 7 modules horizontally, or vertically, with zero draft tolerance. Mix any combination of devices within each stack to give the performance you need at a price you can afford.

Look inside a *Lynx* and you'll find printed circuit cards rather than cables for both SCSI and power. Externally, you'll see specially designed SCSI and AC jumper blocks – all to give you a cleaner, more reliable, mass storage subsystem. SCSI bus length is now measured in inches rather than feet.

At only 2.5"(H) x 6.75"(W) x 10.75"(D) and weighing less than 6 lbs, *Lynx* gives you more capacity per square inch of desktop than ever before.

Tested, Proven, Reliable.



Visionary Engineering.
Interlocking legs snap
together for vertical or
horizontal stacking. Optional LCD
rotates for proper viewing regardless
of orientation.

As with all Artecon products, *Lynx* is backed by the best quality, warranty and service in the business.

- ▲ 5 year limited warranty, including on-site service for the first year.
- ▲ **Free** disk management software for disks.
- ▲ **Free** backup software for tape devices.
- ▲ Pre-formatted for your Unix workstation.



***Lynx* LX-1100** family of economical fixed disk & tape systems with a 40 watt autosensing power supply, cooling fan & filter, internal PC boards, external jumpers & modular stackability.

***Lynx* LX-1400** family adds an LCD & keypad to display status & diagnostics, set target ID, and power on/off. LCD is easily rotated for proper display in any configuration.

***Lynx* LX-1500** family adds hot plug removable disk and tape drives, plus a front removable power supply for high availability or secure operations.

Patents pending.

**Call today for the new
standard in subsystems!**

**1-800-USA-ARTE
1-800-872-2783**

See Us at Uniform, Booth #183

Artecon Canada, Inc. (416) 487-7701 ▲ Nihon Artecon, Ltd. 81-3-3280-5030 ▲ Artecon, S.A. 33-1-69-1818-50

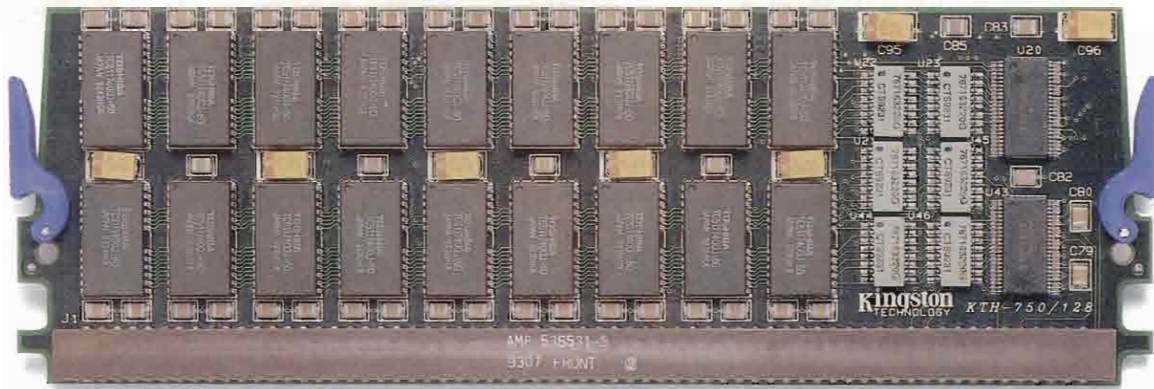
Artecon and the Artecon logo are registered trademarks of Artecon, Inc. All other trademarks are proprietary to their respective manufacturers. Artecon, Inc. operates under a policy of Equal Employment Opportunity and is in compliance with Executive Order #11246 as amended.

CIRCLE 242 ON READER CARD

Artecon

PO Box 9000, Carlsbad, CA 92018-9000
(619) 931-5500 FAX (619) 931-5527
email: sales@artecon.com

A Member of the Nordic Group of Companies



Now Shipping!
 HP/Apollo Series 9000 Model 750, 755 Memory

KTH 750/128
 32, 64, 128MB

The HP Memory To Remember



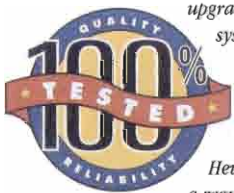
Hewlett-Packard Memory Enhancements

Kingston's HP and HP/Apollo memory enhancements lead the industry in competitive pricing, reliability, compatibility, selection and availability. Our workstation memory is backed by a lifetime warranty and free, comprehensive technical support. With Kingston HP and HP/Apollo compatible memory upgrades, you may spend less, but you truly get more.



Guaranteed Compatibility

As a Hewlett-Packard Channel Partner, we guarantee absolute compatibility of our memory upgrades with HP and HP/Apollo systems. We test every memory upgrade with HP's own system diagnostics and operating system. Our memory upgrades are so compatible that Hewlett-Packard itself is a regular customer!



HP/Apollo Memory	
HP 3000 Business Systems 9X7 Series	16MB, 32MB and 64MB kits
HP/Apollo 9000 400 Series	4MB, 8MB, 16MB and 32MB kits
HP/Apollo 9000 700/RXstations	1MB, 2MB, 4MB and 8MB modules
HP/Apollo 9000 700 Series	8MB, 16MB, 32MB, 64MB and 128MB kits
HP 9000 Business Servers 8X7 Series	16MB, 32MB, 64MB and 128MB kits

Kingston has a full line of memory and storage upgrades for most popular HP and HP/Apollo workstations. With new products being announced every week at Kingston, give us a call for our latest offerings.

Kingston Storage Products

Having built our business around high quality computer memory, we've gone the next step and developed a solid family of storage products. Whether you need internal or external, fixed or removable storage solutions, Kingston has the reliable products for your system.



For More Information

Call our workstation memory experts at **(800) 835-2545** or **(516) 673-6300** (East coast office). We'll be happy to answer any questions you have about our memory upgrades for Hewlett-Packard, Data General, Digital Equipment, IBM, NeXT, Silicon Graphics, Solbourne, Sun and other popular workstation manufacturers.



Kingston Makes Memory For Workstations From These Manufacturers:

- HP
- Data General
- Digital Equipment
- Sun
- NCD
- IBM
- NeXT
- Silicon Graphics
- Solbourne
- Tektronix



THE INSIDE NAME IN UPGRADES

17600 Newhope Street, Fountain Valley, California 92708 (800) 835-2545 (714) 435-2667 Fax (714) 435-2618

CIRCLE 281 ON READER CARD

Attended Backup:

As much as you'd like to, you can't leave your car while traffic is backed up. But you can leave the office while your system is backing up—with reliable, affordable solutions from IEM.

See Us at Executive Interex,
Booths #322/324

Unattended Backup:



- 4mm, 8mm, QIC
- SCSI & HP-IB
- Standalone drives, autofeeders, and network backup software

IEM manufactures the broadest range of solutions for your backup and data transfer needs.



One Source, Many Solutions

IEM is the manufacturer of the largest line of HP third-party peripherals.

CIRCLE 122 ON READER CARD

In the U.S. and Canada:

IEM, Inc., P.O. Box 1889
Fort Collins, CO 80522 USA
Phone: (1) 303-221-3005
(1) 800-321-4671
Fax: (1) 303-221-1909

In the United Kingdom:

IEM Europe, Ltd., Colorado House,
Cromwell Park, Banbury Road,
Chipping Norton, Oxfordshire. OX7 5SR.
Phone: +[44] 0608 645000
Fax: +[44] 0608 645155

All others:

IEM International Sales
1629 Blue Spruce Drive
Fort Collins, CO 80524
Phone: (1) 303-221-3005
Fax: (1) 303-221-1909

Contents

March 1994

Vol. 8, No. 3

In The Midst Of It All

By Bill Sharp

34

Dating back over a decade, Middleware, in the simplest terms, resides between your operating systems and your applications. However, users are learning that Middleware is anything but simple.

NetWhere?

By Rosemary DeVere

40

With Netware for HP's PA-RISC announcement looming, HP provides insight into its design, along with its impact within your enterprise.

The ABCs Of HP-UX Administration

By Marty Poniatowski

46

Originally designed to sit on the engineer's desk, UNIX has moved into the commercial mainstream. Consequently, much of HP's proprietary system's esoteric functionality is now available on HP-UX. But what about basic HP-UX administration?

COLUMNS

UNIX: RISC Management

By Miles B. Kehoe

Understanding The Difference Between PA-RISC 1.0 and 1.1 54

Networking: Playing Peek-A-Boo With E-mail

By Tim Cahoon

For Your Eyes Only? You'd Better Know Your Company's Policies 56

Managing Your HP 3000: Answers At The Speed Of Light

By John P. Burke

HP LaserROM/PC Is Essential For Managing HP 3000 Systems 58

And Another Thing: Outsource of Controversy

By Gordon McLachlan

Overseas Programming Is Here To Stay. What Are You Going To Do? 72

Editorial	7
Letters To The Editor	14
Industry Watch	8
INSites	30
New Products	62
Reader Information	65
Product Showcase	68
Career Opportunities	70
Advertiser Index	71

PRODUCT WATCH:

Grafpoint's XALT Office	16
Riviera's OVERDRIVE3000	18
Progress' Progress 7	20
Colorsoft's OPENprint	22

STRATEGIC DIRECTIONS:

Workstation Solutions Inc.	24
Multiview Inc.	26
Bradmark Technologies Inc.	28

HP Professional



GE Rental/Lease
Computers for Business

**Workstation Rentals
for Business**

Project Ahead? Station Yourself With Us.

- Cost-effective rental of newest SUN, HP and Tadpole workstations:
 - Sun SPARCstation 10 - HP Model 735
 - Sun SPARCserver 1000 - HP Model 715/75
 - Tadpole SPARCbook 2 - Plus many others!
- Large inventory - overnight delivery available
- Major credit cards accepted

Call 1-800-GE-RENTS!



CIRCLE 464 ON READER CARD

UNIX is a registered trademark of AT&T in the U.S.A. and in other countries.

MS-DOS is a trademark of Microsoft Corp.

Macintosh is a trademark of Apple Computer Inc.

X Window System is a trademark of MIT.

Windows is a registered trademark of Microsoft Corp.

Windows NT is a registered trademark of Microsoft Corp.

NetWare is a registered trademark of Novell Inc.



EDITOR-IN-CHIEF Charlie Simpson
TECHNICAL EDITOR George A. Thompson
ASSISTANT EDITOR Deborah Schwartz

TECHNICAL EDITOR Bill Sharp
APOLLO EDITOR Fred Mallett
HP 3000 EDITOR John P. Burke
NETWORKING EDITOR Tim Cahoon
PC/UNIX EDITOR Miles B. Kehoe
SOFTWARE ENGINEERING EDITOR Richard Riehle
CONTRIBUTING EDITOR Gordon McLachlan
INTERNATIONAL EDITOR Marsha Johnston
CONTRIBUTORS Sam Dickey, Marty Poniatowski, Rosemary DeVere

TECHNICAL SERVICES

DIRECTOR OF TECHNICAL SERVICES David B. Miller

DESIGN & PRODUCTION

ART DIRECTOR Al Feuerstein
ASSOCIATE ART DIRECTOR Jennifer Barlow
DESIGNER Patty Wall

PRODUCTION MANAGER Jean Lait

CIRCULATION

CIRCULATION MANAGER Dianna Martin
DIRECTOR OF FULFILLMENT Marjorie Pitrone
CIRCULATION CONSULTANT Carrie Eisenhandler
DATABASE SUPERVISOR Doreen Schack

MARKETING

PROMOTIONS DIRECTOR Timothy M. Kraft
MARKETING MANAGER Gloria Goodwin
SENIOR GRAPHIC DESIGNER Thomas Owen
GRAPHIC DESIGNER Mark Broomell

PUBLISHER Leslie Ringe

CARDINAL BUSINESS MEDIA, INC.

PRESIDENT AND CHIEF EXECUTIVE OFFICER:
Robert N. Boucher
CHIEF FINANCIAL OFFICER *Thomas C. Breslin*
EXECUTIVE DESIGN DIRECTOR *Leslie A. Carniso*
CIRCULATION DIRECTOR *Patricia Herron*
DIRECTOR OF HUMAN RESOURCES *Carolyn Head*
CONTROLLER *Andrew D. Landis*
EXECUTIVE CONSULTANT *Carl B. Marbach*

For more information on how to contact your sales representative, see page 71. For subscription information and address changes, call (215) 957-4269. Editorial, advertising sales and executive offices at 101 Witmer Rd., Horsham, PA 19044 ■ (215) 957-1500 Corporate FAX (215) 957-1050. To reach staff listed on masthead via UUNET, send MAIL to: LAST.NAME@CARDINAL.COM

HP PROFESSIONAL ISSN 0896-145X is published monthly by Cardinal Business Media Inc., 101 Witmer Rd., Horsham, PA 19044. Subscriptions are complimentary for qualified U.S. and Canadian sites. For reprints, contact Reprint Management Services, 505 E. Airport Rd., Lancaster, PA 17601; (717) 560-2001, Fax (717) 560-2023. Second Class postage paid at Horsham, PA 19044, and additional mailing offices. POSTMASTER: Send all correspondence and address changes to HP PROFESSIONAL, P.O. 616, 101 Witmer Rd., Horsham, PA 19044. COPYRIGHT © 1993 by Cardinal Business Media Inc. All rights reserved. No part of this publication may be reproduced in any form without written permission from the publisher. All submitted manuscripts, photographs and/or artwork are sent to Cardinal Business Media, Inc. at the sole risk of the sender. Neither Cardinal Business Media, Inc. nor HP PROFESSIONAL magazine is responsible for any loss or damage. HP PROFESSIONAL is an independent journal not affiliated with Hewlett-Packard Company. HP and Hewlett-Packard are registered trademarks and HP PROFESSIONAL is a trademark of Hewlett-Packard Company.

Printed in U.S.A.





Hewlett-Packard computer systems help General Mills crunch their delivery schedules. So you get your Wheaties even fresher.

"Not only is the HP 3000 open, but it's an excellent, easy-to-use transaction-processing system for business-critical operations."

— Mike Meinz,
General Mills, Information Systems

The demand for Wheaties[®], Cheerios[®] and other General Mills' products is huge. Which puts enormous demands on the company's distribution and inventory control systems.

They needed a way to deliver faster, while making sure each shipment was complete and contained only the freshest products. They solved the problem crisply by porting a UNIX[®]-based warehouse management application to HP 3000 computers.

This is helping General Mills perform like a champion. The HP 3000s, located in all nine distribution centers, are managed remotely, without extra staff. And they provide near 100% uptime. Which takes the worry out of running critical applications.

If you need a faster way to market, call 1-800-637-7740, Ext. 7806 for a video case study. We think it will whet your appetite for more.

Think again.



 **HEWLETT
PACKARD**

NOW THERE'S A NETWORKED SYSTEMS
MANAGEMENT SOLUTION FOR UNIX
THAT WASN'T BORN YESTERDAY



UNIX as a commercial data processing environment is still in its infancy. But that doesn't mean you have to settle for UNIX systems management tools that aren't grown up.

Unison-Tym labs is pleased to announce Maestro for UNIX, the first full-featured batch job scheduling and workload management solution for UNIX systems. Maestro has been solving batch job management problems in demanding HP 3000 commercial environments since 1986, and is currently installed on thousands of systems worldwide.

Maestro for UNIX enables systems managers or administrators to automate network job scheduling, tracking, and monitoring to increase throughput and reduce processing errors. It can schedule jobs anywhere on your network according to customized business calendars, in addition to date, day of the week, and time.

You can make job initiation dependent on the successful completion of other jobs, the existence of needed files, user response to a prompt, or the availability of hardware or data resources. The Maestro master console on the server provides a single interface for all monitoring and control.

MAESTRO—NOW ON UNIX

Maestro runs in AIX, HP-UX, Sun Solaris, NCR, and HP-MPE environments, and on heterogeneous networks.

Maestro for UNIX treats your batch job scheduling and workload management as more than just child's play. Call us today for a complimentary demonstration copy or more information.



YOUR OPERATIONS
MANAGEMENT PARTNERS

HEADQUARTERS: 408/245-3000, Fax 408/245-1412

TYMLABS DIVISION: 512/478-0611, Fax 512/479-0735

EUROPEAN HEADQUARTERS: +44 (0)582 462424,

Fax +44 (0)582 462425

© 1993 Unison-Tym labs. All rights reserved.

CIRCLE 499 ON READER CARD

Paradise Lost & Re-Found

The Information Superhighway Offers Us Another Chance

Because all sorts of folks from Al Gore to some little girl clad in black, standing in a snow-covered forest, have been wagging their tongues about the information superhighway, I feel obligated to comment on it as well.

As a reporter and editor, part of my job description is to be the eternal cynic. Therefore, I was going to attack the information superhighway with clever phrases that criticized the inevitable appearance of “toll booths” and “speed traps,” or the stagnant, hidebound “on-ramps” that are often associated with the concept of an international information network. Yet, I must admit, I too yearn to be rolling down even a semisuper country lane in an open-top telecommuting convertible.

After being stranded in Boston’s Logan airport during the latest Northeast ice storm, I realize that the past four days of my travel and meetings could have been conducted from my office — hell, from my home if I wanted to. In reality, the mental picture of the information superhighway is already further developed than many of us care to admit.

Granted, we can’t yet access a yurt in Mongolia to get the latest recipe for yak, but the information superhighway is already basically here, with its infrastructure hidden in existing phone lines and orbiting satellites. Now it’s a matter of how we choose to travel it and, more importantly, what we do with the time we save by exploiting the technology. Remember the old adage: The more you give, the more they want. Keep that in mind the next time you “sign-on” from home.

The superhighway offers us the chance to recapture what computers initially promised decades ago — an easier, less stressful workday with more time to spend enjoying life. But somehow we’ve let that escape us. For some reason we take computers on business trips and even on vacation. We gingerly cradle them on our laps, insisting they make us “more productive.” Of course, an 18-hour workday is more productive, but weren’t computers supposed to allow us to do the same, or even more, work in less time? Instead, it’s time to let the computers take us around the world from our desktop and provide us with more efficient, less time-consuming options.

However, like most technologies at one time or another, the information superhighway is at a juncture where everyone involved must come to a consensual agreement about its definition. After that, it’s up to the everyday travelers of the highway to be on guard to ensure that it doesn’t become just another hi-tech means of getting more work out of less people, or at the very worst an over-priced Sega system.

So, what exactly is the information superhighway? According to entertainment giants such as Time Warner, it simply means movies-on-demand and the ultimate home shopping network. To phone companies such as MCI, it means face-to-face, long-distance calls. And for some publishing moguls such as Canada’s Hearst Corp., the information superhighway is a vehicle for advertising.

For the true visionaries the information superhighway means a combination of all these ideas. HP seems to be on the right track with its Measurement, Computer and Communications program — MC², which brings these HP technologies together on the information superhighway.

The main argument against the information superhighway, like the warnings of the computer age, is the inherent loss of the human factor. Many “people-persons” are concerned that we will no longer be eyeball to eyeball in business transactions. However, I believe it’s worth sacrificing the personal touch in order to gain back a personal life.

So you can talk mips and bips, speeds and feeds, and profits and returns, but if we don’t allow the information superhighway to bring us closer to paradise, we’re truly lost.



By Charlie Simpson

Charlie Simpson

All Eyes On The Enterprise

I t's been said that it takes a long time to bring excellence to

maturity. So with a recent flurry of technology, product and strategic announcements in the first quarter of its 1994 fiscal year, HP is showing off its maturity as the new No. 2 U.S. computer manufacturer. Consider the following:

A RISC CHIP OFF THE OLD BLOCK

The PA-7100LC CPU. Announced in December 1993, the PA-7100LC CPU like all the CPUs in the HP PA-7100 series, maintains PA-RISC 1.1 compatibility and 48-bit virtual addressing while adding uncacheable memory pages, a little endian mode, and several new instructions for handling MPEG and JPEG compressions that operate directly on video pixels or audio samples. Little endian support provides the ability to run any operating system like Windows NT or Novell NetWare.

Designed to run at clock speeds between 0 to 75 MHz, the PA-7100LC supports external cache sizes from 8K to 2 MB. With 800,000 transistors and a 14mm x 14mm die size, the PA-7100LC is smaller than Intel's Pentium (3 million transistors on a 17mm x 17mm die).

ENTERPRISE COMPUTING INITIATIVES

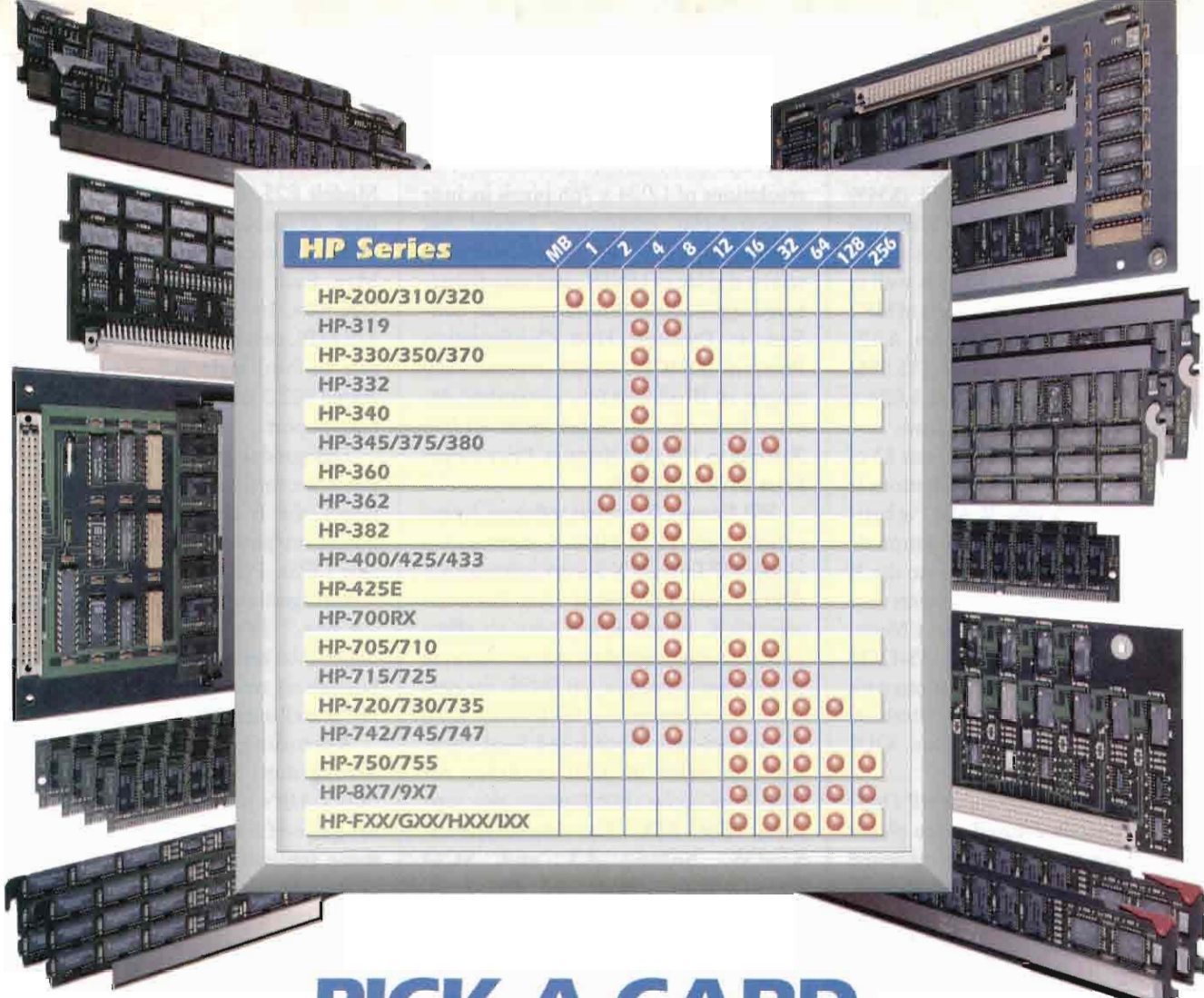
HP 9000 Model 712 Workstations. The HP 9000 Model 712/60 and 712/80i (using 60 MHz and 80 MHz versions of the new

PA-7100LC CPU, respectively) are the result of HP's first attempt to merge the characteristics and provide the benefits of personal computers and technical workstations. Introduced in mid-January, the two new systems are the product linchpins of HP's Enterprise Desktop Program, a comprehensive set of hardware, software and consulting services.

Minimum configurations for each model include 16 MB RAM (expandable to 128 MB) two EISA expansion slots, 16-bit audio, one RS-232C and one parallel port, LAN, SCSI-2, keyboard and mouse interfaces and a 260 MB hard disk (expandable to 1 GB). An entry level Model 712/60 with a 15-inch color monitor (1,024 x 768 resolution) is \$3,995; with a 17-inch color monitor (1,280 x 1,024 resolution) the cost is \$6,170. An entry level Model 712/80i with a 17-inch color monitor (1,024 x 768 resolution) is \$8,820. The Model 712 runs HP-UX 9.03. Also available is Desktop HP-UX, a reduced operating system that can fit on the 260 MB disk.

Who needs an Enterprise Desktop? End users and IT professionals, according to Janet Muto, commercial market development manager for the Enterprise Desktop Program. "We had to offer all the benefits they already recognized in their personal world on a PC and a value-add over a PC like instantaneous access to multiple data sources in the enterprise, which is not that easy for the PC but it is in UNIX." Muto also points out that the Enterprise Desktops include a power-down capability to shut down the file system and a quick boot routine.

Besides the new 712 systems, the Enterprise Desktop Program also includes



HP Series	MB	1	2	4	8	12	16	32	64	128	256
HP-200/310/320		●	●	●	●						
HP-319				●	●						
HP-330/350/370			●			●					
HP-332			●								
HP-340			●								
HP-345/375/380			●	●			●	●			
HP-360			●	●	●	●					
HP-362		●	●	●							
HP-382			●	●		●					
HP-400/425/433			●	●		●	●				
HP-425E			●	●		●	●				
HP-700RX		●	●	●	●						
HP-705/710					●		●	●			
HP-715/725			●	●		●	●	●			
HP-720/730/735						●	●	●	●	●	
HP-742/745/747			●	●		●	●	●			
HP-750/755						●	●	●	●	●	●
HP-8X7/9X7						●	●	●	●	●	●
HP-FXX/GXX/HXX/1XX						●	●	●	●	●	●

PICK A CARD.

Any card. The memory you need is in stock, tested and ready to go. Order today. Upgrade your system tomorrow.

You'll get the quality and service you expect from the leader in HP workstation enhancements. We specialize in HP, it's the platform we know best.

Newport Digital TURBO cards and memory products are guaranteed to meet or beat HP quality standards. Every card we ship has been rigorously tested in a fully functional workstation, just like yours.

Risk free. Our total quality program gives us the confidence to offer an unconditional lifetime warranty. If one of our products fails, we'll ship a replacement by overnight express. We'll do anything we can to keep your workstation working.

Call Today. Speak with an expert on Hewlett-Packard computers. We'll make sure you get the cards you need.

Evaluate any of our memory products for 30 days. If you're not completely satisfied, return it without obligation.

NEWPORT DIGITAL
1-800-383-3642

CIRCLE 246 ON READER CARD

five new X terminals and the Enterprise Desktop Productivity Software Suite — PC emulation via HP WABI (Windows Application Binary Interface) 1.1 (\$349) and Insignia Software's SoftWindows (\$549) and HP's Ready-to-Wear Desktop Builder Kit (RTW DBK), as well as MPower 2.0, an upgraded version of HP's collaborative multimedia software. A 12-inch color flat panel display (\$13,995) with 512 displayable colors and 1,024 x 768 resolution also was introduced.

HP WABI 1.1 is certified to run 13 of the most popular Window applications at 486 performance levels. WABI "is basically a reverse-engineered emulation product that also makes native calls into the X windows environment. So it delivers very high graphics performance," says Muto. Insignia's SoftWindows runs all MS-DOS and Microsoft Windows applications with support for Novell NetWare, Microsoft LAN Manager, LAN Workplace, ODI and TCP/IP.

MPower 2.0, now includes HP Digital Video, a software-based video player that plays back full-motion compressed video at 30 frames per second directly from a disk. MPower client software costs \$195; server versions cost \$1,295. Also integrated within the MPower environment is HP's TeleShare. TeleShare is an optional expansion board available for the Model 712 providing telephone, fax and data-modem capabilities on the desktop.

The RTW DBK is a set of software and documentation that simplifies the configuration, administration and use of the enterprise desktops for IT professionals. "We modified HP VUE's [user interface] to meet the configuration guidelines we thought would be necessary in a client-server world," explains Muto. For those concerned with standards, Muto says "some of the key components of RTW will probably become part of the COSE desktop; if not, then we will continue to offer them as an added-value as part of RTW built on the CDE desktop."

According to MarketVision, a newsletter published by Summitt Strategies (Boston, Mass.), HP's new breed of PC/workstation clients are well-positioned to take advantage of a transition from personal to "enterprise-ready" desktops. *Enter Entria*. HP's new small footprint X

terminals are designed for sites upgrading from 3270 terminals. The 14- to 19-inch color and monochrome X terminals with resolutions of 1,024 x 768 pixels include plug-and-play installation, Energy Star compliance, PCMCIA support and same-screen display of UNIX- and mainframe-based applications. Entria terminals conform to Dynamic Host Configuration Protocol (DHCP), which automatically assigns an IP address to a networked device. Performance ranges from 91,000 Xstones to 104,000 Xstones. Price ranges from \$995 to \$2,895.

HP Enware X station software (compatible with all of HP's X stations) includes HP Enware X Server Software 5.1 (\$695), with HP Visual User Environment/RX, which allows users to effectively manage multiple windows; Enware X Terminal Manager 1.0 (\$495) for network management, and HP Enware 3270 1.0 an optional Motif-based local client implementation of 3270 emulation for IBM host access. HP Enware also supports IBM AIX, Sun Microsystems' SunOS, Solaris 2.1 and SCO OpenDesktop software.

SERVING UP THE ENTERPRISE

HP 9000 Series 800 Model "E." HP's three new E-class servers — Model E25,



Commingleing PC and workstation technologies, HP's 9000 Model 712 systems are billed as enterprise-ready desktops.

Model E35 and Model E45 — use 40 MHz, 64 MHz and 80 MHz versions of the new PA-7100LC CPU, respectively. Models E25 (\$5,969), E35 (\$8,319), are now available, and the Model E45 (\$11,319) is expected to be available in May. Each configuration includes HP-UX 9.04, 16 MB RAM (expandable to 512 MB), two HP-PB I/O slots (expandable to four) eight RS-232 ports, integrated 802.3 and SCSI-2 interface, and a parallel port.

Designed to provide a low-cost entry point for small and medium-sized businesses, the E class servers offer remote power on/power off capability and reliable UPSs. Pre-configured systems (HP Instant Ignition) are ready to run "out of the box." The new E-class servers are targeted to retail stores and bank branch businesses, two vertical markets where HP is well-established.

According to John Brennan of Workgroup Technologies (Hampton, N.H.), HP's new servers "gives HP the last piece of the enterprise, where mainframe applications can be offloaded to a departmental server." They also provide a competitive response to Intel-based Pentium servers now being offered by Compaq, IBM and Dell.

However with competitive threats from IBM's AS/400, Sun's SPARCclassic and Pentium-based PCs, Brennan thinks "turnkey and VAR expertise is critical to establish credibility and drive the necessary volume."

WANT NOT, WORRY NOT

HP 3000 Series 9x8 Servers. Eight new HP 3000/MPE systems are also sharing the limelight with its HP 9000/HP-UX relatives. According to Glenn Osaka, general manager for HP's Commercial Systems Division, the good news is that the 7100LC CPU is leveraged across all HP product families. But customers should understand that the two product lines server fundamentally different markets.

"While the HP 9000 clearly provides solutions for large companies that are re-engineering and adopting an open systems strategy, the HP 3000 targets users who need an 'application engine,'" says Osaka. "They are ideal platforms for small-to medium-size businesses that want to evolve to a client-server environment, yet

HOW TO UNRAVEL THE CLIENT/SERVER MYSTIQUE.

First, accept that there is no mystique. Rather, there are hordes of slightly frantic software companies content to have you believe that effective open system solutions remain elusive while they rush to understand, develop, and market their interpretation of client/server. Then there's Lawson Software.

An Open Systems Foundation

At Lawson Software, we've been committed to open systems since our company was founded in 1975. We've always believed that to be a valuable business partner, an applications provider must offer choices for business strategy development. So for us, client/server isn't a new phenomenon. Instead, it's the next logical step in our development. And it exists today - fully developed and fully functional - in the latest release of our enterprise-wide, cross-industry, world-class business application software.

A True Client/Server Solution

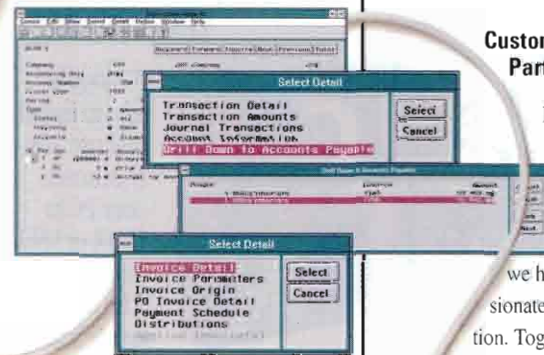
The truth is, client/server takes on a special meaning for each individual business computing environment. That's why we've structured our client/server solution as a comprehensive 3-tier architecture, delivering you maximum flexibility in hardware, database and user interface. It's why Lawson's products run across platforms like the AS/400 as well as UNIX systems such as the RS/6000 and HP9000. And it's also why we feature seamless support for a variety of leading databases. In short, we offer options that allow you to make the decisions. Based on your

existing hardware configurations and your plans for future development, you choose to place the components of client/server where they will deliver the greatest value and performance.

Optimized information Management

Lawson's efficient use of technology leads to a system with the scalability demanded in today's changing world.

We incorporate the latest GUI technologies, creating a user-friendly environment that reduces training time. Individual users can manipulate windows, icons and tool bars to create a personal work environment that increases productivity. In addition,



Lawson has revolutionized the way users access information with our comprehensive "drill-around" capability: now a single click of the mouse allows transparent access to data from multiple applications and platforms. And finally, to truly maximize your options, Lawson has maintained the ability to interface our applications using character-based terminals.

Worldwide Computing Flexibility

Lawson's single, worldwide product set - featuring all the freedom of our flexible client/server architecture - means the ultimate in simplicity for large, international



companies functioning in a variety of intra-national markets. You'll find capabilities like support for multiple languages, currencies, tax codes and rates, as well as a variety of date and reporting formats. So whether your business is managing one site or sites around the globe, you can turn to Lawson Software for one total solution.

Customer-Focused Partnership

Lawson Software has always been focused on leading edge technology. And we have always been passionate about client satisfaction. Together, these two commitments have resulted in truly flexible business solutions created with your needs in mind. We'd like the chance to demonstrate this to you. You'll see how - from our system architecture to

our award winning client services - Lawson Software really does unravel the client/server mystique.

For more information call
1-800-477-1357 ext. 835.

LAWSON
Software

Running the World's Best Companies™

All product names referenced herein are trademarks of their respective companies.

FREE FOR A LIMITED TIME ONLY

Ultimate Networking Solutions for Your PC

TCP/CONNECT II®
for WINDOWS by
INTERCON

The leader in Macintosh connectivity introduces an easier, more intuitive way to connect DOS/Windows PCs to a UNIX or VMS host. Emulates IBM and DEC terminals, allowing multiple, simultaneous Telnet sessions.

Easily transfer files between your PC and any machine that supports TCP/IP protocol. Provides electronic mail and news capability; local area network access: Ethernet, tokenring, Novell Netware 3.1, and Banyan Vines.

**XVISION 5™— SMART
PC X SERVER by
VISIONWARE®**



XVision5 is easy to install and use; easily connects your PC to UNIX or VMS platforms. Run character applications from MS

Windows and graphic applications based on the X Window standard.

XVision5's data sharing abilities handle file transfer, local printing, cut-and-paste functions. Integrated Communications system supports all common network protocols and serial connections.

JUST CALL SOFTWARE SPECTRUM: 1-800-824-3323 TO GET CONNECTED

FREE Evaluation Software by VisionWare® and InterCon® demonstrate the surest solutions to network connectivity. Even the call's free.

* VisionWare and the VisionWare logo are registered trademarks of VisionWare Ltd. XVision and XVision5 are trademarks of VisionWare Ltd. TCP/Connect II is a registered trademark, and the InterCon logo is a trademark of InterCon Systems Corporation. All other product names are trademarks or registered trademarks of their respective manufacturers or providers.

**Vision
Source**

19950 Mariner Avenue
Torrance, CA 90503
1-800-326-7427

The Intelligent Technologies Distributor

CIRCLE 270 ON READER CARD

still require high online transaction processing (OLTP) capability," he says.

Introduced at the end of January, the four two-slot 9x8LX models (918LX—\$11,750; 928LX—\$39,000; 968LX—\$62,000; 978LX—\$81,000) and four four-slot RX models (918RX—\$15,750; 928RX—\$43,000; 968RX—\$66,000; 978RX—\$85,000) also use the new PA-7100LC CPU. Basic configurations include 32 or 64 MB RAM, 1 GB disk drive, 2 GB tape drive, system console, integrated SCSI/LAN/Console interface card, a UPS and MPE/iX. Performance for the the 9x8 servers range from 53 to 153 transactions per second.

The Series 9x8 servers are easier and cheaper to expand than previous HP 3000 models. For example, the two-slot LX systems are upgradeable to the four-slot RX versions at a cost of \$4,000. Previously, upgrades cost at least \$10,000. With the included UPS, reliability is also increased. While transaction managers, print spoolers, job schedulers and system management tools are relatively hard to find the UNIX market, "the HP 3000 allows users to choose an application solution that's easy to install, manage and run," says Osaka.

HP'S EXCELLENT ADVENTURE

There can't be much doubt that HP has indeed brought and raised the level of excellence within and without its enterprise. And as an open systems provider, it clearly wants to do the same for its customers. Workgroup Technologies' Brennan agrees: "HP has been very successful moving to open systems; there's no reason to believe that they won't continue to be. But as DEC and IBM well know, excellence doesn't necessarily guarantee success in the computer industry.

"We know how hard we need to work to keep our edge," says Carol Mills, general manager for HP's General Systems Division. Mills also points out that HP is not a sales-driven company. We are driven to make contributions through technology." For now, HP is enjoying the benefits of working smarter, not harder. Says Mills, "We're not experts in the glass house, we are mastering the details of being distributed computing experts." ■

ISO 9002



Now you can add workstations to your Domain/OS or HP-UX environment at only a fraction of the list price.

That's what remanufacturing is all about. Recent model, lower cost equipment that runs like new because it has been rebuilt. From the ground up. To manufacturer's specifications.

Literally manufactured a second time. By Tryonics,

Why
pay
more
?

the people who know how to optimize these systems for your installation—new or existing.

Tryonics delivers the highest quality remanufactured workstations on the market today. Backed with technical expertise, full 90-day warranty and eligible for manufacturer's maintenance contract.

Before you pay more, call **1-800-551-6236**

 ***tryonics inc.***

Workstation Computers and Services

CIRCLE 477 ON READER CARD

Fax (603) 427-6843 Email: info@tryonics.com 170 West Road Suite #15 Portsmouth, NH 03801

Footless Or Firmly Planted

I disagree with much of what was said in [Gordon McLachlan's column in the December 1993 issue] about diskless PCs.

I have found that loading and running Windows over the network to be as fast, and sometimes faster than loading off a reasonably fast and SMARTDRV cached local drive. Supporting diskless PCs is easy: If a unit goes down, just swap the box.

Another important benefit is that diskless units do not need to be backed up. This is a time-consuming chore with local hard drives. You do not have to worry about maintaining a path statement in two different places and you don't need to run a disk cache or data monitoring program. It is all done on the server and done better than on standalone units.

I think there is a place for local drives on networked PCs. Advanced users use many more software applications and these are more easily administered off a local drive. However, many computer users, more than half, are not computer enthusiasts, hobbyists or magazine editors, they do not need expansion capabilities and they do not install software. Instead they have their units on all day, using them for word processing, analysis and perhaps accounting, instead of fiddling.

I hope you reconsider your position and perhaps talk to network users and administrators of diskless PCs. Diskless PCs are not about control freaks, they are a very desirable way of providing computer utility to a large percentage of computer users.

Mark S. Kurtz
Equipment Manager
Sy Art Parking Structures Inc.

In reference to Gordon McLachlan's [column in the December 1993 issue] regarding diskless PCs and the comparison of the HP Windows Client to diskless PCs, there are several points that I would like to make.

First, the HP Windows Client [offers] significant benefits versus traditional diskless PCs. These include: an integrated high performance LAN interface; no fan; no local floppy drive; extensive ROM-based diagnostics; Microsoft DOS/Windows and mouse; networking stack for TCP/IP and NS/VT (WRQ RNS/3000 connection); HP block mode and DEC VT emulators (WRQ R1Win and R2Win); and Windows-based installation utility with pre-configured boot images.

The HP Windows Client is designed for companies

who want to move transaction-oriented applications toward client-server computing using a PC front-end. The HP Windows Client provides a better solution than a disked PC in these environments because it offers a significantly lower-cost 486-based desktop solution while retaining the manageability, control and security of terminals.

The HP Windows Client and a disked PC will perform comparably in a transaction-oriented environment because users are most frequently accessing applications or databases located on a host computer or server. Due to recent advances in network operating systems, LAN interfaces and server-based disks, it is now also possible to get very good performance running Windows-based PC productivity applications, such as E-mail, word processing and spreadsheets. The HP Windows Client runs these applications locally and accesses the file server only when applications are downloaded and files are retrieved or stored.

Administrative and support costs (estimated by the Gartner Group at \$2,000 per year for disked PCs) are lower with the HP Windows Client. A server-centric approach leads to easier software installation, upgrades, version control and license administration. Data integrity is enhanced because backups are easier and more reliable. The risk of virus introduction and unauthorized data removal is reduced because users don't have floppy drives. Network-wide disk space can be reduced by installing only one copy of PC software in a shared directory for use by many users.

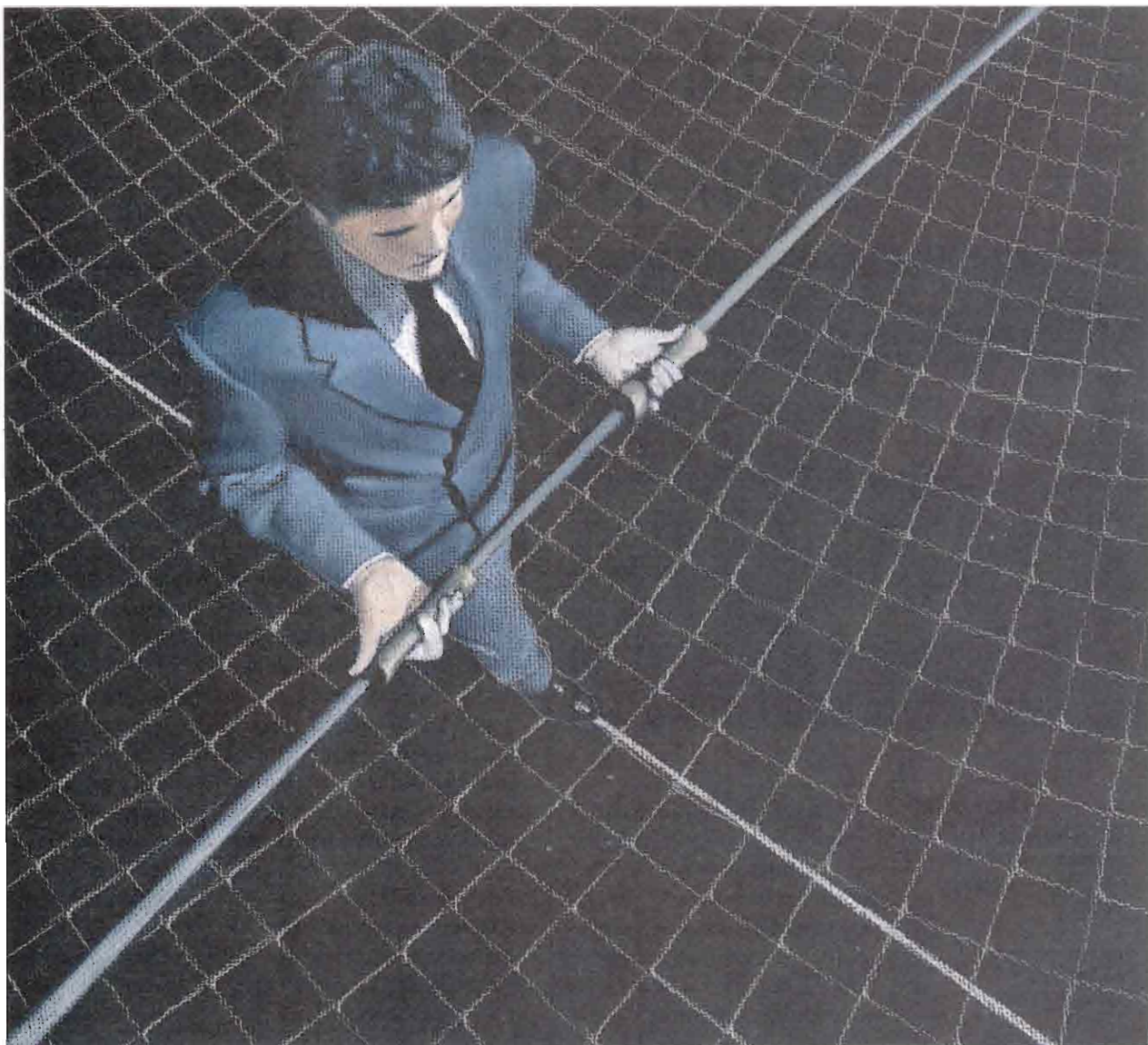
The low cost of the HP Windows Client (\$895 without monitor) and the benefits of a server-centric environment make it the right balance between user, system administration and organizational needs for many application environments.

Gregory A. Huber
Windows Client Marketing Manager
Hewlett-Packard Co.

HP Professional welcomes comments from its readers. Letters may be edited for brevity and clarity and should be addressed to: HP Professional, 101 Witmer Rd., Horsham, PA 19044. Fax number: (215) 957-1050. Internet address for staff listed on the masthead: LASTNAME @ CARDINAL.COM

Please include a phone number for verification.

Because your business is in the balance.



Call it disaster or call it disruption. The result is the same. In a computer-dependent world, every off-line minute means an interruption in the flow of vital information. And business.

Who's to protect you? The obvious choice is SunGard, the leader in

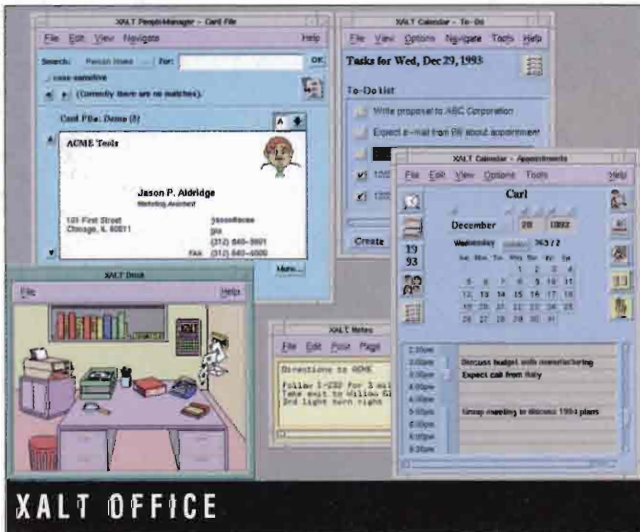
disaster recovery services. The one company dedicated solely to disaster recovery. And the one with the broadest range of computer platforms in the industry. SunGard recovers all major platforms. SunGard has the capacity to recover the largest companies and the flexibility to tailor programs for the

smallest work groups. SunGard. The company with a history of performance excellence and an incomparable standard of service. Because your business is in the balance.

For more information, call 1-800-247-7832.

CIRCLE 165 ON READER CARD

XALT Office Minds Your Business



ments a day-at-a-time," Luteran says. "It is more like a Day-Timers view." Schedules can be viewed on a daily, weekly or annual basis. It is also possible to maintain another person's calendar.

Users can keep a detailed To-Do list which carries over a list of incomplete tasks. While this list does not automatically link to the calendar, you can cut-and-paste specific items to appear as pop-up reminders or mail messages when the appointment time arrives. Digitized sound can also be added to reminders.

XALT Mail provides a complete mail service working with the open, standard mail delivery protocols found in UNIX workstations and systems. Mail is easy to send and receive and looks like a postcard.

However, Luteran says, "A missing feature that I found on the mail tool was a filter for incoming mail." But, according to Carl Koppel, vice president of Grafpoint, users can now filter mail by various user-defined criteria. For example, users can request that the most recent mail gets placed at the top of the pile. Koppel says future releases will include the ability to filter and give priority to mail coming from a specific source. "The problem with filtering mail based on its source comes when you forget that the filter is there," Koppel says, "all of a sudden you start to wonder why you aren't getting messages from a specific person."

XALT People Manager is a module that uses a business card metaphor to provide complete information management for people and groups you work with. People Manager information can be accessed by the other XALT applications. For example, you can drag-and-drop a person's image from the People Manager into any time period in the calendar and a meeting is automatically set up, or you can address mail by doing the same.

XALT Notes provides more than just a message space. Notes can be stored for later use, and can be sent to one or several co-workers. Notes can be used to edit external ASCII text files. It provides instant communications, independent of the E-mail system.

Finally, XALT Desk interface provides an "office" with familiar objects representing the different parts of the product suite. A filing system allows you to organize and store your information. Blank books on the bookshelf can be customized to launch any third-party application. Information can be stored in customized folders within drawers. XALT items can be deleted by dropping them in the trash can, or printed by dropping them in the printer.

XALT Office runs on HP 9000 Series 700/800, Sun SPARC, Data General Aviiion or IBM RS/6000 platforms.

— Deborah Schwartz,
Assistant Editor

- Includes desktop, calendar, notes, E-mail and people management modules

- Information can be shared among different modules

- Can be installed on HP 9000 Series 700/800, Sun SPARC, Data General Aviiion or IBM RS/6000 platforms

Grafpoint Inc.

1485 Saratoga Ave.
San Jose, CA 95129
tel: (408) 446-1919
fax: (408) 446-0666

Circle 355 on Reader Card

Post-It notes and miscellaneous pieces of paper are littering your desk. "Call Bob about Denver deal," "Meeting with ABC Inc. — Tuesday @ 10," "Finish year-end report ASAP." Wouldn't it be easier to have all this information organized and in one location? XALT Office from Grafpoint (San Jose, Calif.) can help by allowing users to create a "virtual office" with five integrated applications: desktop, calendar, notes, electronic mail and people management.

Tom Luteran, software development engineer with HP's Medical Products Group (Andover, Mass.), was looking for a fully integrated desktop product, so he installed a copy of XALT Office on their HP 9000/710 to see how it measured up.

"It can present your appoint-



This Chair Can Help You Make Difficult Decisions

And you are invited to use it for free! Quest Software and Hewlett Packard are giving a series of free seminars that will provide answers to some of the most critical issues facing IS professionals today.

'Leveraging your HP 3000 Investment' is a half day session, designed for IS managers who are interested in maximizing the use of existing equipment while taking advantage of today's newest technologies.



Find out about how you can use Shareplex and NetBase to:

- Maximize IS availability
- Balance your workload
- Provide disaster recovery
- Implement fault tolerance
- Integrate UNIX, LANs and MPE environments.

We'll also tell you about output management, enterprise-wide printing and electronic report management.

CIRCLE 268 ON READER CARD

So, pull up a chair and let us take some weight off your shoulders as well as your feet.

For dates and locations see the attached card and mail it in to reserve a seat. Call Quest Software for more information 714-720-1434.

**QUEST
SOFTWARE**



See Us at Executive Interex,
Booths #424 & 426

TurboIMAGE Shifts Into OVERDRIVE

- CIU enhancement modifies TurboIMAGE detail dataset search or sort values

- Runs on MPE/iX 4.0 or later

- Price is \$800 to \$7,000 depending on CPU

Lund Performance Solutions

3111 Santiam Hwy.
Ste. 1
Albany, OR 97321
tel: (503) 926-3800
fax: (503) 926-7723

Circle 353 on Reader Card

Riviera Software (Austin, Texas) recently introduced OVERDRIVE-3000 for legacy TurboIMAGE applications. With OVERDRIVE3000, existing software can make use of the Critical Item Update (CIU) enhancement without re-programming.

The contents of a TurboIMAGE database can be altered by any of three intrinsic: DBPUT to add a record; DBDELETE to delete a record; and DBUPDATE to modify a record. In the case of DBPUT and DBDELETE, TurboIMAGE updates paths and sort chains as necessary. The original implementation of IMAGE did not, however, allow DBUPDATE to modify search or sort field values. These values could be changed only by deleting the record and then adding it back with the new search/sort values. This is a resource wasting process that gets worse as the number of unchanged critical fields increases.

With the CIU enhancement, the DBUPDATE intrinsic now can be used to modify TurboIMAGE detail dataset search or sort values. CIU also clearly reduces the number of logical and physical disk I/Os.

Delaying CIU's implementation was HP's indecision over

the future of IMAGE, and the debate over the need for, and advisability of, CIU.

Michel Kohon, co-founder of Riviera and the author of OVERDRIVE3000, points out that while the debates raged over CIU, millions of lines of code were written and tens of thousands of applications implemented using DBDELETE/DBPUT to modify critical field values. In order to take advantage of CIU, all that code has to be reviewed, modified, recompiled and tested. Or does it? Kohon decided there was a better way.

Existing software makes use of the Critical Item Update enhancement.

OVERDRIVE3000 works by detecting any attempts by a program to modify critical item values with a DBDELETE-DBPUT pair, replacing it with the more economical CIU DBUPDATE. The program logic is not altered.

OVERDRIVE3000 traps TurboIMAGE calls, looking for a DBGET-DBDELETE-DBPUT sequence. If, after a DBGET for a dataset, it finds a DBDELETE for the same dataset, the DBDELETE is deferred until the next event for that dataset. If the next event is a DBPUT, OVER-

DRIVE3000 checks if the used list consists of all the items in the dataset. If it does, it performs a CIU DB-UPDATE instead of the DBPUT. If the list is a partial list, the original DBDELETE and DBPUT are executed.

Kohon realized many people would be nervous about a product that affected the way their TurboIMAGE databases would be updated. Therefore, he created REPORT mode for testing, validation and monitoring. In REPORT mode, OVERDRIVE3000 does not actually replace any DBDELETE-DBPUT pairs, but measures and reports how much CPU time is used per transaction. Then, it calculates the expected minimum and maximum CPU savings.

Riviera Software and Lund Performance Solutions (Albany, Ore.) announced that Lund had acquired all rights to OVERDRIVE3000 and will be supporting and marketing the product.

OVERDRIVE3000 runs on MPE/iX release 4.0 and later. Price will range from \$800 to \$7,000 depending upon CPU model.

*John P. Burke,
HP 3000 Editor*

Why not the best?



HP 1000,
HP 3000 &
HP 9000

8 & 25 Gigabyte
Streaming Tape Drives

96 Gigabyte
DDS Autochanger

Unattended backup of
all data onto compact
cartridges

Media Translation &
SS update service
available

Also Available:

HP 1000 Memory

Improves system performance. Free evaluation.
2 to 32 MB for A990, A900, A700, A400,
A600+, & A600. Ten year warranty.
Field Expandable



HP 1000 & HP 9000 SCSI Disk Drives

Capacities to 2 GB with full five year warranty.

HP 1000 & HP 9000 Optical Discs

1 Gigabyte Rewritable & Multi-function. Ideal for
information retrieval and archival data storage

Superclock/1000 Automatic time & date

*"I promise you —
no service hassles, no
matter who is servicing
your HP system."*

Rick Walsh
President

HERSTAL

Automation Ltd.

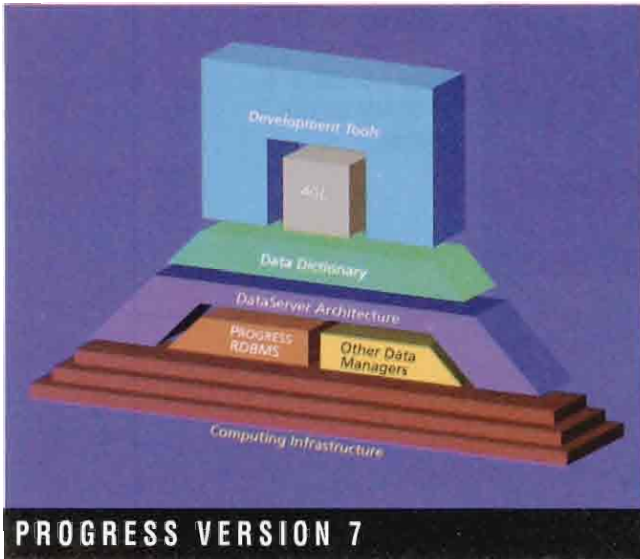
3171 W. Twelve Mile Road
Berkley, MI U.S.A. 48072-1339

E-Mail SALES@HERSTAL.COM

FAX 1-313-548-2010

Phone 1-313-548-2001

Progress 7 Steps In The Client-Server Direction



- Supports HP Allbase
- Supports Motif, X Windows, Microsoft Windows and character-based interfaces
- Unbundled pricing

Progress Software Corp.

14 Oak Park
Bedford, MA 01730
tel: (617) 280-4000
fax: (617) 280-4095

Circle 352 on Reader Card

The technological imperative “smaller, faster, cheaper” reigns supreme. Except when it comes to implementing relational databases; then it’s more like larger, slower, exceptionally expensive. However, some products like Progress Version 7 from Progress Software (Bedford, Mass.) challenge that trend.

Rather than promote a particular database technology, Progress’ goal was to focus on “what’s appropriate for mission-critical applications in a client-server environment,” says Bill Phelan, product manager for Progress Version 7. “Unlike Oracle and Sybase, we chose not to concentrate on just one particular database technology.”

Available since September 1993, Progress Version 7 con-

sists of three architectural components: the Progress RDBMS, the Progress DataServer Architecture and the Progress Applications Development Environment (ADE). The Progress RDBMS is a multithreaded, ANSI SQL-compliant database that includes record-level locking, distributed database management with two-phase commit and query optimization features. According to Phelan, “because as much information as possible is contained in a single network packet, less information has to be passed from client to server.” Consequently, network traffic is minimized.

Applications built with the Progress ADE can access the Progress RDBMS as well as a variety of other relational databases, file systems and industry standard interfaces through the Progress DataServer Architecture.

Supported databases include HP’s Allbase, DEC’s Rdb/VMS, IBM’s AS/400, Object Design Inc.’s ObjectStore, Oracle and Sybase. File systems supported include Digital’s RMS, and IBM’s C-ISAM and CT-ISAM.

DataServer interfaces supported include Microsoft’s Dynamic Data Exchange (DDE) and Embedded SQL for C. Support for Microsoft’s Open DataBase Connectivity (ODBC) interface, says Phelan, will be available in the second quarter of 1994.

The Progress Data Dictionary (part of the DataServer Architec-

ture) serves as a central repository for all database schema, definitions, data validation rules and application defaults, insulating application developers from the specific details of each database type and location. Data types supported include character, integer, decimal, logical and date as well as arrays of field type. Audio and video data types are not supported.

The Progress ADE includes the Progress 4GL using an event-driven programming model. Added to Version 7 is the User Interface Builder (UIB) used to create graphical- and character-based applications, an application debugger, application help development, report builder and translation manager. Application interfaces include DLL, HLC and UNIX Pipes.

Progress Version 7 is available on platforms from Bull, Data General, DEC, HP, IBM, ICL, Microsoft Windows 3.1 and NT, NCR, Novell, SCO, Silicion Graphics, Sun, Unisys and Univel.

Progress offers unbundled product pricing, which Phelan says, “allows users to configure their host-based and client-server applications in a more straightforward manner.”

For the HP 9000 Series 700, a single user developer’s version costs \$8,900; for 16 users, \$23,000; for an unlimited number of users the cost is \$29,000.

George A. Thompson,
Technical Editor

Norand User Group Conference is April 24-27.
For more details, call 1-800-553-5971.



DON'T LET A WIRE LIMIT YOUR HP SYSTEM'S REACH.



Your HP system's control only stretches as far as the nodes connected to your LAN. What about those areas in your manufacturing and distribution centers that are beyond its cabled reach?

Imagine if your computer could remotely update your MRP system. Imagine the efficiency of wireless communication in pick and put-away operations.

Norand® RF turns your LAN-locked HP system into a "LAN Rover" — free to go wherever computer power is needed.

Our portable hand-held wireless radio terminals provide real-time access to your host. You get on-line control — any place, any time, for any task.

Easy to implement.

Implementing Norand RF is easier than adding a remote terminal. It works with your existing platform without programming or connectivity problems. You simply "plug and play" — without disruption.

Thousands of Norand customers have taken computer efficiency where it couldn't go before with

Norand RF. Join them and get the confidence only a leading company can provide.

Contact us to receive your FREE "Connect with Confidence" RF Handbook. And put more productivity and control within your grasp. Call **1-800-452-2757**. In Canada call **1-800-633-6157** or **416-477-1818**.



GO WIRELESS WITH NORAND® RF AND PERFORM WHERE YOU COULDN'T BEFORE.



CIRCLE 187 ON READER CARD

®Registered Trademark: Marca Registrada by Norand Corporation, Cedar Rapids, Iowa, U.S.A. ©1994 Norand Corporation. All rights reserved.

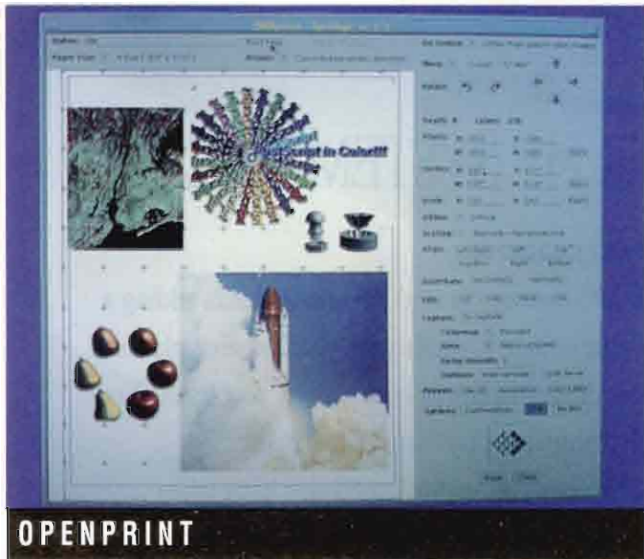
NORAND®

Connect With Confidence

Norand Corporation
550 Second Street S.E.
Cedar Rapids, Iowa 52401
Phone: 319-369-3100

HPP 3/94

Going Where No PostScript Went Before



SPARCstation 2 and SPARCstation 10 workstations. OPENprint allows non-PostScript printers to print PostScript documents as output raster images directly, without unnecessary conversion. And, coarse, half-toned images that are produced using previous filters and programs are eliminated.

"Since we have started to use OPENprint, the front-end has been improved, and some use it for presentations," Berlanga says, "but, more important for us, was the ability to print our generated PostScript files to both PostScript and HP PaintJet printers." OPENprint provides a host-based model of printing that allows users to buy or keep lower cost printer hardware, and protect the investment as workstations get faster and technology such as PostScript evolves to new levels.

The software also supports several output devices including printers from HP, CalComp, Kodak, Shinko, Tektronix, Mitsubishi and Seiko, as well as most PostScript-compatible machines. Users can apply standard "lp" or "lpr" print commands to generic print raster images (GIF, SRF, PPM, XWD), HPGL, text and PostScript documents from any UNIX-based system to almost any printer. It supports a minimum of 35 Adobe fonts.

Raster images can be auto-sensed and diffused-dithered, which avoids the PostScript pro-

cess altogether. The dithered image can then be automatically printed directly to a non-PostScript printer or converted into PostScript code.

With OPENprint's on-screen WYSIWYG editor, a user can compose a page consisting of one or more images. Utilities are provided for color correction, control of brightness, sharpness, dithering, scaling, image, rotation, placement and text insertion. The images or entire screen can then be saved in a printer with their pre-selected defaults.

OPENprint includes a suite of X Window-based imaging tools. Any user on the network can load, import, preview and manipulate various image formats and toggle the printer's built-in options through either an OpenWindows or X.11/Motif interface.

It also offers a standard printing architecture and user interface across all major UNIX platforms including support for HP 9000/700, Sun SPARC and IBM RS/6000 platforms as well as Silicon Graphics and DEC workstations.

HP and IBM versions cost \$700. OPENprint for Laser Printers (for HP and IBM) costs \$345.

— Deborah Schwartz,
Assistant Editor

- Supports a minimum of 35 Adobe fonts
- Supports HP 9000/700, Sun SPARC and IBM RS/6000 platforms
- \$700 for HP and IBM versions, \$345 for laser printer versions

ColorSoft Inc.

7733 Herschel Ave.
Ste. E
La Jolla, CA 92037
tel: (619) 459-8500
fax: (619) 459-8274

Circle 354 on Reader Card

When the Research, Development, Test and Evaluation (RDTE) Division (San Diego, Calif.) of the Naval Command Control and Oceanic Surveillance Center (NCCOSC), needed to find a product that would allow them to print PostScript files to non-PostScript printers, they found that OPENprint from Colorsoft Inc. (La Jolla, Calif.) allowed them to do just that.

According to Greg Berlanga, system engineer in the RDTE Division, which develops surveillance and communications systems for the U.S. Navy, OPENprint is embedded into an application that prints statistical graphs and charts from their Sun



Reflection X. Taking X to its highest power.

In the challenging world of X, power is more than just speed. It's the power of product—and the people behind it. The reliability you need to run mission-critical applications. The power to transform your working world.

Reflection® X is a fast, dependable X11R5-compliant PC X server for Microsoft Windows. You'll get 32-bit processing with single- and multiple-window modes, and a superb implementation of FTP, developed especially for Windows.

The Reflection X Connectivity Suite takes the X Window System to a new level of performance. With award-winning VT320 emulation and reliable network transports, *it delivers complete PC-to-UNIX connectivity.* And it's backed by a group of professionals with over a decade of experience producing standard-setting PC software. Plus a top-notch support team that puts the customer first.

That's why Reflection X is the PC X server you can count on, day after day. With help as near as your phone—though you'll probably never need to call. For unparalleled connectivity with speed, dependability, and support, choose Reflection X. And take X to its highest power.

For more information

Call today for special pricing on trade-ins!

800-92NETWORK

In Europe, call +31.70.375.11.00

Outside Europe, call 206.217.7100

CIRCLE 262 ON READER CARD

 **Reflection**
Making PC Connections Count

Walker Richer & Quinn, Inc.
150N Dexter Avenue North, Seattle, Washington 98109 / FAX: 206.217.8295
Buitenhof 47, 2513 AH Den Haag, The Netherlands / FAX: +31.70.356.12.44
Reflection is a registered trademark of Walker Richer & Quinn, Inc.
All other trademarks are the property of their respective holders.

Easing The Burden

Workstation Solutions Clears The Way For System Administrators



"We're trying to eliminate the need for administrators to have anything to do with backup or restoration."

James R. Ward
President
Workstation Solutions Inc.

Workstation Solutions Inc.

One Overlook Dr.
Amherst, NH 03031-2800
tel: (603) 880-0080
fax: (603) 880-0696
CIRCLE 357 ON READER CARD

A problem that has increased with the number of networked UNIX workstations is the difficulty of backing-up and restoring files when dealing with what can be huge amounts of data. For the sake of security, data files must be backed up, removed to inexpensive off-line media, then restored online to be revised according to end-user specifications.

When a system administrator's responsibility includes quantities of data that can reach to the tens or even hundreds of gigabytes, backup and restoration can be a time-consuming task. Quick Restore (QR), high performance backup and restore software for UNIX workstation networks from Workstation Solutions Inc. (Amherst, N.H.), can help ease the system administrator's burden.

"QR is a backup and restoration system that runs on seven or eight platforms, from Silicon Graphics and DEC Ultrix to the more mainstream platforms, like Sun, HP and AIX. The software is an integrated system using a client-server model, that runs on any of these machines and does backups to a centrally located server, usually a tape device," says James Ward, founder and president of Workstation Solutions.

Ward, a former Apollo Computer engineer, helped design Apollo's Domain operating system as well as backup and restore

solutions for Apollo. The company is applying concepts developed for homogeneous Apollo networks, to networks of heterogeneous workstations, according to Ward.

Based on the IEEE "tar" archiving standard, QR lets users read backup data on any UNIX host. Any tar-compatible program or product running on a UNIX platform can read any tape that QR writes. QR keeps an online catalog of each file's tape block location. It also positions the tape on the exact location of the file to be restored, speeding the restoration process.

Known as direct-to-block positioning, Ward says this technique allows QR to find and restore a file anywhere on a 5 GB tape in less than three minutes. This is faster than conventional restore methods, which read files sequentially and can take more than an hour to find and restore a file.

This is welcome news for administrators, including Gregory Shea, network specialist for LTX Corp. (Westwood, Mass.), a designer and manufacturer of testing equipment for the semiconductor industry. "We design the testing equipment hardware and write the software to control it. That software can get to be very large. We are currently developing a software engineering network that will eventually have 50 GB of online storage," Shea says. Currently, the installed hardware

base at LTX consists of HP/Apollo's running DomainOS, Sun running SunOS 4 and 5, DEC Ultrix and HP running HP-UX.

Shea chose Workstation Solutions' QR for two reasons: "Because of the amount of data I have to backup — I have two stacking units that will hold 50 GB each — and the diverse, multiplatform network we have." Shea adds, "I don't have to hunt through all the tapes to find a person's backup. From my standpoint, it's great. From the users' standpoint, it tells them that their stuff is being backed up, which is reassuring for them."

According to Ward, Workstation Solution's goal is to provide a level of automation that will make life easier for system administrators — not something that UNIX has traditionally been famous for. "We're trying to eliminate the need for administrators to have anything to do with backup or restoration."

According to Ward, "Typically it's now about one administrator to 15 or 20 workstations. When we built system administration tools at Apollo, we had one administrator to 100 workstations. With modern technology on UNIX systems, there's no reason why we can't do even better than that."

—Sam Dickey,
Contributing Editor

Now You Don't Have To Choose Between Windows And UNIX.

When it comes to choosing between Microsoft® Windows™ and UNIX solutions, don't think heads or tails — think SoftWindows™

SoftWindows enables you to run Windows-based applications on UNIX workstations at 486 performance. That gives you the power and functionality of UNIX and the flexibility and productivity of Windows and MS-DOS-based applications.

SoftWindows comes with Windows 3.1 and MS-DOS® pre-installed. That means you can run virtually any Windows or MS-DOS-based application, including those that require access to printers, modems or file servers. SoftWindows supports PC CD-ROMs, OLE and

DDE between Windows-based applications and copying and pasting to and from host applications. You're not limited to a few individually designed applications and you're always current with the latest versions.

Plus, you get full networking support — including NetWare®. You can even run your PC mail system from your UNIX workstation.

See both sides of the coin — no matter how it lands you win. Call Insignia Solutions today: 508-682-7600.

Insignia Solutions®

©1993 Insignia Solutions Inc. Insignia and Insignia Solutions are trademarks of Insignia Solutions Inc. Microsoft and MS-DOS are registered trademarks and Windows and the Windows logo are trademarks of Microsoft Corporation. SoftWindows is a trademark used under license. All other product names are trademarks of their respective companies.



Either Way You Win.

CIRCLE 458 ON READER CARD

Counting On A Future With UNIX

Multiview Begins To Port Its Financial Applications To HP-UX



"We see people sticking their toes in the UNIX water by migrating a small business entity, like a division, to see how it works out."

John Leslie
President
Multiview Corp.

Multiview Corp.

One Van De Graaff Dr.
Burlington, MA 01803-5171
tel: (617) 229-2225
fax: (617) 229-1635

CIRCLE 351 ON READER CARD

Multiview Corp. (Burlington, Mass.), a supplier of financial applications for HP platforms, is a company with a philosophy that financial managers can relate to: Keep an eye on the long term, go with a winner and avoid unreasonable risk.

Formed in 1990, following the leveraged buyout of a suite of financial applications originally developed by Cognos Corp. (Burlington, Mass.) for the HP MPE platform, Multiview is now a leader in the HP MPE software market with 1,600 applications installed, and over 400 international clients across a range of industries.

Multiview was designated an HP Channel Partner ISV in 1990, and in September of last year, an HP value added reseller of HP hardware with Multiview applications. According to John Leslie, president of Multiview, the relationship has been good. "HP gives their clients, our clients and prospective clients — be they on DEC or Wang or Data General or another platform — the ability to buy a mainframe level machine for not much money. With that technology, and a third-party program that is one of the best in the industry, they're a good business partner."

Although Multiview products have always been available for MPE, and for two years, for MPE/iX, Multiview has been cautious about porting to UNIX. Its first HP-UX products — General Ledger, Accounts Payable and Purchase Order packages — will be available after the first half of 1994 followed by client-server versions before the end of the year.

According to Leslie, Multiview did not rush to get on board the UNIX bandwagon. UNIX has become such a powerful buzzword in the industry, he says, many people, HP users among them, will consider migrating to UNIX for that reason alone. Still, Leslie doesn't expect a stampede. "We see people sticking their toes in the UNIX water by migrating a small business entity, like a division, to see how it works out."

One HP/Multiview user who shares Leslie's caution is Ken Bender, director of accounting for Meadox Medicals (Oakland, N.J.), a medical devices manufacturer. Currently running Multiview for MPE on an HP 3000 Model 947, Bender says, "When it comes to UNIX, all I can do is repeat what I've read. But I do know that non-systems people tend to think that UNIX means open systems. In other words: 'I can buy any hardware or software I want.' And I know that's not necessarily true."

Bender adds, "For our cur-

rent leasing period, we're sticking with MPE. After that, I'm sure we would entertain the idea. You will investigate anything new. That's just a natural instinct. But if you look at the available applications and find that there aren't sufficient choices to meet your needs, you may wind up going back to MPE."

For now, Bender's financial application needs are met. Coming from a background in IBM mainframes, Bender says, "Dollar for dollar, Multiview is the best value in financial software that I have come across in my 17 years of professional experience."

Once its products are available for HP-UX, would Multiview consider porting to other UNIX versions? Not likely, says Leslie. As in the past, Multiview has chosen to stay with HP. "You see a lot of software companies make the mistake of taking support dollars out of their customer base and using them to port to other platforms. We have opted not to do that."

—Sam Dickey,
Contributing Editor

MPFE & UNIX

VISIMAGE, The Technology Leader in Report Writing... ...BAR NONE



**VISIMAGE, the Technology Leader
in Report Writing for BOTH end
users and MIS Professionals**

Client
MS/DOS
Windows



Server
UNIX
MPE

In addition to a report writer that is both powerful and easy to use, VISIMAGE users benefit from the most responsive and professional technical support in the industry.

**Call us today for a FREE
self guided PC demo diskette!**

VISIMAGE, the OPEN SYSTEMS report writer, can access flat files, indexed files, IMAGE, ORACLE and other relational databases through a single, consistent CLIENT interface. VISIMAGE users can create their own lists and reports or download data to many popular PC file formats.

CIRCLE 143 ON READER CARD

All products are trademarks of their respective companies.

VITAL
Soft
INCORPORATED

Outside California Only, Call

1-800-VITALSOFT

1153 Bordeaux Drive, Suite 101
Sunnyvale, CA 94089-1210 (408) 745-7680

Single-Minded Focus

Bradmark Technologies Inc. Sticks With Database-Oriented Philosophy



"As a database utilities company, we can't say, 'we are going to move to UNIX.' We have had to select the databases that are the most popular under UNIX."

C. Bradley Tashenberg
President and CEO
Bradmark Technologies

Bradmark Technologies Inc.

4265 San Felipe
Ste. 800
Houston, TX 77027
tel: (800) 275-2723
fax: (713) 621-1639
CIRCLE 356 ON READER CARD

One company. One mission. That's the corporate philosophy behind Bradmark Technologies Inc. (Houston, Texas), according to C. Bradley Tashenberg, the company's president and CEO. Tashenberg who also classifies himself as a "senior programmer" founded Bradmark in 1981, after deciding to provide the "most comprehensive database utility [for HP's IMAGE] that was out there.

"Most people were developing applications for IMAGE," says Tashenberg, "so I decided to stick with something that was database oriented." Ten thousand customers and 25 countries later, most HP 3000 users are now quite familiar with DBGeneral, one of Bradmark's products.

However, like many new products, adding features to DBGeneral became more "chronological than organized."

Now, DBGeneral is divided into nine functional areas with over 40 functions neatly and systematically organized. In 1984, as the industry turned to management-oriented solutions, Tashenberg took an analytical approach. "It was better to develop products that could watch or do the work for you. There was no reason, why people had to police the system, when it can do it itself." He points out, however,

that "other products only gave resolutions. You had to experience the problem before you could solve it."

In June 1990, Bradmark bought DBAudit from Robelle Consulting Ltd. (Langley, British Columbia). DBAudit provides insights into a database transaction log file. Tashenberg says, "DBAudit can tell you everything that happened and when. Is it really the system that screwed up, or some other violation? You can tell if someone changed a field in the database." DBAudit also provides a means of monitoring database activity.

In the future, Tashenberg expects to "expand our product suite with more solutions but keep our orientation in the database world." For example, in September 1993, Bradmark introduced DBGeneral performance activity monitor option for Oracle (available this month); earlier in April, a version was released for Sybase. "DBGeneral will be able to function over multiple database environments," says Tashenberg. Support for Informix is currently in the works and eventually for Ingres.

"We felt that in order to stay with HP, we had to change direction along with them," says Tashenberg. That, of course, means open systems. "As a database utilities company, we can't say, 'we are going to move to UNIX.' We have had to select the databases that are the most

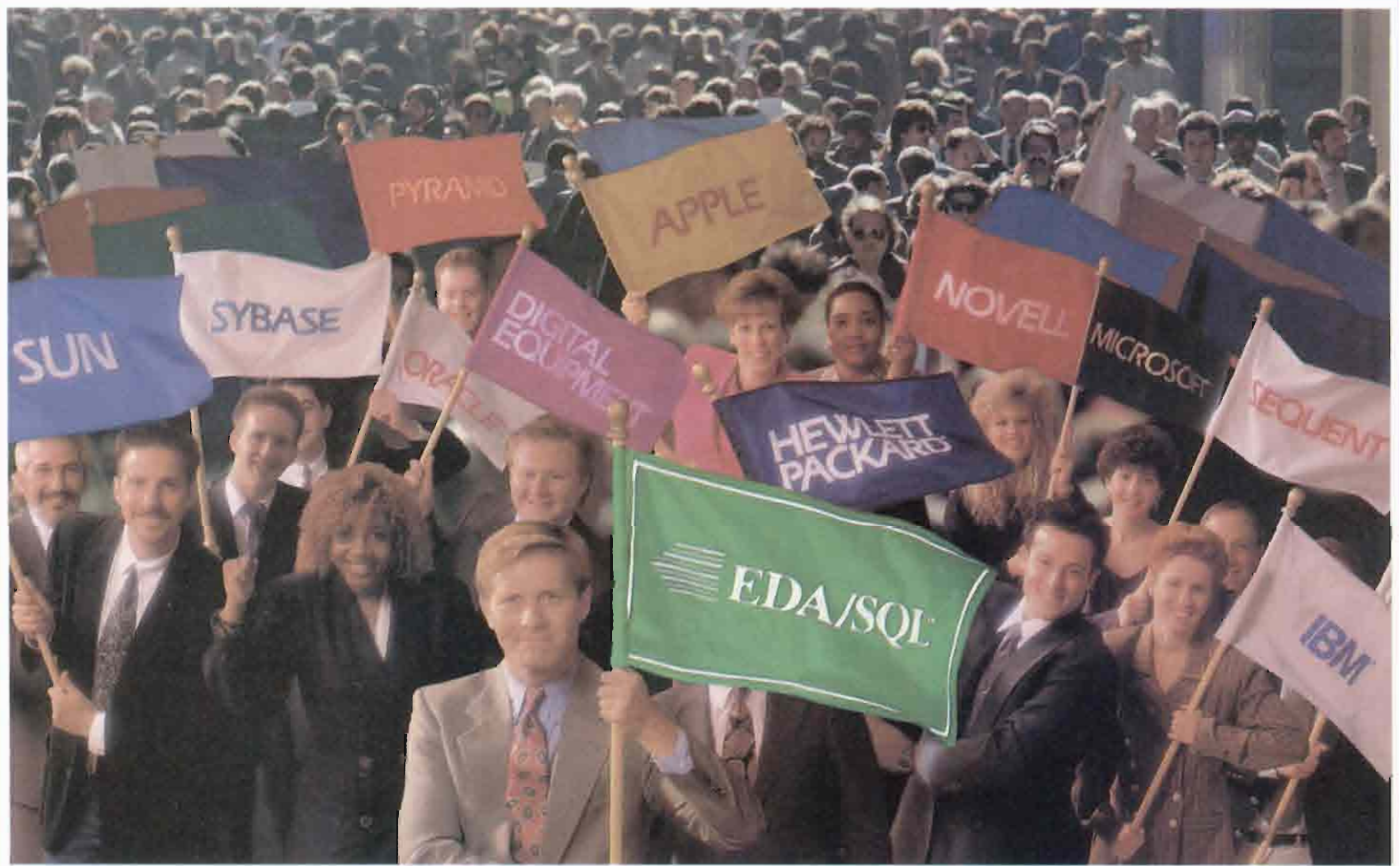
popular under UNIX." Tashenberg also expects to broaden the company's horizons "by offering a multiplicity of solutions." For example, Core Superdex, the primary engine of Bradmark's database indexing technology is being shipped with copies of IMAGE/SQL through HP's Quick Start IMAGE/SQL Kit.

Core Superdex allows users to build indexes on master and detail datasets and allows partial and generic range retrieval as well as sorted access. Superdex is an integrated addition via the Third-Party Indexing Interface (TPI) to TurboIMAGE. "It seemed like a good opportunity to help support IMAGE and IMAGE/SQL," says Tashenberg. Users can also anticipate the introduction of a report writer, report librarian and forms generation among other products from Bradmark.

Tashenberg thinks that the open systems concept is an excellent one. He says that for users, "it won't matter whether you are using HP 3000 or HP 9000 [systems], or Apollo workstations." But as an ex-MIS manager who replaced his first IBM mainframe with an HP 3000 more than 20 years ago, Tashenberg realistically knows that "only time will tell."

—George A. Thompson,
Technical Editor

EDA/SQL. The Standard In Client/Server Computing.



The Unique Middleware Solution For Accessing Any Data Anywhere.

EDA/SQL from Information Builders has become the standard for data access across all platforms, within any enterprise-wide client/server architecture.

Because no other middleware product can match the transparency and language consistency of EDA/SQL as a gateway to Sybase, Oracle, DB2 and most other major databases—even all of your legacy data. Nothing else can match EDA/SQL's compliance with DRDA, TCP/IP, ODBC and many other important protocols or its range of support for every type of network.

Which is why it's been endorsed by every major vendor in the business, from IBM to Microsoft, and is the middleware of choice for the vast majority of Fortune 1000 companies.

DESKTOP TO DATA WITH ZERO PLATFORM DEPENDENCE

Unlike other middleware products EDA/SQL isn't dependent on a single proprietary architecture. Any user, whether they're on a corporate LAN or connected to a departmental server, can get to any authorized data, wherever it resides.

From simple ad-hoc queries to OLTP transactions, EDA/SQL's scalability guarantees platform independence. And its flexibility lets you work in SQL-based applications using data from any database, relational or non-relational.

HOW, AND WHY, EDA/SQL CAN GET THE DATA OTHERS CAN'T

EDA/SQL includes a complete suite of data management services, interfaces, and

tools for accessing and managing data within any client/server architecture.

No other middleware product can get to, analyze, and scrub imperfect data like EDA/SQL so it can be delivered to any DBMS engine, rightsized for any platform, and made accessible from any remote location.

In fact, only EDA/SQL gives you a combination of real-time cost management, user profile control, and a custom approach to data access.

For more information on how EDA/SQL can maximize the effectiveness of your client/server environment, or to attend a FREE Seminar...

CALL 800-969-INFO

In Canada call 416-364-2760

**Information
Builders**

CIRCLE 247 ON READER CARD

A Diamond In The Rough

James Avery Finds A Real Gem With CA Unicenter

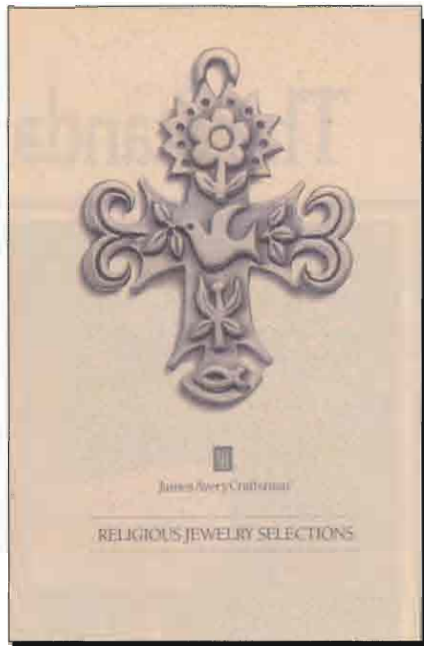
For auditors, there are two kinds of controls: effective and ineffective. For John Pittman, vice president of MIS for James Avery (Kerrville, Texas), a privately-held jewelry manufacturer and retailer, the need for effective control is an inherent part of his thought process. So that's exactly what Pittman, a former EDP auditor for 12 years, was thinking when he began looking for products that would help him control his HP-UX environment — tape backup and recovery, tape library management, front-end security and problem management tools.

But until Pittman discovered CA Unicenter from Computer Associates International (CAI; Islandia, N.Y.), there wasn't much to be found. All the other products that he had seen "were point solutions that wouldn't interact with anything else."

With IBM mainframe experience, Pittman was already familiar with some of CAI's products. He was further intrigued when he discovered that CAI was not merely converting their mainframe product but rather porting their technology and designs to "make those kinds of control mechanisms available to midrange users." Pittman eventually became one of the first

to acquire and install CA Unicenter, but even after an effective product demo, he was still skeptical.

Faced with HP 3000/MPE applications that pre-dated him by about 15 years, Pittman "recognized that we couldn't handle the future of [James Avery] with the old undocumented, unsecured, poorly designed, poorly executing 3GL application software." So three years ago, he began moving to HP 9000 systems running HP-UX.



An HP 9000/807 and an HP 9000/827 are already running within the company's corporate headquarters and a new HP 9000 G50 is destined to become a production system. According to Pittman, those systems exchange

continued on page 32

Starting From Scrap

Most companies know who to contact when they are looking to purchase new computer equipment, but many don't have any idea where to take the equipment when the time comes to get rid of it. A recent study by the Carnegie-Mellon Foundation predicted that unless this quintessential ecological problem is addressed, 150,000,000 machines — enough to fill the Empire State Building three times over — will wind up in landfills by the year 2005.


Tom Buechel, owner of Rockaway Recycling (Rockaway, N.J.) has been collecting various metals, including aluminum, brass and copper, to be recycled for the past 17 years. In 1980, a contractor approached Buechel with a new item — five computer circuit boards. Since then, Rockaway Recycling has collected various

computers and related equipment for the gold and other metals that are found on them.

Rockaway Recycling is currently collecting electronic inventory, which sometimes amounts to an entire computer room, from a number of sources. Aetna, AT&T, Chase Manhattan Bank, Chemical Bank, E.F. Hutton and Prudential are among Rockaway's major clients. Buechel says the scrap business has slowed because many of the mainframes are already gone, but it will not vanish overnight. "We are still getting the scrap from multimillion dollar systems that were generated in the '70s and '80s." Rockaway services an area that covers Massachusetts through Virginia.

When Rockaway receives a shipment of computer equipment,

continued on page 32



**I hear HP
has ObjectCenter
on their UNIX
machines now.**

Yep.

**Think I'll call
for a demo.**

News travels fast. Hewlett-Packard UNIX workstations now run ObjectCenter™ for C++.

So developers who want to program on HP's hottest boxes, like Hewlett-Packard Series 700 workstations, can do it in an environment that lets them work the way they're used to. Intuitively.



**Channel
Partner**

Creatively. Because ObjectCenter on HP helps you develop code interactively. Write some code, test it, and change it—all

without breaking stride.

Plus, the ObjectCenter/HP combination makes object-oriented programming a reality. For example, say you want to explore how a C++ class works. With ObjectCenter, you can create an instance in the interactive work space and simply try it out. So you don't waste time writing test driver code. No other C++ toolset supports this kind of interactive unit development. And with HP's reputation for performance, you know you'll have all the workstation power you need.

We'll prove it. Just call 1-800-NOW-CNTR. And we'll send an evaluation copy of ObjectCenter on HP (it's free to qualified developers). Or arrange a demo of CenterLine Software on HP hardware. So you can sit a spell, and try both yourself.



CENTER LINE™

Formerly Saber Software

10 Fawcett Street, Cambridge, MA 02138 • (617) 498-3000

CIRCLE 274 ON READER CARD

Diamonds continued from page 30

production data (off-line) with MPE-based MicroGX systems in 26 company-owned, retail stores.

After a year "in production mode," Pittman expects to complete the conversion to HP-UX by the end of 1994. Besides providing the data center management tools that he had been searching for, Pittman was impressed by CA Unicenter's integration and by the graphical user interface (GUI). With a GUI, Pittman "saw the real potential for making things meaningful and making the job easier for people."

Pittman's staff, however, had no prior experience with UNIX. "They were familiar with and liked MPE," says Pittman. Although the advantages of using UNIX were unclear at first, the fears and anxieties are gradually being overcome. Pittman admits that there was quite

a bit of resistance in the beginning. "Old loves, die hard," he says philosophically. But after two years through the conversion, his staff has made the adjustment. "They are now looking for the system to help them out, and to do some of the work and provide information to them." It hasn't been easy, but Pittman thinks it's been more than worth it.

And with CA Unicenter, Pittman feels his efforts will not be in vain. "I've now got the sophistication of other products that were designed to run on a mainframe system, that typically were not available in a mainframe or MPE environment, with better integrity and control over our processes than we ever had before."

Pittman, however, candidly admits that he has "only implemented a couple of CA Unicenter's appli-

cations so far" and he feels CA Unicenter "still has a long way to go" before they match the virtually flawless operation and unquestioned capability that's taken for granted in mainframe environments. Nevertheless, CA Unicenter has so far helped Pittman take some the "mystique out of tasks like file archiving and tape retentions."

However, there's been no mystique when it comes to CAI's support. Pittman knows that sometimes smaller companies like James Avery don't get the same attention as bigger companies which spend larger sums of money with a particular vendor. But Pittman says that CAI's level of support has been nothing short of outstanding. "They have given us an incredible amount of one-on-one attention," he says. "They are constantly in communication with me and my technical staff."

Pittman recognizes a diamond in the rough when he sees one. Like an uncut gem, Pittman appreciates the potential of CA Unicenter and knows that it will take some polishing. So, although there are some problems now, he expects that CA Unicenter "is going to be a world-class piece of software pretty soon." According to Pittman, CAI is now in the process of perfecting their product. And for him, "having something and perfecting it is a far cry better than having nothing at all."

Pittman, however, thinks his mainframe mentality doesn't always mesh with the majority who "seem to think of control as being overhead or something that is going to encumber people." But Pittman doesn't see it that way. "To me it's just a part of prudent business practice to get these kinds of controls in place so we can then manage our own environment."

*George A. Thompson,
Technical Editor*

Scrap continued from page 30

it ends up in one of two locations. The better equipment — the one's with a higher gold content — are stripped down on the spot. The circuit boards, copper wires and back panels are melted down and recycled. The steel frames that re-

fans, hard drives, floppy drives, print heads, etc. are then resold. Second Byte also builds custom configurations of new systems.

A popular attraction at Second Byte is a warehouse that is referred to as "The Hacker's Hangout." The equipment found here ranges from systems manufactured in the '60s, '70s, '80s and '90s and many of these products are sold at substantially lower prices. Buechel says, "Test equipment that might have cost \$3,000 ten years ago, is now sold for \$100."

As long as the need is there, Buechel intends to continue recycling computers. He says Rockaway Recycling operates with two mottos: "Fair weight, fair price" and "Join the green movement today."

*Deborah Schwartz,
Assistant Editor*



main are compressed into large bricks and then sold to a junk yard.

Newer equipment is sent to Second Byte Computers (Dover, N.J.), a division of Rockaway Recycling. The technicians at Second Byte strip the bad parts off the computers, and then recondition, refurbish or upgrade the systems. The computers, memory chips,

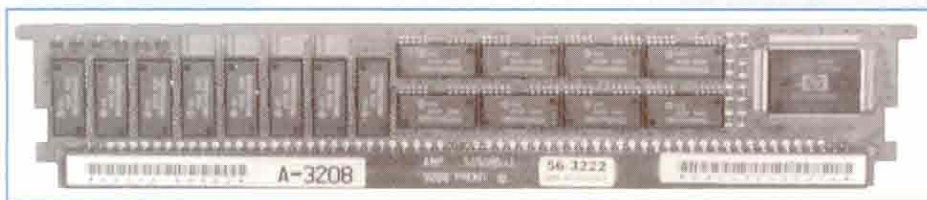


Expand your memory

INFOTEK XM700-32



...NOT YOUR BUDGET



HP 32MEG BOARD

When it comes to memory expansion, Infotek has set the standard for compatibility and reliability, all at a reasonable cost to you. Infotek has been the leading supplier of DRAM memory for HP's series 300, 400, 700,

800, and 900 computer systems since 1976.

Infotek also offers a range of instrumentation products for HP's series 300 instrument controllers as well as a number of SCSI peripheral disk systems and

stand alone SCSI drives. If you own a 720, 730, or 735 computer, ask about our EMS upgrade kit, which allows you to double your maximum memory capacity and quadruple your disk drive capacity in the existing CPU chassis.



800-828-0414 (503) 883-3900 FAX (503) 883-8042
1120 Spring Street, Klamath Falls, Oregon 97601



In The

Midst

Of It

All

IT'S A TOPIC that can keep any computer industry gathering in gab gridlock longer than it took to focus the Hubble telescope. How to pave the information superhighway?... Not a bad guess, but for days of guaranteed discourse and disagreement, ask about "middleware." Have I touched a nerve?

Middleware, in its simplest terms, resides between the operating system and your applications. These are the invisible, logical connections and translators crudely called middleware; the strings, springs and ends of things that make much of computing, particularly networked, client-server computing, work.

Paul Mason, manager of system level software for International Data Corp. (IDC; Framingham, Mass.), whose job it is to have the last word on the middle word prefers to think of middleware as software that acts as a translator between systems that otherwise

Everywhere, Yet Nowhere.

What And Where, Is This

Thing Called Middleware?

BILL SHARP



In The Midst

can't communicate. "It's sort of like an interpreter at a U.N. meeting," says Mason. "An Israeli is talking to someone from Japan, so you get a person in the middle to translate."

According to Mason if a utility residing on Novell NetWare pulls down a file from your mainframe or HP 3000, so that all you see is a file name in your desktop PC windows environment, that utility qualifies as middleware. Mason says the earliest reference to middleware he can find dates back 10 years to a small software company. So the term has been knocking around for some time, even though its acceptance in the vernacular has been, shall we say, middling.

In The Middle Of Things

PIETER R. MIMNO, PRESIDENT of Technology Insight Inc. (Marblehead, Mass.), a consultant and expert in client-server development tools lists specific middleware functions as (*see diagram*):

- Object management
- Network management
- Global naming
- Remote procedure call (RPC)
- Version control
- Configuration management
- Security
- Transaction manager

He points out that support of middleware is by no means complete among application development tools. UNIX client-server development tools lack middleware support for the most part, because vendors are waiting for standards pending from the Open Software Foundation (OSF; Cambridge, Mass.).

While Mimno's list includes many functions that have been

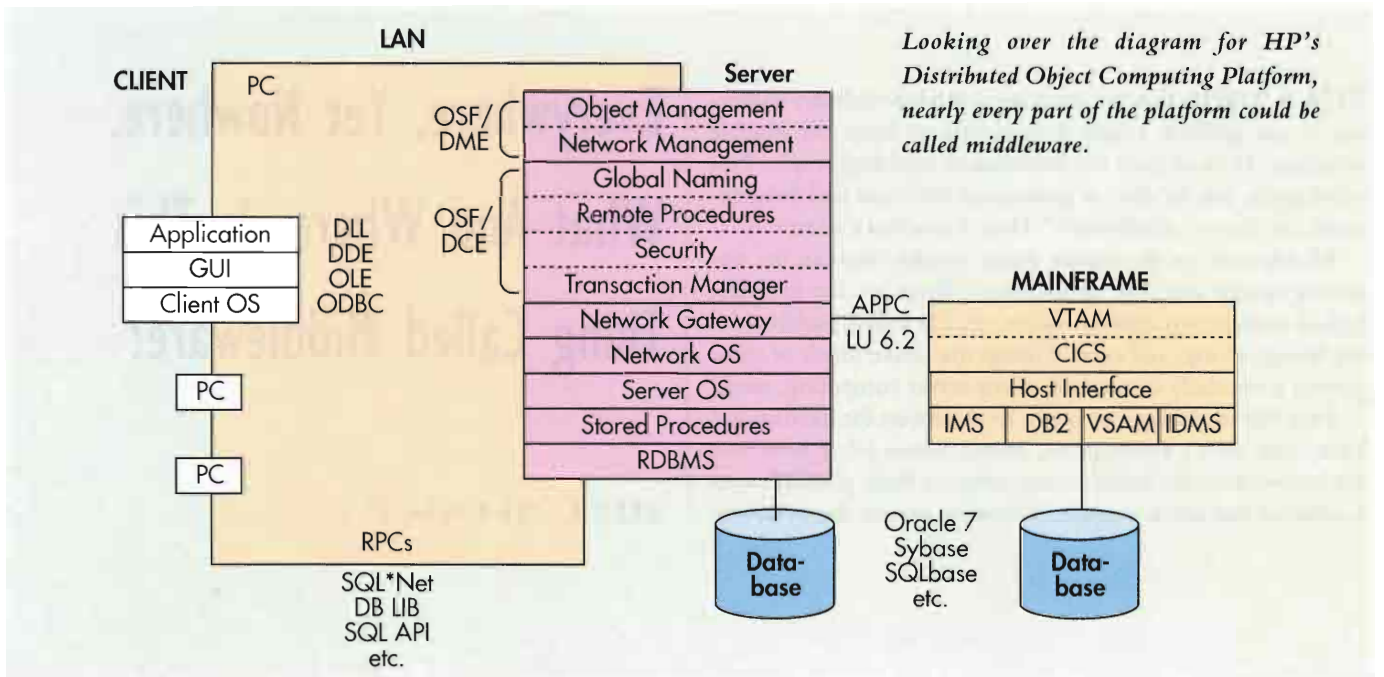
called middleware, his list is not all-inclusive. Because it links disparate systems to make communication possible, a gateway from your client-server system to a mainframe qualifies as middleware, as does any SQL function that communicates with an otherwise incompatible system.

Middleware can be as complicated as the software spanning and connecting several different systems in succession to retrieve data. Or, it can also be as deceptively simple as a printer driver. Another point made by Mimno is that middleware must follow the trends of the marketplace. Because Windows dominates the desktop, client applications and the middleware connections they use must play along with Windows. On the server end, there is no dominant set of standards as yet.

Because of this variation, users planning for the long term, or building large systems, need to think about middleware. "Vendors seek to lock users into dependence on a proprietary middleware product," says Mimno. "The only way to avoid that is by rigidly enforcing standards." Within your organization, this may not, in fact, mean picking an industry standard, but standardizing within your company to make your systems as compatible as possible.

The benefit of industry standards is that they generally increase your selection of solutions, while enhancing competition and holding prices down. Mimno advises looking for client-server development systems that support OSF's DCE and DME standards for middleware connectivity on servers. He further advises growing into development systems that support the Object Management Group's CORBA specification.

There is by no means unanimous approval on the meaning of middleware. Tilman Schad, general manager of the Software Business Unit within the HP Computer System Organization, has developed a healthy distaste for the term. "I try to avoid the [middleware] term," says Schad. "Middleware is the soft-



Looking over the diagram for HP's Distributed Object Computing Platform, nearly every part of the platform could be called middleware.

You Might Be Surprised By What Some Financial Management Software Vendors Mean By Client/Server Architecture.



Before you invest in accounting software that promises client/server functionality, you better be sure it isn't based on a make-shift architecture.

While most software vendors claim they have "true" client/server systems, you may be surprised to find many who simply patch front-end gadgets onto their existing accounting software and label them "client/server." The fact is that these imitation client/server systems were not designed with the flexibility to meet the diverse needs of your users or to access real-time financial

information without being hindered by performance issues.

At Mitchell Humphrey & Co., there are no surprises. Our latest release, FMS II, was designed from the ground up with flexible client/server implementation and high performance as primary goals. You can choose where and how the processing will take place and still be confident FMS II will provide consistently powerful functionality.

The object-oriented design and layered architecture of FMS II is portable across the HP 3000 and HP 9000 platforms, as well

as a wide variety of data bases, networks and graphical user interfaces. Furthermore, FMS II has tools for customizing screens, menus, function keys and forms, along with powerful scripting features for automating repetitive tasks.

So, if you are looking for financial management software that has no surprises, contact Mitchell Humphrey & Co. at (800) 237-0028.

MITCHELL HUMPHREY & Co.
Exceptional Software for Exceptional Organizations

© 1994 Mitchell Humphrey & Co.
CIRCLE 154 ON READER CARD

**See Us at Executive Interex, Booth #515
& Uniform, Booth #5303**





In The Midst

ware equivalent of the client-server [hardware] architecture.”

Instead, Schad generally uses a specific word for the function being discussed — for example, data management services. To Schad, the software in question is designed to manage the decentralized infrastructure for mission-critical applications. The term middleware “leads to a lot of misunderstanding,” he says.

Confusion results from the speed at which the computer industry and its markets evolve. “A year ago, graphical user interface (GUI) building was part of CASE — now it is part of the operating system,” says Schad. “As soon as you agree on a definition, the world moves away from it.”

Fierce competition drives firms to attempt to redefine and partition the market in ways that are advantageous to them and disadvantageous to competitors — in other words, to carve out market niches. Because they can evolve far more quickly than hardware, software applications and middleware are the chief tools of this battle. Often, what looks like an improvement in an application is in fact better middleware. When a word processor pulls data from files built by a competing system in a different format, the improvement is superior middleware.

Same Words, Different Issues

DISAGREEMENT OVER MIDDLEWARE is anything but unusual these days, says Asa Lanum, senior vice president of the Technology Division for OpenVision Technologies Inc. (Pleasanton, Calif.), “You can have two people arguing vehemently about this using the same words and suddenly realize you are talking about two completely different things.”

Lanum, who travels to Europe for standards discussions, finds wall outlets to be a useful middleware analogy. “But from one country to another those outlets have different voltages, frequencies and socket shapes to provide our basic electrical systems and services. As a vendor, we make, let’s say, blenders and toasters. We want to plug [them] in, but we can’t depend on the [proper] voltage, current or socket. So you end up with a box of adapters that you carry from country to country to get them all to conform to some standards. We can call that box of adapters ‘middleware.’”

In an example of middleware run amok, one user bought OpenVision’s high-availability software product, which maintains a Sun computer in a standby, “hot” backup mode. In order for this feature to function properly, all the systems had to be linked in a network that used global naming (middleware) to effectively identify all the systems on the network.

Two networks were combined to take advantage of the new capability, only to find that one of the major systems on the network immediately powered down. Apparently, two systems on different networks were given precisely the same name. When the networks were combined, one of the two identically named systems reacted as programmed, and removed itself from the network.

Keeping tabs on the status and progress of middleware is an important part of the job for information systems managers.

MIS managers may find themselves more a keeper of connectivity and standards than of any particular hardware or even software — ensuring that systems will function seamlessly to get the job done will be the measure of success. To keep the connections effective, the MIS manager must know enough about middleware to ensure that the connections between systems are clean and efficient, not muddled and ineffective.

“You have to think about middleware,” says Greg Thomas, director of information services for the Washington County Education Service District (Portland, Ore.), “You have another layer that you have to be cautious about that links to tools on both the client and server sides.” But used properly, middleware connections make for some impressive solutions.

School libraries in Washington County now share a common TurboIMAGE database card catalog on an HP 3000. In order to allow hundreds of PCs in different schools to link to the HP 3000, Thomas used a WAN link to a LAN backbone that includes the HP 3000 as well as three other servers. His team wrote a Windows front-end using Visual Basic. Using the Reflection Software Developers Kit middleware from Walker Richer & Quinn Inc. (WRQ; Seattle, Wash.), the application builds a table of addresses on the backbone so inquiries go to the appropriate server.

“Each time you bring in a new tool, you face that middleware issue,” says Thomas. “Because of the dynamic nature of the market, you have to develop at a breakneck pace.” So, by making the best possible use of his middleware tools, Thomas hopes to continually speed the process of bringing new applications online, cutting development time by 60 percent.

But middleware remains confusing, and some, like HP’s Schad, would prefer to banish the “M” word altogether, insisting on more specific terms. But still there is an undeniable allure to an all-encompassing term. Maybe it should be called Everywhere. Almost Everywhere? Of course, because it underlies all mission-critical client-server applications, why not call it — Underware.

Would you like to continue to see articles on this topic?

Circle on reader card

yes 350 no 349

Companies Mentioned In This Article

International Data Corp.
5 Speen St.
Framingham, MA 01701
(508) 872-8200
CIRCLE 344 ON READER CARD

Technology Insight Inc.
33 Washington St.
Marblehead, MA 01945
(617) 639-2570
CIRCLE 340 ON READER CARD

Open Software Foundation
11 Cambridge Center
Cambridge, MA 02142
(617) 621-8700
CIRCLE 342 ON READER CARD

Walker Richer & Quinn
1500 Dexter Ave. N.
Seattle, WA 98109
(206) 217-7500
CIRCLE 339 ON READER CARD

OpenVision Technologies Inc.
7133 Koll Center Pkwy.
Pleasanton, CA 94566
(510) 426-6400
CIRCLE 341 ON READER CARD



You're Here.



Your Data is Here.

Send your data on a working vacation and when disaster hits, it will be miles away, safe, protected and working for you.

Whether it is a minor power failure or a full scale disaster, NetBase from Quest Software brings users back on-line in minutes. Use NetBase to

replicate complete application environments anywhere in the world and you will achieve a worry-free computing environment.

NetBase is designed using standard networking capabilities, to function through all modes of operation and failure, including system backups, link failures, and hardware failures.

NetBase won't prevent natural disasters from happening but it will minimize the crippling effects they have on your business.

Call Quest Software for more information 714-720-1454.



QUEST SOFTWARE



CIRCLE 175 ON READER CARD

See Us at Executive Interex,
Booths #424 & 426

Net

WHERE

*Coming Soon To
PA-RISC Server
Near You*

● ● ON DECEMBER 10, 1991, when Ray Norda, CEO of Novell Inc. and then Hewlett-Packard CEO, John Young formally announced a cooperative agreement between the two companies, expectations were high. HP and Novell had been working on

ROSEMARY DEVERE



23:30

Lights Out
Operation

12 Tape Autochanger For Unattended Backup!

Herstal's DAT Autochanger provides up to 96 Gigabytes of **Unattended Backup** so you can enjoy a good night's sleep without worrying about who or what is backing up your data.

Available as an **upgrade to your existing HP DDS drive**, or as a subsystem containing HP's new 8 GB drive, our Autochanger is the perfect solution for your backup needs.



3171 W. Twelve Mile Road
Berkley, MI 48072-1339, USA
Phone: (313) 548-2001
Fax: (313) 548-2010

CIRCLE 173 ON READER CARD

By 1996, the application server market will account for 30 percent of all LAN server sales; file servers will account for the other 70 percent.

over 30 joint projects across 12 HP divisions over the past five years. But the development of NetWare for HP's PA-RISC platform (internally code named Piranha) created the most excitement. However, the wait will be over in the second quarter of 1994 when the final product will be introduced.

HP has been working with Novell to create the interface between Processor Independent NetWare (PIN) and HP's PA-RISC platform. Referred to as the NetWare System Interface (NSI), NSI binds PIN to the PA-RISC processor. The NSI allows Novell's partners to develop all underlying drivers and optimize this layer for their specific platforms. Any platform supporting PIN, including Intels, will need to have a similar compatible layer to tie PIN to the CPU. PIN, evolving from NetWare 4, therefore effectively removes CPU dependencies and provides the freedom to choose the best server platform

whether CISC- or RISC-based, for global, heterogeneous networking applications.

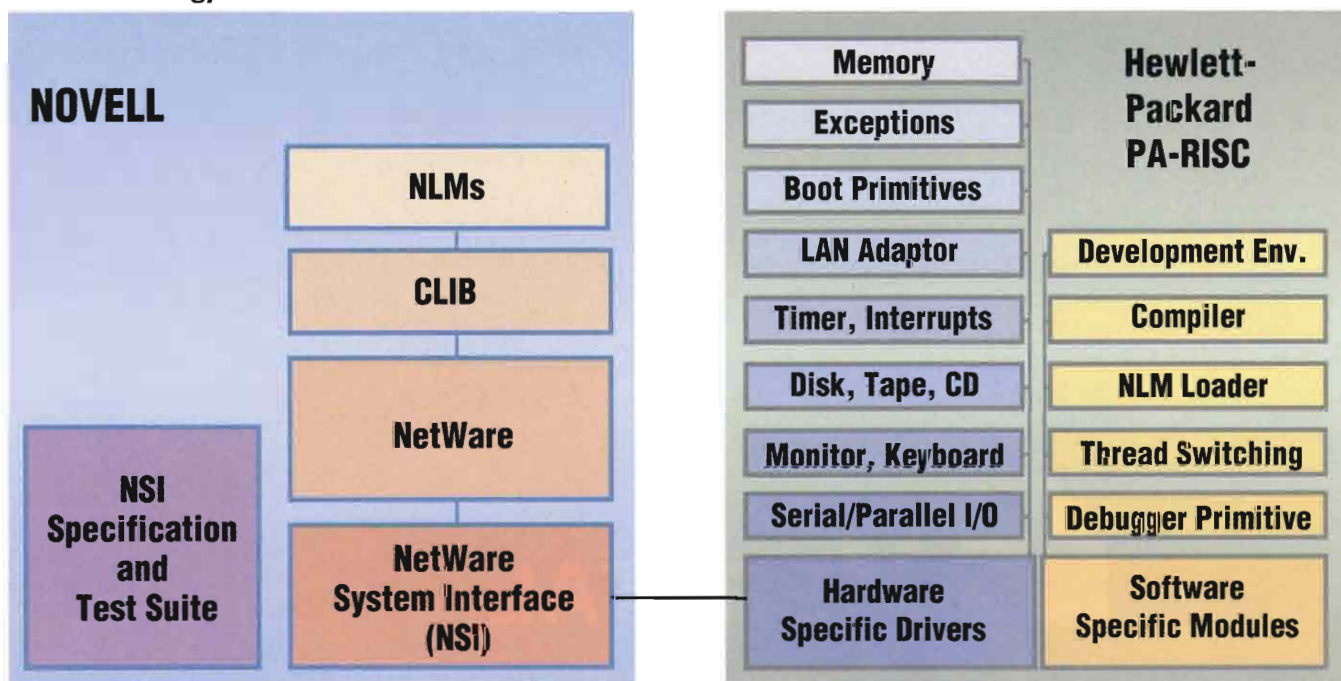
Enterprising LANs

INTERNATIONAL DATA Corp. (IDC; Framingham, Mass.) estimates that there will be an approximately 36 percent compound annual growth rate (CAGR) in the application server market (the server is dedicated to an application). By 1996, IDC estimates that the application server market will account for nearly 30 percent of all LAN server sales; file servers will account for the other 70 percent.

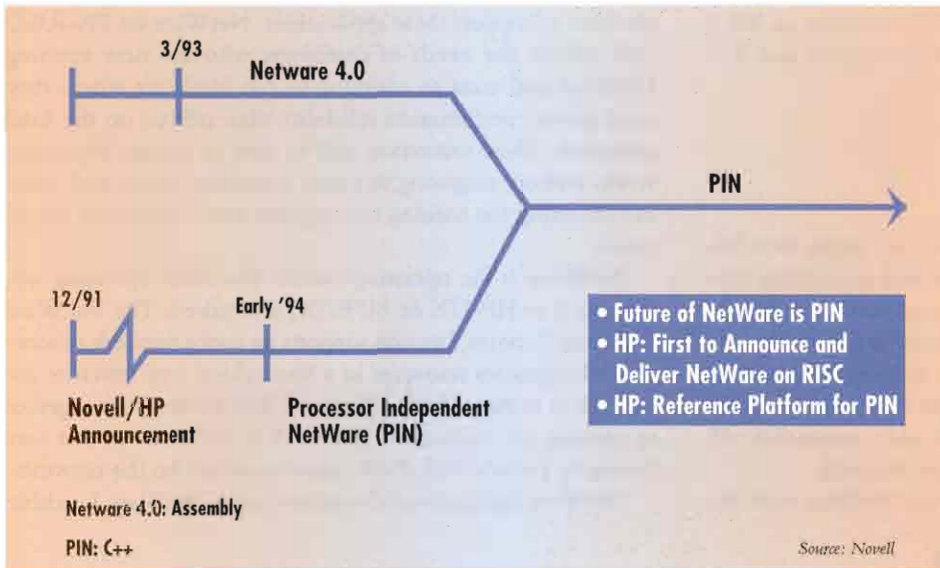
The growth is being fueled by the availability of high-end LAN operating systems with directory services, routing functionality and network management capabilities. These capabilities require an increase in overall system performance, as well as a requisite increase in memory, storage and reliability. In other words, LANs are taking on some of the mission-critical characteristics required within complex enterprise networks.

NetWare on PA-RISC will fill the gap between the file and print services usually available on Intel CPU-based servers and the multiple applications, OLTP and development tools traditionally available on mini- and mainframe computer platforms like the HP 3000 or HP 9000. For example, in the next several years, applications like database, E-mail, fax, communications (LAN-WAN gateway) and workgroup for calendaring and scheduling will play a key role in the growth of the LAN server market.

PIN Technology Architecture



Source: Novell



NetWare Evolution

mance of over 300 TPS. Designed to compete with PC servers using Intel's 66 MHz Pentium microprocessor, it can be classified as a super-server.

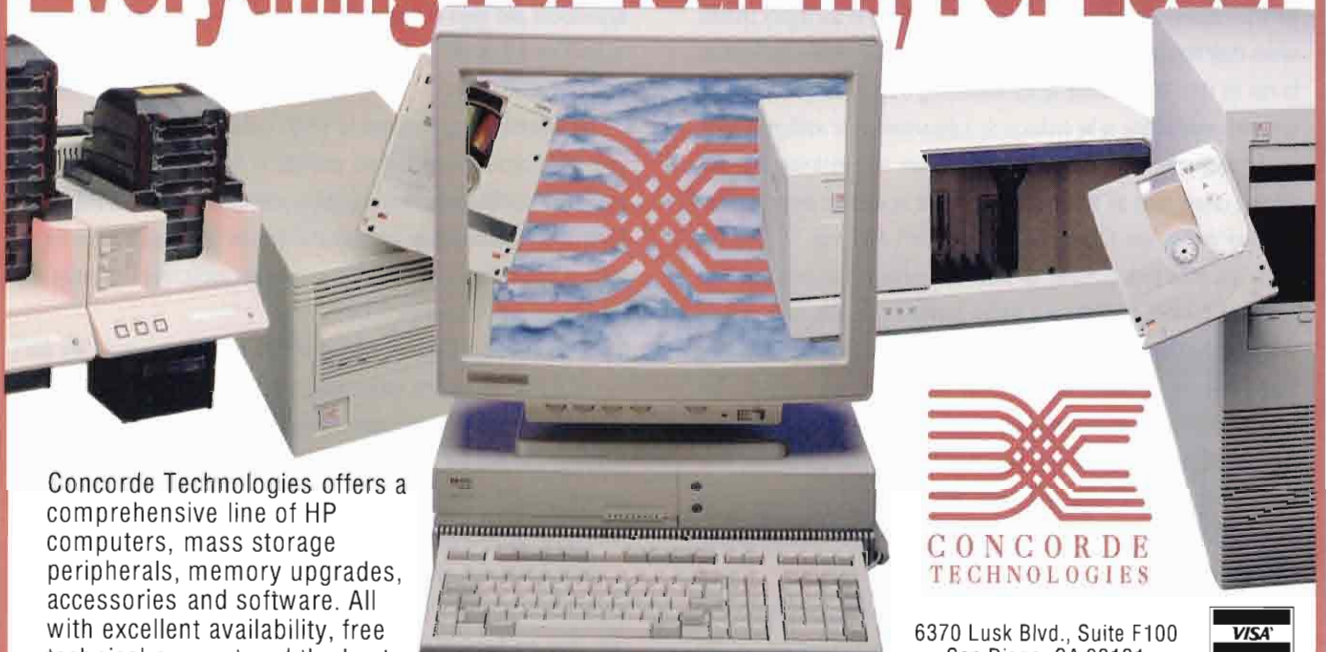
In most NetWare servers today, the bottleneck is in the disk I/O. Therefore, there should be two buses — one to support LAN traffic and the other to support disk I/O. The server is designed with an eight-slot EISA bus for LAN traffic, and a 100 MB bus with several slots for disk I/O.

Consequently as networks grow, companies should be able to take advantage of the NetWare on PA-RISC server's scalable and expandable features.

In addition to eight accessible front disk drive bays, and double-wide SCSI disk interfaces, memory expandable to 512

Using HP's PA-7100 CPU, the same CPU architecture used across HP's entire computer product line, the uniprocessor NetWare on PA-RISC server is expected to deliver a perfor-

Everything For Your HP, For Less!



Concorde Technologies offers a comprehensive line of HP computers, mass storage peripherals, memory upgrades, accessories and software. All with excellent availability, free technical support and the best possible prices.



6370 Lusk Blvd., Suite F100
San Diego, CA 92121
(619) 458-0702
FAX: (619) 458-0722



We're Your "Hewlett-Packard Experts"
(800) 359-0282

CIRCLE 232 ON READER CARD



MB of error detection and correction (ECC) memory, an 802.3 Ethernet connection will be integrated in the system and Token Ring will also be supported.

Serving Two Markets

THE NETWARE ON PA-RISC server will satisfy two different market needs: server consolidation and application support. Server consolidation will enable IT professionals to reduce the support and cost required as servers proliferate in the enterprise. They will be able to reduce the number of servers in their environment, perhaps deploying older servers on the desktop, but they will also have the option to add a server that will help support expanding businesses and user demands.

NetWare on PA-RISC will now provide NetWare with the

platform to support these applications. NetWare on PA-RISC will address the needs of customers who are now running NetWare and want to continue to run NetWare where they need greater performance reliability than offered on the Intel platforms. These customers will be able to enlarge their networks without migrating to a new operating system, and without incurring the training and expense that a migration would entail.

NetWare is the operating system. No other operating system, such as HP-UX or MPE/iX, is required. The NetWare Directory Services function supports an entire network of servers and organizes resources in a hierarchical tree structure independent of their physical location. The servers work together to provide the resources required by a user without that user having to know where those resources reside on the network.

NetWare applications are referred to as NetWare Loadable

THE MISSING LINK?

An important entry into the network operating system (NOS) wars was made recently by Banyan Systems Inc. (Westboro, Mass.). With the introduction of Enterprise Network Services (ENS) for HP-UX, Banyan's ENS series (which also includes ENS for NetWare and ENS for SCO UNIX) is a marked departure from what other NOS vendors such as Microsoft and Novell are providing to their customers.

Usually, Novell and Microsoft want to provide the total solution. But when you move to their environments, you are only running LAN Manager or NetWare throughout the system. There is no provision to use legacy systems within their framework. You must rewrite and move your current applications to run on their NOS. Because of the downsizing craze of the last few years, customers were willing to be exclusive on a departmental or workgroup level. At the enterprise level, however, customers are now realizing that one solution cannot meet all their needs. There must be room to create business solutions that do not fit into any single vendor's NOS plan.

To use NOSs such as Novell on different hardware platforms, you must either use Portable NetWare or a Native NetWare port. But, both of these solutions have their limitations. Portable NetWare sits on top of an operating system and only provides file and print services to your network. The applications residing on that machine do not become available to users on the network. Native NetWare is a total replacement operating system. Your Novell server just gets larger and faster. While there are legitimate needs for those solutions, it could be just as easy to maintain the mainframe paradigm.

The Banyan ENS strategy allows customers to keep their applications and hardware platforms intact, while making them available to everyone on the network. ENS for HP-UX runs on top of HP-UX, it is not a replacement operating system. HP-UX users can now use any printer within the network, send messages to any user in the network, and most importantly, get easy

access to applications that don't reside directly on their machine. Through the use of ENS for NetWare and ENS for HP-UX, both groups of users can share applications quickly and easily while retaining the strengths of both systems.

Much of this is accomplished through StreetTalk, Banyan's Directory System. StreetTalk has always been a strength of Banyan. StreetTalk understands where users and applications are located throughout the network. This enables users to find what they need in the directory without having to know where it is physically or logically located. Network administrators can move machines, applications and users throughout the network easily. Even with the release of NetWare 4.0, Novell is still struggling to provide robust directory services on an enterprise level.

Jeff Bernard, channel manager for HP-UX at Banyan, explained that making your HP-UX-accessible applications available in the ENS network requires no application modifications. Once you define your application to the ENS for HP-UX system, it immediately becomes available for use. Banyan also has an optional developers toolkit that allows even tighter application integration with the ENS network framework.

Banyan's view of ENS is reminiscent of HP's NewWave strategy. "We don't care what you have running, we just want to be the glue to bind it all together." While HP is supporting this vision through DCE, Banyan is doing it already with their ENS product line. According to Bernard, "As the DCE specifications become available we will be able to integrate easily with it, and provide more value-added services on top of it."

Brad Askins, HP Channel Partner manager to Banyan, explained that corporations today are no longer looking at just the departmental or workgroup LAN. They are focusing on the enterprise network. Companies want to link all their various platforms together and preserve their current applications. ENS for HP-UX is a way to accomplish this.

—Tim Cahoon, Networking Editor

Modules (NLMs). HP is currently working with a number of software developers to port their NLM applications to PA-RISC. NLM applications that follow the NLM development guidelines, and do not make direct calls to the operating system or are affected by portability issues like byte alignment, will need only to be recompiled.

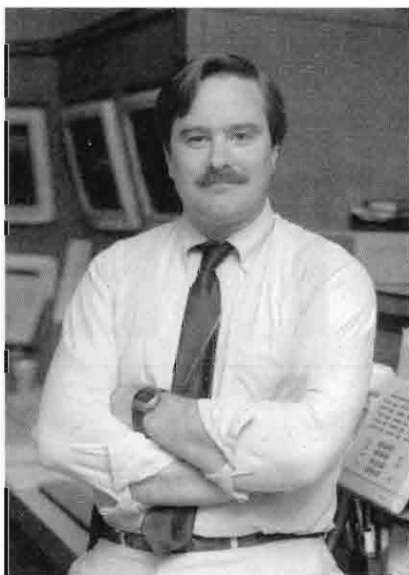
HP is working with vendors in the areas of database applications, document management, network management, UPS, and backup and recovery. Several companies have publicly announced that their applications will be available concurrently with NetWare on PA-RISC. These include Oracle for their Oracle7 Cooperative Server Technology database NLM, WordPerfect for their WordPerfect Office NLM and Cheyenne Software for their ARCServe NLM backup and restore software solution.

The HP and Novell relationship provides many benefits to customers who wish to go beyond LAN file and printer sharing, while those moving into client-server computing can continue to use the familiar Novell NetWare environment. For example applications, such as databases scale with the processor and will be able to support a greater number of users than on an Intel platform. Database applications can replicate sections of a central database and download the information from

NetWare is the operating system. No other operating system, such as HP-UX or MPE/iX, is required.

a LAN server, thereby off-loading the central server. Because HP recognizes the importance of industry standard hardware and software within LAN environments, the NetWare on PA-RISC Server will support EISA, SCSI and Ethernet interfaces. As HP introduces new processors, NetWare on PA-RISC will benefit from their increased performance. —*Rosemary DeVere is HP's channel manager for NetWare.*

Would you like to continue to see articles on this topic?
Circle on reader card
yes 346 no 345



TIM HEFLIN
Manager, End-User Services
Microsoft, Inc.

Network Topology: Ethernet
Networking Protocol: TCP/IP
Host: DEC VAX

“DynaComm® is Microsoft’s choice for terminal emulation.” It should be yours.

Evaluating terminal emulation software? Consider the one Microsoft chose for communicating across their world-wide network. FutureSoft’s DynaComm for Windows™ offers a single solution for PCs communicating across multi-platform networks to host computers.

DynaComm features:

- 16 Terminal emulation types for UNIX, DEC, Hewlett-Packard, IBM, and Data General systems
- 19 Network interfaces including TCP/IP and IPX
- Powerful development tools for creating GUI front ends to host applications

800-989-8908

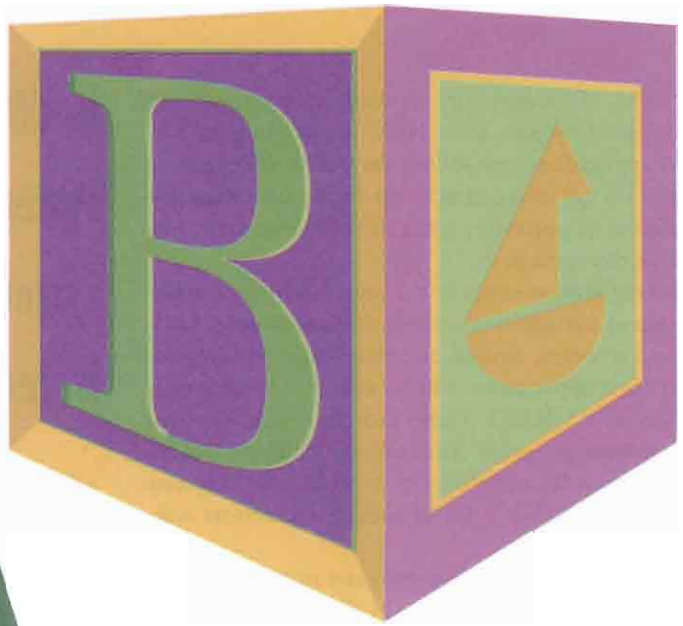


FutureSoft

12012 Wickchester Lane, Suite 600 • Houston, Texas 77079-1222 USA
713.496.9400 • 713.496.1090 FAX • 800.989.8908 Sales (USA)

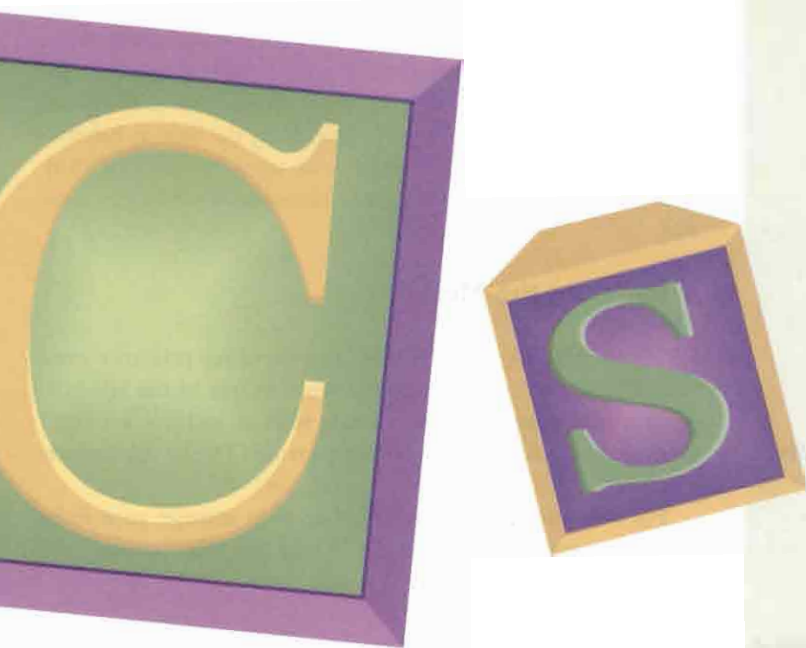
Windows is a trademark of Microsoft Corporation. Microsoft is a registered trademark of Microsoft Corporation. DynaComm and FutureSoft are registered trademarks of FutureSoft Engineering, Inc.

CIRCLE 190 ON READER CARD



of HP-

Admin



SAM Can
Lend A Hand
To Administrators

UNIX System Installation

U

NIX system administration has often intimidated non-UNIX system administrators. However, because of HP's strong emphasis on commercial UNIX, much of the functionality found in proprietary operating systems is now available on HP-UX. These include production scheduling, application optimization, performance diagnostics, output spooling, workload management, archival management, fault management and high availability.

Marty Poniatowski



Most routine HP-UX system administration tasks can be performed using the System Administration Manager (SAM).

But what about basic HP-UX system administration? UNIX was originally designed to sit on the desk of a scientist or engi-

neer who needed all of his or her intellect just to add a printer. Now, however, improvements have been made in routine system administration on HP-UX. Most routine HP-UX system administration tasks can be performed using the System Administration Manager (SAM). *Figure 1* is the top level menu of SAM and shows the categories of system administration you can control.

What's On the Menu?

KEEP IN MIND, HOWEVER, that these are primarily routine tasks. If you need to perform work in one of the HP-UX systems management services areas, such as archival management, you would use an interface provided by the application vendor.

For example, you can use SAM to help manage your disks and file systems by selecting the "Disks and File Systems" on

A GRAND PERFORMANCE

Performance monitoring and tuning are becoming increasingly important in all types of HP-UX installations including centralized, commercial-oriented installations as well as widely-distributed installations.

Several HP-UX commands give you a quick look at what is taking place on your system:

iostat to get input/output statistics on devices such as disks and terminals, as well as a CPU utilization.

vmstat to get virtual memory statistics and CPU utilization.

netstat to get network statistics.

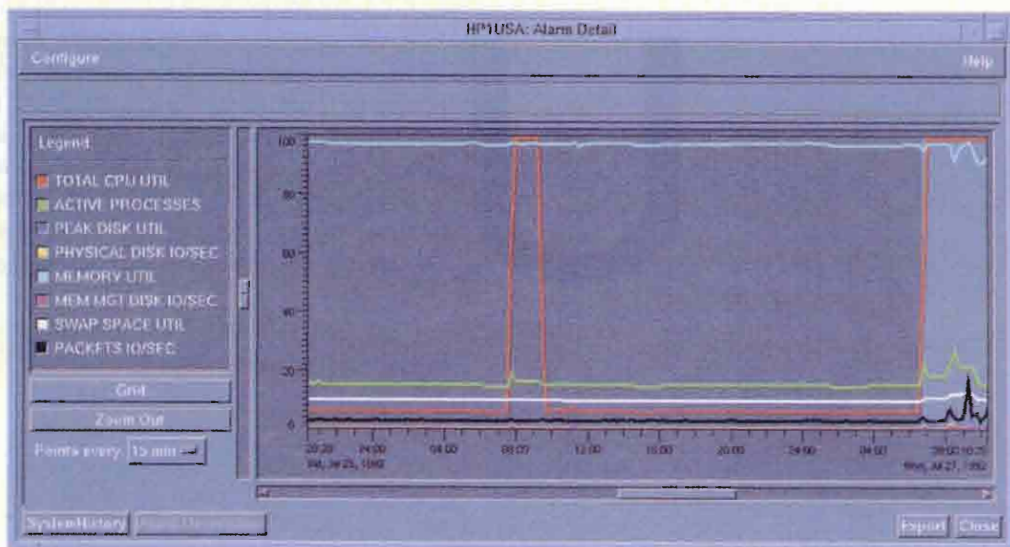
ps to get a list of processes and information on each process.

These commands produce snapshot results, but you don't get much information over an extended period of time. If you want or need to get more information about your system over a period of a day to a month, enable HP-UX accounting. At the end of each day and month, an accounting report is produced which provides the amount of system resources each user and application is consuming.

To take the analysis of your system beyond built-in HP-UX commands and built-in accounting, you can use some add-on products to assist you further. Two tools used in HP-UX installations are HP GlancePlus and HP PerfView.

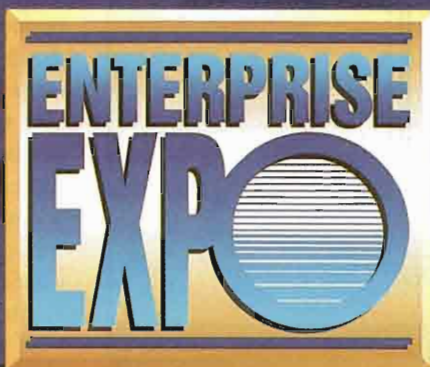
GlancePlus is a real-time performance monitoring and diagnostic tool. GlancePlus provides functionality that is far better than using the HP-UX commands and accounting. For instance, with GlancePlus you can graphically display the amount of CPU, memory, disk and network being consumed on your system. You also can get information on specific processes.

HP PerfView is used to centrally manage system performance in a distributed computing environment. If you have a large network of systems then PerfView is the performance tool for you. *Figure 4* shows a PerfView alarm screen showing activity on a specific system at the time an alarm occurred.



The Conference And Trade Show For IBM Host-Based Enterprise-Wide Computing

Orlando,
Florida



April 5-8,
1994

Finally! Here's an event designed to give you the help you need today and tomorrow – help to tackle the complexities of your large systems in a Client/Server world.

Over 120 sessions offered in these conference themes:

I/S Management
Application Development
Network Communications
Enterprise-Wide Printing

Storage Management
Operating System Platforms
Database Management
Data Center Operations

Throughout every theme, you will find hard-hitting topics focusing on Client/Server and Open Systems environments. *This is the place to ask questions — and get answers. Gain insights from industry experts:*

Nick Donofrio
IBM Sr. V.P. & General
Manager of IBM Large Scale
Computing Division

Ed Zschau
IBM V.P. & General
Manager of IBM
Storage Systems Division

Industry Perspectives:
SYSPRO, Inc.;
ACTS Corp; and
MIACO Corp.

With all of this added to ENTERPRISE EXPO, it's sure to be one spectacular event – an event that will keep you at the forefront of information technology!

Make your reservations today.
Call 1 800 426-8322, ext. 850
Conference Code E5400

 Skill Dynamics
An IBM Company


Founding Sponsor

Produced By:


JOURNAL


JOURNAL


JOURNAL


JOURNAL

For more information, call or write George Dishman: 12225 Greenville Ave., Suite 700 • Dallas, Texas 75243 • 214.669.9000 FAX 214.669.9909

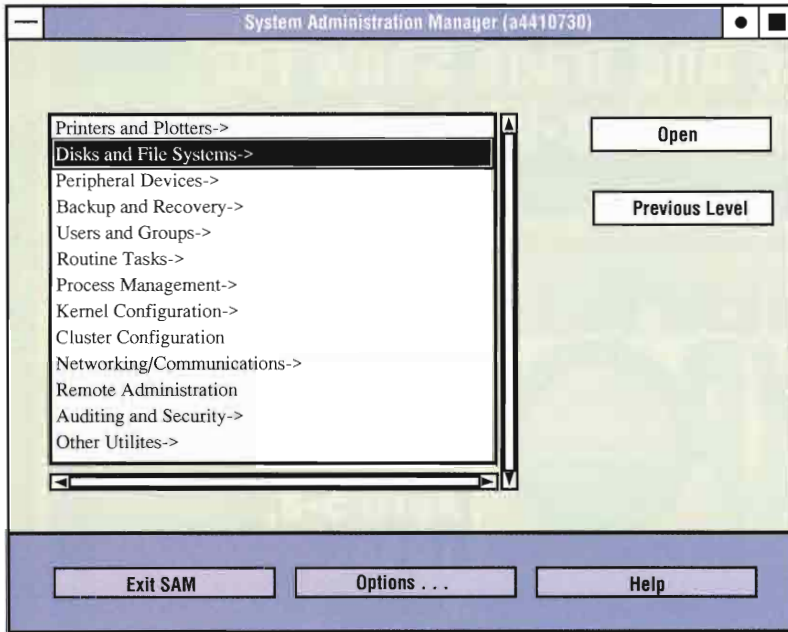


FIGURE 1

To add a disk using SAM, you would use the actions menu and fill in the appropriate dialog boxes. To manually add a disk you would have to perform such tasks as creating the device files for the disk, initializing the disk with **mediainit**, making a file system with **newfs**, creating the directory to act as the mount point for the disk and adding an entry to the `/etc/checklist` file to automatically mount the filesystem at boot. SAM makes adding a disk significantly easier.

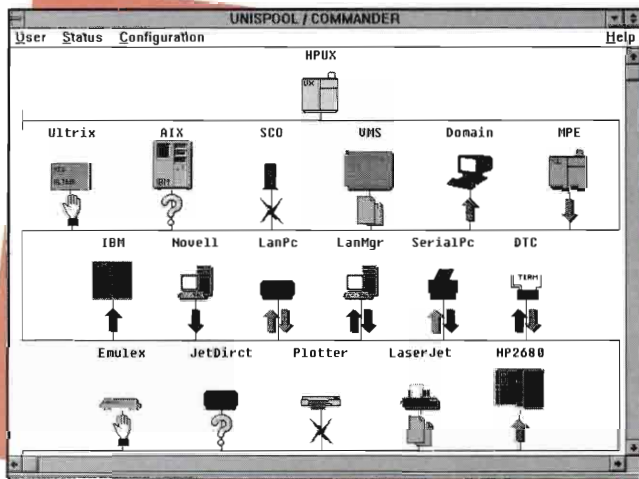
Does using SAM mean HP-UX system administration is now a cookbook set of routines and the command line is not required? No.

If you use SAM to add a disk, and you aren't sure of the effect this will have on the HP-UX system, then simply don't use SAM. SAM makes performing routine tasks quicker and easier; it is not

the menu. Figure 2 shows what you see when you select that menu, including a window that describes the tasks you can perform.

a substitute for the knowledge a system administrator should and must have, although there is a lot of uncertainty regarding what specific HP-UX knowledge is required. Usually, system

Single-Point Control of Printing UNISPOOL/Commander



Only **UNISPOOL** delivers instant status of all print resources with complete change control. Manage the number of copies to print, spoolfile status and device configurations — all from your Windows PC for...

- MPE
- HP-UX
- Domain
- AIX
- Ultrix/VMS
- SCO-UNIX
- LAN Mgr OS/2
- Novell

With standard features like...

- ✓ Unlimited print devices
- ✓ Bi-directional transfer to PC's
- ✓ Bi-directional transfer from hosts and PC Servers
- ✓ LAN and terminal server printer support
- ✓ Enhanced spoolfile selection criteria
- ✓ Automatic archiving based on spoolfile criteria
- ✓ Preview & print spoolfile selections
- ✓ Automatically route spoolfiles
- ✓ Automatic load share among printers

and much more...

CALL FOR A FREE DEMO TODAY!



U.S. Holland House
P. O. Box 91027
Austin, TX 78709-1027
P: (512) 280-4391
F: (512) 280-0309

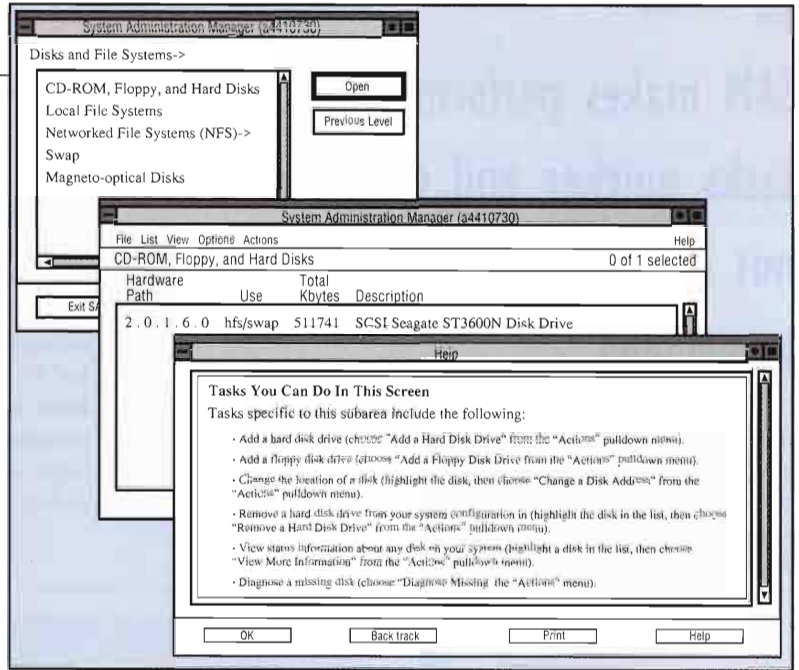
Holland House B.V.
Molenkampsweg 1
P. O. Box 3000
5306 ZX BRAKEL, Netherlands
P: +31 (4187) 3000
F: +31 (4187) 3060

FIGURE 2

administrators who have knowledge in the following areas have their installations under control and can address new projects with confidence:

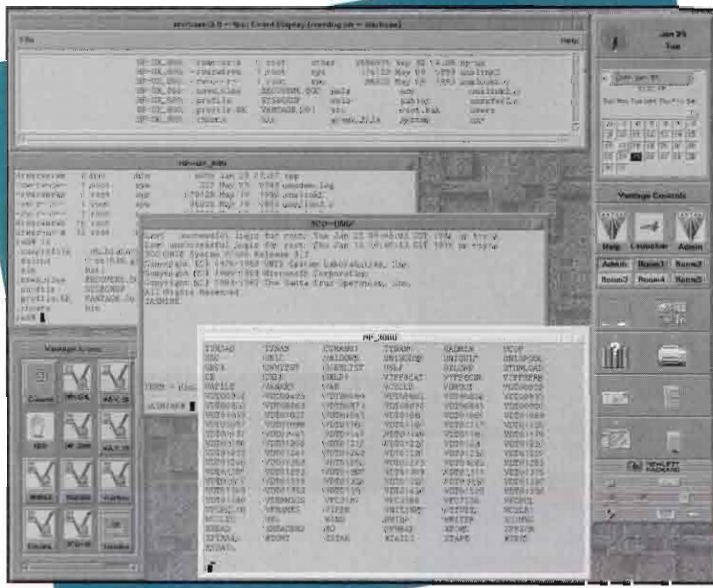
HP-UX system set-up — Setting up a system is usually a one-time deal. During this process you'll be exposed to configuring hardware, loading HP-UX and other software, configuring peripherals, setting up networking files and developing the backup scheme. Even if HP is performing much of the set-up for you, be sure to participate in the process as much as possible. *Figure 3* details the steps required to set-up an HP-UX system.

In addition to the system set-up steps, *Figure 3* lists some recommended HP training courses. The courses required to perform HP-UX system administration vary, but all are useful. Some system administrators like to take all training courses before working on the system, others like to spread out the training. Remember, it is always possible to refer back to the training material to refresh your memory.



Use of SAM — SAM is good for many activities, but as stated earlier, understand how to manually perform the tasks SAM is handling before letting SAM make the changes to the system.

Vantage — Distributed Network Management Made Simple



- Automation
- Remote Access
- Real-time Remote Control
- Enterprise-wide Job Streams
- Automated Software Distribution and much more for ...
- UNIX Systems
- Proprietary Systems
- Servers
- Communications Devices and many more, all from your ...
- Palm Top
- Personal Computer
- Workstation

Vantage - all this and more.

1-800-5 API USA



International
Simply Automation

API International
P. O. Box 91027
Austin, TX 78709

CIRCLE 286 ON READER CARD



SAM makes performing routine tasks quicker and easier; it is not a substitute for HP-UX knowledge.

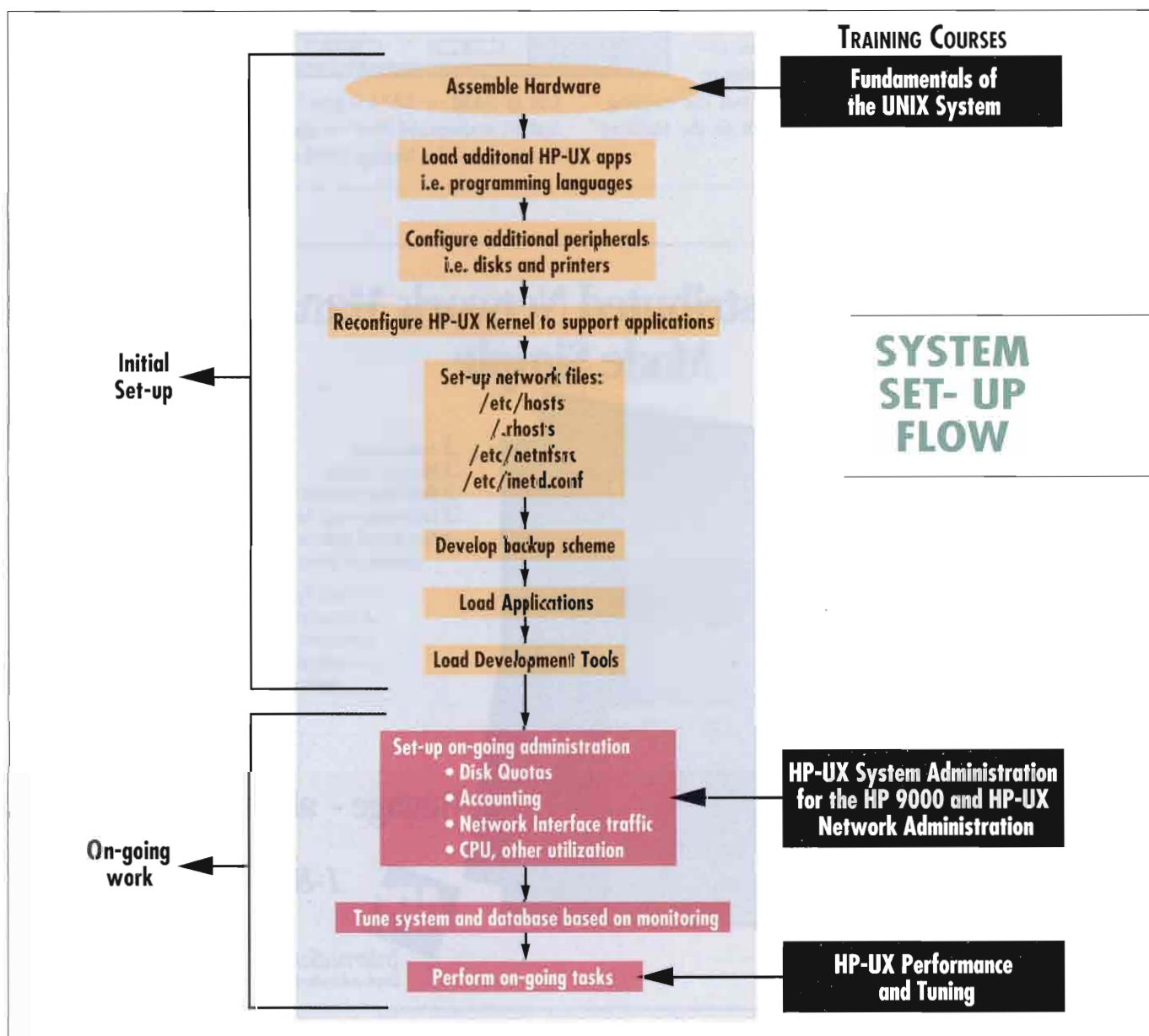
Training courses help by explaining the procedure for manually performing a task and later the way in which SAM is used to perform the same task.

Use of system resources — An administrator should understand the system's profile, including how much of your CPU, memory, disk and networking are being used at various times of the day. It also means understanding which applications and users are the "hogs" on your system.

Understand the user interface — Windowing environments are complex but you still need to have an understanding of them so you can make informed system management decisions. For example, HP VUE or X Window System software on the users' PCs will have a significant impact on your system.

How to write shell programs — Every system administrator eventually writes shell programs. With advanced tools such as SAM, and third-party products that help with sophisticated tasks such as job scheduling, it might seem that the high-level inter-

FIGURE 3



faces of these tools would obviate the need for writing custom shell programs. But nothing could be further from the truth.

It's not long before every system administrator finds some redundant task that could be performed in a fraction of the time with a shell program. It takes a little time and effort to become a proficient shell programmer, but with a good shell programming book and few examples to work from, most system administrators find this to be a skill well worth mastering.


Gaining knowledge in all these areas comes in many different ways. The first, is to participate in the set-up of the system. Or, at least know what has taken place if it is being done for you. Then, make whatever changes you need to make, such as adding a disk or changing the group that a user is in. This will build confidence in your HP-UX system administration skills.

The second way is through training with courses available through HP or third-parties. Although it may be difficult to get out of the office, training will give you the confidence you need when you have to make necessary changes to your system. —Marty Poniatowski is a technical consultant for Hewlett-Packard in Stamford, Conn. He is the author of "The HP-UX System

Every system administrator finds some task that could be performed in less time with a shell program.

Administrator's 'HOW TO' Book" (ISBN 0-13-099821-4) published by Prentice Hall PTR and distributed by CBM Books, a division of Cardinal Business Media, Inc. For ordering information, contact CBM Books at (215) 957-4265.

Would you like to continue to see articles on this topic?
Circle on reader card
yes 348 no 347



The "HOW TO" book for all HP-UX system administrators and users
At last — a systematic and comprehensive guide for setting up and maintaining HP-UX systems.

- ◆ Set up your HP-UX System with easy-to-follow flowcharts.
- ◆ Use your System Administration Manager (SAM) to add and delete users, perform backups, view the status of disk space and more!
- ◆ Customize your HP VUE
- ◆ Learn Shell programming
- ◆ Includes numerous examples reflecting the many and varied tasks you perform on HP-UX systems.
- ◆ Written by HP-UX technical consultant Marty Poniatowski, who also serves as a contributing editor for *HP Professional*.

ORDER FORM **ORDER BY PHONE: (215) 957-4265 OR BY FAX: (215) 957-1050**

Send me _____ copy (ies) of The HP-UX System Administrator's "How To" Book at \$32.00 each, plus UPS shipping.*
 (* PA residents add 6% sales tax.)

Check enclosed for \$ _____
 (Checks payable to Cardinal Business Media, Inc.)

Charge to:
 VISA MasterCard American Express

Account Number _____
 Expiration Date _____ Date _____


Signature _____

Name _____
 Title _____
 Company _____
 Address _____
(Street address required)
 City _____ State _____
 Zip _____ Country _____
 Phone (____) _____ FAX (____) _____

*** UPS Shipping:** In the U.S., \$4 for the first book, \$1 for each additional book. Outside the U.S., please call (215) 957-4265 for shipping information.

Distributed for PTR Prentice Hall by CBM Books.

Mail to: CBM Books
 101 Witmer Road
 P.O. Box 446
 Horsham, PA 19044

HPPIH1293


CIRCLE 425 ON READER CARD

**THE
TOTAL
SOLUTION**

sales, service, support

- ◀ On-time service, on-line equipment—backed by the GE name.
- Black River takes the risk and worry out of ordering, implementation and maintenance. You're assured:
- Full line of new and previously owned, refurbished 9000, 3000 and 1000.
- Technically trained maintenance team.
- Free installation with GE maintenance package.
- Nationwide service backed by GE.

Call 216-365-9950 or fax 216-365-3916 for more information.



GE Computer Service



BLACK RIVER
 COMPUTERS

THE TOTAL SOLUTION
sales, service, support

7630 RACE ROAD • NORTH RIDGEVILLE, OHIO 44039
 216-365-9950

CIRCLE 171 ON READER CARD

RISC Management

HP Hewlett-Packard saw the benefits of RISC CPU architectures

long before it became evident to its competitors in the computer business. RISC architectures, of course, follow the premise that a central processor with a small number of highly optimized instructions is more efficient than a traditional CISC processor-based system. In 1988, HP bet its future on its RISC processor family, known as Precision Architecture (PA).

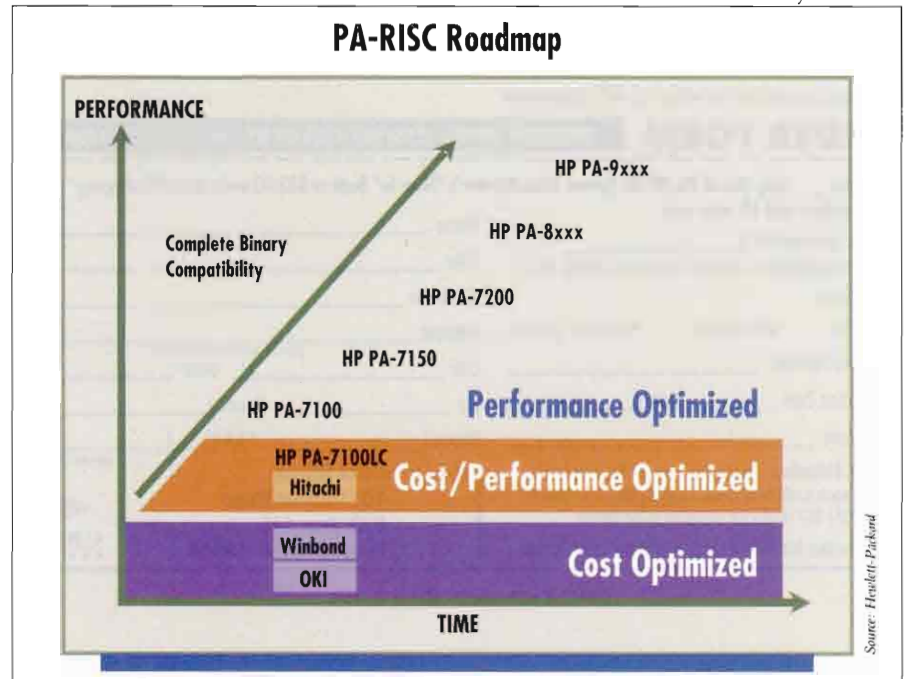
HP-PA 1.0 was the original architecture for the first HP 9000 Series 800

systems. But in 1990, with the introduction of the HP 9000 Series 700 workstations, HP implemented HP-PA 1.1 on the PA7100 CPU. Shortly thereafter, HP put the same combination into the HP 9000 Series 800 systems — the 8x7 product line. Since then, all new HP systems that have been introduced use the HP-PA 1.1/PA7100 architecture now better known as PA-RISC.

Besides a few enhancements in integer arithmetic, PA-RISC 1.1 includes:

- 16 additional floating-point registers
- the ability to address each double-precision floating-point register as two single-precision registers
- some new floating-point operations which greatly improves floating point calculations.

Because all PA-RISC 1.1 systems are



backwards-compatible with PA-RISC 1.0, all programs compiled on a system that uses PA-RISC 1.0 will execute without change on a PA-RISC 1.1 system.

If you compile a program on an HP 9000 Series 700 machine, the compiler will generate PA-RISC 1.1 code by default, and the executable will run only on a PA-RISC 1.1 system. The first HP 9000 Series 800 systems will generate PA-RISC 1.0 code, but you can use the resulting executables on any PA-RISC system.

If you are developing on a PA-RISC 1.1 system, you can still force the compiler to generate PA-RISC 1.0 code using the +DA compiler option. However, you need to be sure that you do not link any object libraries that were compiled for PA-RISC 1.1. If any module in a program is compiled for PA-RISC 1.1, the entire program is marked as a PA-RISC 1.1 program. Use the "file" command to discover if you have successfully compiled an HP-PA 1.0 executable.

Fortunately, most system archive libraries that HP ships are compiled for HP-

PA 1.0; although math libraries are shipped in both versions. **Note:** the new version, found in /lib/pa1.1, has entry points that aren't available in earlier versions.

When compiling software for compatibility across platforms, the operating system version is critical. So, when you compile your code on a PA-RISC 1.1 system, and use the +DA 1.0 flag, your software will run on PA-RISC 1.0 or 1.1 systems running the same or later version of HP-UX. For example, if you compile code on HP-UX 8.0, you can expect the code to run on HP-PA system running HP-UX 8.0 or HP-UX 9.0; however, it *won't run* on an HP-UX 7.0 system.

You can use the +DS scheduling option without affecting the compatibility of your object code. This option only affects how the compiler optimizer schedules instructions which have long execution latencies, so it is probably to your advantage to schedule the code for the fastest machine, even if you are generating HP-PA 1.0 code.

What does all of this mean? Well, if

you are developing code that must run on a number of different HP systems, it means you should use the +DA 1.0 compiler flag, and use a version of HP-UX that is the same release or older than your customers will have. This may force you to stick with HP-UX 8.0, but it will let your customers and prospects use your code no matter what system you use as your development environment.

PA-RISC continues to evolve as evidenced by the new PA7100LC CPU introduced in December 1993. The 7100LC CPU maintains full PA-RISC 1.1 functionality while adding 48 bit addressing, little endian capability, uncacheable memory pages and multimedia support. While it was far from a sure thing when HP started, PA-RISC has proved to be reliable, flexible and scalable.

— Kehoe's Internet address:
kehoe@cardinal.com

Would you like to continue to see articles on this topic?
Circle on reader card
yes 306 no 305

EXPERIENCE.

We have provided the HP community with bold solutions for a quarter of a century.

Today, organizations nationwide turn to us for new HP 3000 hardware, refurbished hardware, outsourcing, and disaster recovery services.

Give us a call at 201-672-6000 for the latest information on our products and services for HP users.



Computer Solutions, Inc.

CIRCLE 167 ON READER CARD

LEADING THE FIELD



That's right, as a leading HP/Apollo reseller, we're ahead of just about everybody in pricing, delivery and inventory.

We have it all, from HP 400 & 700 series through Apollo DN3000 to DN10000. Call us for systems, spares, 3rd party upgrades and peripherals.

For our overseas customers a complete export service is available.

S.A.R. INCORPORATED

11 Rogers Road, Box 8161 Haverhill, MA 01835
Telephone (508) 521-6656 Fax (508) 372-0999

CIRCLE 131 ON READER CARD

Playing Peek-A-Boo With E-mail

Technology advances can bridge oceans of business demands,

however, the moral and legal implications of such advances can leave you in a quagmire that takes years to cross. Take E-mail and workplace privacy, for example. This concerns not only your company management, but should concern you as a system mail administrator.

For example, several years ago a mail administrator for a major computer vendor was apparently fired for protesting the actions of a manager who was reading and copying employee E-mail. That was after assuring over 700 employees of their E-mail privacy based on assurances she had received from management. The company claimed the mail administrator was fired for insubordination.

A class-action suit was also filed on behalf of all those employees whose mail was read. The case was filed under a California State statute that prohibits the interception of any electronic communications without the consent of all parties. The judge accepted the defendants arguments that the law did not cover electronic mail or the workplace. The case is currently being appealed.

The basis for bringing this case to court stemmed from the perception that E-mail is entitled to the same legal and ethical standards that govern the United States Postal System. A user expects that everything he writes and sends will remain

private. But is that a reasonable expectation given current technology, legal statutes and the business needs of a corporation?

The Electronic Communications Privacy Act of 1986 was enacted to prohibit computer eavesdropping; excepting cases in which the authorities can prove that a crime may be occurring. This law, however, only protects the communications between companies. Internal corporate E-mail is currently regarded in the courts as commercial communication. According to Walter Ulrich, a director at the Arthur D. Little consulting firm and an E-mail issue specialist, this is a category to which the First Amendment rights of free speech do not extend. This gives corporations every right to view the files on a hard disk and every E-mail message that passes through its system. But, is this an ethical practice?

Management assumes the right to view any information stored in the office computer systems. They purchased the equipment, trained the users and they pay the communications costs. They have a right to make sure that the equipment is being used for legitimate business purposes. You should understand that in the case of your absence, your supervisor or even a co-worker may need, and get, access to your files or mail messages in order to carry out the daily business.

As an employee, however, you appreciate the privacy of your own work. You don't want others interfering with it. As long as you are doing your job satisfactorily, everyone should leave you alone. You also may have used the computer for some non-business function, preparing your income taxes or exchanging personal

messages with someone in the next building.

As an E-mail system administrator, you have other concerns. On occasion, messages get stuck in gateways, and they require someone to push them on their way. There are times you may see the contents of private messages. You also need to control the amount of disk space used by E-mail on the network. How do you purge the old messages users leave in their mail directories? Backups store mail messages off-line for months and can be used for evidence in legal proceedings. How do you do your job without creating ethical problems, yet still provide the users with the service they require? What do you do if someone is reading another user's E-mail for business reasons, or sending inappropriate messages through the network?

The answer to all these questions are not found in technology, but rather in administrative policy. A policy created by

Find out how paper records and files are treated, and apply those policies to their electronic counterparts.

management, human resources, legal counsel and users should be developed on the subject of workplace privacy. While this column is focusing on E-mail and disk files, you also need to cover paper and telephone privacy issues at the same time.

Of the companies responding to a recent ZiffNet survey, over 76 percent did not have or were unaware of any policies regarding privacy in the workplace. Areas covered by those who had policies included: monitoring and reading of E-mail; monitoring and listening to telephone calls; monitoring of voicemail; access to files on employees hard disks; monitoring keystrokes; and monitoring

user activity on the network. In today's world, this majority is not the one to be in.

Establishing a policy should be fairly simple to accomplish. William Morony, executive director of the Electronic Mail Association (EMA; Arlington, Va.), states that establishing a policy is not rocket science. He suggests figuring out how paper records and files are treated, and then applying the same policies to their electronic counterparts. Privacy policies should cover all areas including the following: computer files, E-mail, voicemail and telephone usage. Make it simple to understand. Common sense and courtesy makes the best guidelines.

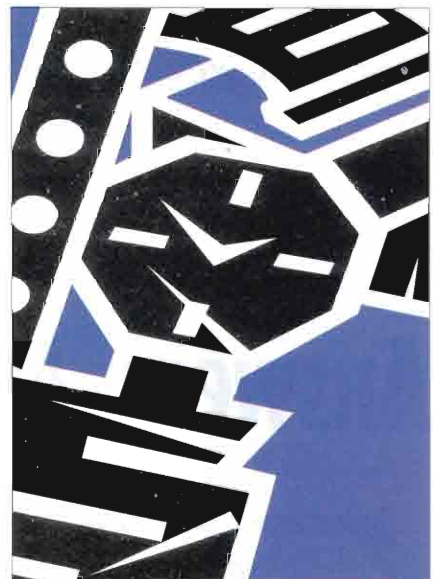
A good policy establishes trust between employees and management, and sets employee expectations. Employees need to understand that E-mail is not completely private — mail administrators may see their message in the course of keeping the mail system running. It also should be understood that mail is transmitted in clear text. While it is unlikely anyone would actually read it, the possibility exists. A good policy assures the employees that management or other employees will not be getting into their communications without a business need. Such policies also provide guidance to you as mail administrator in the duties you need to perform to keep the system running.

To help companies establish policies on workplace privacy, EMA offers a *Tool Kit for Formulating Your Company Policy*. The *Tool Kit* is available for \$40 to non-members and \$20 to EMA members.

Another organization that is helping define the legal morass of cyberspace is the Electronic Frontier Foundation (EFF). The EFF was started by Mitchell Kapor, founder of Lotus Development Corp., and Grateful Dead lyricist John Perry Barlow to support those using computers and computer networks. They are in the business of making sure electronic communications are not unduly restricted due to the public's fear of the unknown.

—Cahoon's Internet address:
cahoon@cardinal.com

Would you like to continue to see articles on this topic?
Circle on reader card
yes 306 no 307



The Power of Efficiency

EDI WINDOWS™
Enabling technology for business in the '90s

Successful businesses across North America know that Electronic Data Interchange (EDI) is bringing true automated efficiency to a host of everyday tasks formerly done by hand. **EDI WINDOWS** enables the link from your HP3000, HP9000 and other open system platforms, to those all-important customers and suppliers, for purchase orders, quotations, invoices and much more.

EDI WINDOWS supports X12, EDIFACT, TDCC Standards and many more. In the electronic marketplace, **EDI WINDOWS** can work for you.

For powerful solutions, call 1-800-ANSWERS

M. B. Foster Associates Limited
50 Water Street
P.O. Box 580
Chesterville, Ontario
Canada K0C 1H0
Tel (613) 448-2333
Fax (613) 448-2588



Your Integration Software Supplier

EDI WINDOWS is a trademark of Trinary Systems Inc.

CIRCLE 155 ON READER CARD

Answers At The Speed Of Light

This is about a tool that has been receiving far too little attention.

In today's rapidly changing computing environment, HP LaserROM/PC is essential for system managers, developers and programmers working with HP 3000 systems.

HP LaserROM/PC, when combined with HP documentation on CD-ROM, is a powerful yet intuitive tool for managing HP 3000 systems. Its browse and keyword search capabilities provide the information you need, when you need it. HP LaserROM/PC B.00.00, released in late 1993, has a completely redesigned interface. It has a new customized bookshelf feature allowing you to group frequently used manuals and new navigational tools including tables of contents, hyperlinks and indexes.

According to Steve Stukenborg, product manager with the Software Services and Technology Division at HP, only about 25 percent of MPE/iX systems on support contract are receiving documentation on CD-ROM. This percentage should be much higher.

HP documentation on CD-ROM is less expensive, more timely, more complete and takes up dramatically less space than traditional paper documentation. One CD-ROM disc holds the entire MPE/V or MPE/iX document set, including manuals, software status bulletins,

application notes, product catalogs, solutions catalogs and Communicators. No more need to bother with paper manual updates and the hassle of interleaving new and revised pages into your binders because each disc is a complete replacement for the previous disc. When you get a new disc, just toss the old one into the trash.

Manuals are referred to as "books" and bulletins and notes are referred to as "documents" by HP LaserROM/PC. There are some differences in the way books and documents are handled, but the important thing to note is that HP LaserROM/PC is a full-text keyword retrieval system. Every significant word in a book or document is indexed for rapid retrieval.

HP LaserROM/PC's search facility handles everything from simple keyword retrieval to complex boolean combinations, keyword proximity, thesaurus equivalents, wildcard keyword expansion and publication date ranges. For example, the search criteria: **"byte array"** and **"bounds violation"** will find all instances where the phrases "byte array" and "bounds violation" appear in the text within 100 characters of each other.

IN SEARCH OF

I recently had several opportunities to test out the search capabilities of HP LaserROM/PC. One of my duties involves maintaining a large number of SPL programs from the late '70s and early '80s. I/O is handled with direct calls to system intrinsics such as FREAD and FWRITE. The syntax of these intrinsics specifies logical arrays for the target strings. If, instead, you pass a byte array, SPL issues a warning message during the compile,

“arithmetic right shift emitted” and converts the address by shifting it one bit to the right. The tendency is to ignore the warning and, in the vast majority of cases, the compiled program will run just fine. This is what the author of these SPL programs chose: ignore the warning.

The warning does not tell you, however, that if the data stack expands beyond 16K and the byte array falls above the 16K point (as could easily happen with a byte array local to a procedure), the one bit shift can cause the wrong half bank of memory to be addressed, possibly resulting in the process aborting with a bounds violation. I’ve known about this idiosyncrasy for many years but didn’t know if or where it was documented.

Recently, after enhancing one of these old programs, it failed with a bounds violation in a section of code not involved in the enhancement. After tracking down the location of the bounds violation to an FREAD with one of those “arithmetic right shift” warnings, I suspected this might be an example of the address conversion problem. Sure enough, it was.

However, I wondered if this was documented anywhere and what I would have done if I had not already known the answer. I called up HP LaserROM/PC with the MPE/V disc loaded and executed a search on all documentation (manuals, SSB, etc.) for the combination of “byte array” and “bounds violation.” In less than two minutes, it found three occurrences. The first (in the Syntax section of the MPE/V Intrinsics manual) described the exact problem. I doubt I would have found this without HP LaserROM/PC.

Another example involved a question from a friend about how to call the CREATEPROCESS intrinsic from a COBOL program; in particular, how to pass the address of a COBOL variable to CREATEPROCESS. My friend thought it might be necessary to write a subprogram in some other language that could handle addresses to actually make the intrinsic call. Though I try to avoid COBOL, I assured him that there was now a way to directly pass an address to an intrinsic from COBOL – I just couldn’t remember it. I cranked up HP LaserROM/PC and after a few false starts while I tried to come up with the right

search criteria, I found the answer and was able to direct my friend to the exact section in the appropriate manual.

EXPERIENCE COUNTS

HP LaserROM/PC is not a substitute for experience. To use it properly, you need to know enough to construct a search request that is sufficiently precise to qualify

a manageable number of occurrences yet broad enough to qualify the information you are looking for. HP LaserROM/PC can make use of a thesaurus to handle common variations on a token, but experience is still an essential ingredient for a successful search.

The minimum requirements for the HP LaserROM/PC version B.00.00 are

HP9122C HP9153C Replacements

ISA Floppy Disk Family



<p>ISA 1015 (HP9122C Compatible) 3.5 inch dual HP-IB SS/80</p> <p>ISA 2025 (HP9153C Compatible) 40MB with 3.5 inch single HP-IB CS/80 SS/80</p> <p>ISA 1060 5.25 inch single HP-IB SS/80</p>	<p>ISA 1015S (NEW SCSI) 3.5 inch single (HP internal FD compatible) SCSI-for HP9000 300/400/ 700/800</p> <p>ISA 1060S (NEW SCSI) 5.25 inch single SCSI-for HP9000 300/400/ 700/800</p>
---	--

- Memory Card
- I/F Card
- Floppy
- Hard Disk
- MO Disk
- QIC Tape
- DAT

ISA, the Largest HP Enhancements Manufacturer

HEAD OFFICE: ISA CO., LTD. Japan: 1-1-5 Sekiguchi, Bunkyo-Ku, Tokyo 112 Japan
Tel: 03-5261-1160 Fax: 03-5261-1165

USA: Texas ISA, Inc.	Tel: 713-493-9925	Fax: 713-493-2724
S.E. ASIA: ISAHK CO., LTD.	Tel: 330-1977	Fax: 330-1077
EUROPE: EURISA SARL	Tel: 1-48-61-48-95	Fax: 1-48-61-49-06



CIRCLE 245 ON READER CARD

Microsoft Windows 3.1 on top of MS-DOS 5.0 running on a 386 PC with 4 MB of RAM, a VGA monitor, 4 MB of available hard disk storage, a mouse and any ISO 9660-compatible CD-ROM drive. I used a 386SX machine with 5 MB of RAM, a Panasonic double-speed CD-ROM drive and a bus mouse. Except for graphics images, performance was excellent.

HP LaserROM/PC does have a couple of shortcomings. Heading the list is the way it counts matches. In my first example, the search criteria was "byte array" and "bounds violation." I would call a single instance of the two phrases appearing within the configured proximity (default 100 characters), one match. Instead, HP LaserROM/PC reports it as four matches. This makes no sense.

The promotional brochure says "printing is a snap," which is correct — to a point. It only takes a small amount of mouse movement to send text to a printer;

however, it is another story entirely to get the print to fit properly on a page if you don't have an HP LaserJet printer. While you have a choice of fonts for the screen, the choice is not carried over for printing.

Finally, the lack of horizontal scrolling in the search scope and results windows is a nuisance. For example, if the search scope includes the Communicators, the results window will display the titles of the articles. It is often difficult to determine the topic of an article from just the first few words. You can open up a document to determine if it is relevant or you can resize the window to display more of the title; however, HP LaserROM/PC does not remember your window size preferences for later sessions once you exit.

ADDING IT ALL UP

What does it all cost? Assuming you already have an adequate PC with Windows 3.1, expect to pay around \$300 for a CD-ROM drive and interface card

(more to have it installed, but probably worth it unless you love frustration). A single-user version of HP LaserROM/PC costs \$275 (\$695 for an additional 8-user license). The CD-ROM subscription service is \$46 per month if you already have a support contract and \$95 per month otherwise.

Even with its faults, HP LaserROM/PC still saves trees, shelf space and makes the job of system management much easier. With Release 5.0 of MPE/iX, it gets even better, because a system CD-ROM drive can be used for the dual functions of software updates and documentation access via HP LaserROM/PC. Now, if we could just get all HP 3000 publications on CD-ROM ...

Burke's Internet address:
burke@cardinal.com

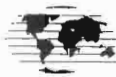
Would you like to continue to see articles on this topic?
Circle on reader card
yes 304 no 303

HERE'S YOUR SOLUTION!

Quality products at affordable prices for
HEWLETT-PACKARD/APOLLO®

Workstations,
Peripherals and Upgrades

- NEW and REFURBISHED
- Repairs
- 100% Customer Satisfaction
- Free Technical Support
- Immediate Delivery



CMI

Computer Marketing International, Inc.™

85 Flagship Drive
No. Andover, MA 01845 USA

Tel: 800-497-4264
508-687-3700

Fax: 508-689-2031
Int'l. Fax: 508-687-4395

CIRCLE 454 ON READER CARD

Fax on Demand

Get the information you want from participating vendors in a matter of minutes!
It's easy and it won't cost you a thing.

Use your touch-tone phone to call the HP Professional Fax on Demand Service today. You'll be asked to key in the code number found in the advertisement that interests you. Continue by following the simple voice menu. In most cases, you'll receive the information you want within minutes.

Call 1-800-925-1786 to receive the latest information* today!

*Information is available from participating vendors.

HP Professional

Mitch Schwartz guarantees R Squared builds the best H.P. RAID. Make him prove it.



Mitch Schwartz,
VP/Sales & Marketing

Mitch Schwartz has spent the last seven years at R Squared developing ways to keep your UNIX workstations on the leading edge of technology.

Mitch's latest accomplishment is helping R Squared develop the ULTIMA™ RAID. Mitch guarantees this is the most bulletproof RAID you can buy because it has the best testing, engineering and design. He's sure you'll agree after you stack it up against the competition.

Whether it's additional RAM or an advanced storage subsystem, R Squared should be your first call. For backing up large disk farms nothing matches our Metrum 2150. Put 18 GB on a single tape at a cost of less than one-tenth of a cent per MB. And it's fast too, with sustained transfer rates

of 2 MB per second. R Squared also offers fast wide disk drive arrays that will transfer up to 20 MB per second.

R Squared supports all the leading UNIX workstation platforms including: Sun; Hewlett-Packard; Digital; Silicon Graphics; and IBM. We can assist you with everything from upgrading your system's memory to installing a complete network. Our technical staff provides support, maintenance and installation. We also have a complete systems integration team that can develop high performance, turnkey solutions. And every product we ship meets R Squared's performance and dependability standards. Mitch Schwartz won't have it any other way. **(800) 777-3478**



The Right People, Products and Performance.

11211 East Arapahoe Road, Englewood, CO 80112-9947
FAX: (303) 799-9297 e mail: inquire @r2.com

new Products

SOFTWARE

Informatica Announces RightSmart Toolkit

Informatica Corp. announced the availability of RightSmart, a Microsoft Windows-based toolkit that accelerates the migration of data in legacy systems to distributed client-server environments.

RightSmart automates tasks usually performed manually, allowing IS departments to focus on higher-level design and development issues.

It consists of three components: COBOL Analyzer, which captures information about data definitions from the source code of an application; Database Designer, which allows users to modify data definitions graphically, and automatically creates relational database tables; and Data Loader, which loads existing data by mapping legacy data structures to the relational database tables.

RightSmart analyzes ANSI 74, ANSI 85 and the Micro Focus and IBM mainframe versions of COBOL. It works with RDBMSs from Oracle, Gupta and Sybase, and other databases that support Microsoft's Open Database Connectivity (ODBC) Interface.

Price is \$3,495 for a single-user license. Contact Informatica Corp., 11925 Wilshire Blvd., Third Floor, Los Angeles, CA 90025; (310) 479-4601.

Circle 376 on reader card

Comtec Automated Adds NetWorker For HP 9000

Comtec Automated Solutions (CAS) added the NetWorker version for HP to its backup software product line. NetWorker supports both tape and optical storage as backup media.

This software is combined by CAS with a variety of tape and optical hardware, along with pre-sales consulting, installation, post-sales training and on-going technical support. NetWorker software allows users to backup across a heterogeneous mix of workstations. NetWorker uses a client-server architecture

to provide network-wide backup and recovery capabilities. Heterogeneous clients are easily added to the NetWorker server without changes to the server software. Modifications made to the server are transparent to the clients.

Contact CAS, 10,000 Old Katy Rd., Ste. 150, Houston, TX 77055; (713) 935-3666.

Circle 374 on reader card

TEAMWORK Releases Motif Made Simple V1.0

TEAMWORK Software Solutions released Motif Made Simple Version 1.0 (MMS). MMS lets software developers generate Motif X window system forms-based applications without the use of complex Motif and X window programming concepts and libraries.

MMS is a library of C program routines that shorten development cycles by allowing developers to focus on the solution to a problem and avoid prolonged X window training and development. Using MMS, a programmer with basic C programming skills and basic experience with a windowing environment (X, Windows, Macintosh) can develop sophisticated X window applications with minimal effort.

MMS is available in object library and source code for the HP 9000 and Sun SPARC platforms. Prices vary with the type of licensing option.

Contact TEAMWORK Software Solutions, 572 E. 126th Terrace, Ste. 1B, Olathe, KS 66061; (913) 829-5128.

Circle 372 on reader card

SCH Offers Scalability For HP OpenView

Software Clearing House (SCH) announced that Version 1.20 of OS/EYE*NODE will provide significant scalability and distribution for HP OpenView, IBM NetView 6000 and DEC PolyCenter NetView. OS/EYE*NODE from Digital Analysis Corp. (DAC) will be ported to HP, Sun, IBM, DEC and DG systems.

OS/EYE*NODE achieves scalability through distributed domain-level managers called Network Slate*Machines (NSM) and numerous specialized resource managers called proxies. Each NSM can autonomously detect faults, take remedial action and notify one or more remote OpenView consoles. NSMs can manage one or more domains consisting of 20 to 2,000 SNMP or CMIP manageable resources. NSMs also can be incrementally deployed to scale from a single NSM to thousands of NSMs, addressing management capacities of hundreds of thousands of devices or resources over an arbitrarily broad geographical area.

Distribution is achieved via a distributed domain-based hierarchical map called Domain*View and Node*View. OS/EYE*NODE is a standards-based solution that is hardware, software and database independent.

Contact SCH, 3 Centennial Plaza, 895 Central Ave., Cincinnati, OH 45202; (513) 579-0455.

Circle 400 on reader card

Abacus Data Systems Unveils Version 6.4

Abacus Data Systems Inc. released version 6.4 of its ADAMS 4GL software. With an emphasis on customer service, the basic solutions are integrated to improve the management of sale order processing, inventory, purchasing and accounting.

ADAMS 4GL is a highly comprehensive business management system that can handle the needs of large and small operations. Some of the customer service features include the ability to cross and up sell, add complimentary items, order by customers' part numbers, order from customer history and reserve inventory for a customer. Other highlights include pricing by customer, online order entry, powerful search and inquiry capabilities, and extensive customer default setups.

ADAMS 4GL is written in Progress in a

relational database system and runs on HP 9000 Series 800 systems.

Contact Abacus Data Systems, 3601 Algonquin Rd., Rolling Meadows, IL 60008; (708) 632-0303.

Circle 399 on reader card

Kearny Systems Expands Barware Software Line

Kearny Systems Inc. (KSI) announced that it has expanded its line of Barware software products to operate on HP and DEC OSF UNIX platforms, using Oracle as the database management program.

KSI also has formed a strategic partnership with Vertex Industries to integrate Barware products with Vertex's Bridge.Net software for data collection. Bridge.Net is an advanced data collection management system which can operate in UNIX, DOS and AS/400 environments.

KSI released its Electronic WAREhouse Locator System (EWARE LS). The EWARE LS program provides total automation to warehouses, distribution centers and industrial facilities. EWARE LS also provides a real-time, LAN-based solution to receiving, put-away, storage, product movement, picking, verification, shipping and freight problems through radio frequency (RF) transactions. The EWARE LS program may be interfaced directly to an existing host computer, or may be used as a standalone, independent network. An optional EDI module provides integration into an existing EDI program or can provide a total EDI program within EWARE LS. Contact Kearny Systems Inc., 604 Courtland St., Ste. 180, Orlando, FL 32804; (407) 740-5220.

Circle 397 on reader card

Leading Technology Releases Metrica 4.0

Leading Technology Inc. (LTI) released Metrica Version 4.0. Metrica is an engineering toolkit with unified data management, analysis and visualization functionality. Metrica is used by engineers in data-intensive environments in aerospace, automotive, telecommunications, semiconductor and defense industries.

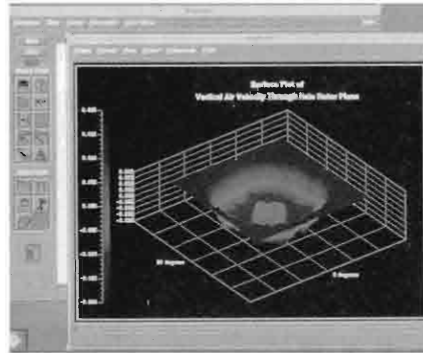
Release 4.0 provides features to store, manipulate and graph large volumes of engineering data from specialized test and measurement applications.

Database server enhancements include BLOB support, multidimensional array support and performance improvement. Visualization enhancements include new engineering graphs and there are also configurable GUI tools.

Metrica 4.0 is available on HP, Sun, DEC Ultrix, IBM and Silicon Graphics workstations. Pricing starts at \$6,126 per seat for a 4-user system.

Contact Leading Technology Inc., 6 New England Executive Park, Ste. 400, Burlington, MA 02803; (617) 229-8686.

Circle 396 on reader card



Metrica 4.0 is accessible through an intuitive GUI.

Cincom Announces XpertRule Version 2.1

Cincom Systems Inc. announced the availability of XpertRule Version 2.1 with enhanced graphical knowledge capture capabilities, refined source code generators and new forms-based end-user facilities.

XpertRule is a Microsoft Windows-based knowledge specification and application generation system that allows users to quickly develop, prototype and refine applications requiring complex decision processes. It automates knowledge capture using learning-by-example techniques, and represents it graphically as pattern rules, decisions and exception trees, and truth tables.

XpertRule can run standalone on a PC, and also generates program source code in COBOL, C, Pascal and MANTIS for development to other systems. XpertRule MANTIS applications are fully portable and can be deployed to a number of systems including HP, IBM MVS, VSE and VM, Sun, SCO and other UNIX systems, DEC Open VMS and OSF/1, DOS and OS/2.

XpertRule on Windows cost \$990. Contact Cincom Systems Inc., 2300 Montana Ave, Cincinnati, OH 45211-3899; (513) 662-2300.

Circle 394 on reader card

RAC Consulting Adds ESPUL-PRINTPATH Family

RAC Consulting announced additions to its ESPUL-PRINTPATH family of HP 3000-based network printing solutions.

PRINTPATH/NLM is an HP 3000-to-Novell print gateway that runs as a NetWare Loadable Module (NLM) on the Novell server. It spools HP 3000 print files to Novell print queues automatically. It also prints to and from UNIX systems via the LPD protocol, and prints from the Novell server to TCP/IP printer interface cards.

PRINTPATH/UNIX implements the UNIX Line Printer Daemon (LPD) remote printing protocol on the HP 3000. Using this product, the HP 3000 can send and receive print files as if it were another UNIX host.

PRINTPATH/SE is a standalone edition of the ESPUL-PRINTPATH family of network printing solutions for the HP 3000 that does not require the full ESPUL spoolfile management package from RAC.

Contact RAC Consulting, P.O. Box 10099, Olympia, WA 98502; (206) 357-9572.

Circle 390 on reader card

Root Group Inc. Develops PC-Rshell

The Root Group Inc. developed PC-Rshell, the missing link in PC networking. PC-Rshell creates a true peer-to-peer, multi-platform networking environment. Running on top of a TCP/IP network, PC-Rshell is a tool for distributed management that allows remote shells to be run on the PC. It enables a systems administrator to initiate incremental backups, software upgrades, virus scans and audits for software, hardware, memory and network configurations from the host on any platform on the network or arbitrary groups of PCs on the network.

Using PC-Rshell and its remote PC access allows execution of most DOS and Windows commands from anywhere on the network making PC files available to the entire network.

PC-Rshell's network security capabilities control access by defining any combination of parameters such as who, where, what and when. Total password protection protects against unauthorized changes to access control parameters.

PC-Rshell supports PC-NFS 4.0a and 5.0 and all other TCP/IP stacks that support Windows sockets DLL 1.1; UNIX platforms including HP-UX, Solaris 1.x, 2.x, DEC Ultrix, SCO UNIX and Intergraph CLIX; networks with 386 or 486 IBM PC or compatibles with 2 MB RAM, MS-DOS 5.0 or 6.0, Microsoft Windows 3.1 in 386 enhanced mode, one UNIX workstation and an Ethernet.

Contact The Root Group, 4700 Walnut St., Ste. 110, Boulder, CO 80301; (303) 447-3938.

Circle 389 on reader card

Reflection 1 For Windows Includes HP ANSI Emulation

Walker Richer & Quinn Inc. (WRQ) shipped Reflection 1 for Windows which features HP ANSI emulation.

Version 4.1, is for users who need VT emulation in an HP 3000 environment. The HP ANSI emulation (VT220, VT102, VT52) will enable users to run host applications such as UDM and Oracle.

For systems administrators, this version will offer the ability to limit user access to Reflection features. This will prevent users from changing the way Reflection is configured.

Other features include Windows Sockets-compatible Telnet; support for additional HP 700/94 terminal features; graphical interface for keyboard mapping; floating host keyboard; Zmodem support; and Reflection FTP.

Contact WRQ, 2815 Eastlake Ave., E., Seattle, WA 98102; (206) 726-7237.

Circle 388 on reader card

SES Generates C++ Code Frames

SES introduced SES/objectbench Frame Builder, a CASE tool that automates the task of creating syntactically correct C++ code frames.

By generating a set of C++ code frames directly from the Shlaer-Mellor OOA models, SES/objectbench Frame Builder eliminates the time-consuming task of implementing this phase of development process by hand.

Other SES/objectbench tools include a Graphical Modeler for building models, and an Animated Simulator for testing and verifying model execution.

The SES/objectbench family is available on HP-UX, Sun SPARC and IBM AIX workstations. Price of SES/objectbench Frame Builder is \$5,900.

Contact SES, 4301 Westbank Dr., Bldg. A, Austin, TX 78746-6564; (512) 328-5544.

Circle 387 on reader card

Hilco Handler Provides MMS Interface

Hilco Technologies' Dellenian client-server handler architecture supports the ISO MMS command language for Ethernet communications. This capability makes it easier for CIM software running on multiple HP 9000 RISC workstations to communicate with Allen-Bradley PLC-5s equipped with an Ethernet port. The Dellenian handler operates as part of Hilco's MONITROL/UX CIM application enabler software.

The MMS command language provides the protocol needed to send commands such as read/write and upload/download to a PLC-5 over IEEE 802.3 (Ethernet) and 802.4 (MAP).

The MMS handler allows a single workstation, or server, to act as the principal interface to PLCs in a network of multiple PLCs and RISC workstations.

Contact Hilco Technologies Inc., 3300 Rider Trail S., Ste. 300, Earth City, MO 63045; (314) 298-9100.

Circle 385 on reader card

Mitchell Humphrey & Co. Releases FMS II

Mitchell Humphrey & Co. released FMS II, the most recent version of its financial management systems software.

The full-featured, online, real-time family of accounting systems is portable across the HP 3000 and HP 9000 platforms, enabling

Introducing NETWORK PRINTING VIA NLM

NetPrint92

MiniSoft introduces the most efficient software solution on the market for directing HP3000 spoolfiles to network printers. NetPrint92 may be implemented as an NLM to append spoolfiles to Novell print queues, or operate as a background task on the HP3000 and transparently spool output to network print destinations.

- Spoolfiles and reports printed directly on TCP/IP linked printers.
- Supports all major LAN cards.
- Supports Novell, LAN Manager, Banyan and Unix.
- Bi-directional printing.
- Prices start at \$995.

MINISOFT



MiniSoft Inc.
312 Maple Street
Snohomish WA 98290
FAX 206/568-2923
800/682-0200

Banhofstrasse 46
CH-6048
Horw, Switzerland
+41/41.47.2320
FAX +41/41.47.3866

NetPrint92 is a registered trademark of MiniSoft Inc. All other trademarks are the property of their respective owners.

CIRCLE 472 ON READER CARD

Reader Information

This month's issue contains many advertisements for hardware and software products available for your HP systems. Your investment in these products today could mean a more lucrative future for your company. Use the information below to learn more about the advertisers' offerings, then use the reader information card to initiate your direct link to valuable information about these advertisers' products.

3COM CORPORATION

Maker of the industry-leading LANplex 6000 switching hub for client/server networking.
Call 1-800-NET-3Com.

ARTECON INC.

CIRCLE 242

Artecon is a leading systems integrator and manufacturer of value-added hardware and software products for the UNIX marketplace. Product lines include: Opticals, Removables, Backups, Storage and Accessories.
Call (800) USA-ARTE, FAX (619) 931-5527.

COMPUTER MARKETING INTERNATIONAL INC.

CIRCLE 454

Independent distributor of new and refurbished HP Apollo workstations and peripherals. We provide in-house technical support and depot repair services. We are committed to providing 100% customer satisfaction on every order.
Call 800-497-4CMI.

COMPUTER SOLUTIONS INC.

CIRCLE 167

Computer Solutions is an HP Channel Partner now in its 25th year of operation. Businesses include disaster recovery services, outsourcing, hardware sales, contract maintenance, depot repair and school software. Call (201) 672-6000, FAX (201) 672-8069.

CONCORDE TECHNOLOGIES

CIRCLE 232

Broad line of HP mass storage (disk, tape, optical) and RAM memory upgrades for HP, Apollo, DEC, SUN, RS/6000 and Silicon Graphics computers. Best prices, availability, warranty and support. Call 1-800-359-0282 for complete information and pricing.

GE RENTAL/LEASE

CIRCLE 464

GE Rental/Lease provides the benefits of short- and long-term rental and leasing of workstations, PCs, notebooks, accessories, and multimedia equipment from manufacturers like HP, Sun, Silicon Graphics, Tadpole and more! Save working capital on the latest technology with overnight, nationwide delivery and convenient toll-free ordering! We can provide customized equipment solutions like HP's SPARCstation 10 models 512MP, 402MP, 51, 40, 41, and SPARCserver 1000s. Call 1-800-GE-RENT'S.

HERSTAL AUTOMATION LTD.

CIRCLE 173

Reasonably priced data storage subsystems with performance in mind. Call (313) 548-2001.

IEM INC.

CIRCLE 122

IEM is the manufacturer of the largest line of HP third-party peripherals. IEM offers affordable solutions for the HP environment. IEM's product line includes 4mm tape drives and autoteaders, 8mm tape drives, autoteaders and carousels, QIC tape drives, optical drives (WORM, MOD, Multi-function and CD-ROM), fixed winchester drives, floppy disk drives, combination drives, and more. Most IEM products are available with either an HP-IB or SCSI interface for HP 1000, 3000 and 9000 computers. IEM also offers a number of unique software solutions, including an automated backup and archive program.
Call (303) 221-3005 or (800) 321-4671.

INFORMATION BUILDERS INC.

CIRCLE 247

4GL/DBMS for HP MPE XL and HP-UX systems offering application development, reporting and decision support. Supported on all major platforms. Call (212) 736-4433.

INFOTEK

CIRCLE 146

Infotek has been a leading supplier of enhancement products for HP Workstations since 1976. The Infotek product line includes memory upgrades, mass storage solutions, accelerator cards and instrumentation products. For more information or to speak with our professional staff about your workstation needs: Call (800) 828-0414.

KINGSTON TECHNOLOGY CORP.

CIRCLE 281

Kingston Technology designs and manufactures memory upgrades for PCs, laptops, workstations and laser printers. The Kingston product line also features mass storage subsystems and processor upgrades. Call (800) 835-2545, FAX (714) 435-2699.

M.B. FOSTER ASSOCIATES LTD.

CIRCLE 155

DataExpress the #1 End User Computing Environment and report writer. EDI Windows, translation software, Reflection and the Network Series. Call (800) ANSWERS, FAX (613) 448-2588.

MINISOFT INC.

CIRCLE 472

Minisoft 92 for DOS and Windows providing HP terminal emulation and LAN connectivity for just \$129.
Call (800) 682-0200.

NEWPORT DIGITAL CORP.

CIRCLE 246

Accelerator cards for HP 9000 Series 200 plus HP 310 and HP 320. Ten-fold performance improvement.
Call (714) 730-3644.

O'PIN SYSTEMS

CIRCLE 258

REVEAL from O'PIN Systems solves report distribution problems. Users go "paperless" and view reports directly from PCs or terminals. Saves time and fast payback too!
Call (800) 888-1804.

QUEST SOFTWARE

CIRCLE 268

The only complete HP 3000 solution for
1) High speed network file and database access.
2) IMAGE, KSAM and MPE file shadowing.
3) Low overhead and network spooling.
Call (714) 720-1434

R SQUARED

CIRCLE 471

Complete line of quality peripherals, including disk, tape and optical drives, connectivity and I/O devices, mass storage libraries. Call (714) 777-3478.

S.A.R. INCORPORATED

CIRCLE 131

S.A.R. Inc. is an independent distributor of HP Apollo workstations. We can supply spare parts, upgrades or custom configure systems. Call (508) 521-6656.

TEXAS ISA INC.

CIRCLE 245

Complete range of mass storage devices and their peripherals for HP 3000, 1000 and 9000 from ISA.
Call (713) 493-9925, FAX (713) 493-2924.

TRYONICS INC.

CIRCLE 477

Tryonics Inc. is a provider of quality remanufactured HP Apollo, Apollo Domain series workstations, spare parts, network and software consulting services.
Call (603) 427-6850.

UNISON-TYMLABS, INC.

CIRCLE 499

Unison-Tymlabs is a supplier of networked systems management solutions for both UNIX and MPE. Product areas include workload management, storage management, print automation and desktop integration.
Call (408) 245-3000

U.S. HOLLAND HOUSE/API

CIRCLE 286

- 1) Multivendor network printing solutions for proprietary OS's and UNIX on HP, Apollo, DEC, IBM, SCO, MS LAN Manager and Novell. Single point control of all network printing from Windows-based PC's with access to all printing devices in your network.
- 2) AutoPac automation products for consolidated control of local and remote systems. Exception management for applications, databases and system management. Simultaneous information access for multiple applications and databases anywhere in your network.
Call (800) 5API-USA, FAX (512) 288-4240.

VISION SOURCE

CIRCLE 270

Vision Source is a value-added national distributor of technologically sophisticated connectivity, X Server, and programming software, providing inside and outside sales, creative marketing programs, and technical support for its expanding reseller network. Call (800) 326-7427

VITAL SOFT INC.

CIRCLE 143

VISIMAGE, the end user report writer for the HP 3000 market. StarJet, the electronic forms solution for your HP LaserJet. VISIMAGE and StarJet can be sold independently.
Call (800) 7VITALSOFT for free demo.

WRQ (WALKER RICHER & QUINN)

CIRCLE 263

Makers of Reflection Series Software. HP terminal emulation for PCs and Macintoshes. Call (800) 872-2829.



*The publisher does not assume any liability for errors and omissions.

users to run the software on a proprietary, UNIX or client-server system.

This version was designed with the suite of fully portable business applications built on open systems standards including POSIX, UNIX and SQL. Operating systems are HP-UX, MPE/iX and Microsoft Windows, using the C and C++ programming languages.

A GUI provides standard features such as multitasking, pull-down menus, dialog boxes, a toll bar, drop-down lists, check boxes and a clipboard for copying and transferring information to other GUI applications.

System-wide decision support tools such as inquiry plus, report writer and budgeting can be used to analyze, forecast and manipulate data and integrate with spreadsheet, graphics, word processing and other executive decision support systems. Contact Mitchell Humphrey & Co., 11720 Borman Dr., Ste. 310, St. Louis, MO 63146-4192; (800) 237-0028.

Circle 382 on reader card

Orlicon Technology Inc. Offers PrintCommander

Orlicon Technology Inc. announced the release of PrintCommander remote spooled printing software for the HP 3000.

PrintCommander delivers spooled printer output to remote printers, faxes or telex machines. Remote printers can communicate with the system using any type of network connection. Outbound dialing to remote printers is supported when the products is used in conjunction with the Telamon Network Engine.

PrintCommander runs on all versions of MPE and MPE/iX.

Contact Orlicon Technology Inc., 269 Moore Park Ave., N. York, ON M2M 1N5; (416) 250-1688.

Circle 380 on reader card

Z-Code Ships Z-Mail 3.0

Z-Code Software Corp. shipped Z-Mail 3.0, the latest release of their Z-Mail Electronic Mail System. Z-Mail 3.0 features directory services access, MIME support, international support, remote mail capabilities, extensive configuration capabilities, hypertext online help and improved performance.

Z-Mail 3.0 offers new core functions, additions to the scripting language, enhancements to the user interface and fine tuning of performance that facilitates the handling of large volumes of mail.

Z-Mail 3.0 offers directory service access — a user interface to query a local or remote directory server for address information of users within the environment. This allows Z-Mail to be linked into directory service programs already in place, such as Network Information Services (NIS Or “Yellow Pages”), localized aliases or password files, proprietary databases and X.500 servers (white pages). If no directory exists, Z-Mail provides the capability to build one.

Contact Z-Code Software, 4340 Redwood Hwy., Ste. B-50, San Rafael, CA 94903; (415) 499-8649.

Circle 379 on reader card

MetaCard Imports HyperCard Stacks

MetaCard Corp. announced an upgrade to their hypermedia and Rapid Application Development environment. MetaCard is an easy-to-use alternative to conventional GUI development environments, hypertext document creation applications and presentation packages.

MetaCard 1.3 also can import and run stacks developed in the Apple/Claris

HyperCard version 1.2.5 and 2.1. HyperCard XCMDs are supported through a HyperCard compatible API, but must be recompiled for each target platform.

Other features include support for object-oriented (vector) graphics, new functions for spawning and managing external processes, playback of FLI/FLC format animation and support for import and display of EPS (PostScript) graphics. MetaCard 1.3 also features a user interface that supports multiple object selection with alignment and grouping.

MetaCard 1.3 will run on HP 9000 Series 300/700, SPARC (SunOS and Solaris 2.x), Sun 3, DECstation and DEC Alpha, SCO Open Desktop, 88open, Silicon Graphics IRIS, UnixWare, Linux and IBM RS/6000.

Single user copies of MetaCard cost \$495. Site licenses are available from \$1,800 for five users up to \$15,000 for 250 users.

Contact MetaCard Corp., 4710 Shoup Pl., Boulder, CO 80303; (303) 447-3936.

Circle 377 on reader card

HARDWARE

Kyocera Corp. Releases FINEDISK FRD-3151 MOD

Kyocera Corp. offered its 3 1/2-inch FINEDISK FRD-3151 MOD media. Kyocera FINEDISKS comply with all ISO standards, can operate on all manufacturers drives and at drive speeds of 1,800 to 3,600 rpm. FINEDISKS offer a preformatted 128 MB capacity protected from dust by an anti-static hardcoat.

Kyocera also offers the FINEDISK FRD-3351 with a P-ROM (Partial ROM) service where customer supplied software can be installed on the disk in a Read Only area. The remainder of the disk can be used for normal rewritable storage.

The FINEDISK FRD-3151 costs \$255 and is available in packages of five disks.

Contact Kyocera Corp., 5713 E. Fourth Plain Blvd., Vancouver, WA 98661; (206) 750-6107.

Circle 371 on reader card

ECCS Inc. Introduces Automated Network Backup

ECCS Inc. announced the Backup Module, a complete backup system which integrates industry-standard 8mm tape storage technology with reliable robotic cassette handling and a comprehensive data management system.

Highlights include: robotic access to 100 GB, providing automated access to ten 8mm cartridges, eliminating the need for operator



**HARBORSIDE
COMPUTER
MARKETING**

813-799-2009

We
Buy/Sell/Lease All
HEWLETT PACKARD!

AND

We service
1000/3000/9000
Memory/Workstations/
Printers/Plotters

**Harborside Marketing, Inc.
1010-A Park Court
Safety Harbor, FL 34695
813-799-2009
FAX 813-791-6699**

CIRCLE 267 ON READER CARD

intervention during backup; automatic, unattended backup; multiple-client support, which allows all users on the network to be backed up to a single Backup Module; multiple-drive support; complete media management; client-based restore; and a GUI that provides configuration capabilities for the systems administrator and the individual client.

The Backup Module supports Sun SPARC platforms and costs \$19,995.

Contact ECCS Inc., One Sheila Dr., Bldg. 6A, Tinton Fall, NJ 07724; (800) 322-7462.

Circle 375 on reader card

Xerox Provides HP Connection

The Xerox Corp. announced and launched The McLean Group Inc.'s L-25X decentralized printer protocol converter for HP 3000 and HP 9000 computers and Xerox 4235 and 4700 laser printers.

The L-25X supports HP-IB commands and structure, and connects directly to the IEEE 488 cable. The L-25X provides HP 256X printer emulation for the Xerox printer. Commands, status inquiries and error recovery procedures are executed to the Xerox printer. HP 3000/9000 console response emulates HP 256X responses. The L-25X converts PCL command strings to use third-party forms-creation and spooling software from Proactive Systems, Unison-Tymlabs and Holland House.

The Xerox 4235 is a monochrome duplex cut-sheet printer at 35 ppm, and the Xerox 4700 is a full-color simplex 30 ppm printer. Both printers provide users with multiple paper handling services in multiple printer languages. The Xerox 4700 supports PCL, Postscript and XDPM with color extensions. Contact The McLean Group, 1700 S. El Camino Real, San Mateo, CA 94402; (415) 299-1100.

Circle 398 on reader card

Analog Line-Card Tester Reduces Development Time

HP announced a POTS test-system option for its telecommunications board-test systems that helps manufacturers of analog-line-cards bring products to market faster. The new tester, HP 3079CT, reduces test-development time from four to six months, to a few days. In addition, it increases production-test throughput by enabling parallel testing of transmission and signalling functions.

The HP 3079CT is available as a systems. It also is available as an upgrade for HP 3070

board test systems. The HP 3079CT provides a full range of transmission, signalling and supervision tests to verify analog- and digital-line-card performance.

For POTS, the HP 3079CT uses an integrated VXI virtual instrument to provide analog-signal analysis. The HP 3079CT also provides testing solutions for ISDN line cards on the same platform.

Price starts at \$85,000 and can be added to any HP 3070 board test system.

Optiquest Introduces 4000DC 17-Inch Monitor

Optiquest Inc. introduced its 4000DC 17-inch, flat/square, color monitor. It features on-screen programming for control of monitor adjustments and a color matching system.

The 4000DC features an invar shadow mask which increases image crispness and brightness, compared to traditional CRTs. The unit's 17-inch flat/square display features ARAG (anti-reflection, anti-glare) coating designed to reduce distortion and eliminate dust static and attraction.

The 4000DC features an infinite palette of colors, .28 dot pitch and supports all common 15-pin display standards including: UVGA, IBM's 8514/A, SVGA, VGA, with a maximum non-interlaced resolution of 1280 x 1024. The unit also provides a 76 Hz refresh rate up to 1024 x 768. Price is \$999.

Contact Optiquest Inc., 20490 E. Business Pkwy., Walnut, CA 91789; (909) 468-3750.

Circle 393 on reader card



The Optiquest 4000DC allows for precise control of monitor adjustments.

HEWLETT-PACKARD

**BUY
SELL
RENT
REPAIR**

**9000 1000
3000 TEST**

**HP WORKSTATIONS
MEMORY - PLOTTERS
PRINTERS - DISC DRIVES
DATA ACQUISITION**

TSA

THE RIGHT EQUIPMENT. RIGHT NOW.

2040 West Sam Houston Parkway N.
Houston, Texas 77043

1-800-422-4872

713/935-1500

FAX 713/935-1555

CIRCLE 241 ON READER CARD

Datasys

COMPUTER CORPORATION
BUY • SELL • LEASE • TRADE

Hewlett-Packard

- SYSTEMS
- UPGRADES
- MEMORY
- PERIPHERALS

Call Today 800-DATASYS
(328-2797)

Dallas Oklahoma City
(214) 931-9195 (405) 947-0475
FAX (214) 931-9619 FAX (405) 947-3046

CIRCLE 484 ON READER CARD

TransferPro™

MACINTOSH™ and MS-DOS™
File Transfer Software for
HEWLETT-PACKARD® Workstations

- OSF/Motif graphical interface
- Point and click transfers
- Copy and move files & directories
- Format Mac and MS-DOS

Available on these popular platforms:

HP 9000, Sun SPARCstation,
SGI models, PC Windows

Supports Many Media: Bernoulli,
SyQuest, Magneto-Optical 3.5" Floppy,
Sony, Data Shuttle, SCSI Hard Drives

800-467-1459

Digital Instrumentation Tech., Inc.
127 Eastgate Drive #20500 fax 505/662-0897
Los Alamos, New Mexico, 87544 505/662-1459

CIRCLE 189 ON READER CARD



GREAT PRICES AND DISCOUNTS TO 30%

With Trilogic's trade up program, get significant discounts.
Buy any series 700/800
Get credit on Sun SPAC stations,
DEC stations, SGT workstations.

Call for Details
1-800-346-2933

Fax 412-745-5950

CIRCLE 223 ON READER CARD

HEWLETT-PACKARD

1000 • 3000 • 9000

BUY • SELL • RENT • LEASE
MAINTENANCE
PROCESSORS • PERIPHERALS • SYSTEMS

EURODATA INC.

(613) 745-0921

Fax: (613) 745-1172

2574 Sheffield Road, Ottawa, Canada K1B 3V7

CIRCLE 283 ON READER CARD

TSA IS THE PLACE FOR
HEWLETT-PACKARD

RENTALS

- 9000 700-400-300 Series
- 1000 A-E-F Series
- X Terminals
- DN Series
- Plotters
- 6-12 Mo. Lease/Purchase
- Laserjets
- Paintjets
- Disc Drives
- P.C.'s
- Data Acquisition
- Test Equipment

1-800-422-4872

713/935-1500 Fax 713/935-1555 Email: info@tsa.com

HEWLETT-PACKARD AUTHORIZED RENTAL COMPANY

THE RIGHT EQUIPMENT. RIGHT NOW.

2040 West Sam Houston Parkway N. • Houston, Texas 77043

HP RENTALS HP RENTALS

CIRCLE 228 ON READER CARD

BUY • SELL • TRADE

COMPLETE HP SYSTEMS AVAILABLE
ALL PERIPHERALS

All items in stock — immediate delivery
All warranted to qualify for manufacturer's maintenance.

ConAm Corporation

Canada/US 800-926-6264
California 310-419-2200
FAX 310-419-2275

CDLA

RENT • LEASE • MAINTENANCE

CIRCLE 210 ON READER CARD

AMTEK Since 1981

BUY ■ SELL ■ SERVICE ■ TRADE



RENT ■ LEASE

We accept MasterCard and Visa.

1-800-765-0331

Los Angeles ■ Washington, D.C. ■ Tampa

CIRCLE 206 ON READER CARD

TOUCH SCREEN SOLUTIONS FOR ALL HP SYSTEMS

- HP/APOLLO 9000/700-800
- HP 700RX
- HP ENVIZEX STATIONS

We provide touch-configured
HP monitors & X Stations

Trident Systems Inc.

Ph: (703) 691-7796
Fax (703) 273-6608



Channel Partner

CIRCLE 136 ON READER CARD

HP/Apollo
Products
& Services

Total Workstation Services

- HP/Apollo 9000/400-700
- Apollo DN Series
- Peripheral upgrades & repair
- Complete systems & upgrades
- Consulting services

TWS 508-250-0344

800-976-5566 MA
508-256-5543 FAX

35 Maple Road, Chelmsford, Massachusetts 01824-3713

CIRCLE 487 ON READER CARD

TUNE INTO HP

Pre-owned Equipment



WORKSTATIONS
CPUs
DISC & TAPE DRIVES
TERMINALS & PRINTERS
3000/9000 MEMORY

Lynne Company

(Phone #) 805-489-1564
(Fax) 805-481-3799

CIRCLE 219 ON READER CARD

ELECTRONIC SERVICES, INC.

230 Grant Road Suite B-24
East Wenatchee, WA 98802
FAX 509-662-8271

**BUY • SELL • RENT
LEASE • TRADE
HP 1000 • 3000 • 9000
AND TEST EQUIPMENT**

All quoted prices are FOB your dock
Call 509-662-9039

US Government,
Military, & Related Customers.

Call 509-662-6229

Since 1973

CIRCLE 212 ON READER CARD

The HyPoint Advantage . . .

INVENTORY

“Specializing in Full
Line of
HP 3000 Products”

Buy ■ Sell ■ Trade ■ Lease

HyPoint Technology
600 Ken Mar Drive
Cleveland, OH 44147

1-800-231-5500

216-526-0323

CIRCLE 217 ON READER CARD



Get the Hottest X Station on
the market today

HP's ENVIZEX

C2730A 15" 1024X768, COLOR
C2731A 17" 1024X768, COLOR
C2732A 19" MULTIMEDIA, COLOR

For more information & pricing
Contact: Dan Farrell

PHONE (800) 346-2933
FAX (412) 745-5950

CIRCLE 295 ON READER CARD



Buy - Sell - Lease - Trade
HEWLETT-PACKARD
Systems, Workstations
Peripherals, Solutions



(216) 835-2211

27378 W. Oviatt
Bay Village, OH 44140
FAX: (216) 835-0220

CIRCLE 272 ON READER CARD

Established 1978

HP Remarketing Specialists

1000 — 1000 — 1000

BUY

SELL

TRADE

Monterey Bay
COMMUNICATIONS

Phone: 408-429-6144

Fax: 408-429-1918

CIRCLE 229 ON READER CARD

NORCO COMPUTER SYSTEMS, INC.

Hewlett-Packard Quality
at a NorCo Price

1000 • 3000 • 9000 • 250

**BUY—SELL
TRADE—LEASE**
Processors, Peripherals
and Systems

21337 Drake Road
Cleveland, OH 44136-6620
FAX: 216-572-0636

216-572-4040 1-800-892-1920
(Outside Ohio)

CIRCLE 221 ON READER CARD

QUALITY HP EQUIPMENT WITHOUT THE HP PRICE

**DON'T UPGRADE YOUR HP SYSTEM
UNTIL YOU GET A SECOND OPINION
FROM THE SECOND SOURCE FOR
HEWLETT-PACKARD**

1000-3000-9000 EQUIPMENT

Consult with us about cost-saving alternatives

- Complete Configurations
- Individual CPUs-Peripherals
- Memory Upgrades and Feature Enhancements
- Classic and Spectrum Equipment

WE BUY
Highest Prices Paid

WE SELL
*All Items Sold Are Guaranteed for HP Maintenance
*Short and Long Term Leases Available

WE TRADE

Over 1000 satisfied Hewlett-Packard users are our
customer references throughout the
United States, Canada, Europe, and the Far East.



C.S.U. Industries Inc.
207 Rockaway Turnpike Lawrence, NY 11559
Ask for Mord: (516) 239-4310
FAX (516) 239-8374



CIRCLE 205 ON READER CARD

HP 3000

Buy — Sell — Trade
Hewlett Packard Equipment

CALL

713-690-1100

(Fax) 713-690-1130

Surety
Systems

8600 Jameel Road, Suite 120
Houston, TX 77040

CIRCLE 226 ON READER CARD



Channel Partner

Hardware, Outsourcing, Maintenance and Disaster Recovery Services.

Computer Solutions, Inc.
201-672-6000

CIRCLE 209 ON READER CARD

HEWLETT PACKARD

Depot Repair

- Expert Depot Repair
- 5 Day Turnaround
- Emergency Exchange Program



1-800-837-0061
216-365-9950 Ohio
216-365-3916 FAX

CIRCLE 158 ON READER CARD

HP Software

- Softbench
- Interface Architect - UIM/X
- VUE
- XRT/graph Widget

Now available on HP, Sun & more

BLUESTONE
The Open Systems Specialist



1200 Church St.
Mt. Laurel, NJ 08054
(609) 727-4600 fax (609) 778-8125

CIRCLE 252 ON READER CARD

HEWLETT-PACKARD 9000
IT'S OUR SPECIALTY.

PRINTERS	PLOTTERS
LaserJets	DraftPros
DeskJets	DraftMasters
Rugged Writers	Electrostatics DesignJet

WORKSTATIONS
Series 200, 300, 400, 700

We offer large discounts, outstanding service and immediate delivery. Call us before you buy a printer or plotter!



4117 2nd Avenue South
Birmingham, AL 35222
(205) 591-4747 or (800) 638-4833
Fax: (205) 591-1108

CIRCLE 233 ON READER CARD

HP-1000

BUY • SELL • TRADE • RENT

Hewlett-Packard Computer Equipment

Complete product line including, Systems, Memory, Discs, and Tapes.



HERSTAL
AUTOMATION LTD
3171 West Twelve Mile Road
Berkley, Michigan, USA 48072
Telex 650-321-1560
FAX 313-548-2010
Phone 313-548-2001

CIRCLE 216 ON READER CARD

SHERLOCK
Systems & Solutions

Sensible Solutions To The Mysteries Of Your Hardware Requirements

Solutions ... Not Just Answers

We inventory a large line of CPU'S and peripherals.
MPE • MPE-XL • UNIX
Buy • Sell • Trade • Lease



CALL
1-800-827-6804
FAX
216-848-4515

CIRCLE 491 ON READER CARD

CAREER opportunities

ENTRUST YOUR SOLID REPUTATION TO OURS.

WTW, a leader in systems integration and information consulting to many Fortune 500 companies is seeking highly-qualified professionals to work with us in solving business problems through technical solutions.

Apply your experience in:

■ HP3000 COBOL	■ Powerhouse
■ X-Windows/MOTIF	■ Speedware
■ HP9000 HP-LX	■ ASK MANMAN
■ Telephony/CTI	■ ORACLE/SYBASE
■ ChemLMS LAB/UX	■ PowerBuilder

Send resumes to:

WTW
INFORMATION TECHNOLOGY CONSULTING

WESSON, TAYLOR, WELLS AND ASSOCIATES, INC.
P.O. Box 12278-HPPO
Research Triangle Park, NC 27709-2278
(919) 941-0081 or (800) 833-2894
Fax (919) 941-0082 • CSERVE 73821, 3536
An Equal Opportunity Employer

CIRCLE 201 ON READER CARD

THE HP PLACEMENT SPECIALISTS

INFOTECH
SEARCH GROUP, LTD.

◆ EXPERIENCED PROFESSIONALS WITH A PROVEN TRACK RECORD OF SUCCESS IN PLACING HP TALENT

NED POOLE
BRIAN DONOHUE
919-538-0123
FAX# 919-538-0126
PO BOX 2195, BURLINGTON NC 27216-2195

"PROFESSIONALS SERVING PROFESSIONALS"

CIRCLE 218 ON READER CARD

HP CAREERS NATIONWIDE

EMPLOYMENT MARKET IS STRONG!!!

Many opportunities for those with the following skills:

- MPE or UNIX Systems Management
- POWERBUILDER, UNIFACE
- SYBASE / ORACLE / INFORMIX
- ASK, AMAPS, BGSS, MOMS
- Networking - LAN, WAN
- C, C++, Progress
- COBOL, SPEEDWARE, POWERHOUSE

Call - **Amos & Associates**



Diane Amos, C.P.C.
633-B Chapel Hill Road
Burlington, N.C. 27215
(910) 222-6231
FAX: (910) 222-1214

CIRCLE 204 ON READER CARD

Bradmark Technologies, Inc., developers of data management software products, is searching for experienced and motivated individuals to join our Research and Development department in Houston, Texas. Candidates must have technical development experience on the HP 3000, HP 9000, or Windows 3.1 platforms. Additionally, language experience must include SPL, SPLash!, C, C++ based on the specific platform, along with Client-Server applications between the platforms using RPC/DCE technologies.

Send resumes to Bradmark Technologies, Inc., 4265 San Felipe, Suite 800, Houston, Texas 77027, Attn: Director of Research and Development.

No phone calls will be accepted.

CIRCLE 468 ON READER CARD

INFORMATION

Rates:

Size: 1/9 page 2³/₁₆" x 2³/₄"

**COLOR
NOW AVAILABLE
\$100**

- 1 time: \$550.**
- 3 times: \$495.**
- 6 times: \$440.**
- 12 times: \$385.**

- Typesetting and composition available.
- Camera ready mechanical required.

For more information call:

**Lisa Merck
(708) 655-0100**

**Reader Service
Number**

Page

3Com - Synergetics	INSERT
242 Artecon	I.F. COVER
171 Black River Computers	53
425 CBM Books	53
274 CenterLine Software	31
454 CMI	60
167 Computer Solutions, Inc	55
232 Concorde Technologies, Inc.	43
495 Enterprise Expo	49
190 FutureSoft	45
464 GE Rental Lease	4
267 Harborside Marketing, Inc	66
173 Herstal Automation, Ltd.	41
119 Herstal Automation, Ltd.	19
Hewlett Packard/CSG	5
286 Holland House	50-51
122 IEM, Inc.	2
247 Information Builders, Inc.	29
146 Infotek	33
458 Insignia Solutions, Inc.	25
281 Kingston Technology Corp.	1
463 Lawson Software	11
155 M.B. Foster Associates	57
472 MiniSoft, Inc.	64
154 Mitchell Humphrey & Co.	37
246 Newport Digital Corporation	9
187 Norand Corp.	21
258 O'Pitt Systems	I.B. COVER
268 Quest Software	17
175 Quest Software	39
471 R Squared	61
131 S.A.R. Incorporated	55
165 Sungard	15
245 Texas ISA, Inc.	59
477 Tryonics, Inc.	13
241 Technical & Scientific Applications (TSA)	67
499 Unison/Tymblabs	6
270 Vision Source	12
143 Vital Soft Incorporated	27
262 Walker Richer & Quinn, Inc.	23
263 Walker Richer & Quinn, Inc.	O.B. COVER

Outsource Of Controversy

Overseas Programming Is Here To Stay. What Are You Going To Do?



By Gordon
McLachlan

If you don't have extra skills and capabilities to make up for the difference in cost, your job could easily move out of the country.

One of the latest trends in MIS outsourcing is the use of foreign body shops to provide programmers. When I worked for one major corporation — over 10 years ago, they would often import Indian programmers through foreign body shops when they needed extra stateside manpower for one job or another.

These people were well-educated, highly-skilled and well versed in the English language. The bottom line was they could get the job done as well as your average American programmer, and more importantly, they were a bargain. To some of us, however, it looked like exploitation.

Despite the appearance of exploitation, it was viewed as an opportunity for these men to make more money than they could have back home. And, an even better opportunity if they wanted to immigrate here and eventually get U.S. citizenship.

The government did eventually catch on to abuses of the visa system, and has tightened up its policies over the last few

years. Now, U.S. companies supposedly have to pay the “prevailing wage” for foreign nationals they hire to work in the United States. But what is the prevailing wage? On the one hand, an entry-level programmer could be paid \$8 per hour to work at the local university, but on the other hand, an experienced professional could pull down \$40 per hour.

However, it seems that a few large companies are now even finding ways around that stumbling block by outsourcing projects to foreign companies that do all the work off-shore. Thanks to the wonders of modern telecommunications, it's now possible to move entire projects to India, Ireland or any other place where you can find cheap labor or government subsidies.

Are U.S. programmers seriously at risk? You bet. Our companies need computers, but they're getting increasingly touchy about how expensive it is to

develop code for those machines. And, things aren't getting any cheaper. If you don't have extra skills and capabilities to make up for the difference in cost, your job could move out of the country as easily as some unlucky factory worker.

Ed Yourdon — the man behind the eponymous development methodologies he pushes — recently wrote in *Computerworld* that the American computer programmer was overpaid and underskilled, and should either develop world class skills in “computer aided software engineering, systems development methodologies, software process maturity, metrics, reuse, software quality techniques and software engineering ... business process re-engineering, system dynamics modeling and software risk management” or be prepared to take it like a man.

What Ed's saying is that if you want a job in the 21st century, you need to develop a repertoire that will elevate you to a Jack-of-all-languages, because the time has past when you are considered to be worth 50 grand to blow out COBOL code.

Ironically, it may be the failure of formal methodologies that saves us. It's a pain to develop code long-distance. A critical part of any development project is the face-to-face time programmers have with their customers and each other. To write code off-shore, you have to be pretty rigorous in your specifications and use formal assignment hand-offs to keep everything under control. I can't see long-distance development being any more satisfying than a long-distance love affair.

John Dvorak opined in his *PC Magazine* column that “While this dream of cheap foreign code may eventually work for large, bloated systems, the best code is still done by small teams of young American coders eating pizza and drinking Coca Cola. And I've yet to see any decent code come out of India.” Well, the bad news, John, is that Coca Cola just re-opened its franchise in India after a 20-some year hiatus. Thank God there is still no decent pizza delivery.

McLachlan's internet address:
mclachlan@cardinal.com

A New Milestone In Electronic Reporting.

REVEAL/CS: For HP-UX and MPE/iX Systems.



O'PIN Systems introduces REVEAL/CS,[™] the cutting edge solution in electronic reporting for HP-UX and MPE/iX systems. Using client/server technology,

REVEAL/CS delivers maximum flexibility to Information Technology Managers in multi-platform environments.

REVEAL/CS gives all your users instant on-line access to reports right from their desk. Using a PC, Macintosh[®] or terminal, they can locate and display needed information. They can query against report data with "Find All," build summary files, even drill up or down.



Users can selectively print exact information to LAN, attached or spool printers. Because REVEAL/CS is POSIX compliant, you gain an enterprise-wide common interface that can access multiple platforms.

Information Technology Managers can even migrate to different platforms and easily implement technological advances into REVEAL/CS.

If you're ready to step into the future—today, call O'PIN Systems for a FREE DEMONSTRATION of new REVEAL/CS.

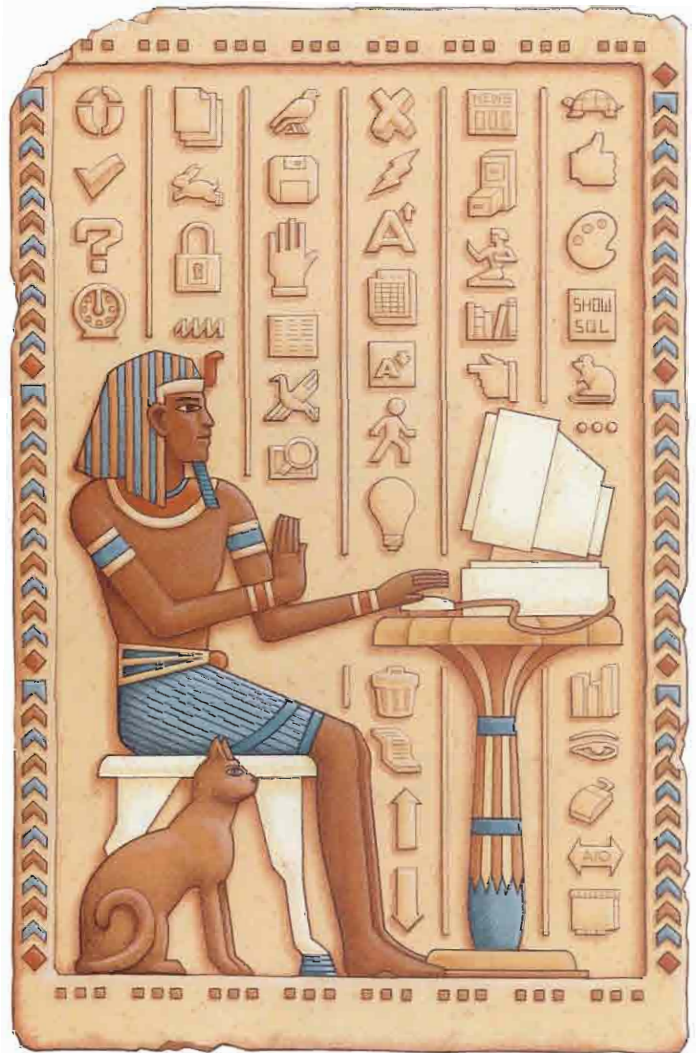


1-800-888-1804



International Plaza, Suite 635

7900 International Drive, Bloomington, MN 55425-1510 USA
PHONE 612-854-3360 FAX 612-854-3072



- Yes! Call me to arrange a FREE DEMO.
 Send me more information on REVEAL/cs.

Name _____

Title _____

Company _____

Address _____

City _____ State _____ Zip _____

Phone (____) _____ Fax (____) _____

REVEAL/CS is a registered trademark of O'PIN Systems, Inc. All other trademarks are the property of their respective owners.



PC connectivity?



Reflection makes it child's play.

If connecting PCs to minicomputers, mainframes, and servers has you puzzled, choose Reflection® and Reflection Network Series® software from WRQ.

No other software vendor offers such a complete solution to integrate personal computers with HP 3000, HP 9000, VAX/VMS, UNIX, and IBM systems. Reflection provides the most precise terminal emulation for text and graphics, fast file transfer, a versatile command language, and more—for DOS, Windows, and Macintosh platforms. Reflection also offers a reliable PC X server. All

backed by a solid company with exceptional technical support.

If you want to run host and server applications at the same time, add the Reflection Network Series. Run NS/VT, LAT, Telnet, and TCP/IP concurrently with LAN protocols from a single PC, over Ethernet or Token-Ring networks. The Reflection Network Series also includes support for Berkeley Sockets, NetBIOS, and NetPC—yet it takes remarkably little memory.

Putting all the pieces together can be challenging. So avoid the mind games. True genius is simplicity.

Whether you need basic PC-to-host connections, links to multiple hosts and LANs, or you're moving to the world of X, there's one obvious solution: Reflection.

To solve your connectivity problems call

800-92NETWORK
In Europe, call +31.70.375.11.010
Outside Europe, call 206.2.177.100

CIRCLE 263 ON READER CARD

WRQ Reflection
Making PC Connections Count